

Gesamtauswertung Probe 1

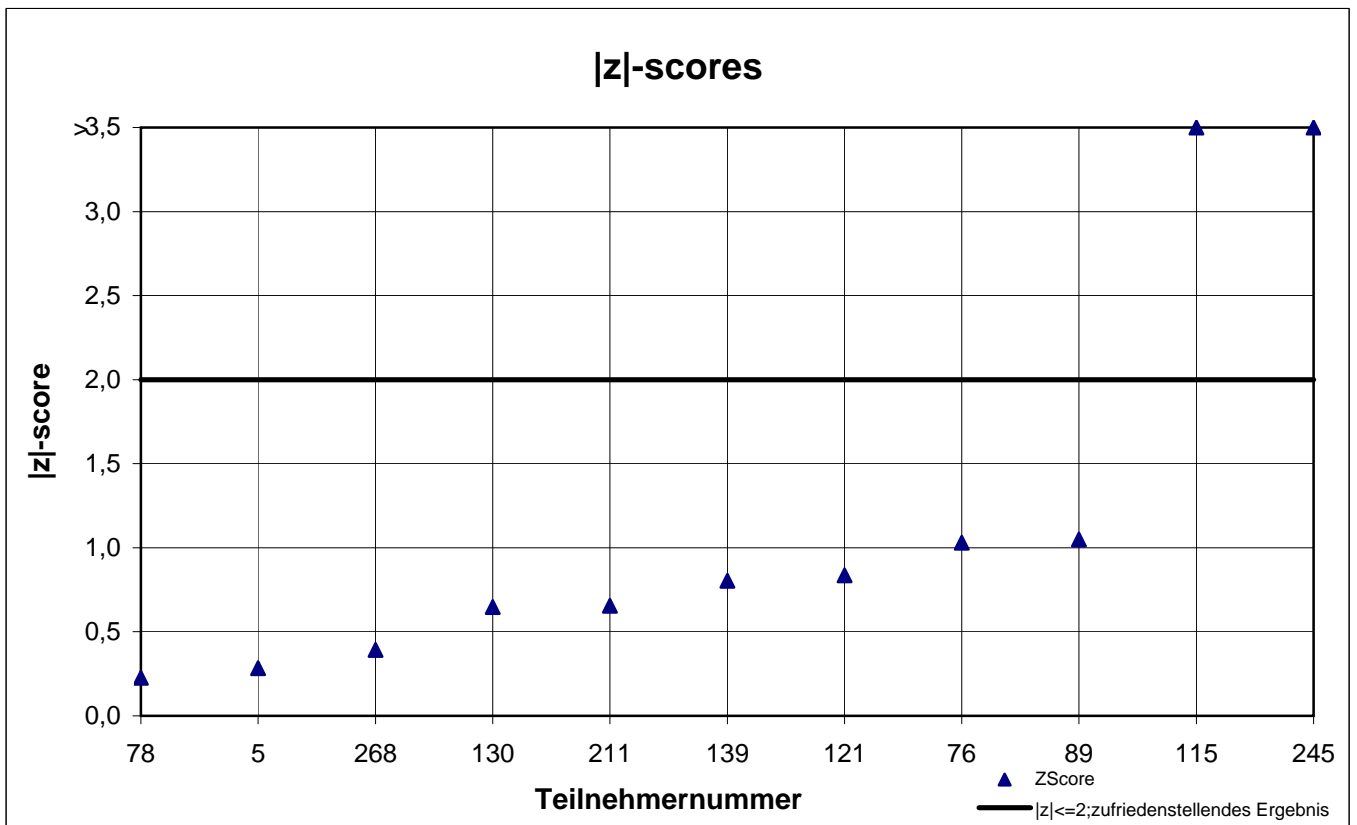
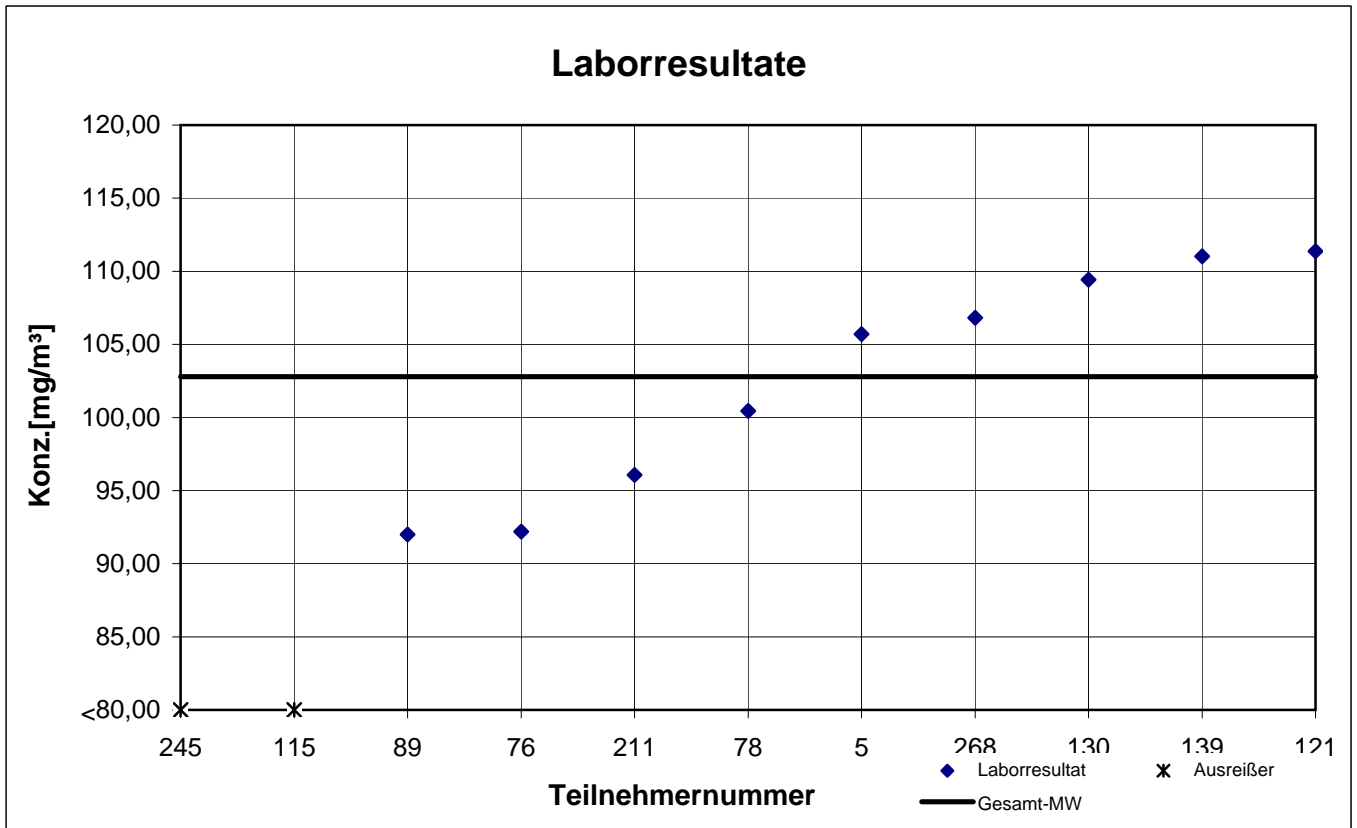
| Teilnehmer- nummer | 2,6-Dimethyl-4- heptanon | | 4-Methyl-2-pentanon | | Cyclohexanon | | Cyclopentanon | |
|-----------------------|--|------------|--|------------|--|------------|--|------------|
| | Labor- resultat [mg/m ³] | z - score | Labor- resultat [mg/m ³] | z - score | Labor- resultat [mg/m ³] | z - score | Labor- resultat [mg/m ³] | z - score |
| 5 | 105,7 | 0,3 | 74,26 | 0,4 | 39,24 | 0,2 | 99,27 | 1,1 |
| 40 | k.A. | k.A. | 68,10 | 0,5 | 35,77 | 0,7 | 114,5 | 0,2 |
| 76 | 92,20 | 1,0 | 68,60 | 0,4 | 39,43 | 0,2 | 116,6 | 0,4 |
| 78 | 100,4 | 0,2 | 70,50 | 0,2 | 43,12 | 1,2 | 115,4 | 0,3 |
| 89 | 92,00 | 1,0 | 61,03 | 1,5 | 32,83 | 1,5 | 98,30 | 1,2 |
| 115 | 38,79 | 6,2 | 32,37 | 5,5 | 20,98 | 4,6 | 56,42 | 5,0 |
| 121 | 111,4 | 0,8 | 77,80 | 0,8 | 41,57 | 0,8 | 124,5 | 1,1 |
| 130 | 109,4 | 0,6 | 75,40 | 0,5 | 52,70 | 3,7 | 124,4 | 1,1 |
| 139 | 111,0 | 0,8 | 74,57 | 0,4 | 38,07 | 0,1 | 118,8 | 0,6 |
| 211 | 96,06 | 0,7 | 73,88 | 0,3 | 40,61 | 0,5 | 115,0 | 0,3 |
| 245 | 3,70 | 9,6 | 0,58 | 9,9 | 0,57 | 9,9 | 0,88 | 9,9 |
| 268 | 106,8 | 0,4 | 73,16 | 0,2 | 36,07 | 0,6 | 92,82 | 1,7 |

Die mit gekennzeichneten Felder sind Ausreißer!

| | 2,6-Dimethyl- 4-heptanon | 4-Methyl-2- pentanon | Cyclo- hexanon | Cyclo- pentanon |
|---|-----------------------------|-------------------------|-------------------|--------------------|
| Gesamtmittelwert c_k [mg/m ³] | 102,8 | 71,73 | 38,52 | 112,0 |
| Standardabweichung S_k [mg/m ³] | 7,823 | 4,834 | 3,208 | 11,161 |
| rel. Standardabweichung [%] | 7,61 | 6,74 | 8,33 | 9,97 |
| Sollwert (Belegungskonzentration) [mg/m ³] | | 70,00 | 41,30 | 115,5 |

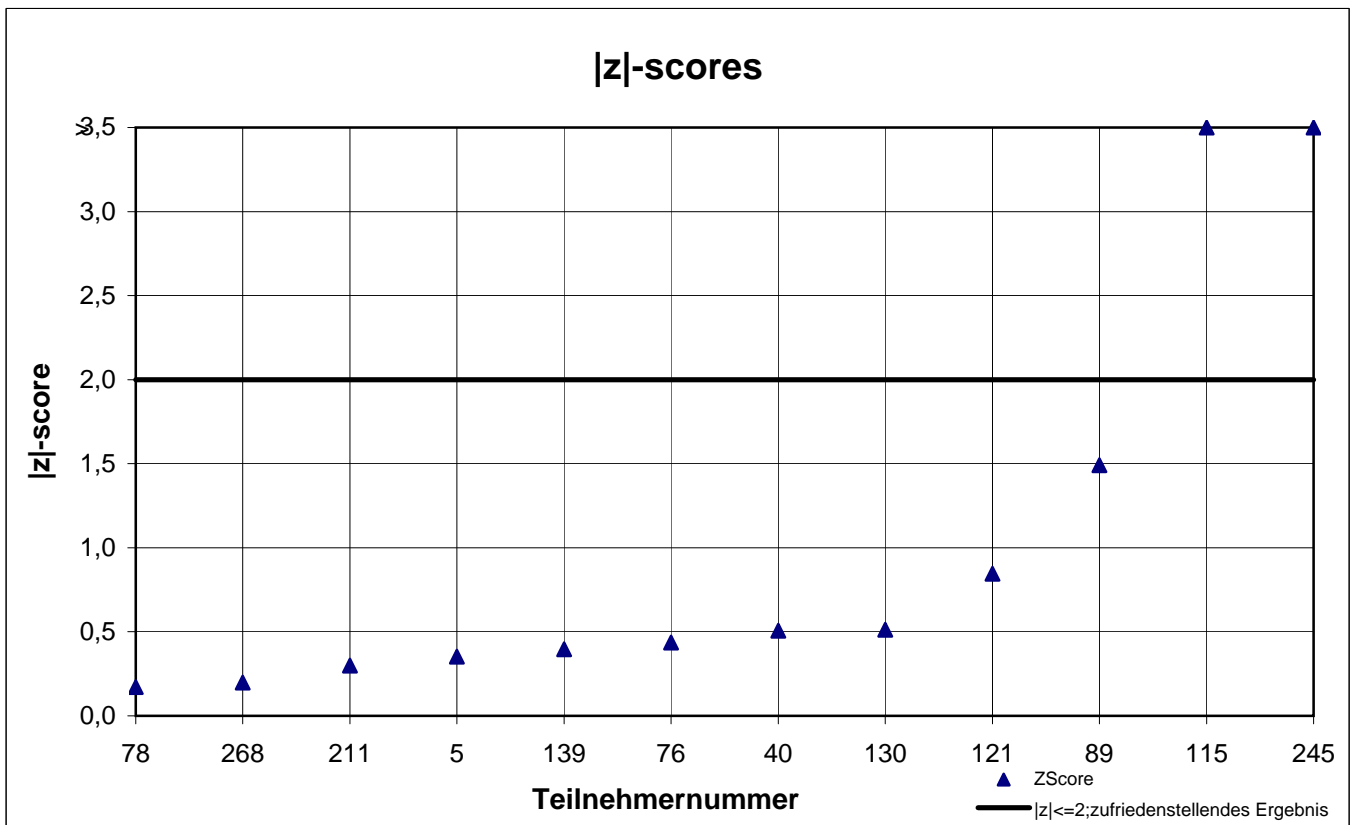
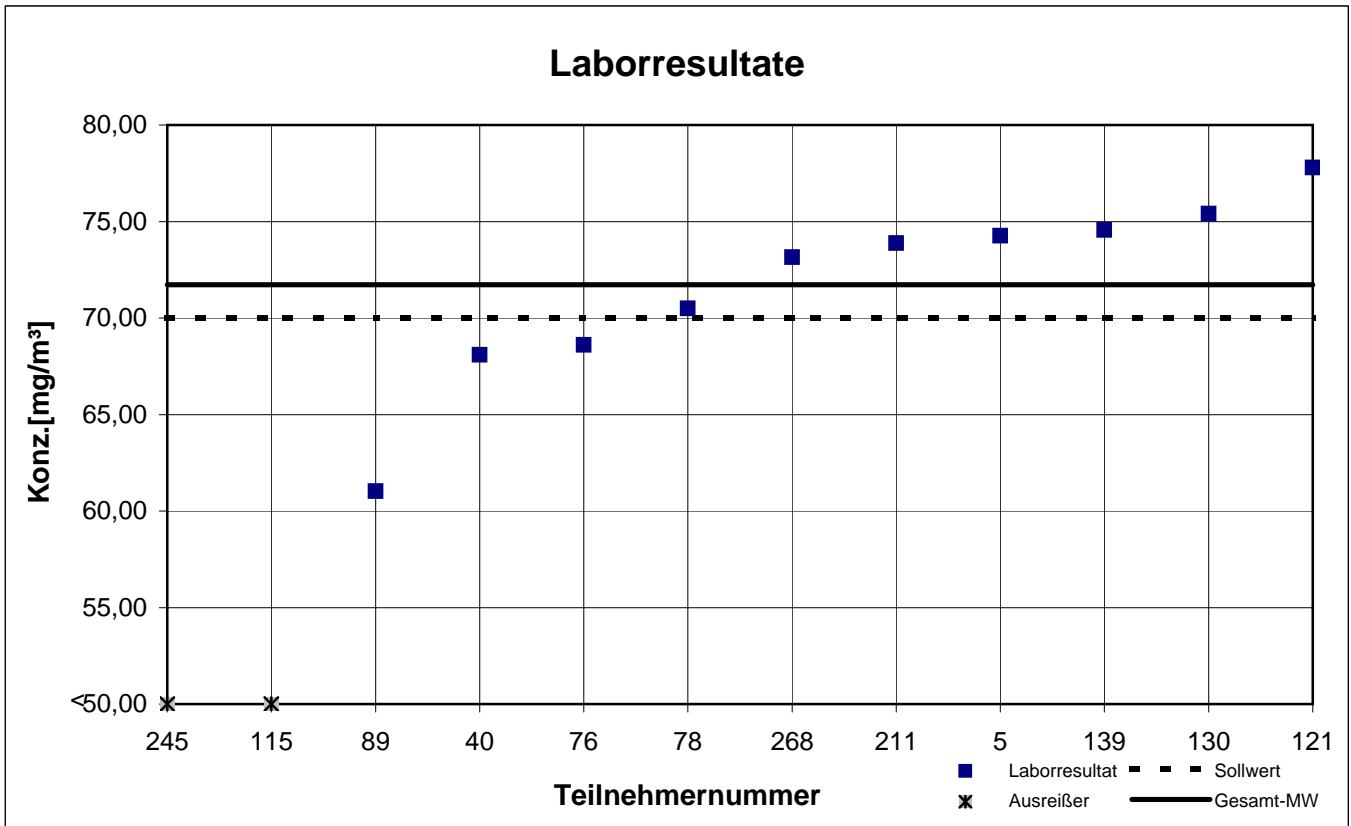
Probe 1

2,6-Dimethyl-4-heptanon



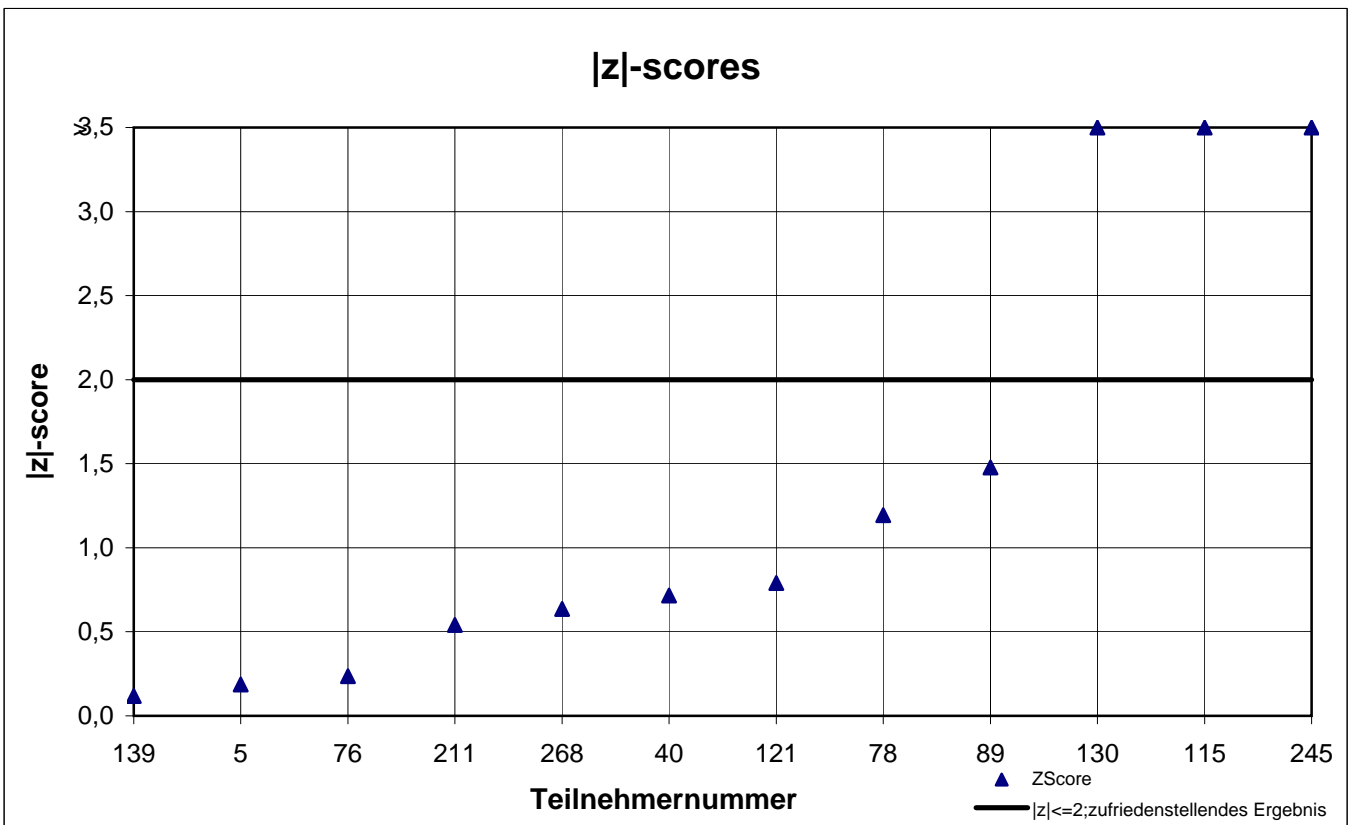
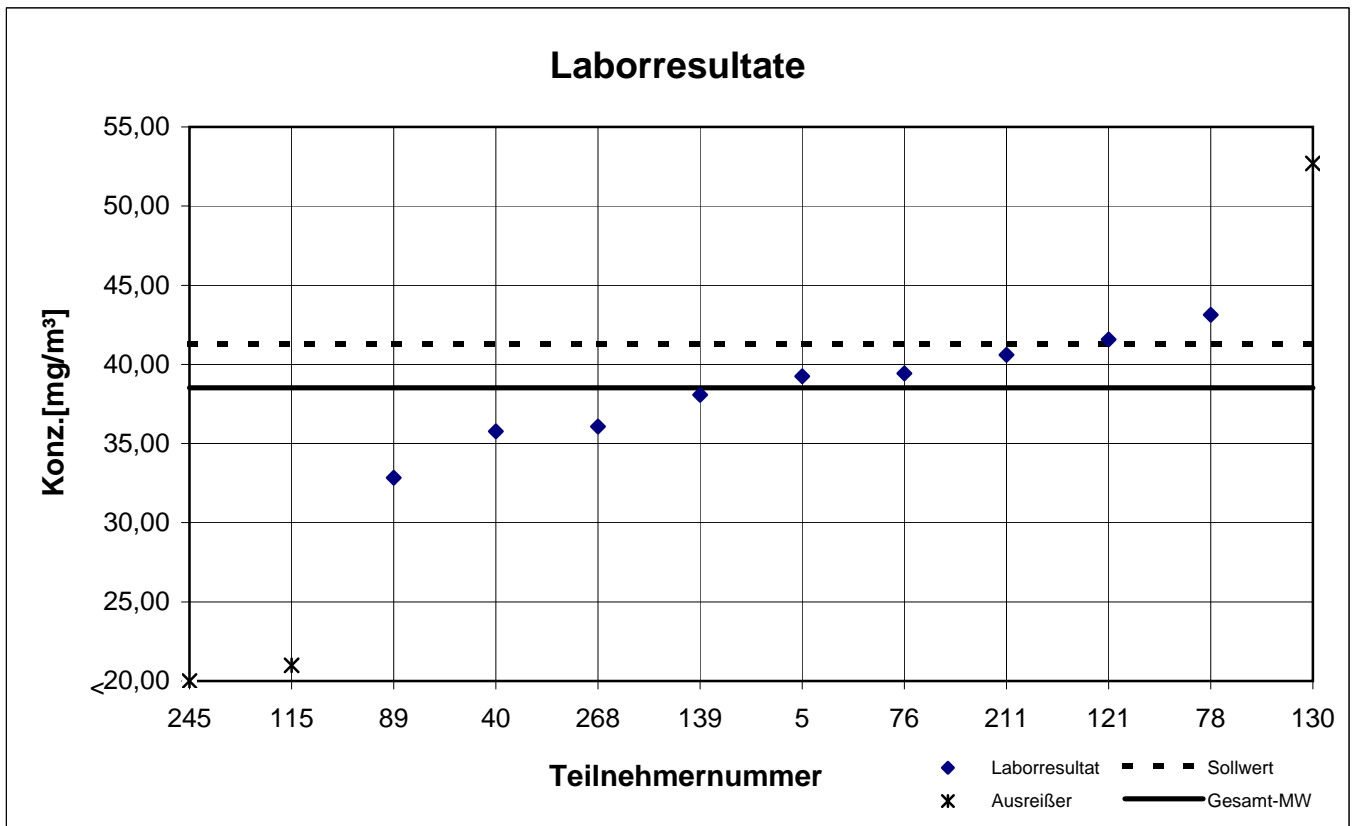
Probe 1

4-Methyl-2-pentanon



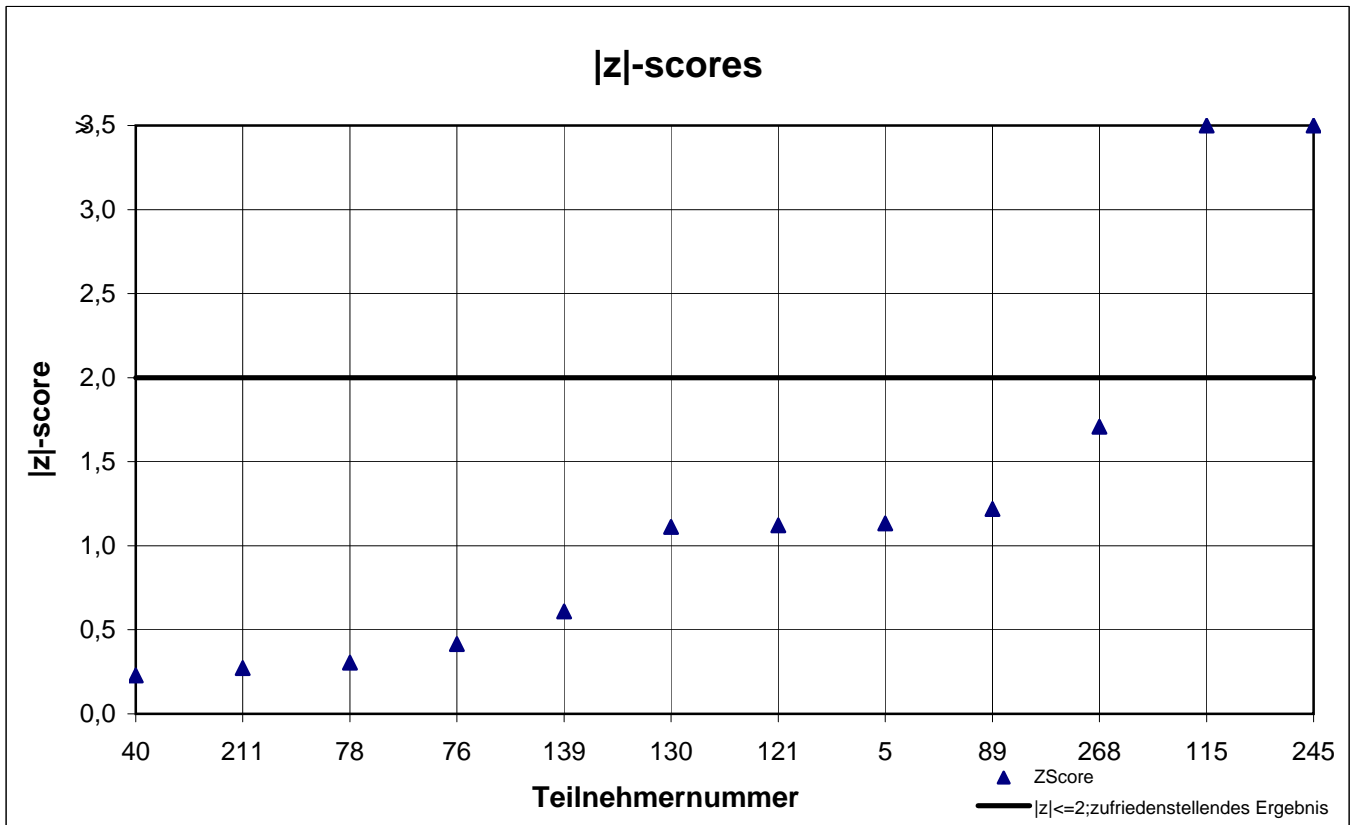
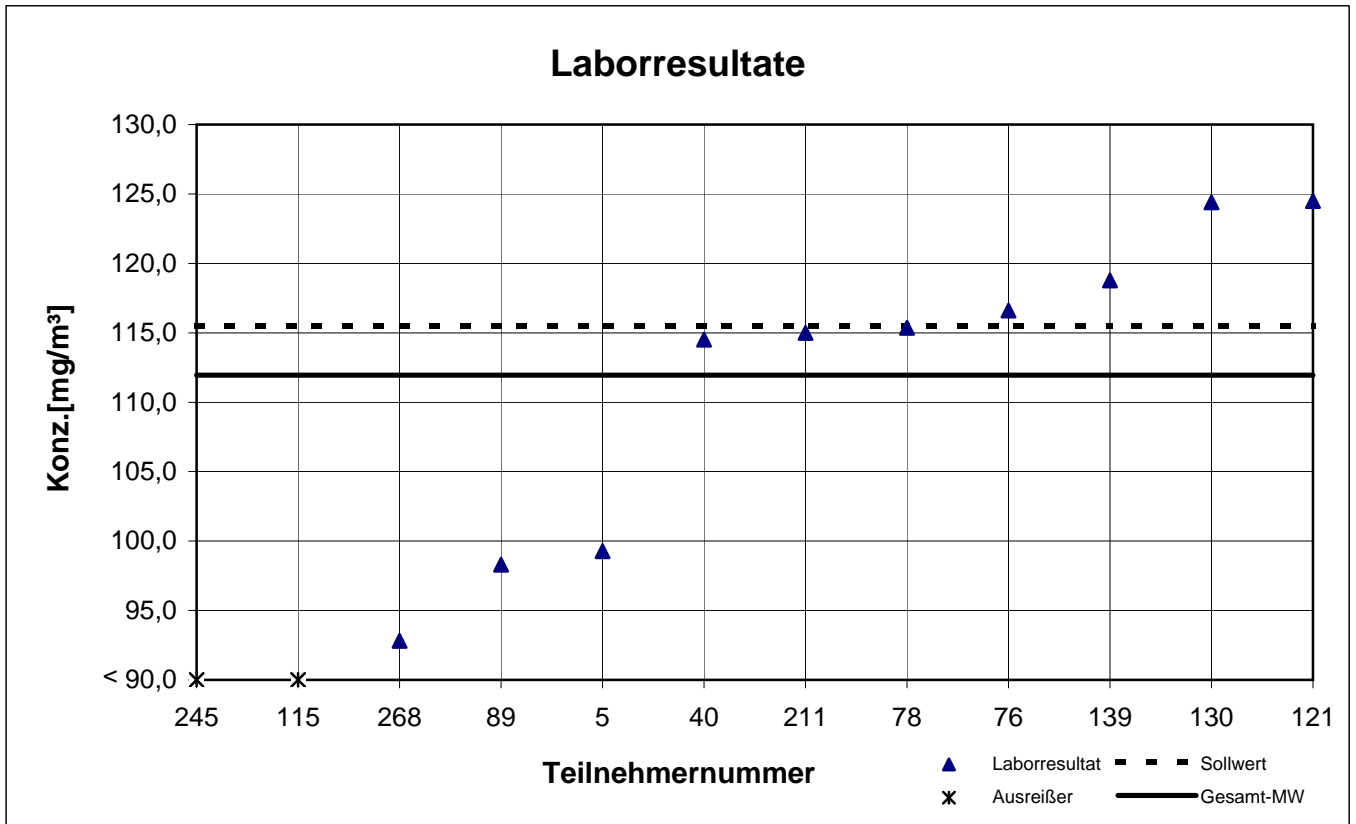
Probe 1

Cyclohexanon



Probe 1

Cyclopentanon



Gesamtauswertung Probe 2

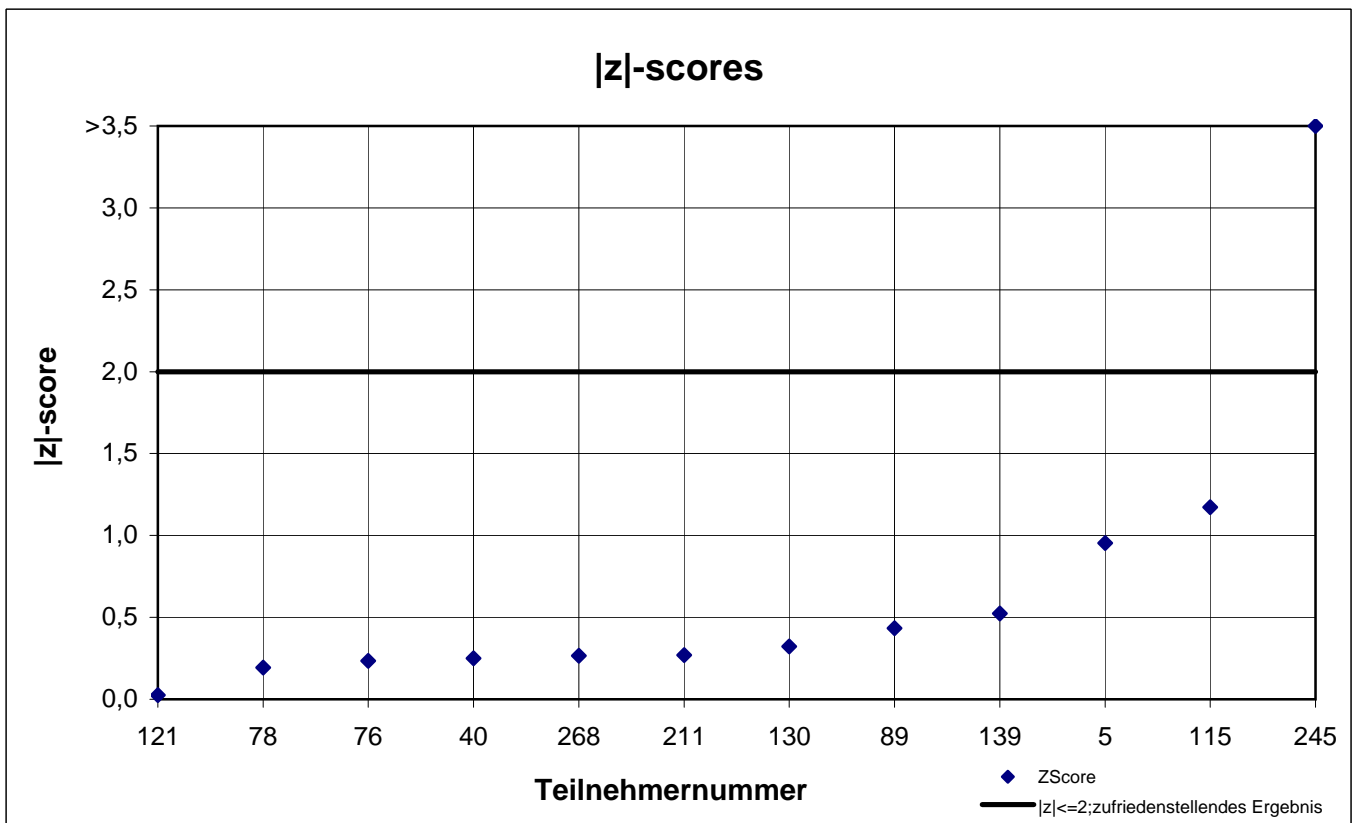
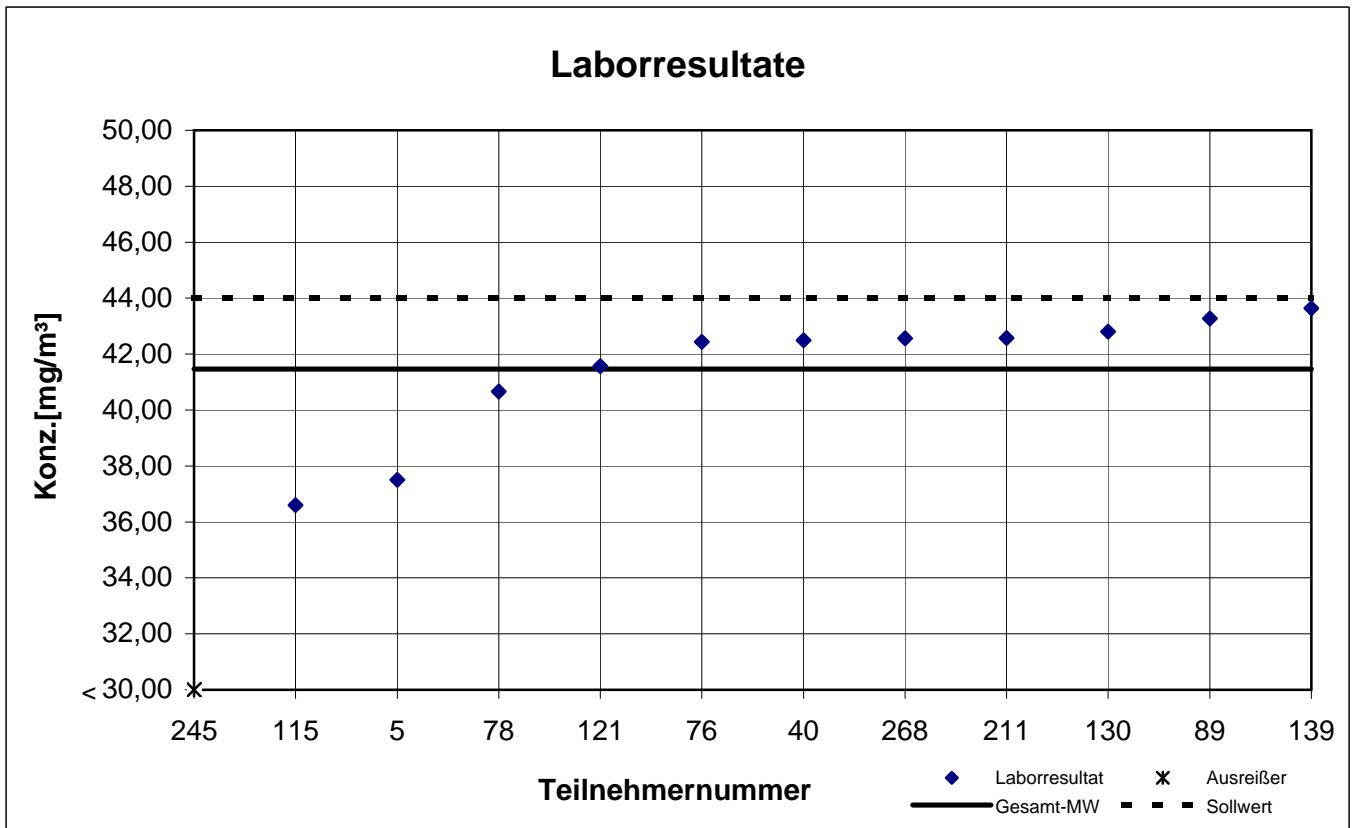
| Teilnehmer- nummer | 1-Butanol | | Ethylbenzol | | n-Butylacetat | | n-Heptan | | p-Xylol | | Toluol | |
|-----------------------|--|------------|--|------------|--|------------|--|---------------|--|------------|--|---------------|
| | Labor- resultat [mg/m ³] | z - score | Labor- resultat [mg/m ³] | z - score | Labor- resultat [mg/m ³] | z - score | Labor- resultat [mg/m ³] | z - score | Labor- resultat [mg/m ³] | z - score | Labor- resultat [mg/m ³] | z - score |
| 5 | 37,51 | 1,0 | 78,52 | 0,6 | 87,66 | 0,1 | 91,35 | 0,8 | 110,3 | 1,1 | 52,45 | 0,8 |
| 40 | 42,50 | 0,2 | 76,57 | 0,3 | 86,70 | 0,0 | 84,63 | 0,0 | 103,3 | 0,4 | 48,47 | 0,0 |
| 76 | 42,43 | 0,2 | 79,63 | 0,8 | 90,97 | 0,5 | 92,73 | 1,0 | 110,9 | 1,1 | 52,30 | 0,7 |
| 78 | 40,66 | 0,2 | 74,14 | 0,0 | 83,44 | 0,4 | 83,17 | 0,1 | 101,5 | 0,2 | 48,57 | 0,0 |
| 89 | 43,27 | 0,4 | 67,50 | 0,9 | 77,77 | 1,0 | 71,60 | 1,5 | 87,80 | 1,2 | 41,53 | 1,5 |
| 115 | 36,60 | 1,2 | 58,28 | 2,1 | 65,10 | 2,5 | 74,26 | 1,2 | 82,60 | 1,7 | 42,45 | 1,3 |
| 121 | 41,57 | 0,0 | 78,63 | 0,6 | 87,60 | 0,1 | 90,77 | 0,8 | 109,7 | 1,0 | 51,47 | 0,6 |
| 130 | 42,80 | 0,3 | 77,83 | 0,5 | 85,97 | 0,1 | 84,67 | 0,0 | 105,2 | 0,6 | 50,70 | 0,4 |
| 139 | 43,63 | 0,5 | 81,80 | 1,1 | 82,53 | 0,5 | 90,07 | 0,7 | 106,5 | 0,7 | 53,57 | 1,0 |
| 211 | 42,58 | 0,3 | 72,97 | 0,1 | 83,64 | 0,3 | 87,67 | 0,4 | 97,05 | 0,3 | 49,13 | 0,1 |
| 245 | 13,80 | 6,7 | 61,70 | 1,7 | 96,50 | 1,1 | 72,70 | 1,4 | 70,70 | 2,9 | 41,30 | 1,5 |
| 268 | 42,57 | 0,3 | 80,43 | 0,9 | 89,90 | 0,4 | 89,35 | 0,6 | 110,3 | 1,1 | 52,18 | 0,7 |

Die mit gekennzeichneten Felder sind Ausreißer!

| | 1-Butanol | Ethyl- benzol | n-Butyl- acetat | n-Heptan | p-Xylol | Toluol |
|---|-----------|------------------|--------------------|----------|---------|--------|
| Gesamtmittelwert c_k [mg/m ³] | 41,46 | 74,00 | 84,81 | 84,41 | 99,64 | 48,68 |
| Standardabweichung S_k [mg/m ³] | 2,327 | 7,620 | 7,792 | 7,572 | 12,875 | 4,470 |
| rel. Standardabweichung [%] | 5,61 | 10,30 | 9,19 | 8,97 | 12,92 | 9,18 |
| Sollwert (Belegungskonzentration) [mg/m ³] | 44,00 | 80,20 | 88,10 | 90,8 | 109,50 | 50,90 |

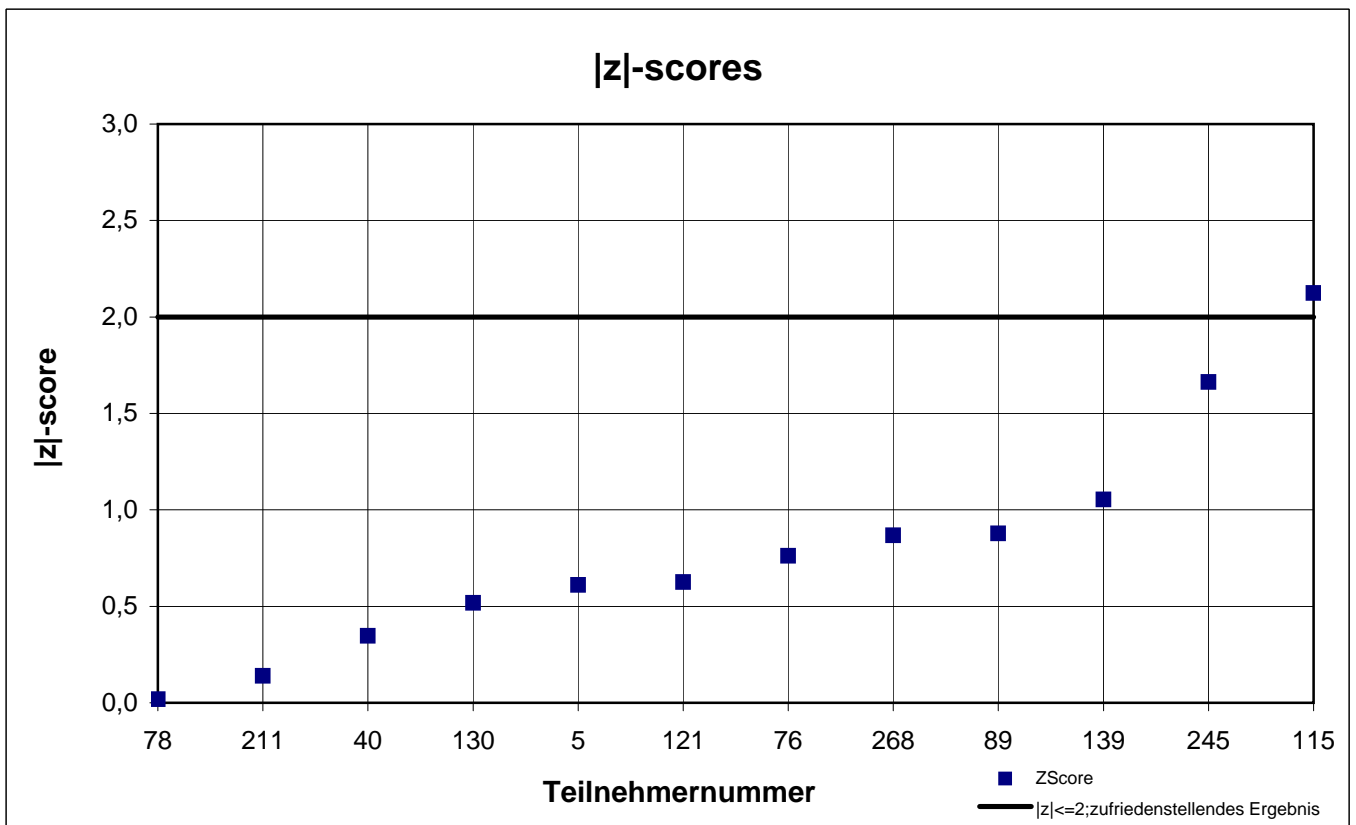
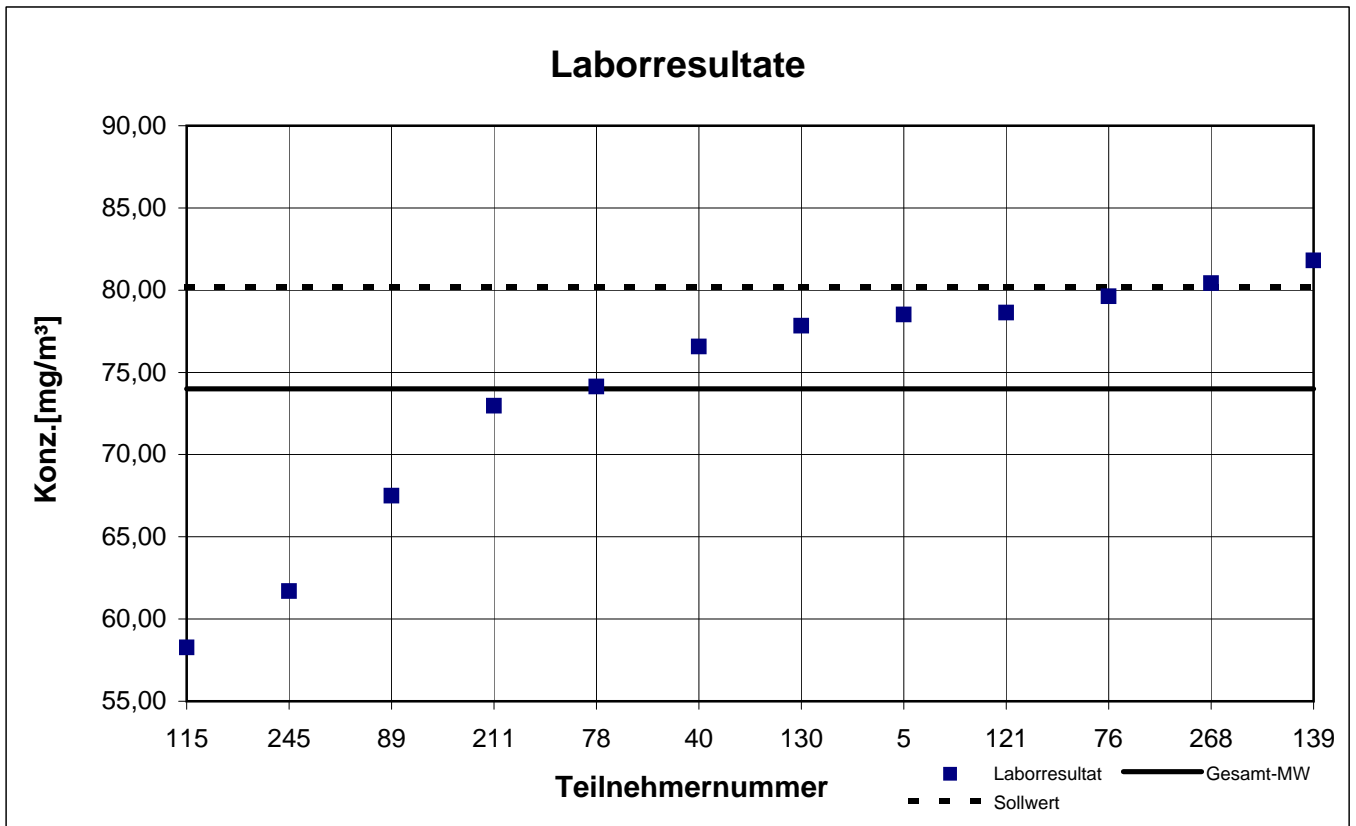
Probe 2

1-Butanol



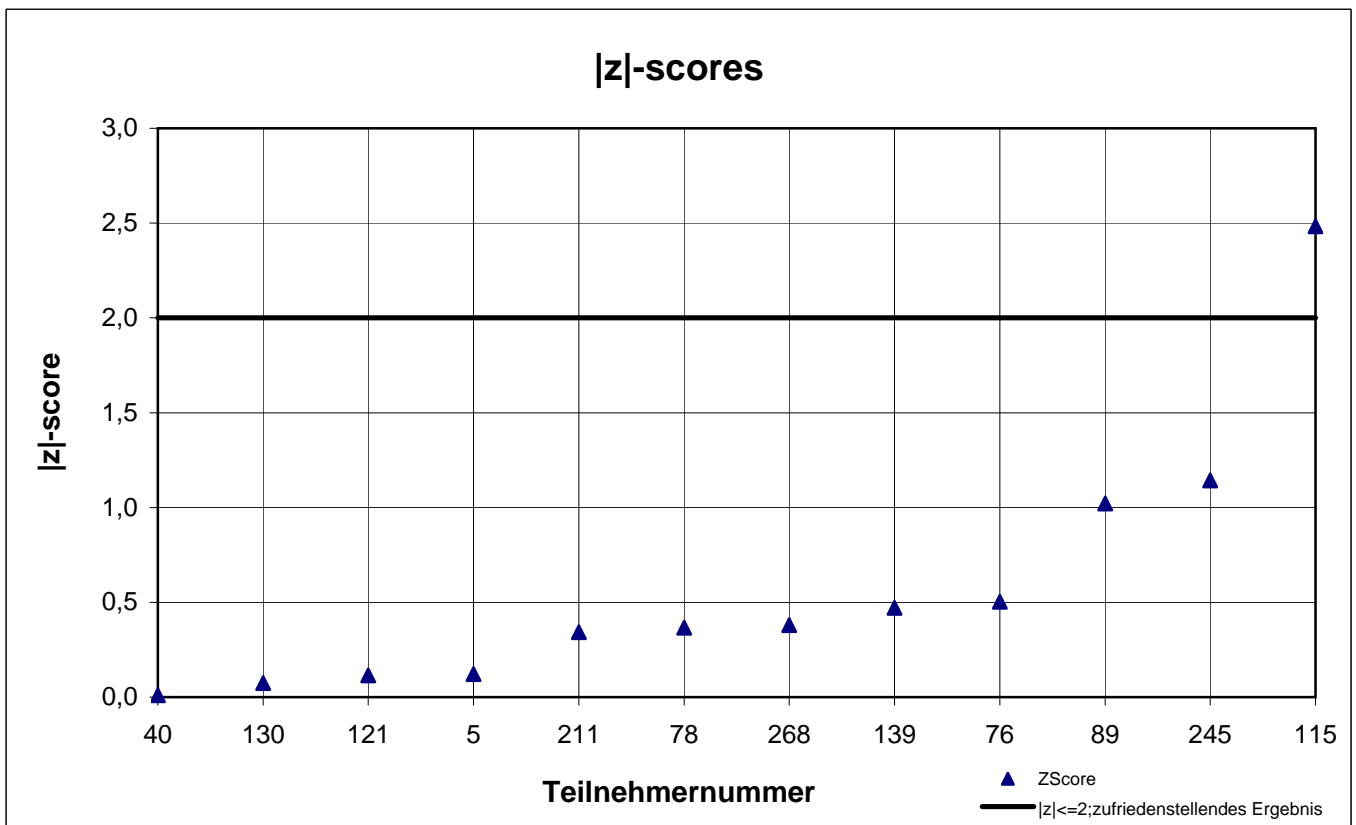
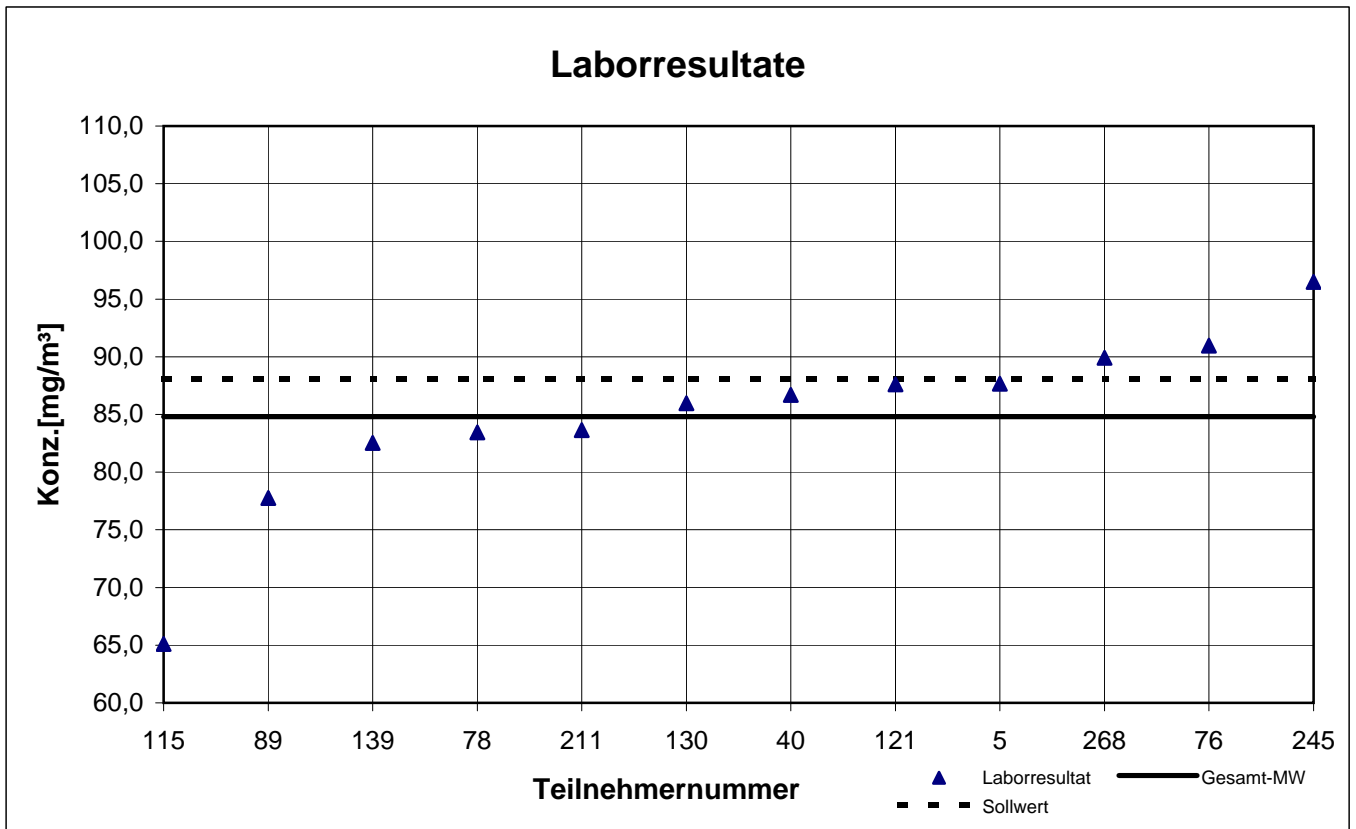
Probe 2

Ethylbenzol



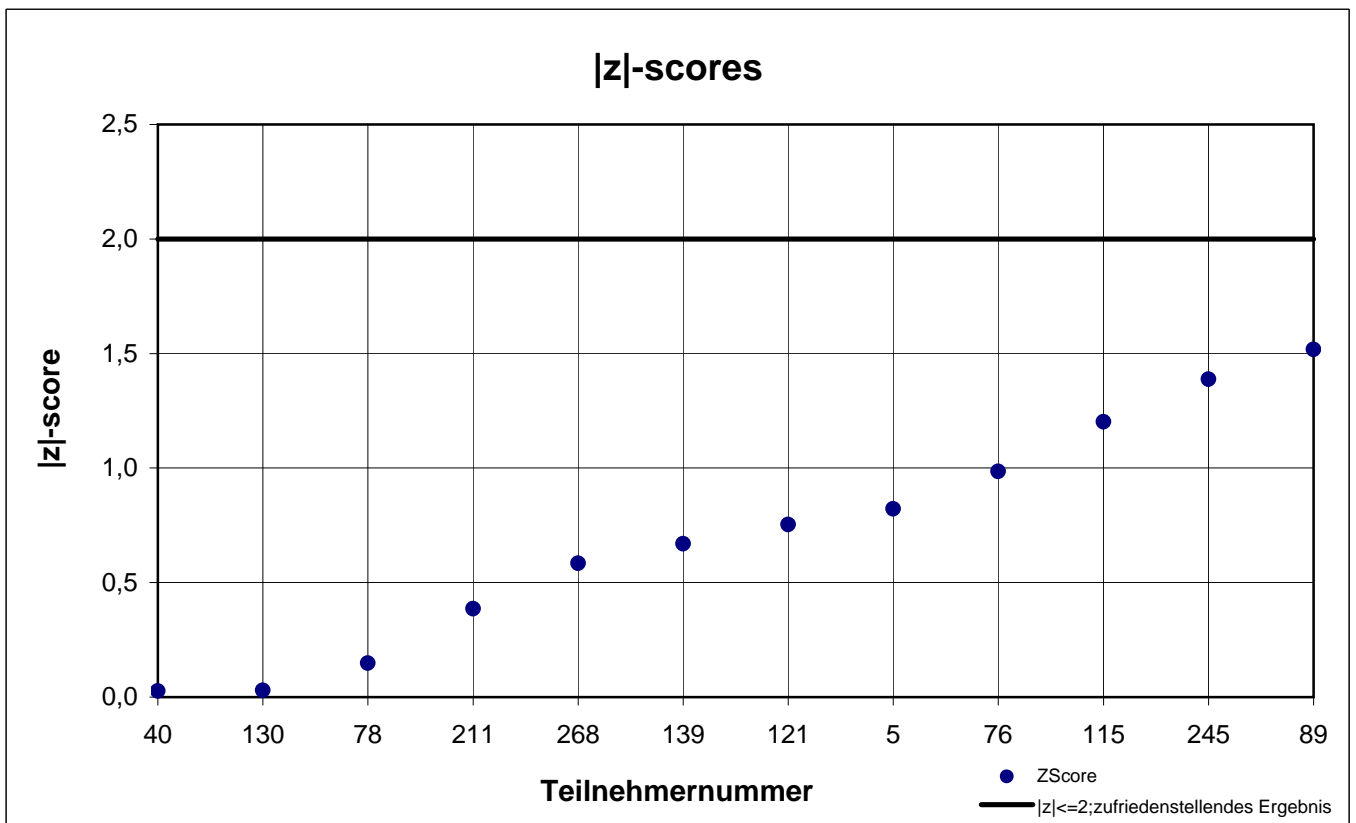
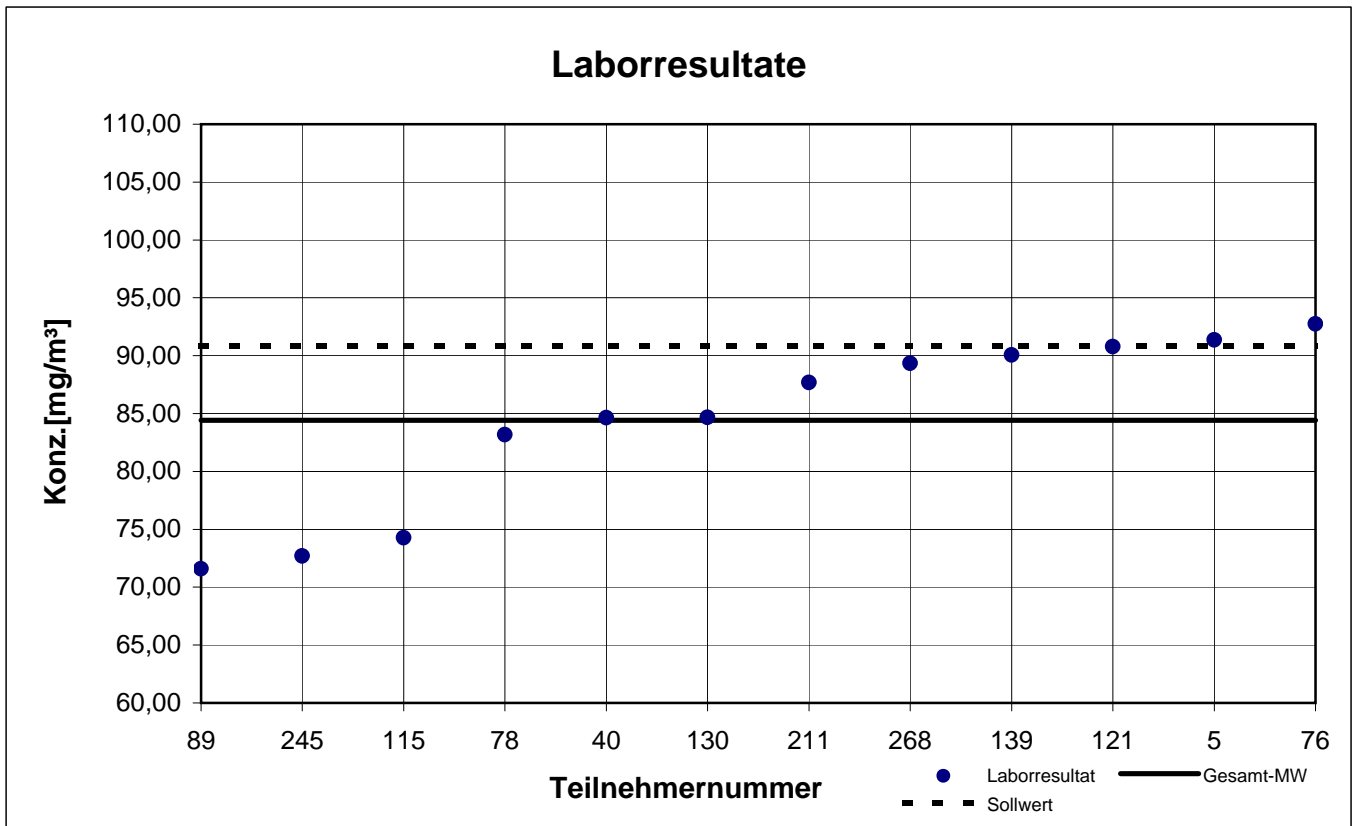
Probe 2

n-Butylacetat



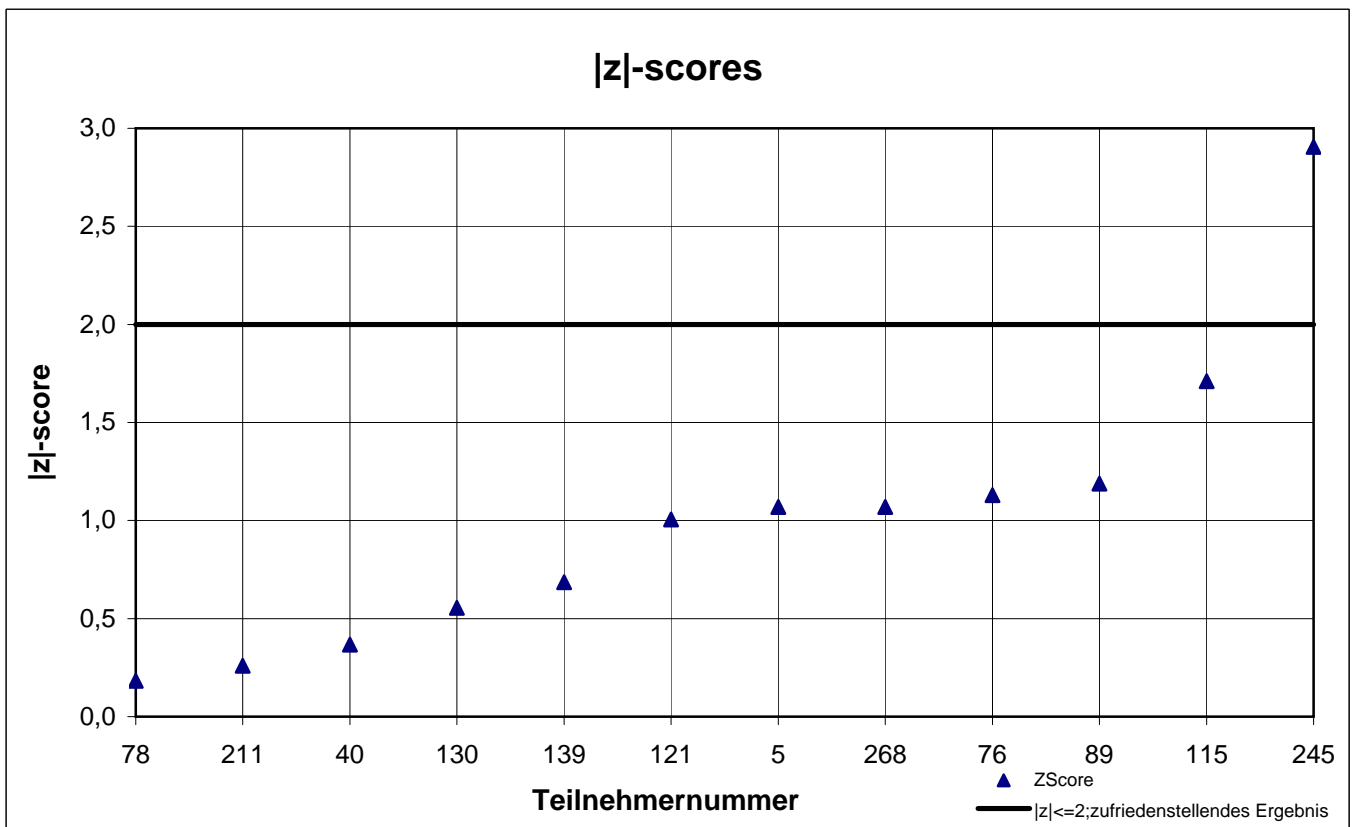
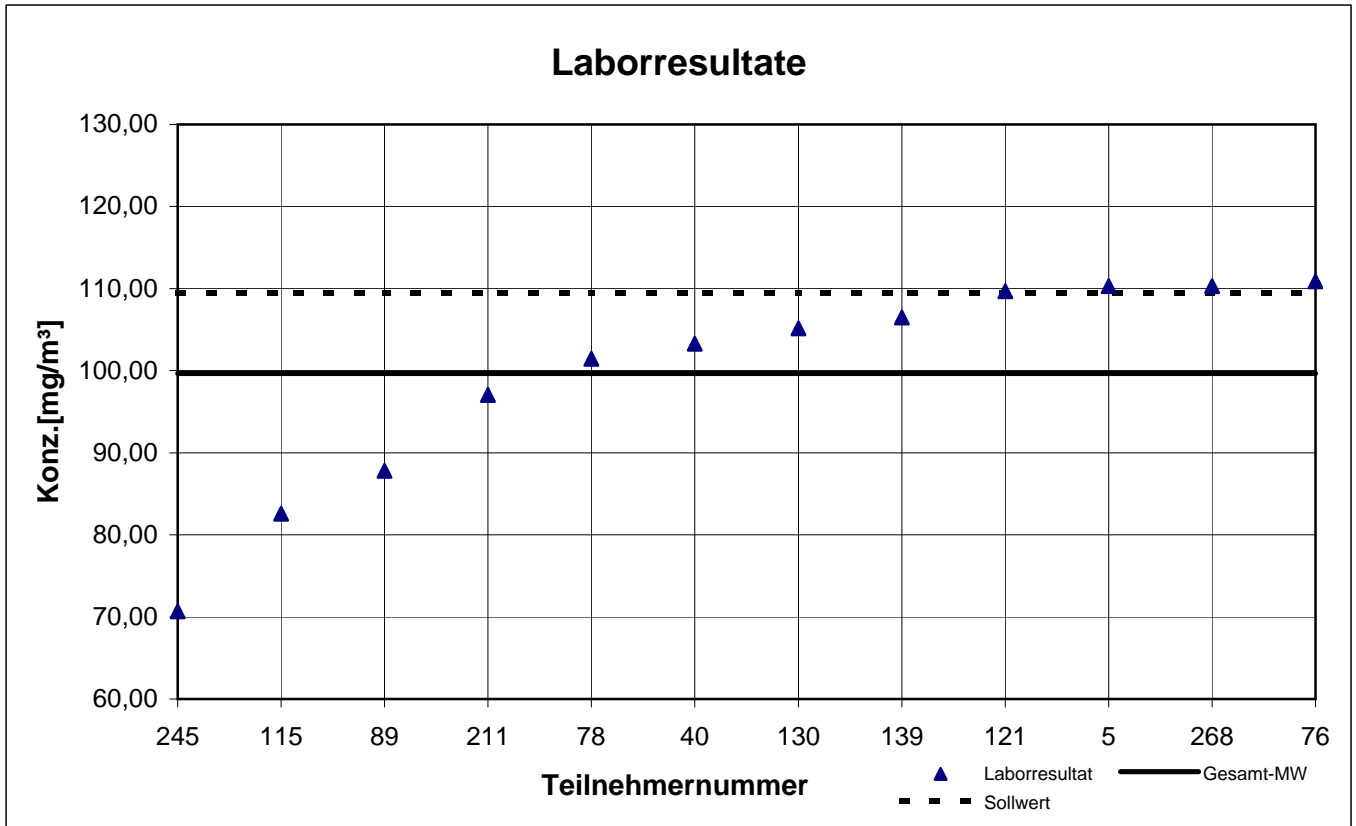
Probe 2

n-Heptan



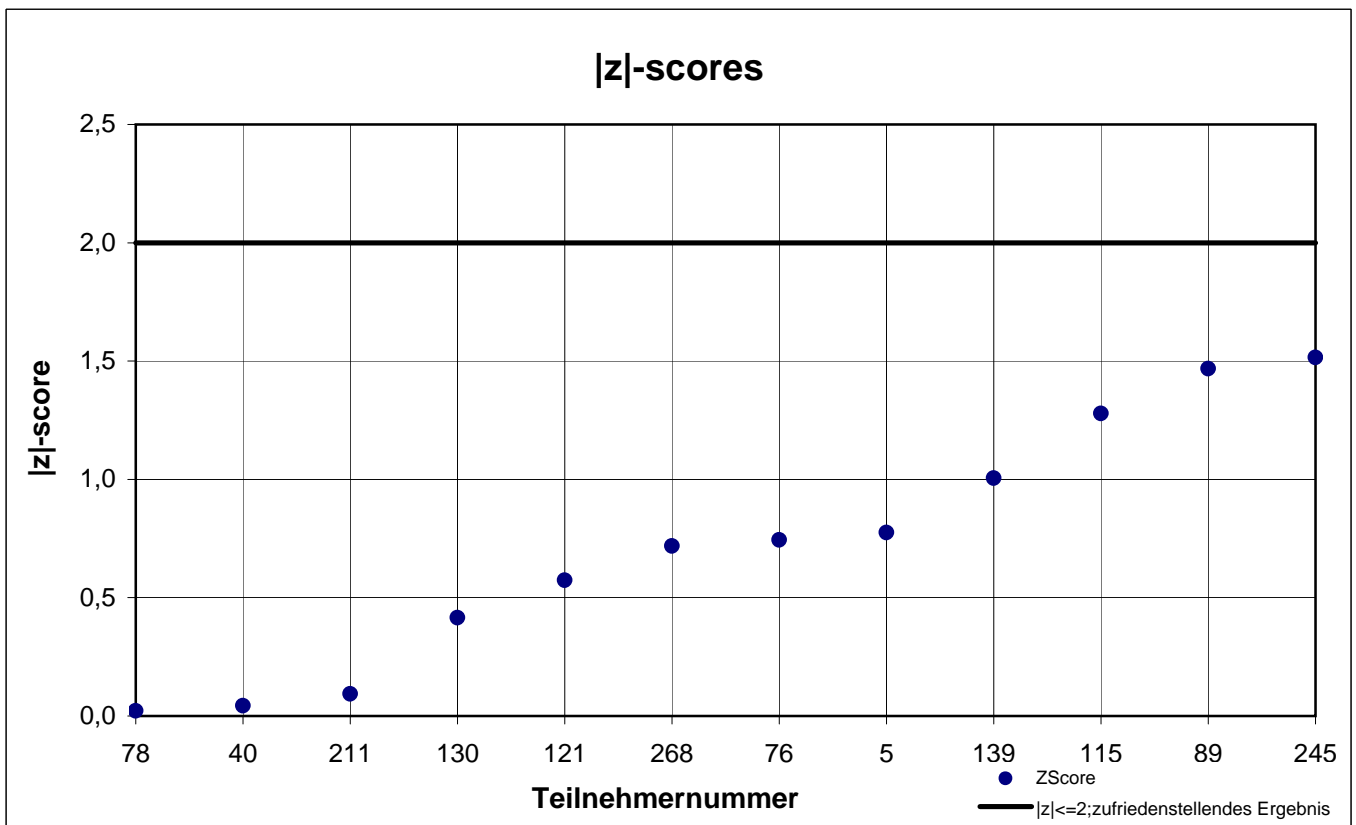
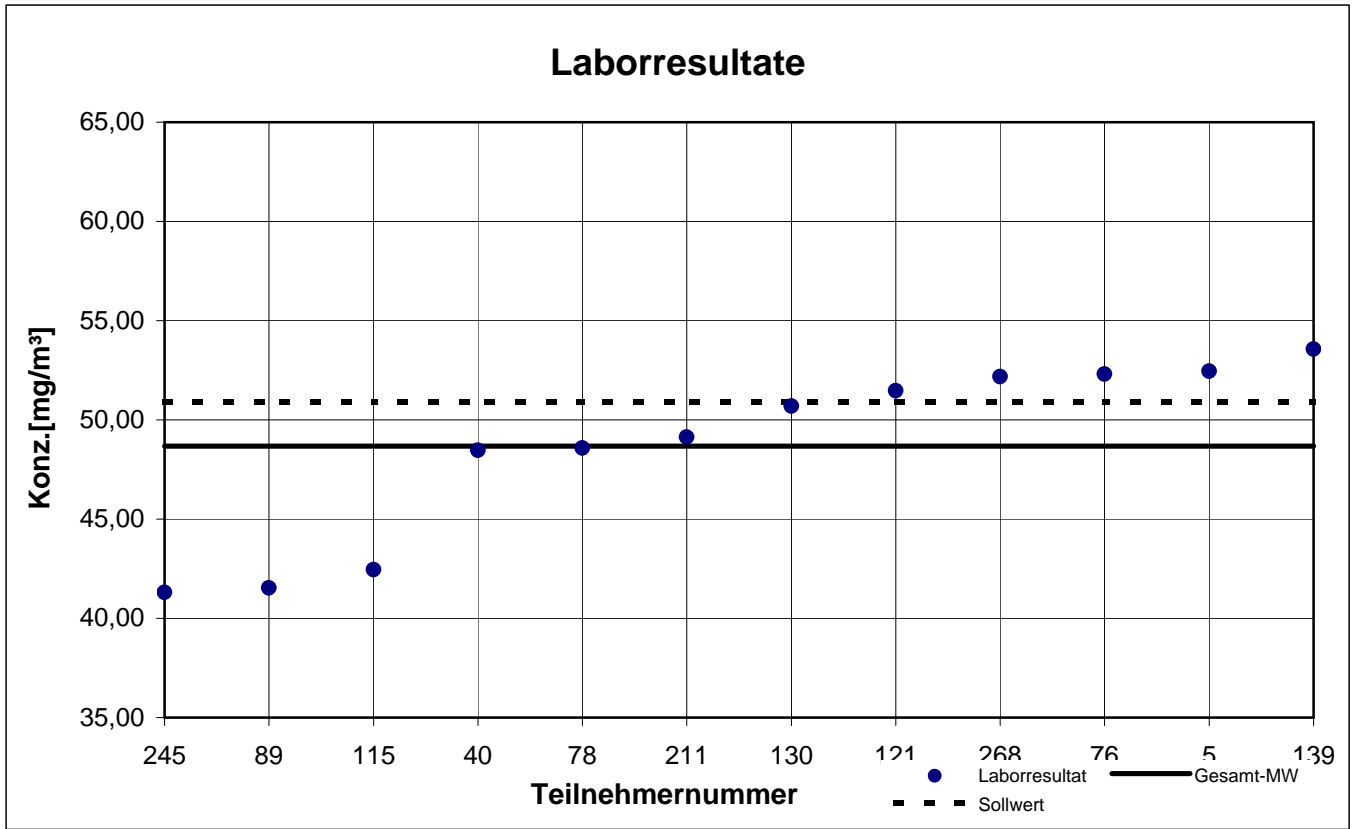
Probe 2

p-Xylol



Probe 2

Toluol



Gesamtauswertung Probe 3

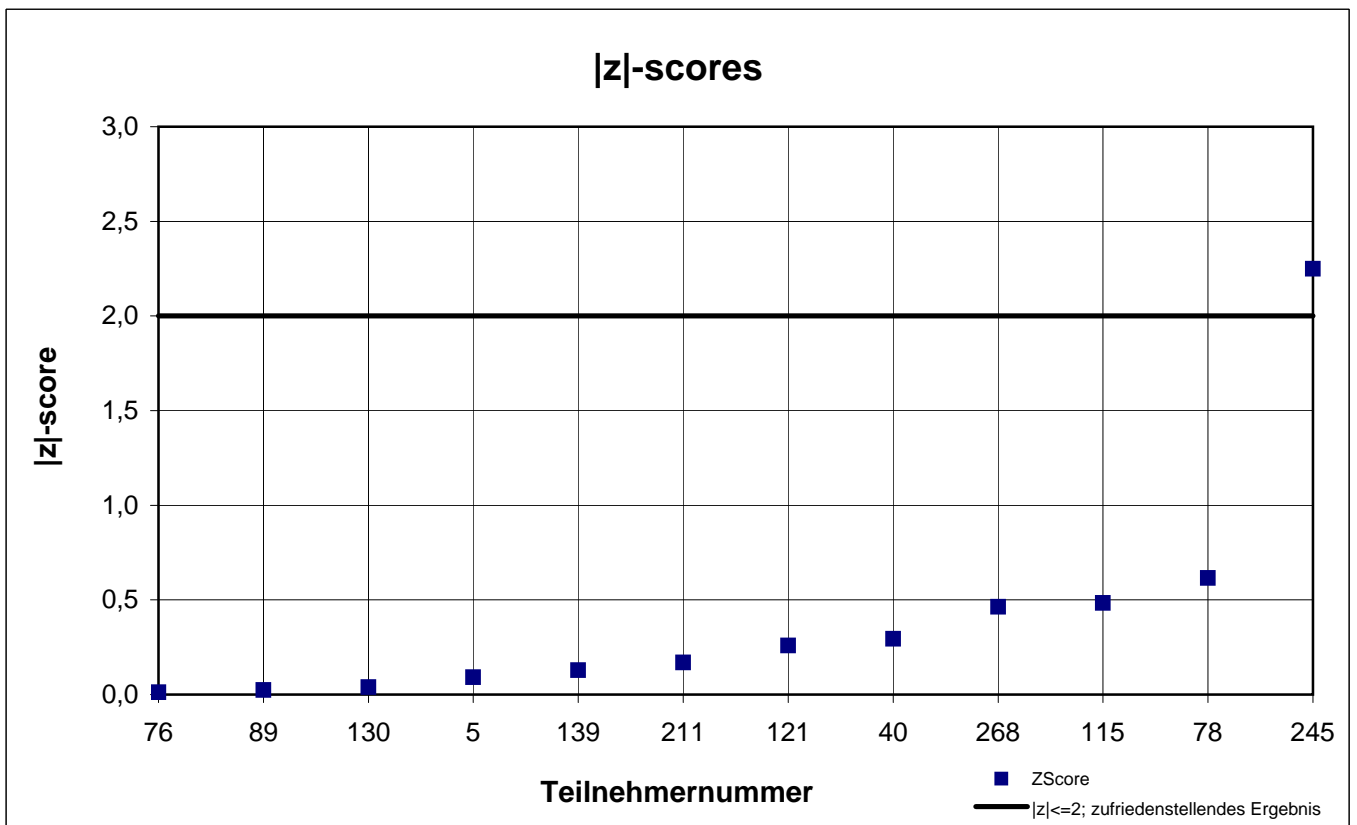
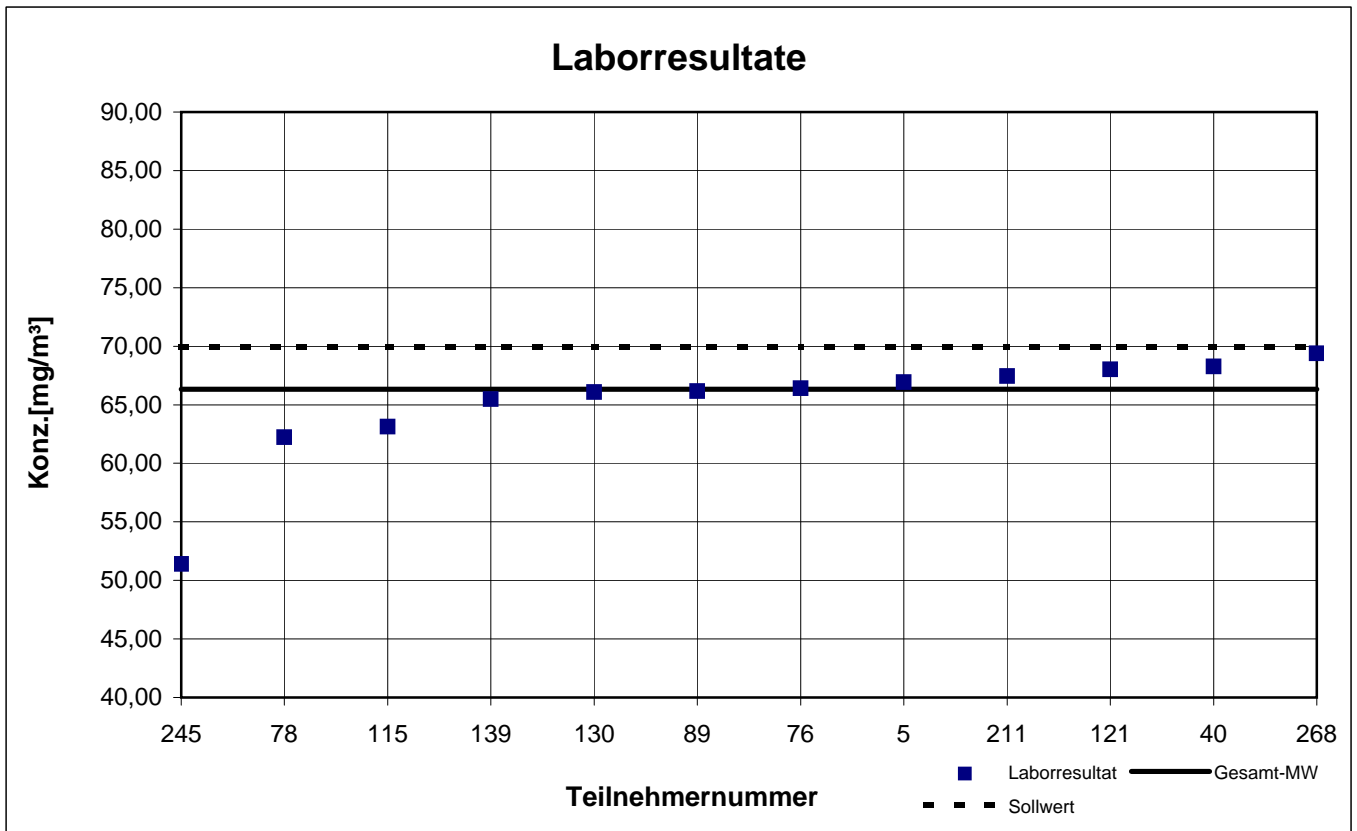
| Teilnehmer- nummer | 1-Methoxy-2-propanol | | 2-Butanol | | 2-Butoxyethanol | | i-Butanol | |
|-----------------------|--|------------|--|------------|--|------------|--|------------|
| | Labor- resultat [mg/m ³] | z - score | Labor- resultat [mg/m ³] | z - score | Labor- resultat [mg/m ³] | z - score | Labor- resultat [mg/m ³] | z - score |
| 5 | 66,93 | 0,1 | 85,98 | 0,5 | 39,93 | 0,5 | 75,24 | 0,3 |
| 40 | 68,27 | 0,3 | 72,67 | 1,1 | 44,20 | 0,5 | 64,00 | 1,2 |
| 76 | 66,40 | 0,0 | 86,30 | 0,6 | 41,73 | 0,1 | 75,97 | 0,4 |
| 78 | 62,24 | 0,6 | 80,35 | 0,2 | 38,65 | 0,8 | 70,20 | 0,4 |
| 89 | 66,17 | 0,0 | 82,10 | 0,0 | 41,07 | 0,2 | 76,73 | 0,5 |
| 115 | 63,12 | 0,5 | 74,05 | 0,9 | 40,19 | 0,4 | 68,13 | 0,7 |
| 121 | 68,03 | 0,3 | 84,10 | 0,3 | 48,00 | 1,4 | 77,67 | 0,6 |
| 130 | 66,07 | 0,0 | 84,90 | 0,4 | 42,67 | 0,1 | 75,23 | 0,3 |
| 139 | 65,47 | 0,1 | 80,93 | 0,1 | 45,03 | 0,7 | 71,73 | 0,2 |
| 211 | 67,44 | 0,2 | 86,08 | 0,5 | 36,53 | 1,3 | 77,06 | 0,5 |
| 245 | 51,40 | 2,2 | 53,60 | 3,4 | 22,40 | 4,7 | k.A. | k.A. |
| 268 | 69,39 | 0,5 | 82,25 | 0,1 | 44,90 | 0,7 | 72,13 | 0,1 |

Die mit gekennzeichneten Felder sind Ausreißer!

| | 1-Methoxy-2- propanol | 2-Butanol | 2-Butoxy- ethanol | i-Butanol |
|---|--------------------------|-----------|----------------------|-----------|
| Gesamtmittelwert c_k [mg/m ³] | 66,32 | 81,79 | 42,08 | 73,10 |
| Standardabweichung S_k [mg/m ³] | 2,134 | 4,665 | 3,293 | 4,311 |
| rel. Standardabweichung [%] | 3,22 | 5,70 | 7,83 | 5,90 |
| Sollwert (Belegungskonzentration) [mg/m ³] | 69,90 | 86,30 | 41,80 | 77,90 |

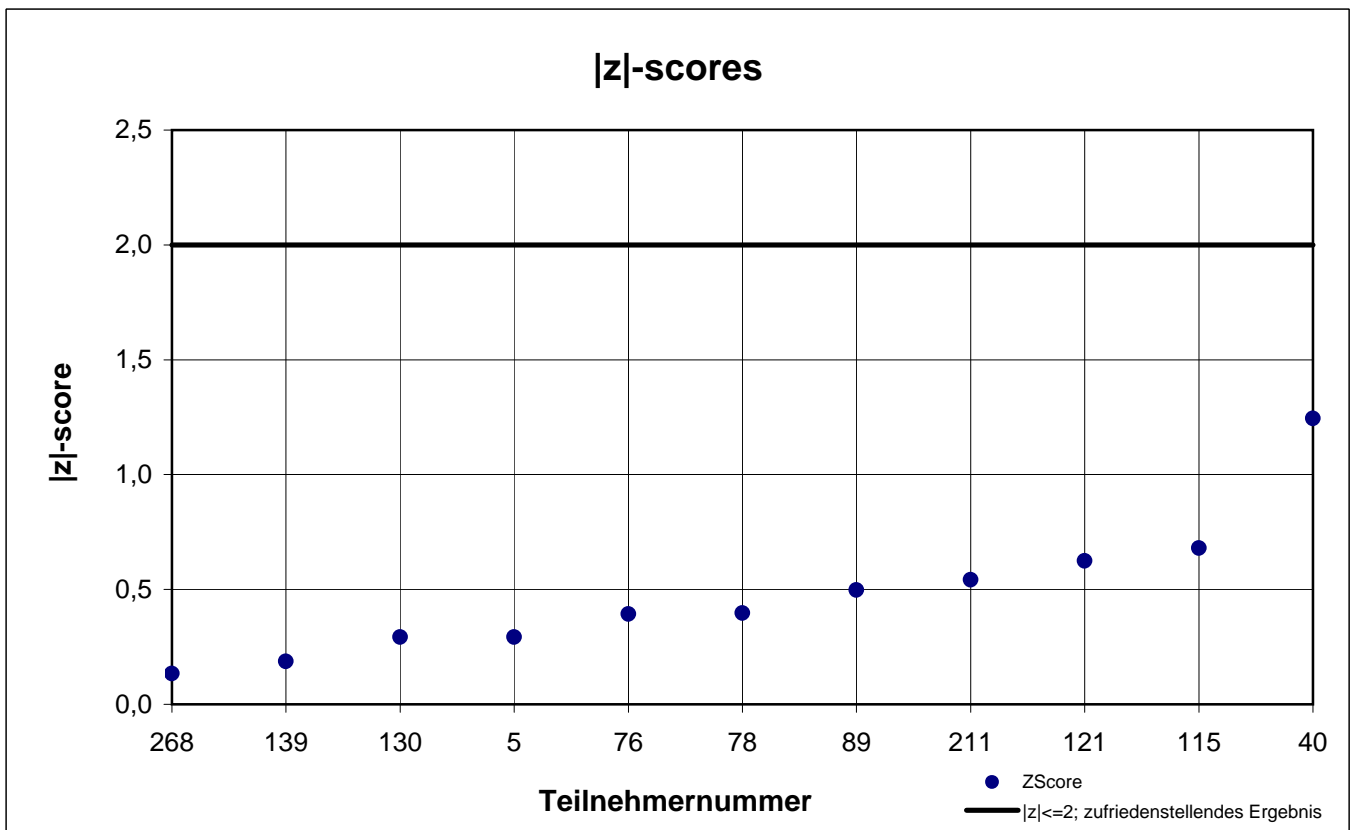
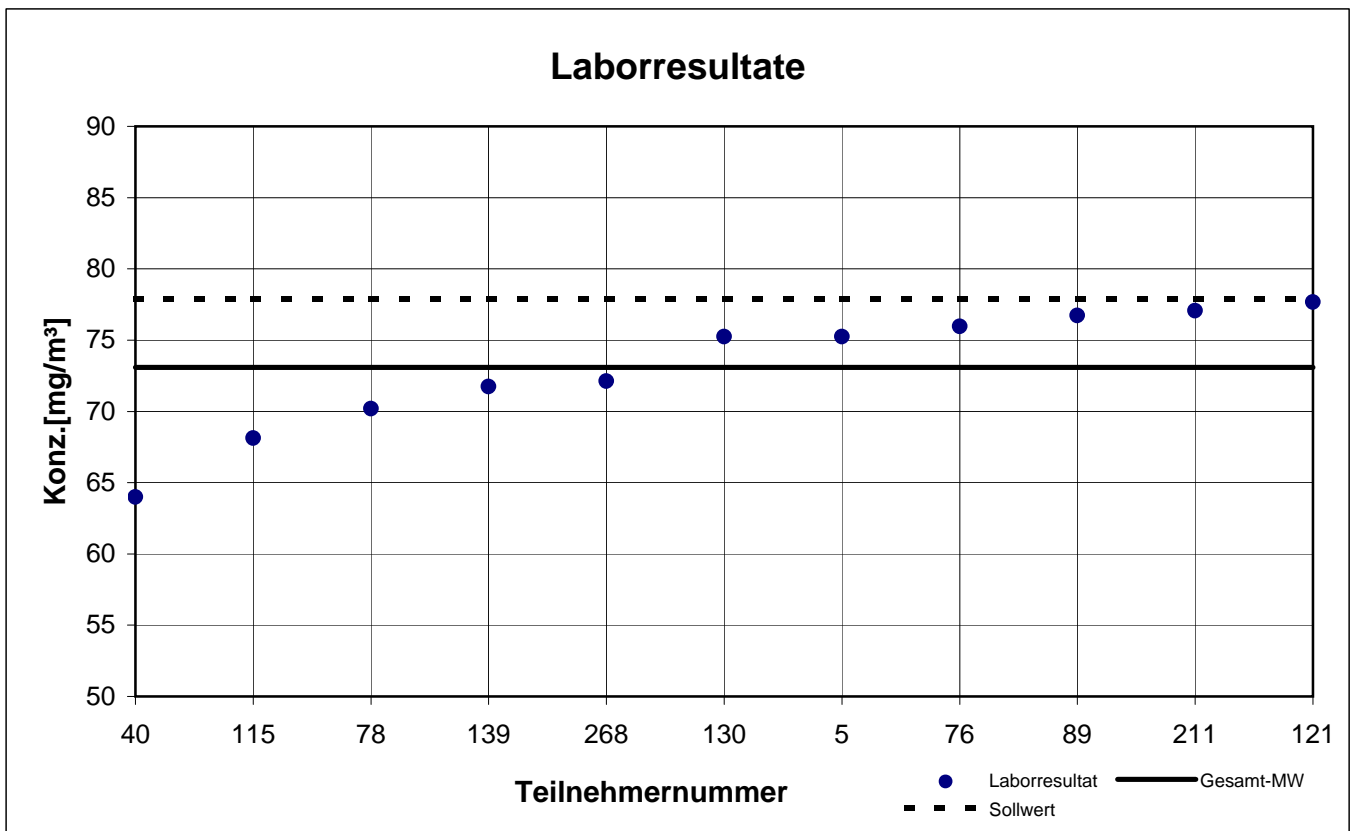
Probe 3

1-Methoxy-2-propanol



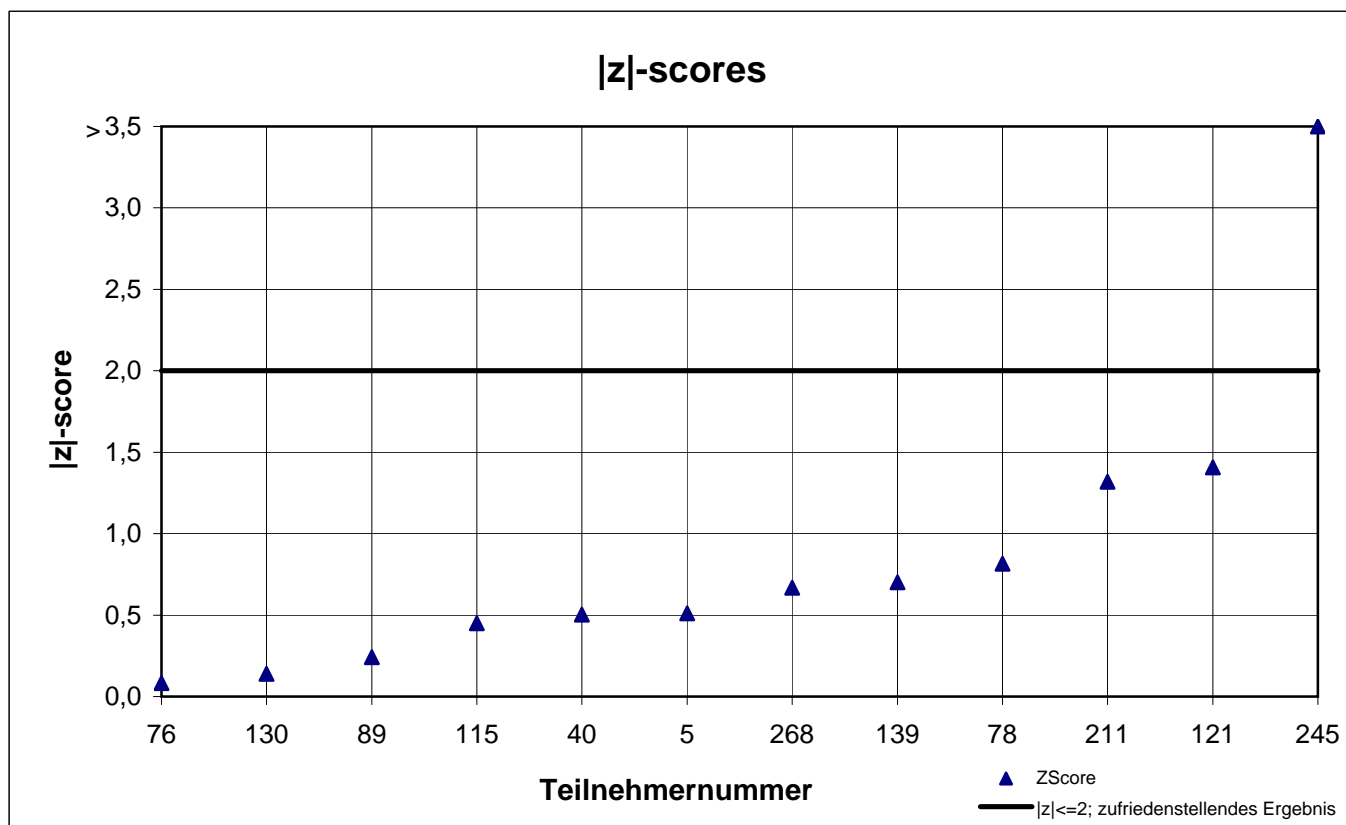
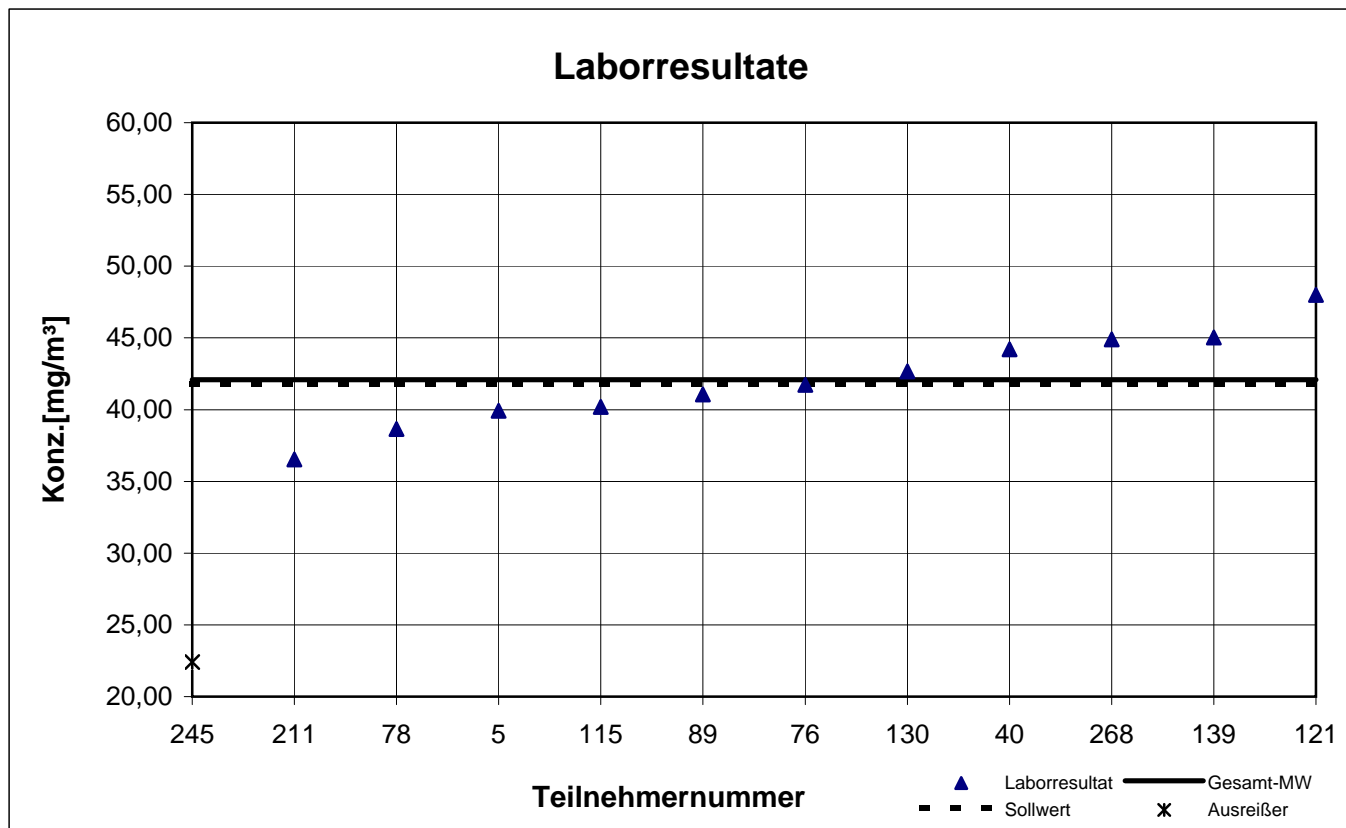
Probe 3

i-Butanol



Probe 3

2-Butoxyethanol



Probe 3

2-Butanol

