

results TYP-B - sample 1

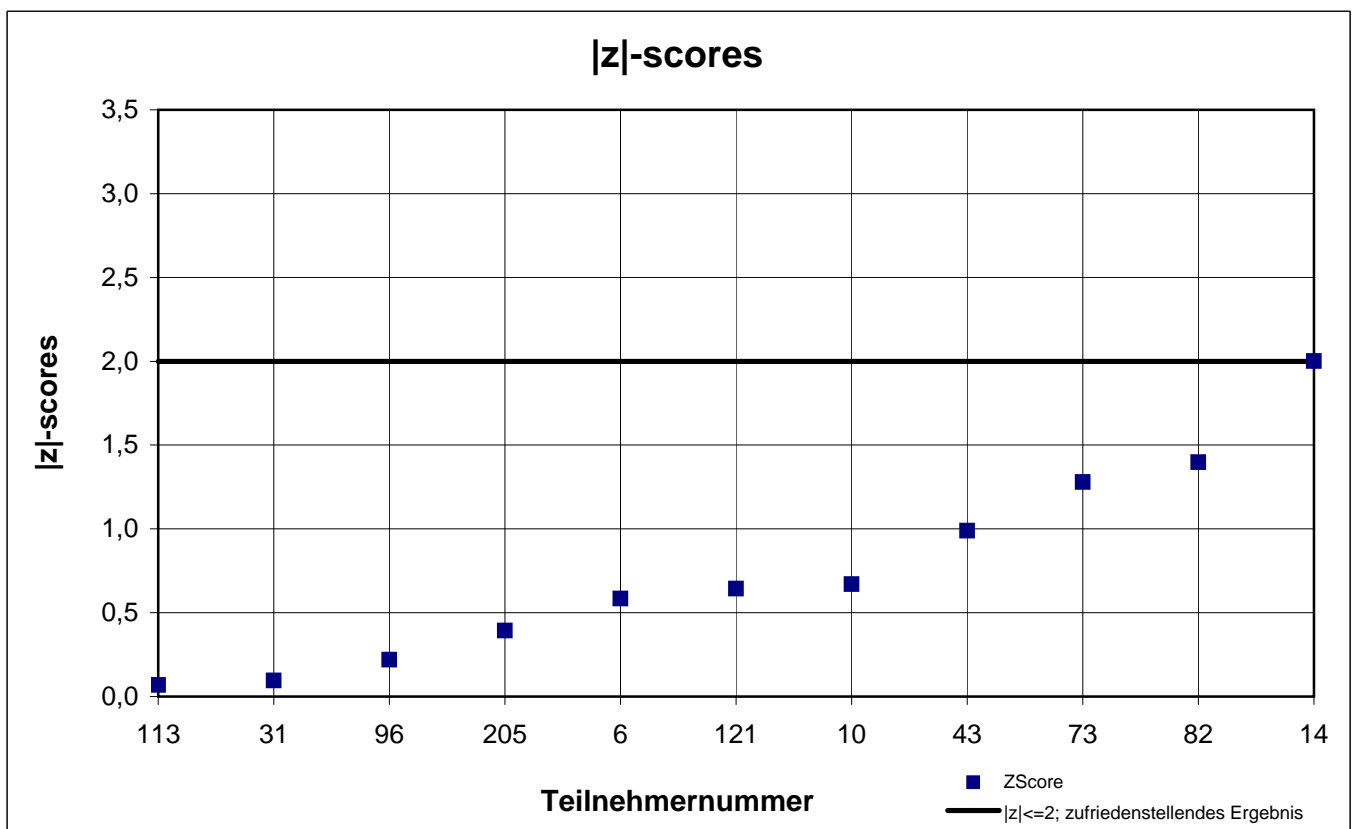
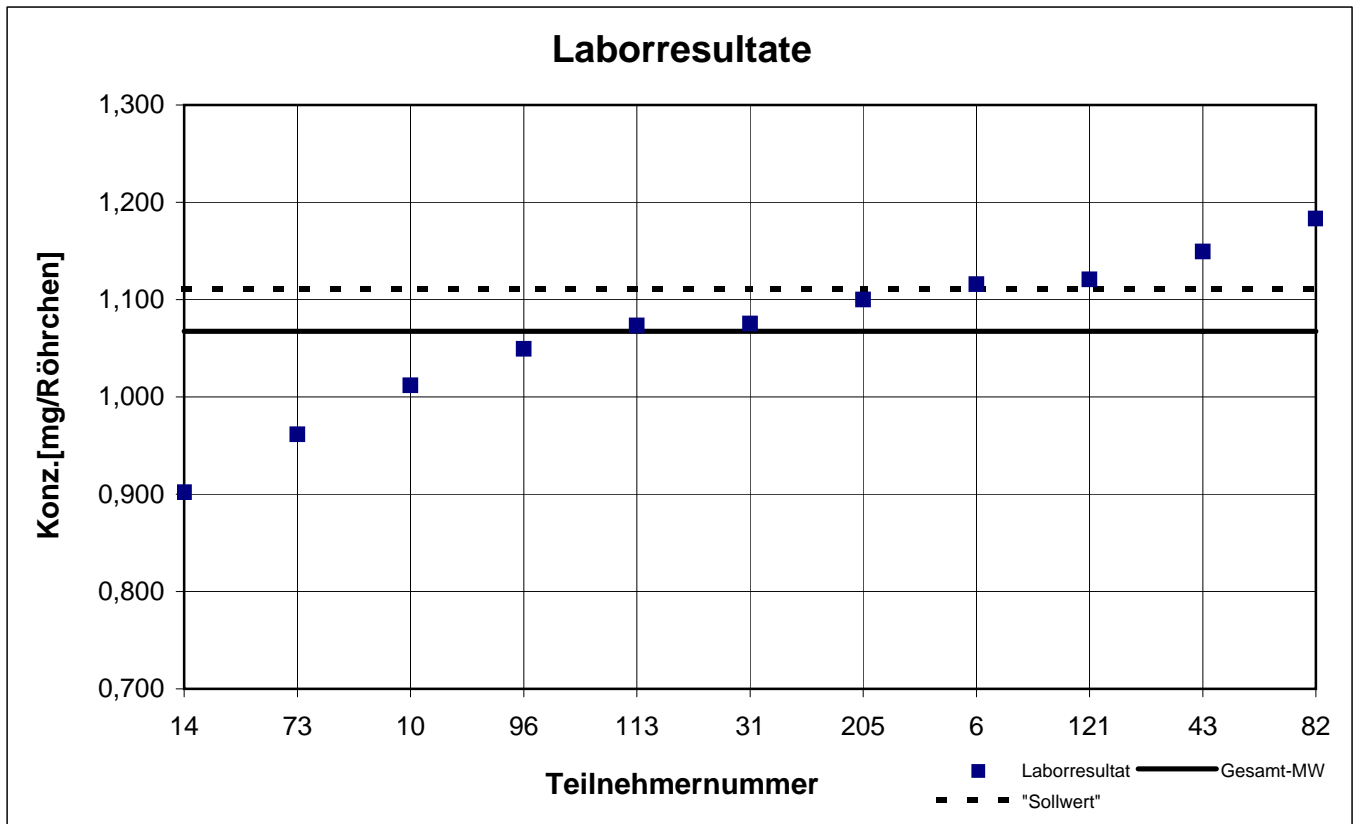
participant number	i-butyl acetate		n-butyl acetate		o-xylene	
	result [mg/tube]	z - score	result [mg/tube]	z - score	result [mg/tube]	z - score
6	1,116	0,6	0,220	2,3	0,206	1,8
10	1,012	0,7	0,158	1,1	0,189	0,0
14	0,902	2,0	0,160	1,0	0,180	0,9
25	k.A.	k.A.	k.A.	k.A.	0,177	1,3
31	1,075	0,1	0,179	0,0	0,189	0,0
43	1,149	1,0	0,176	0,1	0,182	0,8
73	0,962	1,3	0,187	0,5	0,182	0,8
82	1,183	1,4	0,156	1,2	0,195	0,6
96	1,049	0,2	0,169	0,5	0,188	0,2
113	1,073	0,1	k.A.	k.A.	0,285	10,0
121	1,121	0,6	0,185	0,4	0,205	1,6
173	k.A.	k.A.	0,170	0,5	0,230	4,2
205	1,100	0,4	0,200	1,2	0,190	0,1
252	k.A.	k.A.	k.A.	k.A.	k.A.	k.A.

 marked fields are outliers!

	i-butyl acetate	n-butyl acetate	o-xylene
mean c_k [mg / tube]	1,068	0,178	0,189
standard deviation S_k [mg / tube]	0,0827	0,0193	0,0095
relative standard deviation [%]	7,75	10,83	5,04

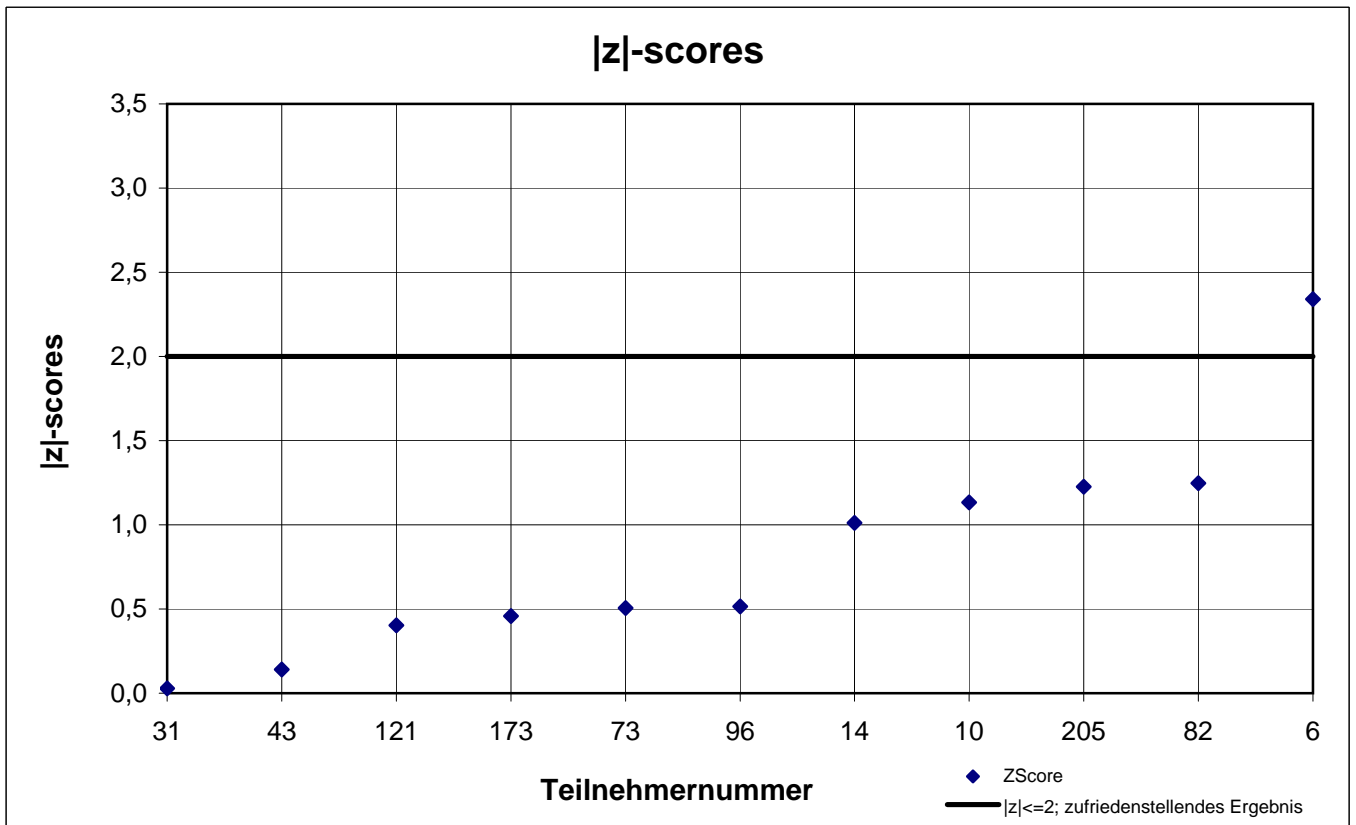
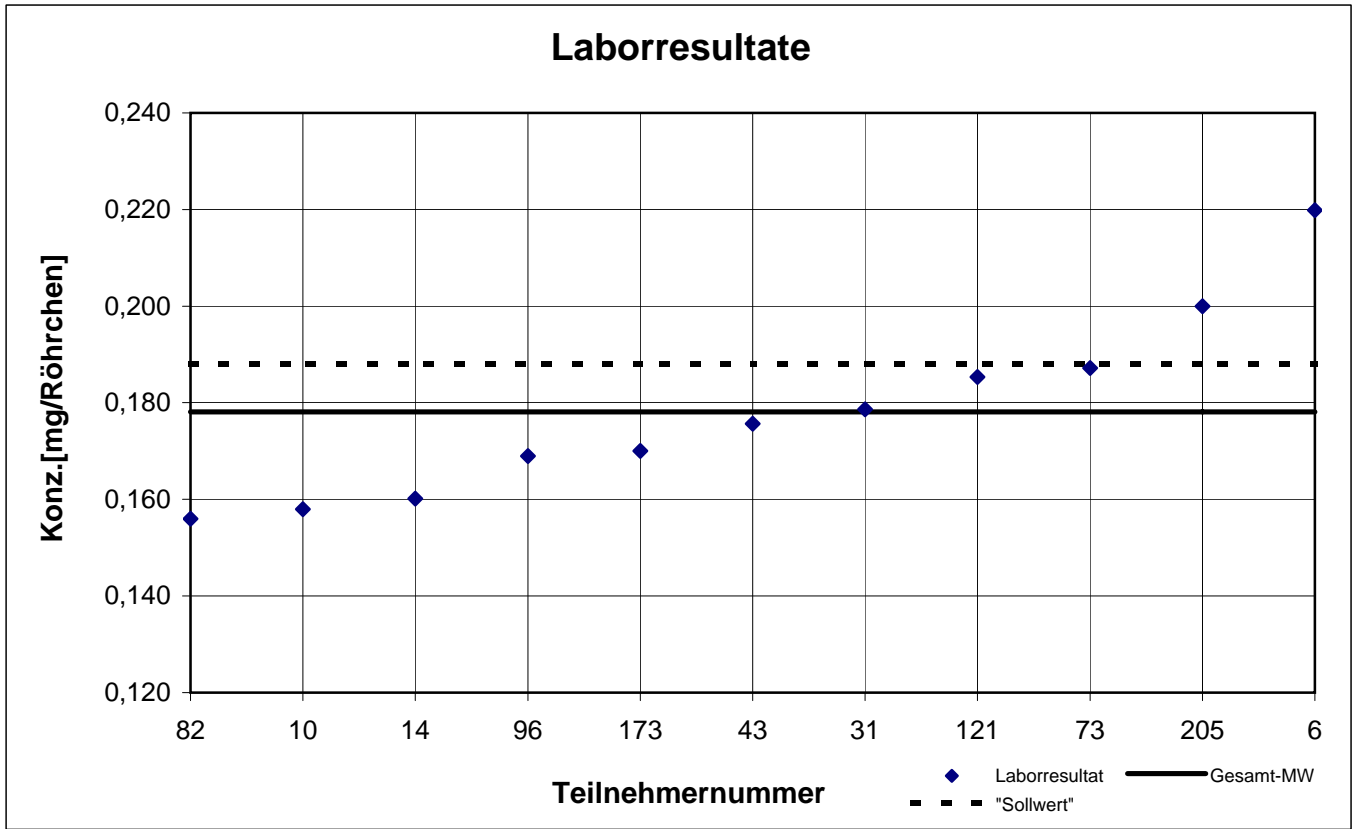
Typ-B -Probe 1

i-Butylacetat



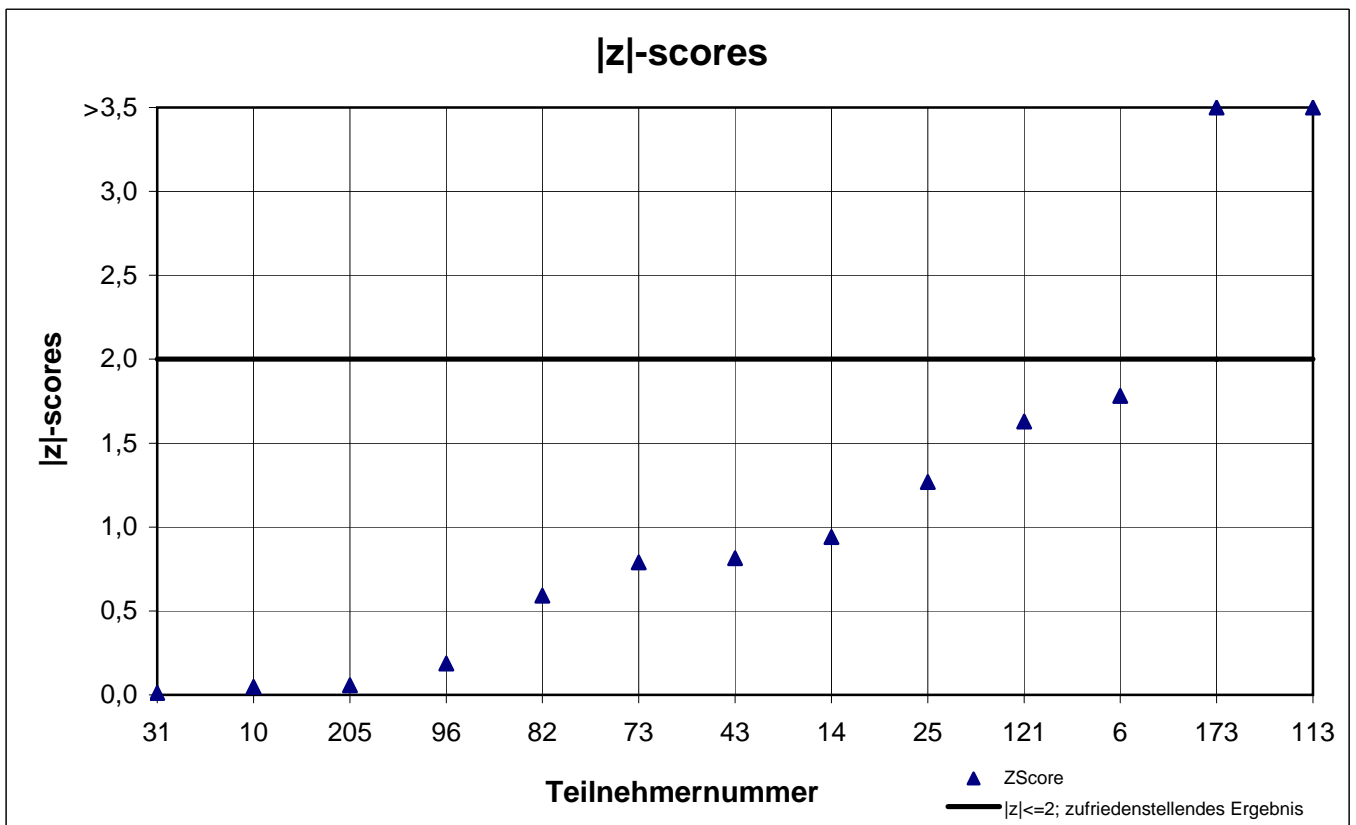
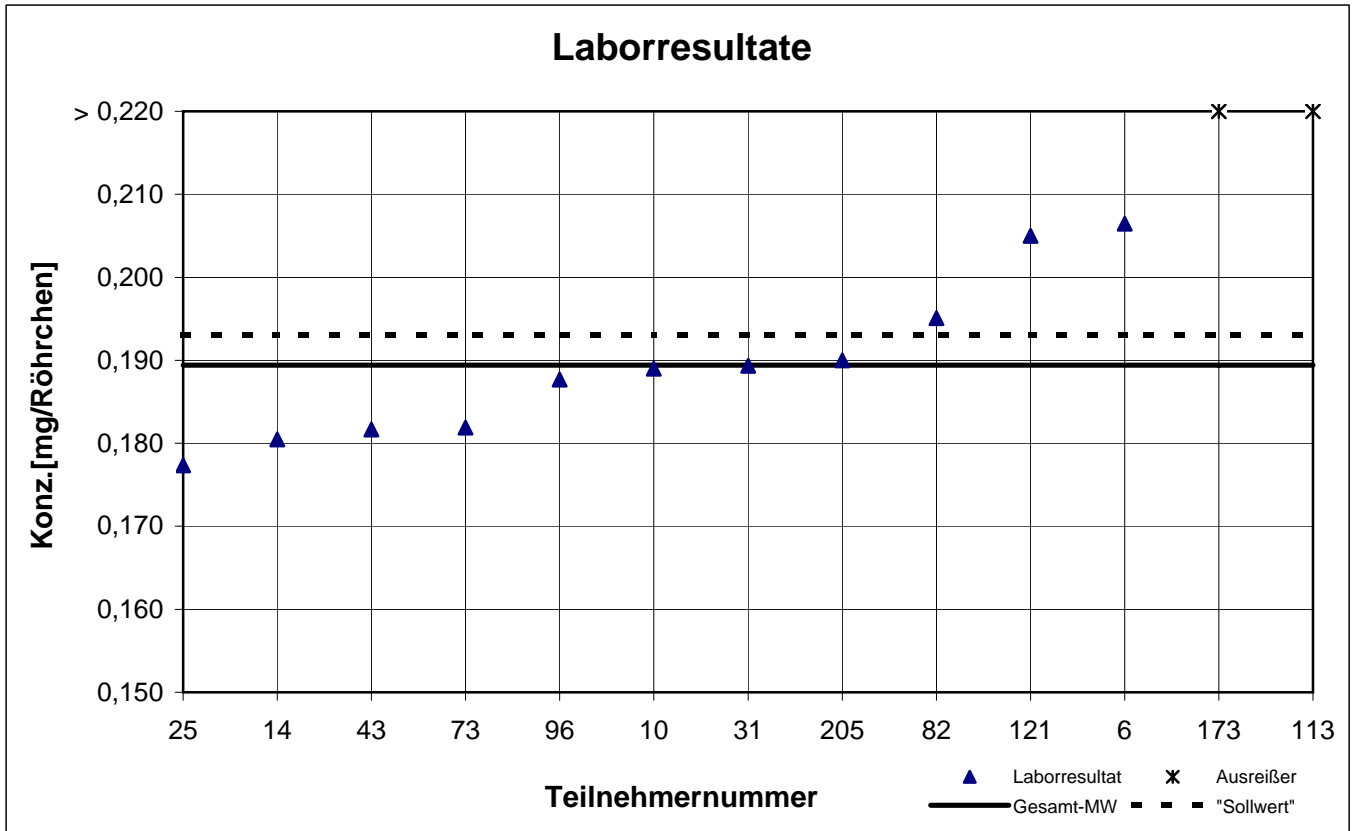
Typ-B -Probe 1

n-Butylacetat



Typ-B -Probe 1

o-Xylol



results TYP-B - sample 2

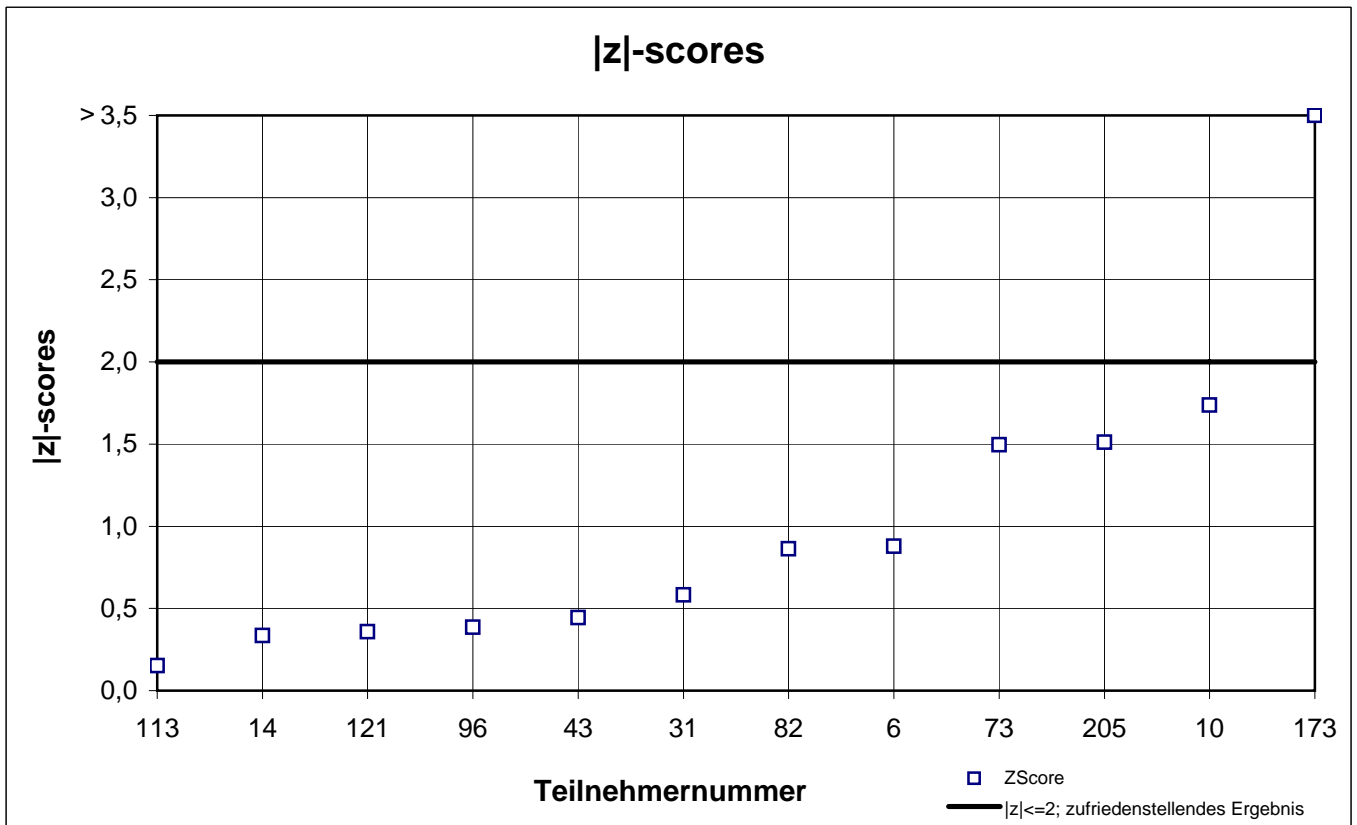
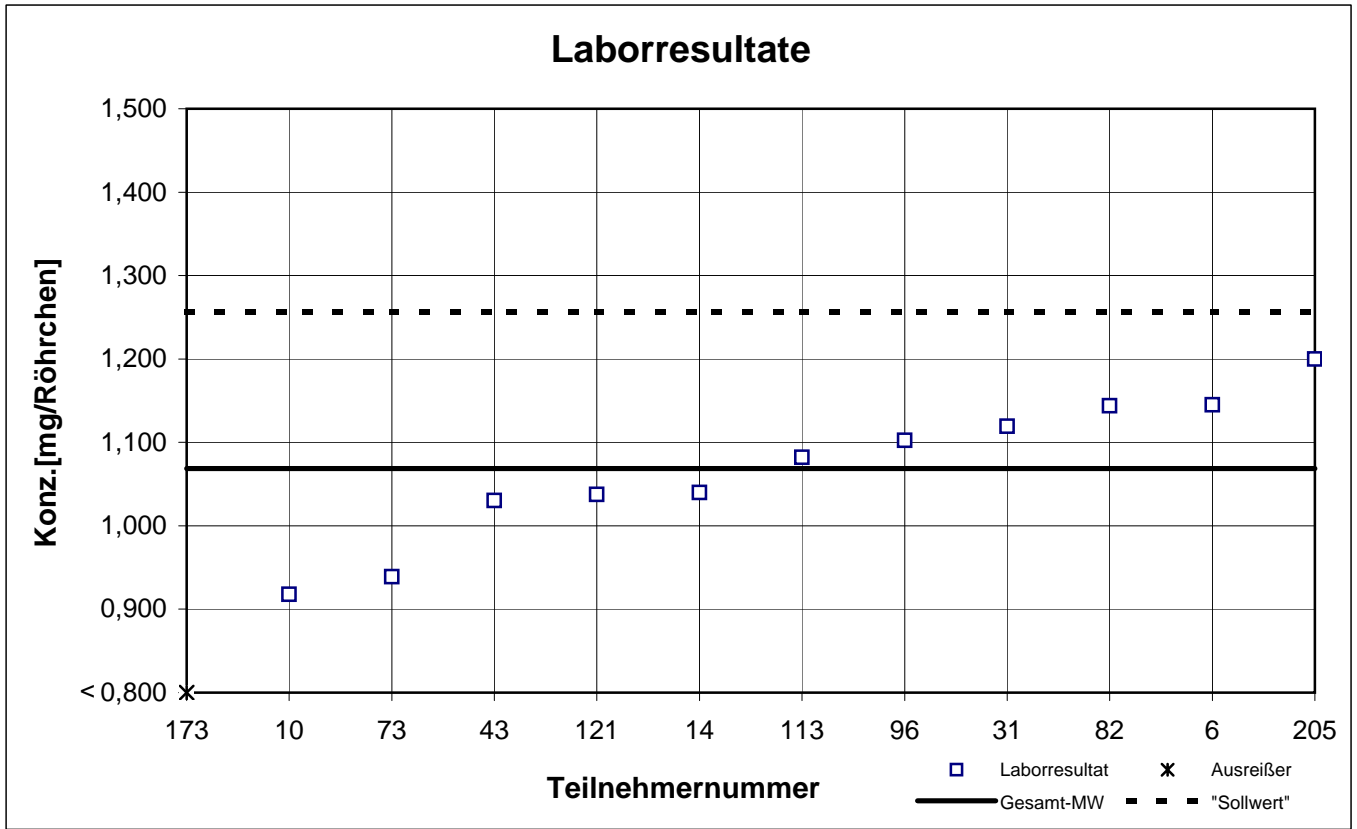
participant number	ethyl acetate		n-heptane		o-xylene		toluene	
	result [mg/tube]	z - score	result [mg/tube]	z - score	result [mg/tube]	z - score	result [mg/tube]	z - score
6	1,145	0,9	1,253	0,0	0,239	1,1	5,183	0,3
10	0,918	1,7	1,389	1,3	0,206	0,9	5,167	0,3
14	1,040	0,3	1,077	1,7	0,220	0,1	4,788	0,5
25	k.A.	k.A.	k.A.	k.A.	0,203	1,1	3,044	3,9
31	1,119	0,6	1,206	0,5	0,228	0,5	5,178	0,3
43	1,030	0,4	1,169	0,8	0,209	0,7	4,950	0,1
73	0,939	1,5	1,325	0,7	0,208	0,8	4,753	0,5
82	1,144	0,9	k.A.	k.A.	0,225	0,3	5,505	1,0
96	1,102	0,4	1,153	1,0	0,211	0,6	4,943	0,2
113	1,082	0,2	1,388	1,3	0,257	2,3	5,076	0,1
121	1,038	0,4	1,290	0,3	0,230	0,6	5,266	0,5
173	0,600	5,4	0,840	4,0	0,150	4,4	2,800	4,4
205	1,200	1,5	1,300	0,4	0,210	0,6	5,200	0,4
252	k.A.	k.A.	k.A.	k.A.	k.A.	k.A.	4,280	1,5

 marked fields are outliers!

	ethyl acetate	n-heptane	o-xylene	toluene
mean c_k [mg / tube]	1,069	1,255	0,220	5,024
standard deviation S_k [mg / tube]	0,0868	0,1031	0,0160	0,3144
relative standard deviation [%]	8,12	8,22	7,27	6,26

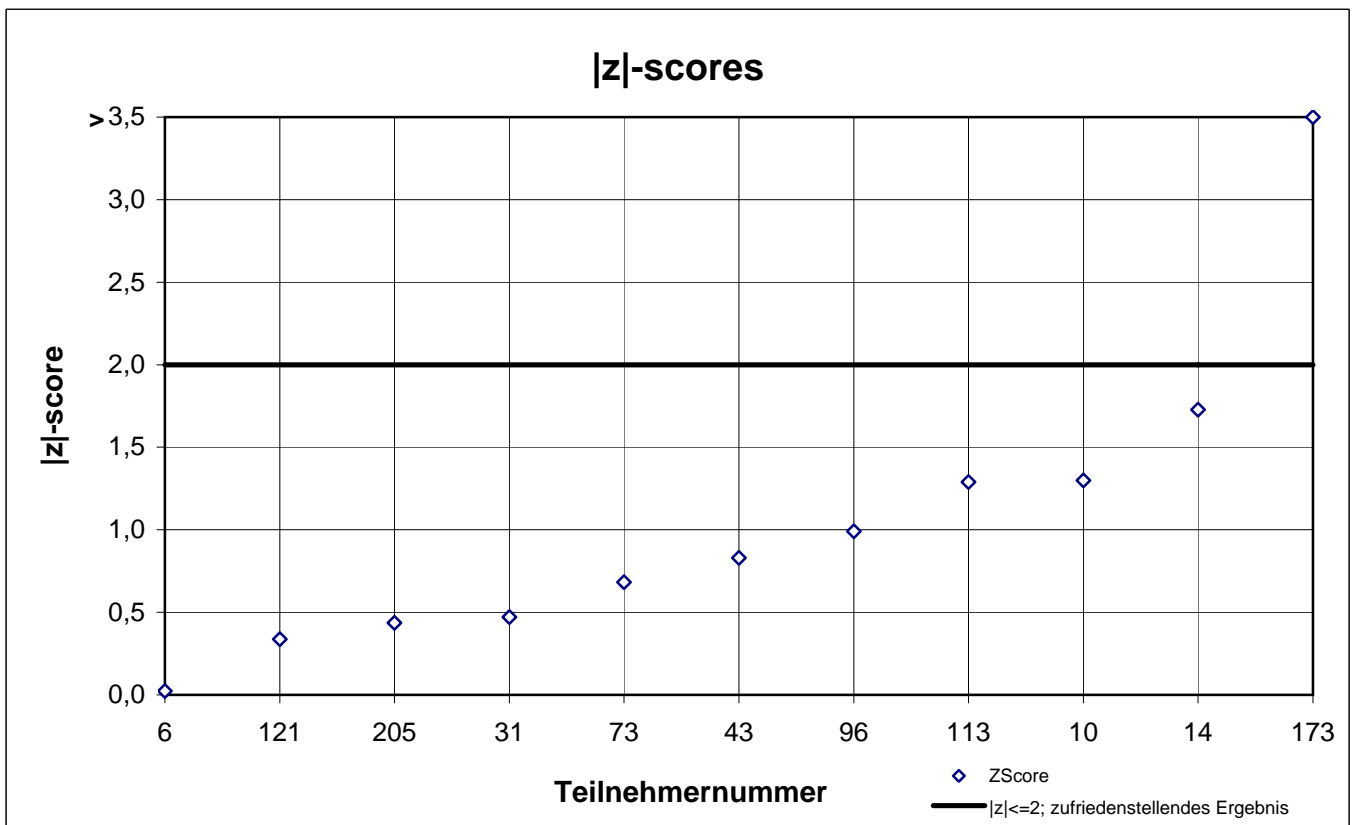
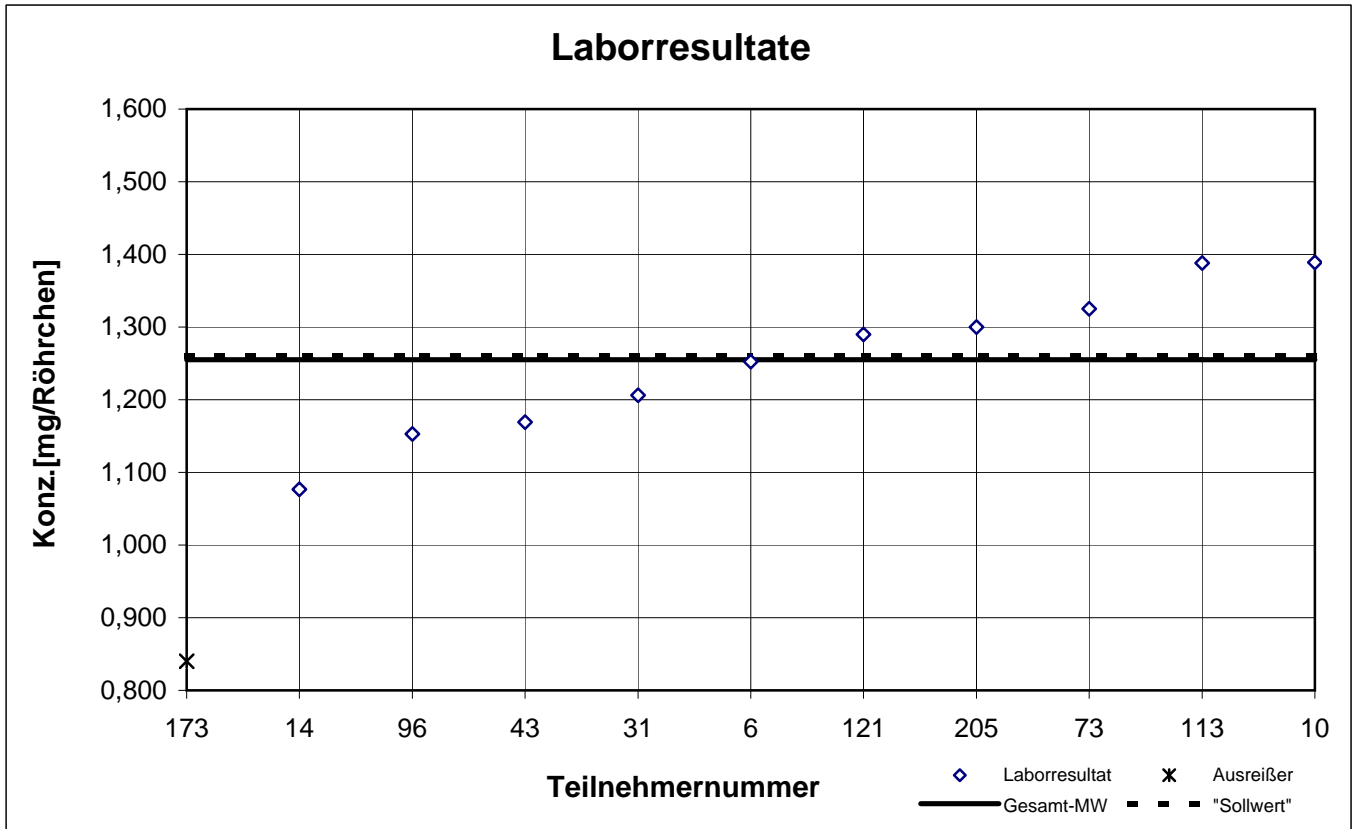
Typ-B -Probe 2

Ethylacetat



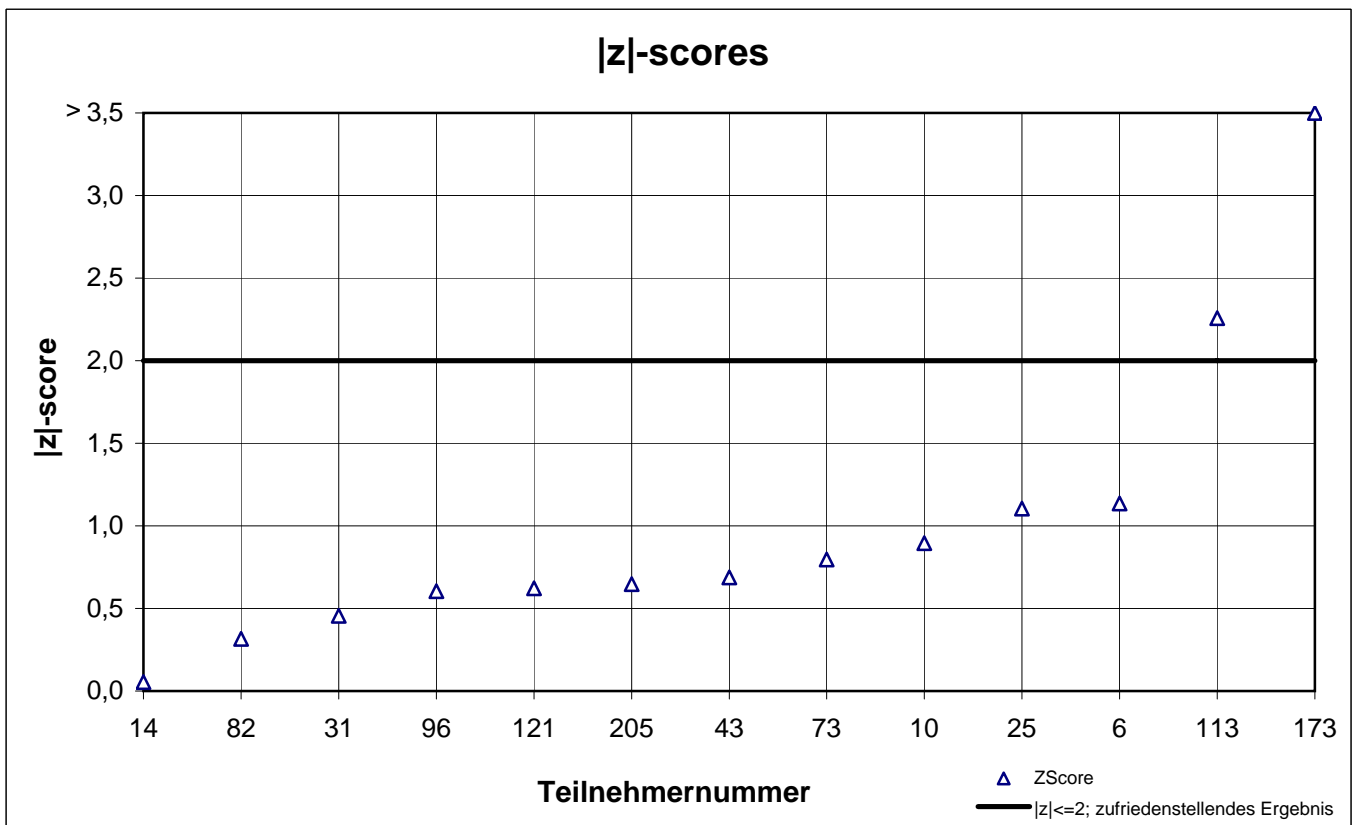
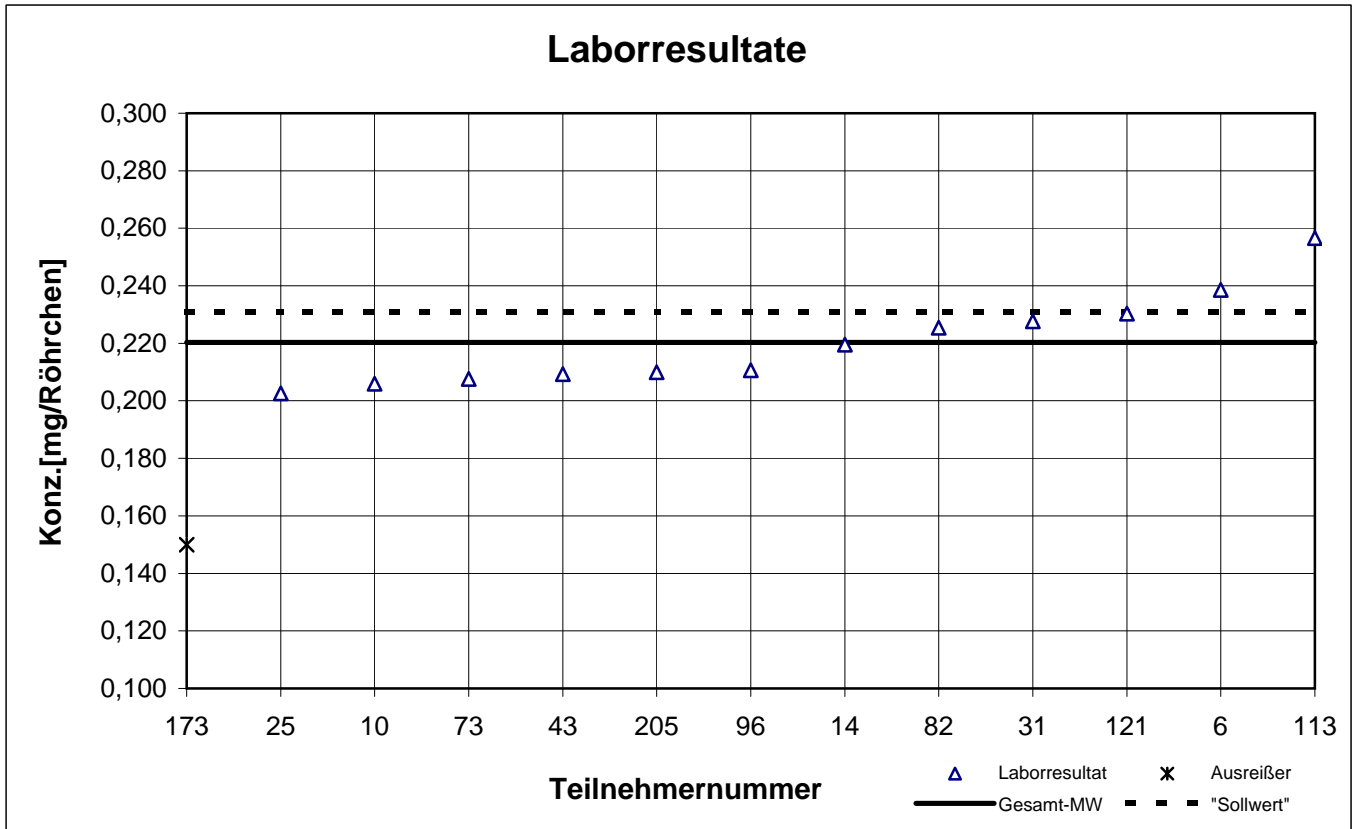
Typ-B -Probe 2

n-Heptan



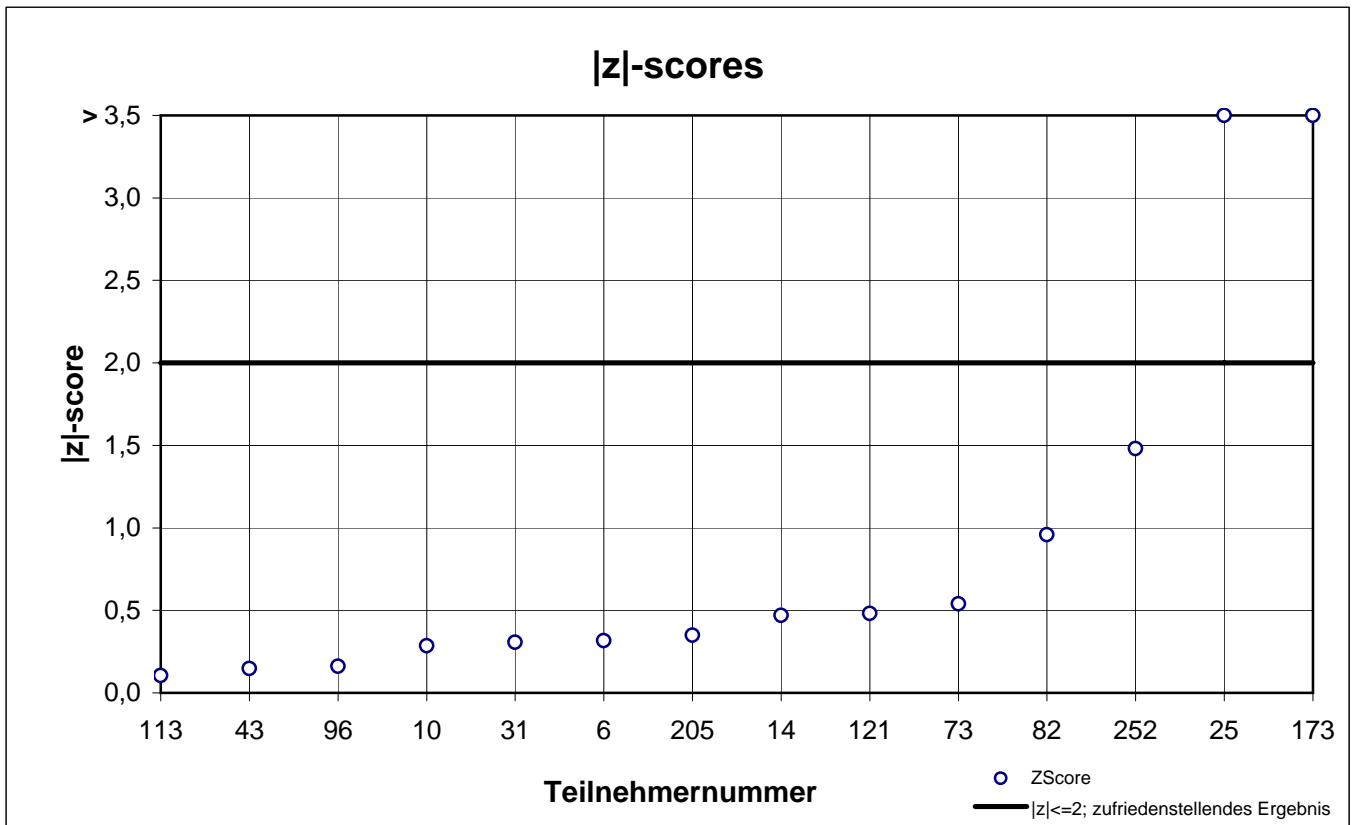
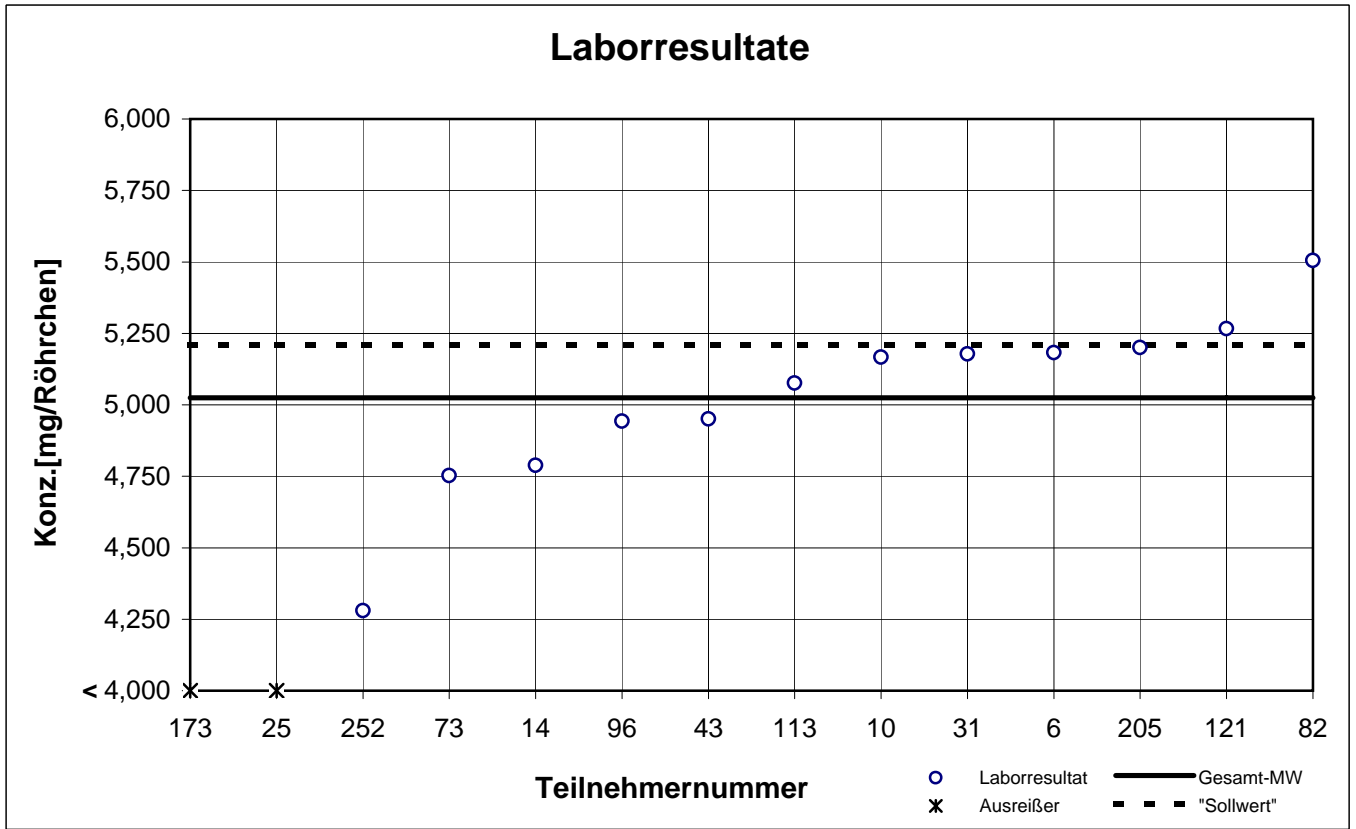
Typ-B -Probe 2

o-Xylol



Typ-B -Probe 2

Toluol



results TYP-B - sample 3

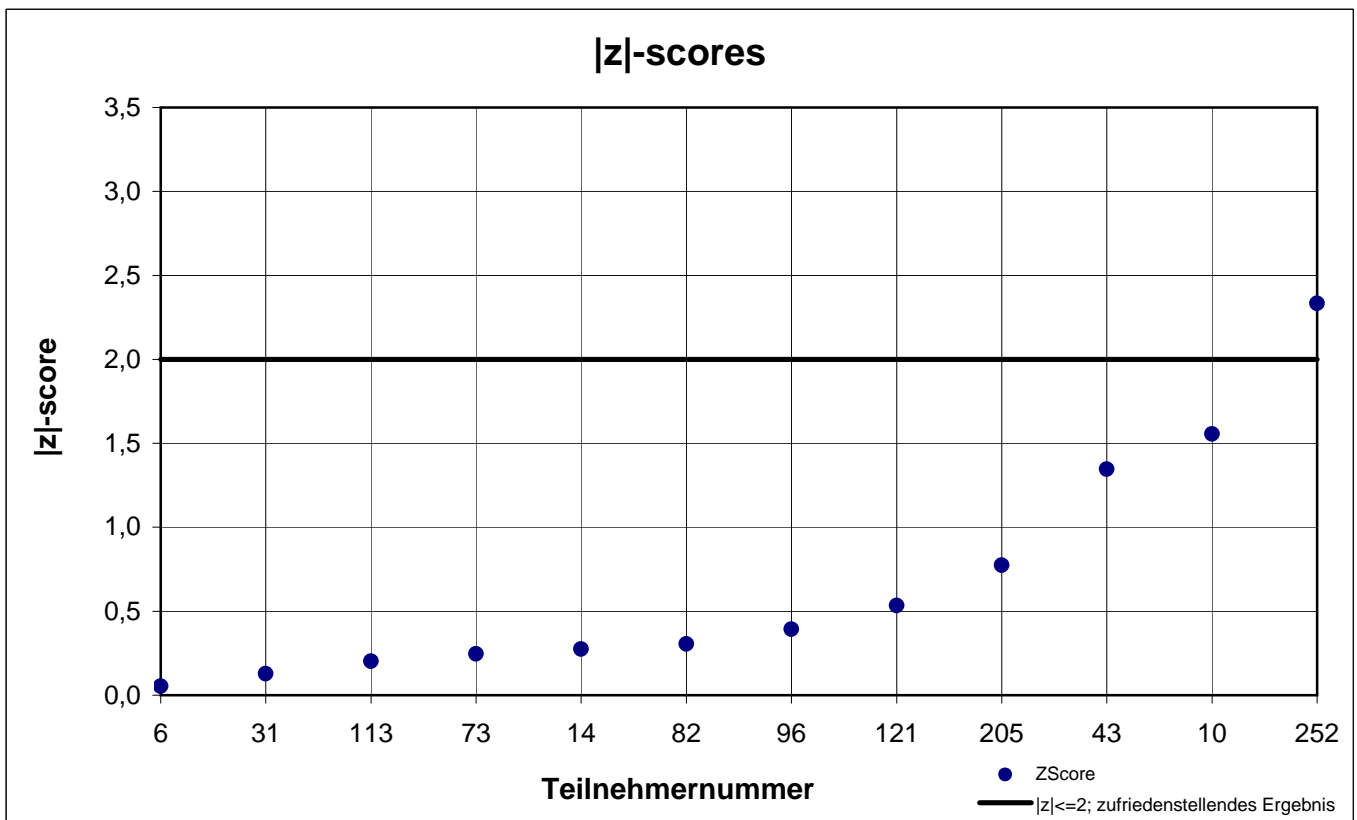
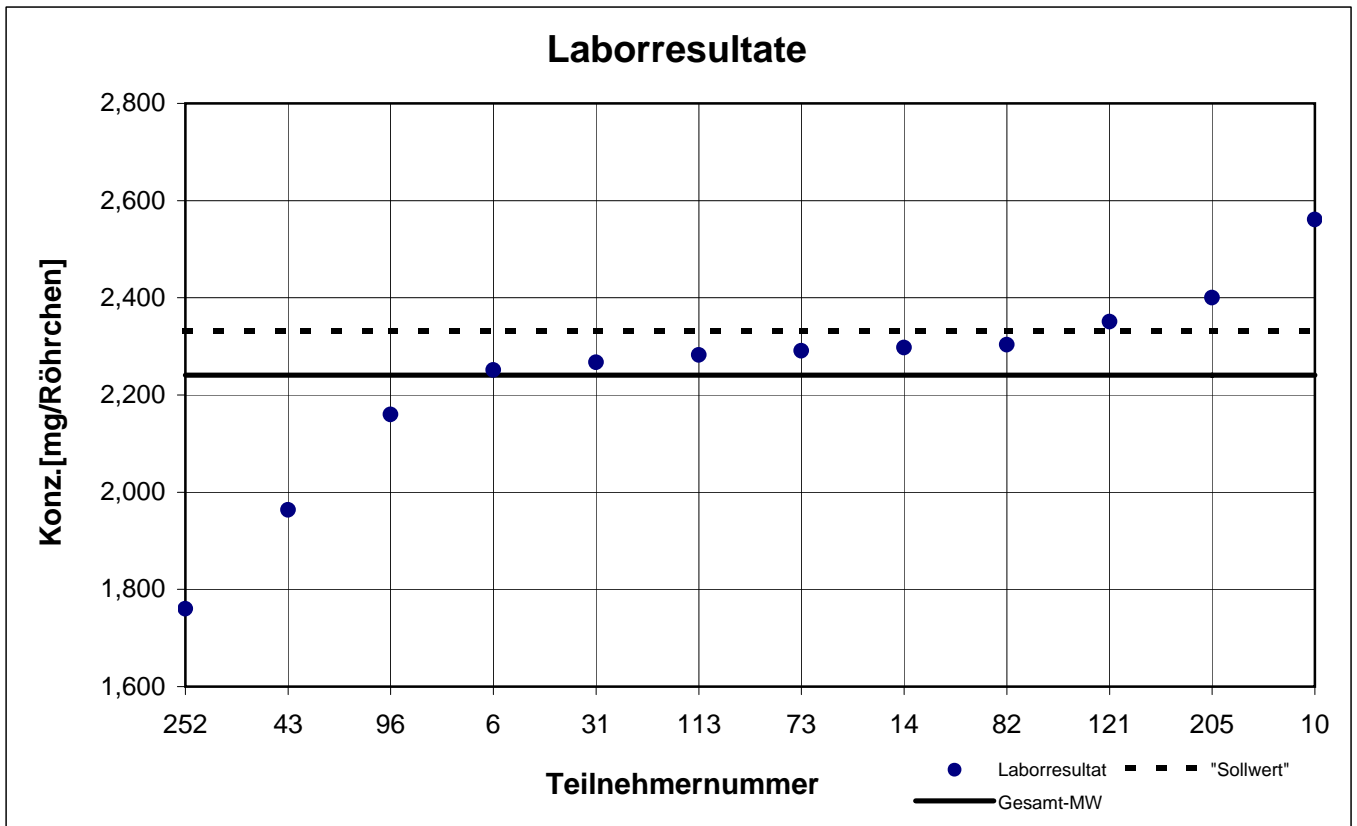
participant number	n-hexane		toluene		trichlorethene	
	result [mg/tube]	z - score	result [mg/tube]	z - score	result [mg/tube]	z - score
6	2,252	0,1	0,605	1,1	1,049	0,6
10	2,561	1,6	0,631	1,5	1,246	2,3
14	2,297	0,3	0,548	0,0	1,001	1,3
25	k.A.	k.A.	0,523	0,4	k.A.	k.A.
31	2,267	0,1	0,554	0,1	1,083	0,1
43	1,963	1,3	0,566	0,4	1,056	0,5
73	2,291	0,2	0,545	0,0	1,060	0,5
82	2,304	0,3	0,624	1,4	1,112	0,3
96	2,160	0,4	0,571	0,5	1,052	0,6
113	2,282	0,2	0,472	1,4	1,750	9,6
121	2,351	0,5	0,631	1,5	1,156	0,9
173	k.A.	k.A.	0,390	2,9	0,720	5,4
205	2,400	0,8	0,570	0,4	1,100	0,1
252	1,760	2,3	0,420	2,3	k.A.	k.A.

 marked fields are outliers!

	n-hexane	toluene	trichlor-ethene
mean c_k [mg / tube]	2,241	0,546	1,091
standard deviation S_k [mg / tube]	0,2060	0,0742	0,0686
relative standard deviation [%]	9,19	13,60	6,29

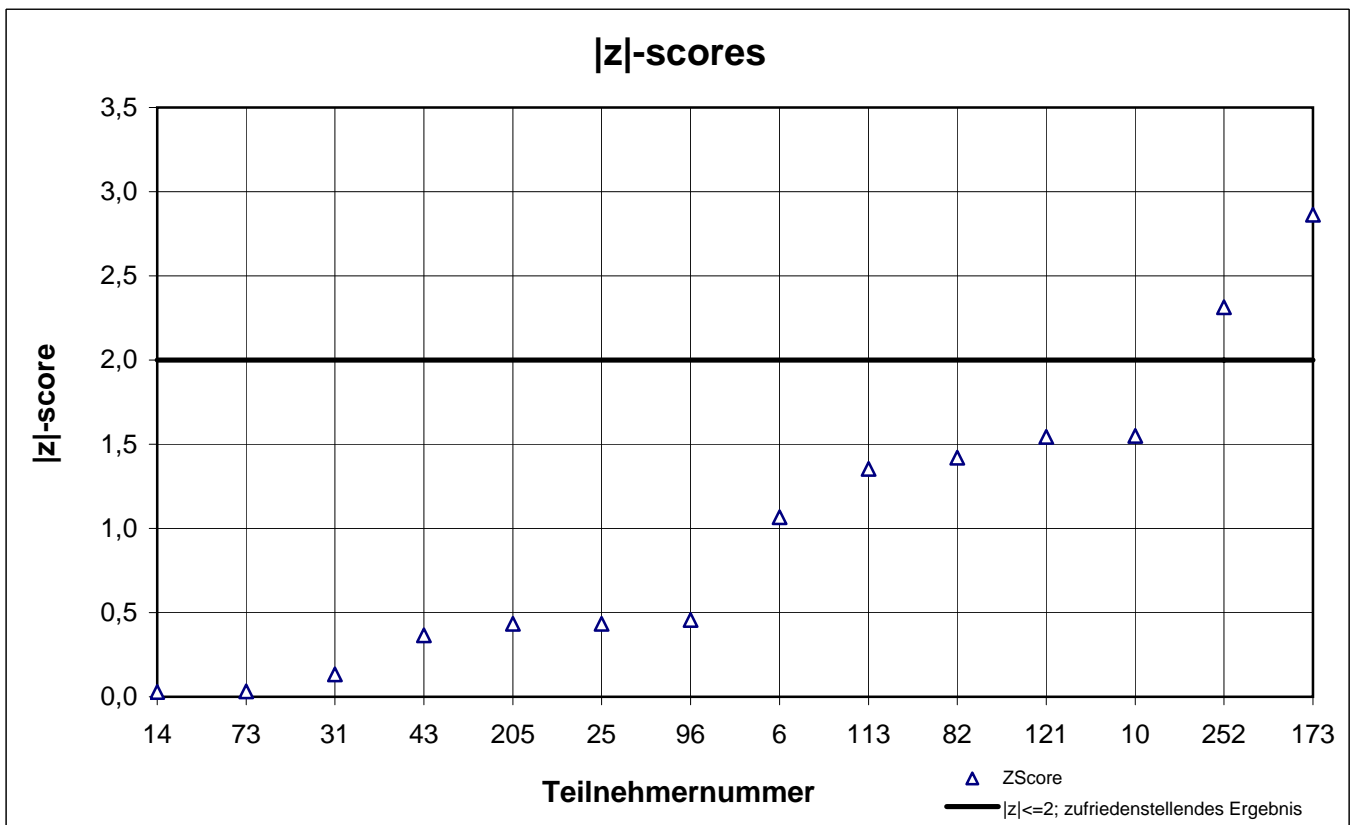
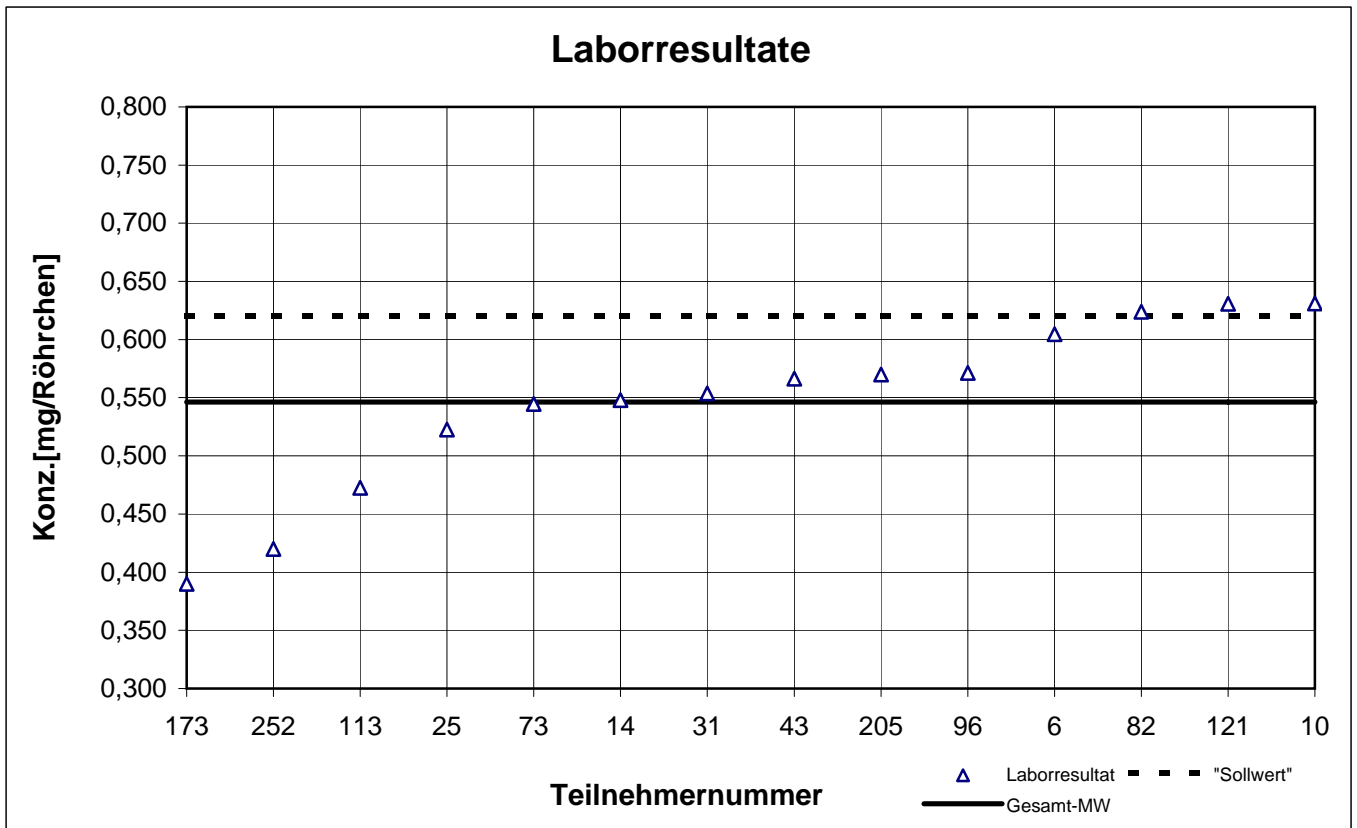
Typ-B -Probe 3

n-Hexan



Typ-B -Probe 3

Toluol



Typ-B -Probe 3

Trichlorethen

