

sample 1 - results (part 1)

participant number	1-butanol		butyl acetate		ethylbenzene	
	result (µg / tube)	z - score	result (µg / tube)	z - score	result (µg / tube)	z - score
24*	12,40	1,5	18,50	0,6	10,10	0,6
35*	13,00	1,0	18,00	1,0	10,00	0,8
40*	k.A.	k.A.	18,20	0,8	10,00	0,8
41*	13,81	0,5	18,46	0,6	6,52	4,6
49	14,00	0,4	20,00	0,6	12,00	1,5
50	15,10	0,4	21,20	1,6	11,10	0,5
68	17,40	2,0	27,38	6,5	11,17	0,5
100*	10,00	3,1	35,30	12,7	11,00	0,4
135	18,93	3,0	25,01	4,6	14,07	3,8
155*	14,90	0,3	17,90	1,0	10,00	0,8
167	k.A.	k.A.	24,00	3,8	14,00	3,7
171	15,40	0,6	18,40	0,6	10,00	0,8
172*	14,00	0,4	20,00	0,6	12,00	1,5
173	k.A.	k.A.	k.A.	k.A.	8,70	2,2
194	k.A.	k.A.	k.A.	k.A.	k.A.	k.A.
212	15,75	0,8	19,85	0,5	10,55	0,1
213	15,97	1,0	19,49	0,2	11,92	1,4
237	k.A.	k.A.	k.A.	k.A.	k.A.	k.A.
240*	12,97	1,1	22,12	2,3	10,48	0,2
245*	14,40	0,1	17,70	1,2	10,00	0,8
267	15,50	0,7	19,00	0,2	11,00	0,4
269*	13,36	0,8	19,22	0,0	11,49	0,9

* on site sampling

	Toluene-equivalent (µg / tube)		Toluene-equivalent (µg / tube)		Toluene-equivalent (µg / tube)	
24	6,330		12,20		10,90	
50	4,700		11,90		12,70	
100	5,200		8,200		12,30	
155	0,000		8,000		11,00	
171	0,000		7,500		10,30	
194	9,000		16,00		16,00	
213	9,340		12,94		15,25	
237	5,200		11,90		9,200	

marked  fields are outliers

	1-butanol	butyl acetate	ethyl-benzene
mean c_k [µg / m³]	14,52	19,20	10,68
standard deviation S_k [µg / m³]	2,025	1,265	0,898
rel. standard deviation [%]	13,94	6,59	8,41
Sollwert [µg / m³]	14,70	17,70	9,70
Mittelwert Kontrollproben [µg / m³]	14,20	19,30	11,30

sample 1 - results (part 2)

participant number	n-heptane		p-xylene		toluene	
	result ($\mu\text{g} / \text{tube}$)	z - score	result ($\mu\text{g} / \text{tube}$)	z - score	result ($\mu\text{g} / \text{tube}$)	z - score
24*	22,60	0,2	16,30	0,7	8,010	0,1
35*	19,00	1,7	16,00	0,9	8,000	0,1
40*	19,50	1,5	15,70	1,1	7,500	0,7
41*	17,82	2,3	9,59	5,5	15,87	9,5
49	21,00	0,9	19,00	1,2	9,000	1,1
50	30,30	3,2	16,80	0,3	8,400	0,4
68	27,04	1,7	0,25	12,2	18,81	13,1
100*	29,30	2,7	17,70	0,3	8,800	0,9
135	30,09	3,1	23,27	4,3	11,10	3,7
155*	19,30	1,6	16,00	0,9	7,700	0,5
167	25,00	0,9	20,00	2,0	k.A.	k.A.
171	20,70	1,0	16,00	0,9	8,800	0,9
172*	23,00	0,0	18,00	0,5	9,000	1,1
173	k.A.	k.A.	16,97	0,2	28,64	25,2
194	k.A.	k.A.	k.A.	k.A.	k.A.	k.A.
212	22,55	0,2	17,25	0,0	8,900	1,0
213	22,89	0,1	17,64	0,3	12,91	5,9
237	k.A.	k.A.	16,20	0,8	6,400	2,1
240*	24,38	0,6	20,42	2,3	7,540	0,7
245*	22,00	0,4	16,30	0,7	6,970	1,4
267	22,50	0,2	18,00	0,5	7,500	0,7
269*	18,47	2,0	16,56	0,5	8,870	1,0

* on site sampling

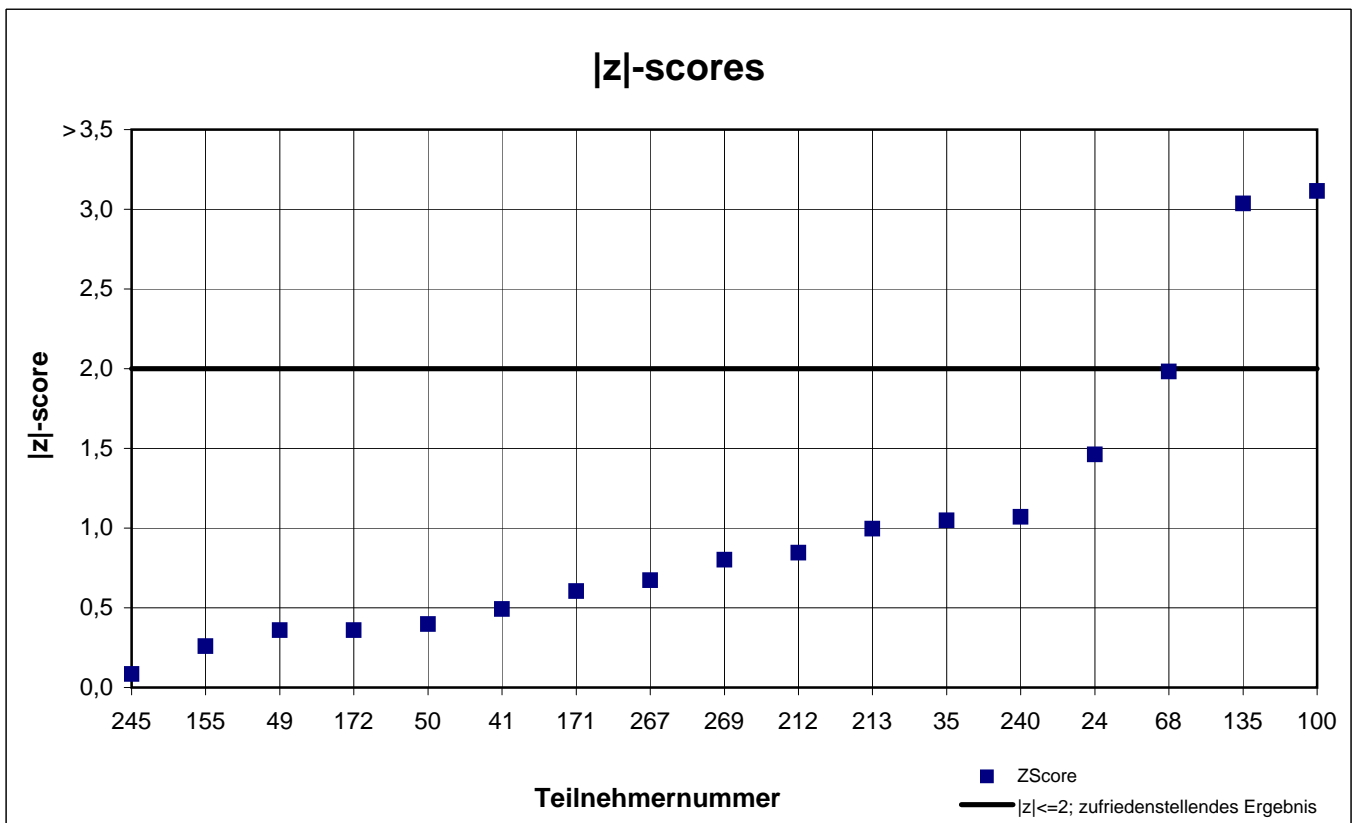
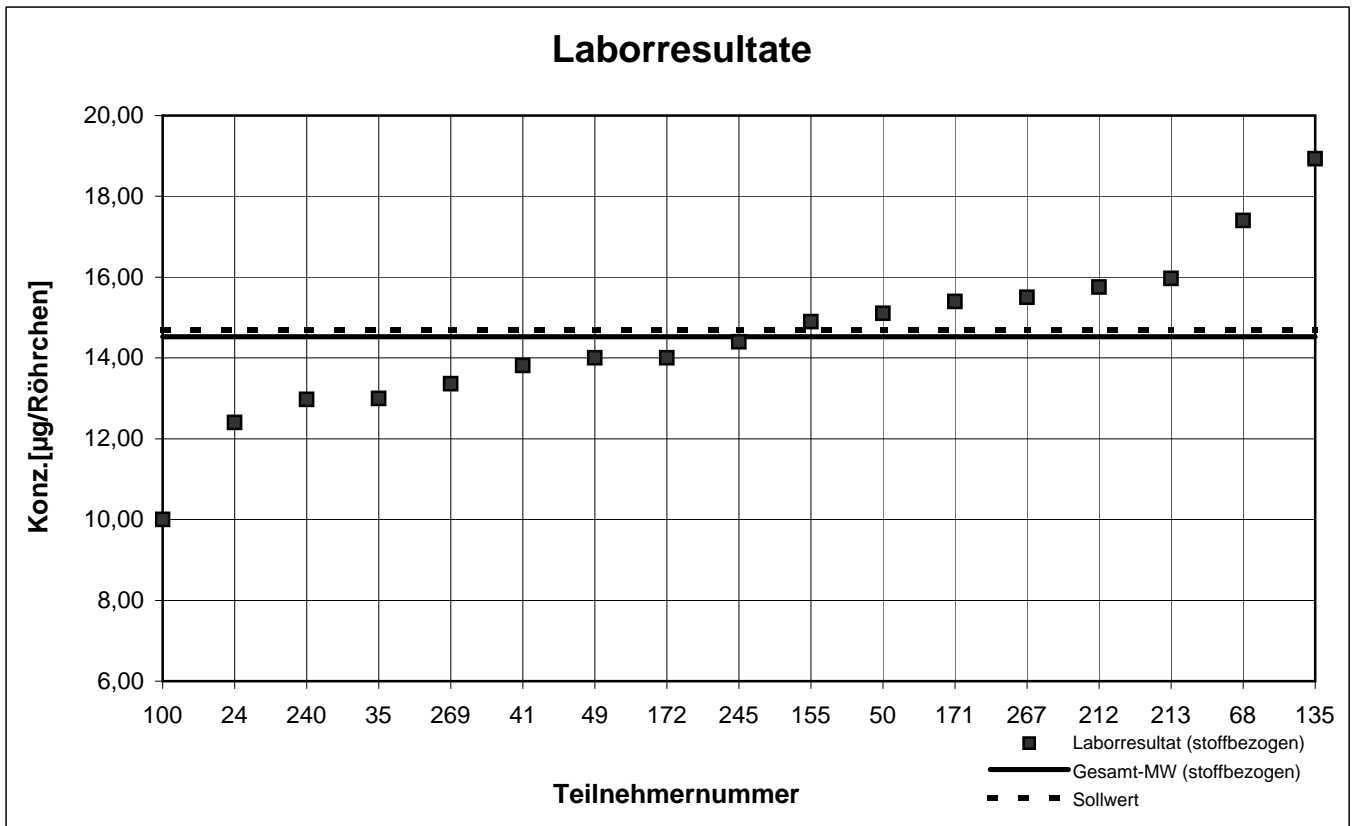
	Toluene-equivalent ($\mu\text{g} / \text{tube}$)		Toluene-equivalent ($\mu\text{g} / \text{tube}$)		
24	18,70		17,90		
50	16,50		20,30		
100	17,00		20,70		
155	11,50		18,20		
171	11,20		18,50		
194	34,00		25,00		
213	19,13		23,80		
237	19,70		k.A.		

marked  fields are outliers

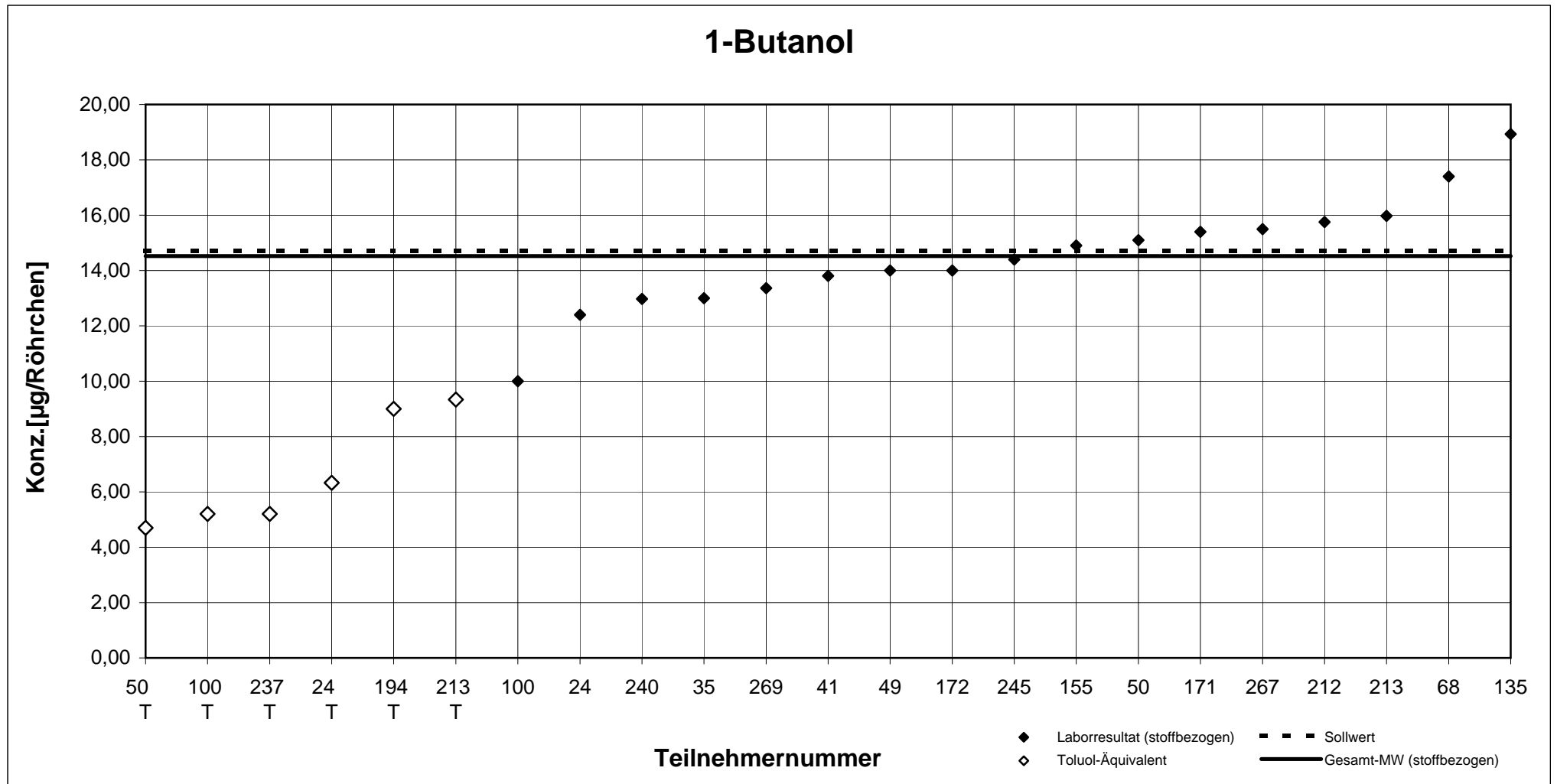
	n-heptane	p-xylene	toluene
mean c_k [$\mu\text{g} / \text{m}^3$]	23,02	17,27	8,093
standard deviation S_k [$\mu\text{g} / \text{m}^3$]	3,842	1,391	0,815
rel. standard deviation [%]	16,69	8,06	10,07
Sollwert [$\mu\text{g} / \text{m}^3$]	20,20	15,90	7,80
Mittelwert Kontrollproben [$\mu\text{g} / \text{m}^3$]	22,70	17,50	10,30

Probe 1

1-Butanol



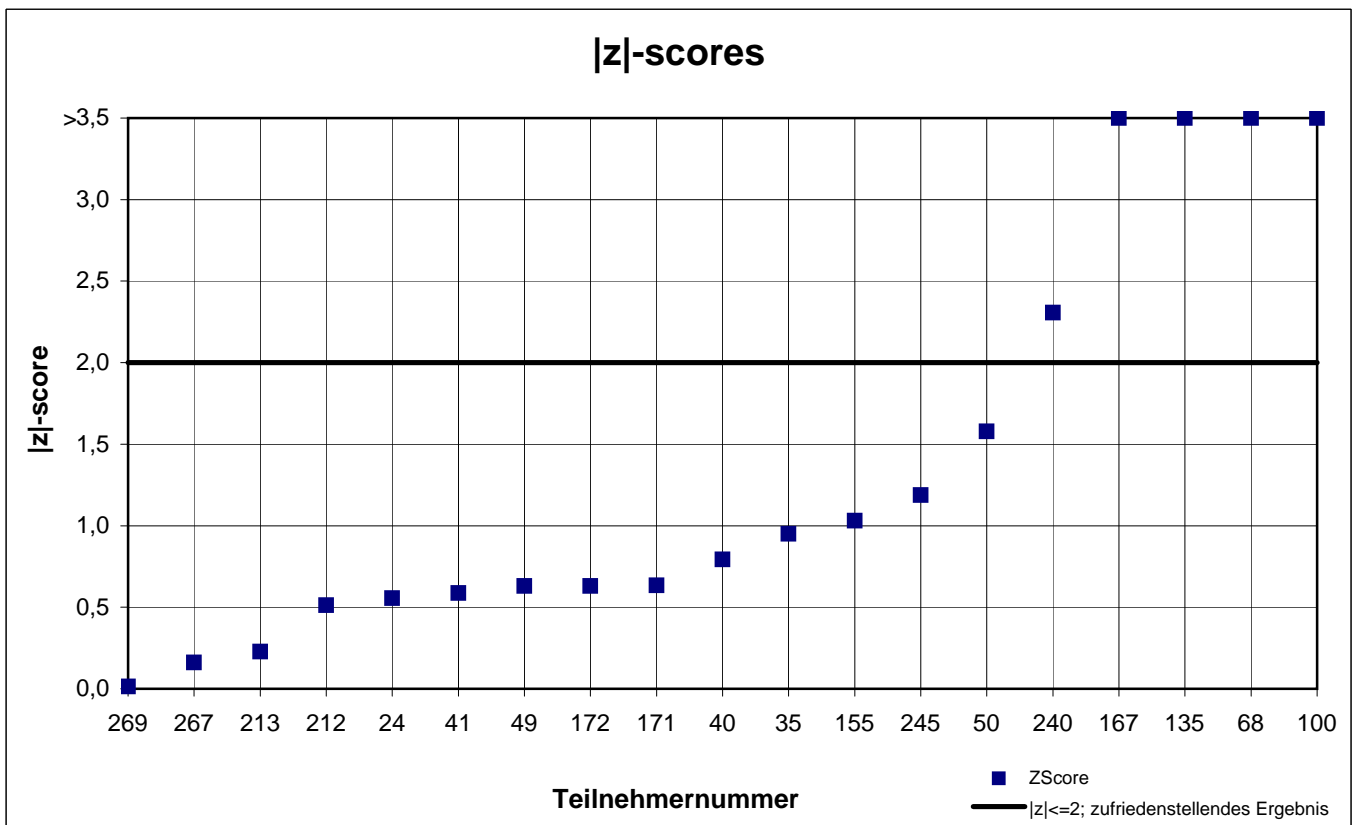
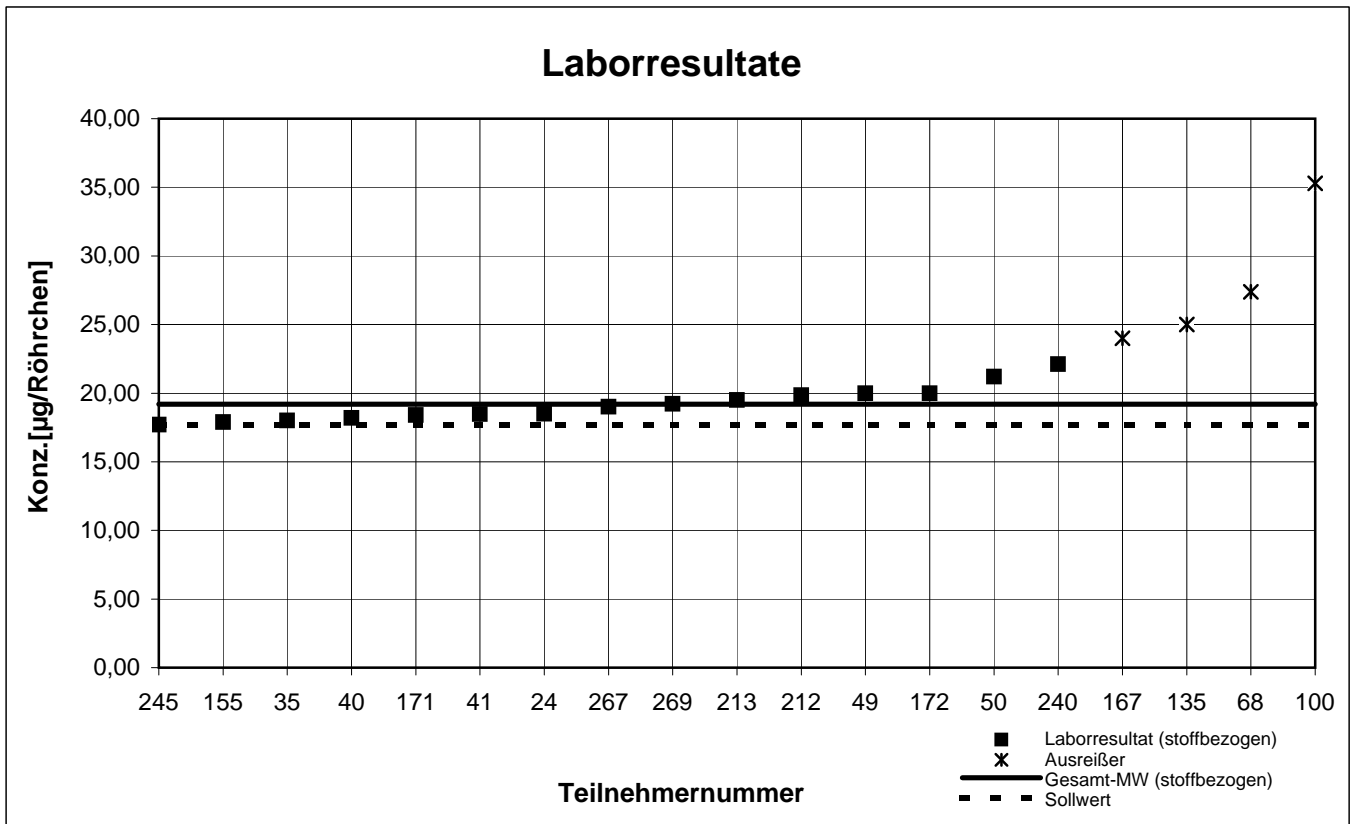
Probe 1 - Ergebnisse inkl. Toluol-Äquivalent



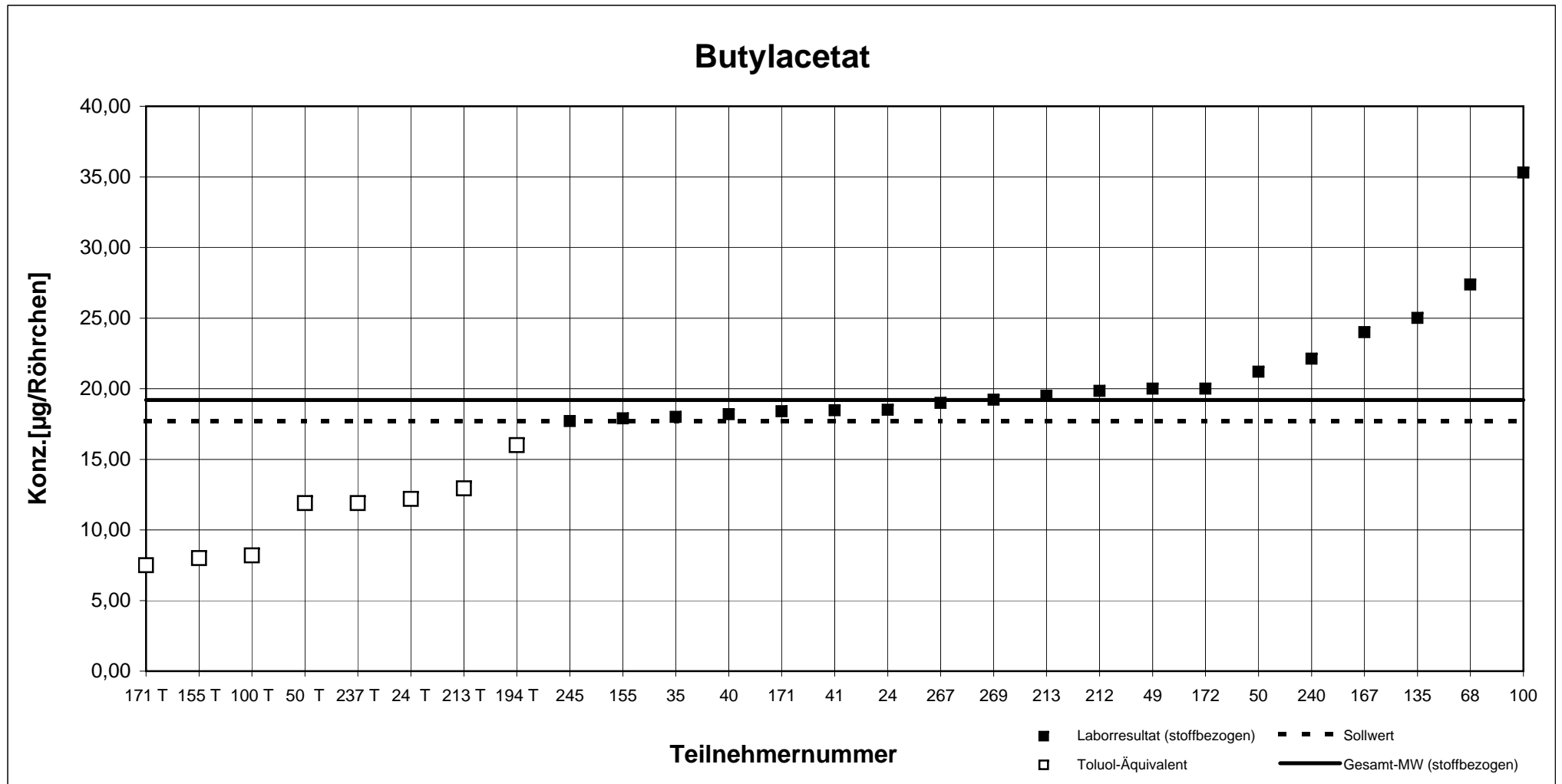
Teilnehmernummer + T = Ergebnis als Toluol-Äquivalent

Probe 1

Butylacetat



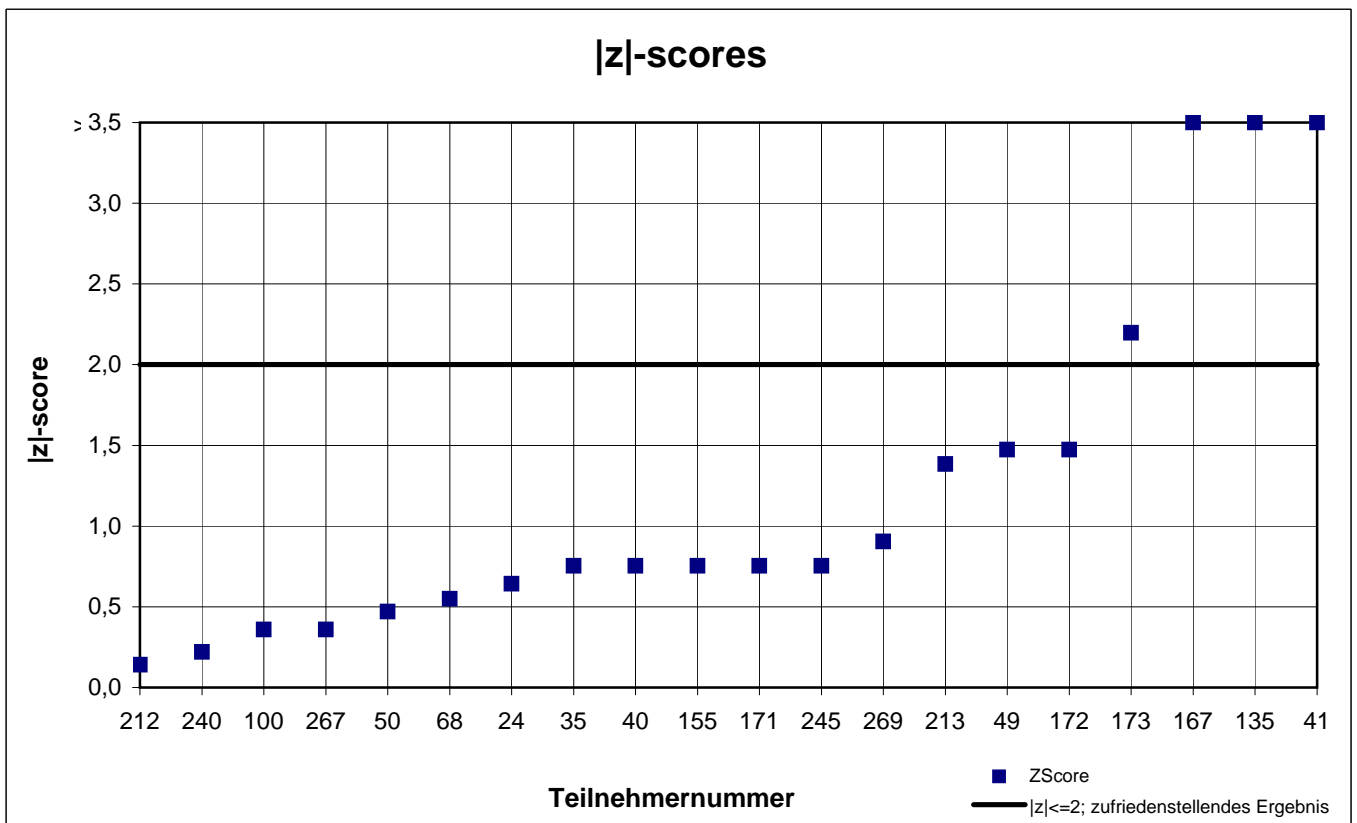
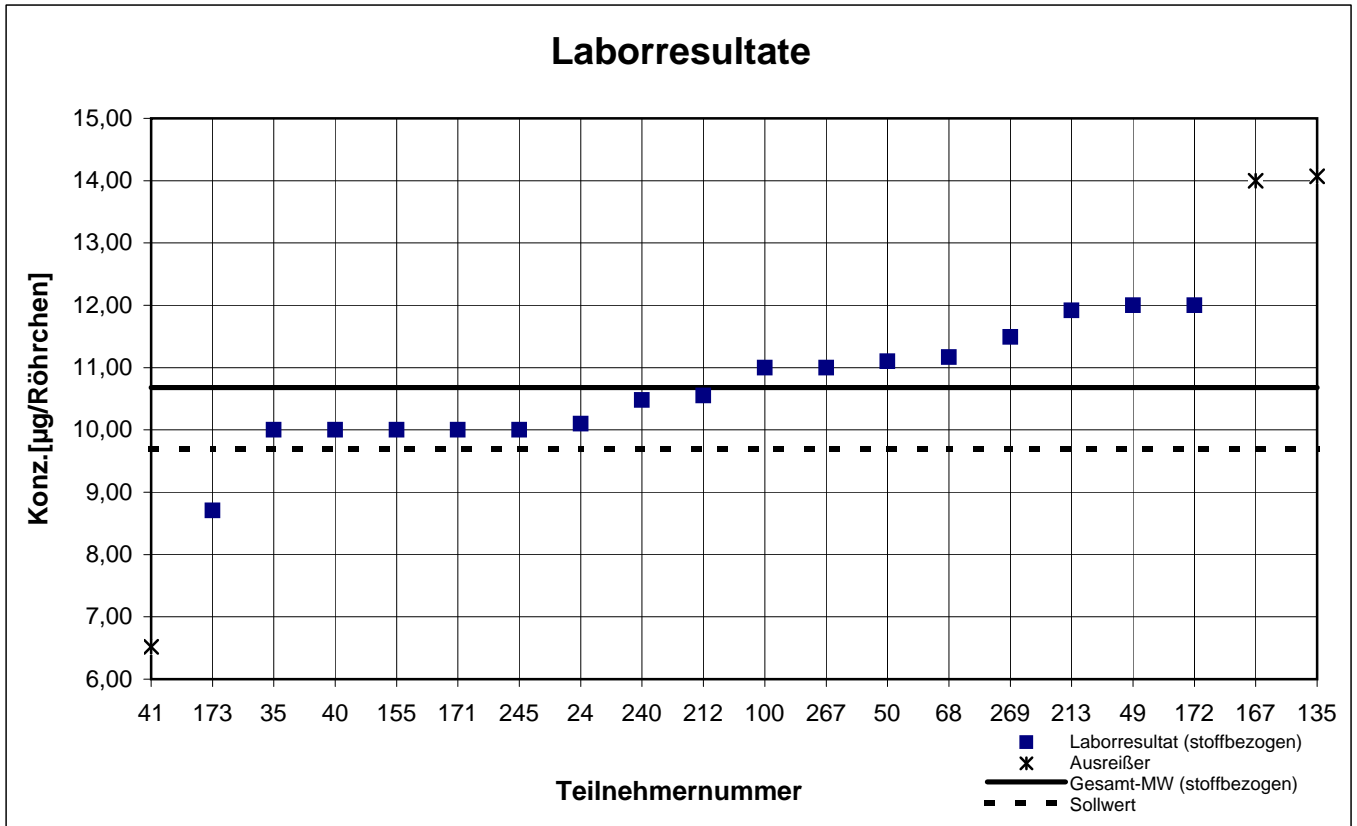
Probe 1 - Ergebnisse inkl. Toluol-Äquivalent



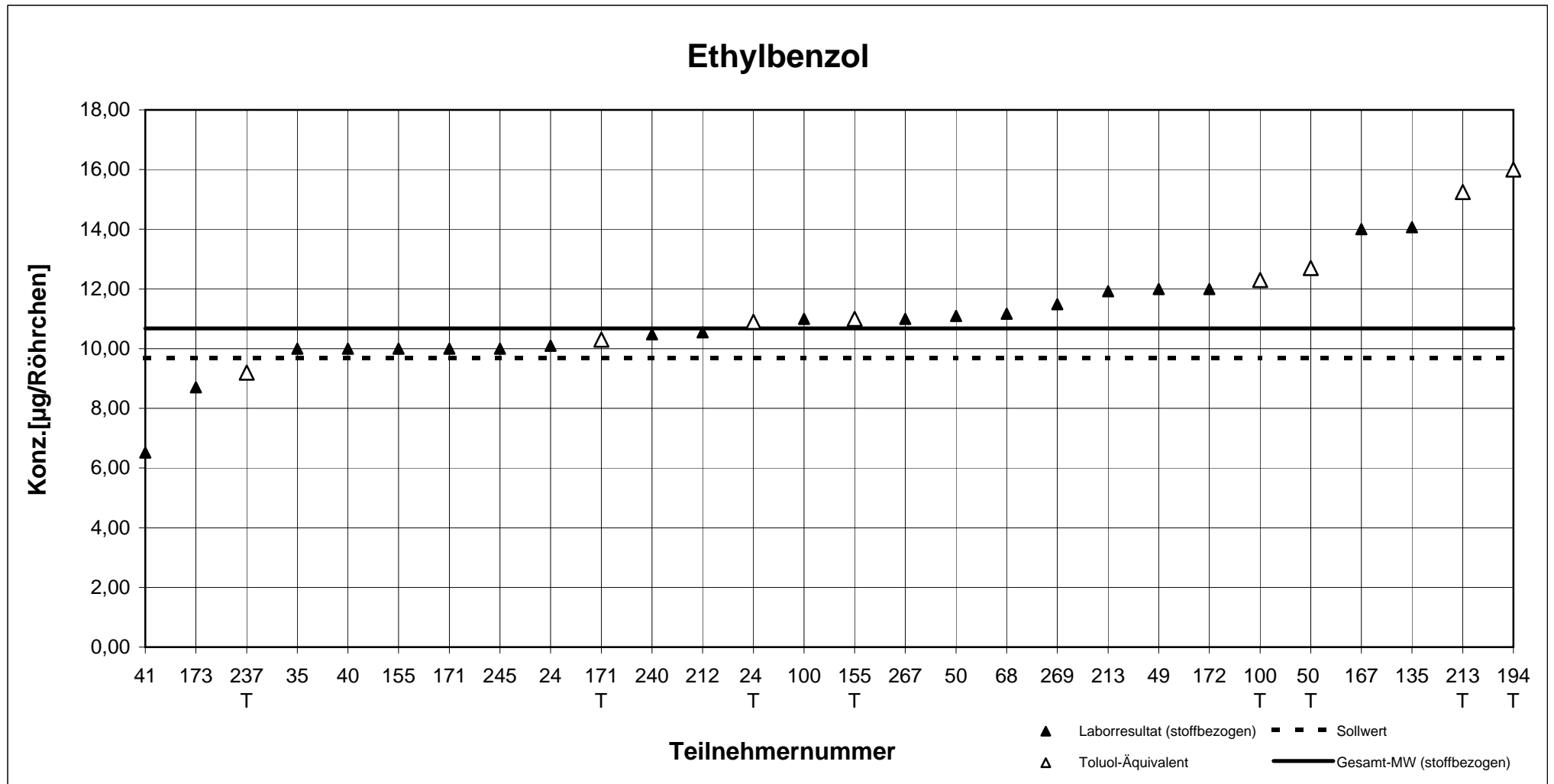
Teilnehmernummer + T = Ergebnis als Toluol-Äquivalent

Probe 1

Ethylbenzol



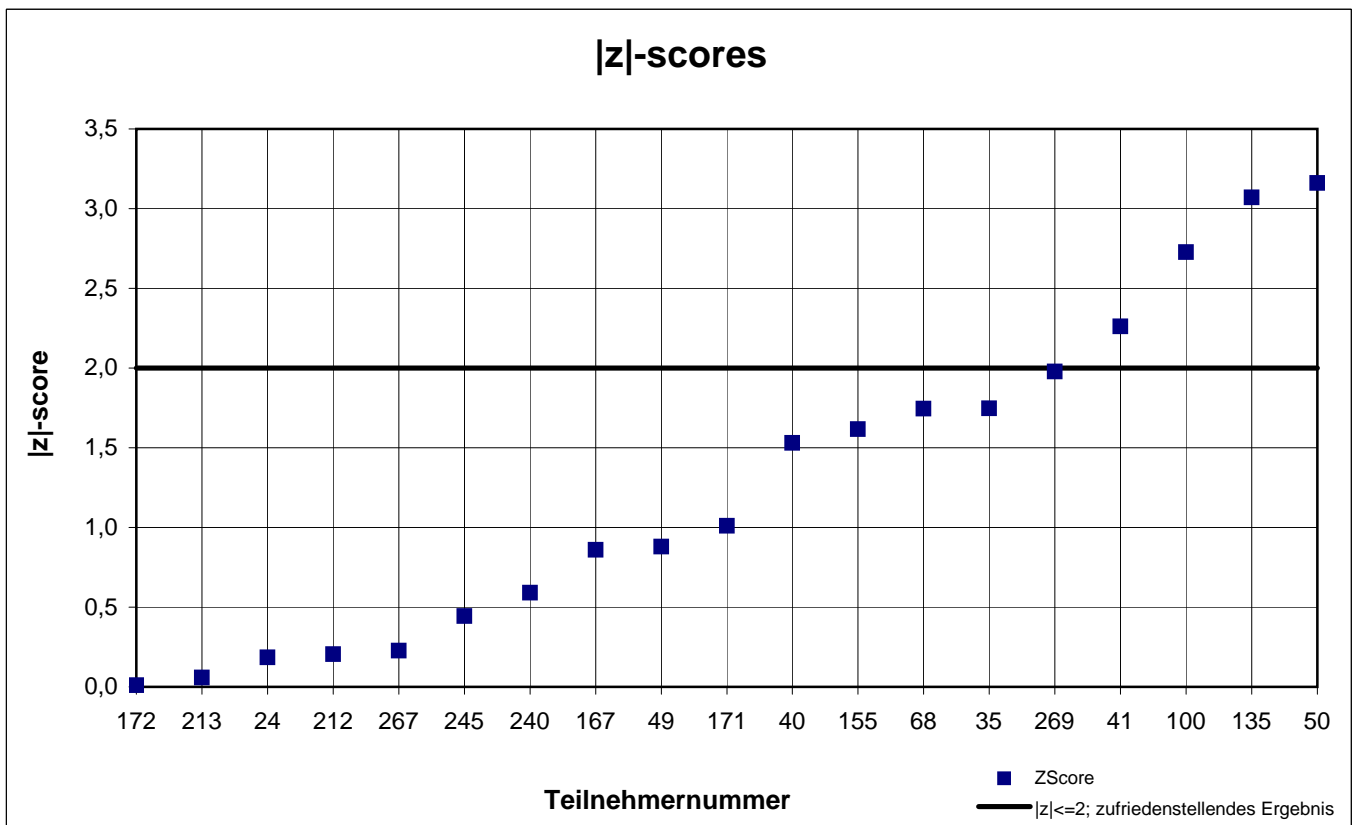
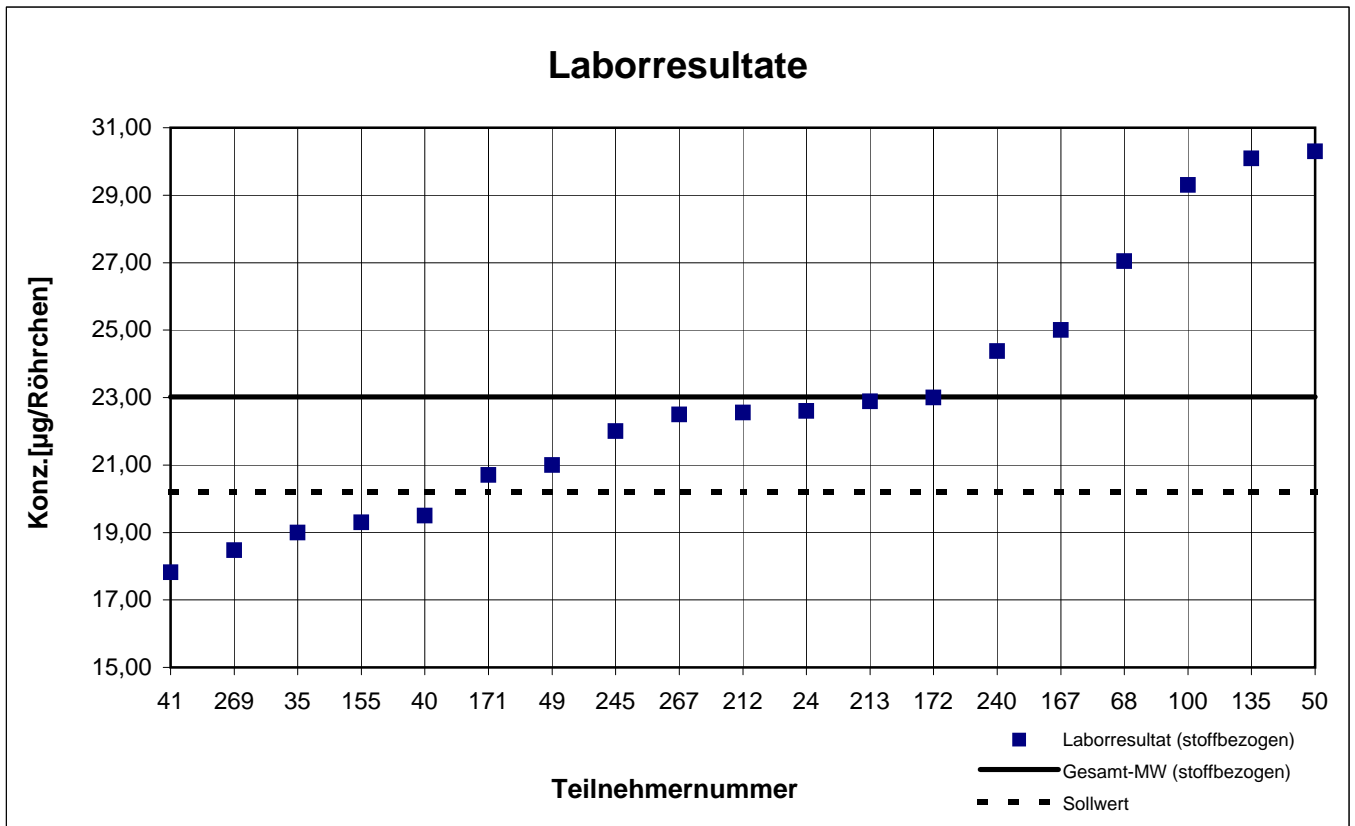
Probe 1 - Ergebnisse inkl. Toluol-Äquivalent



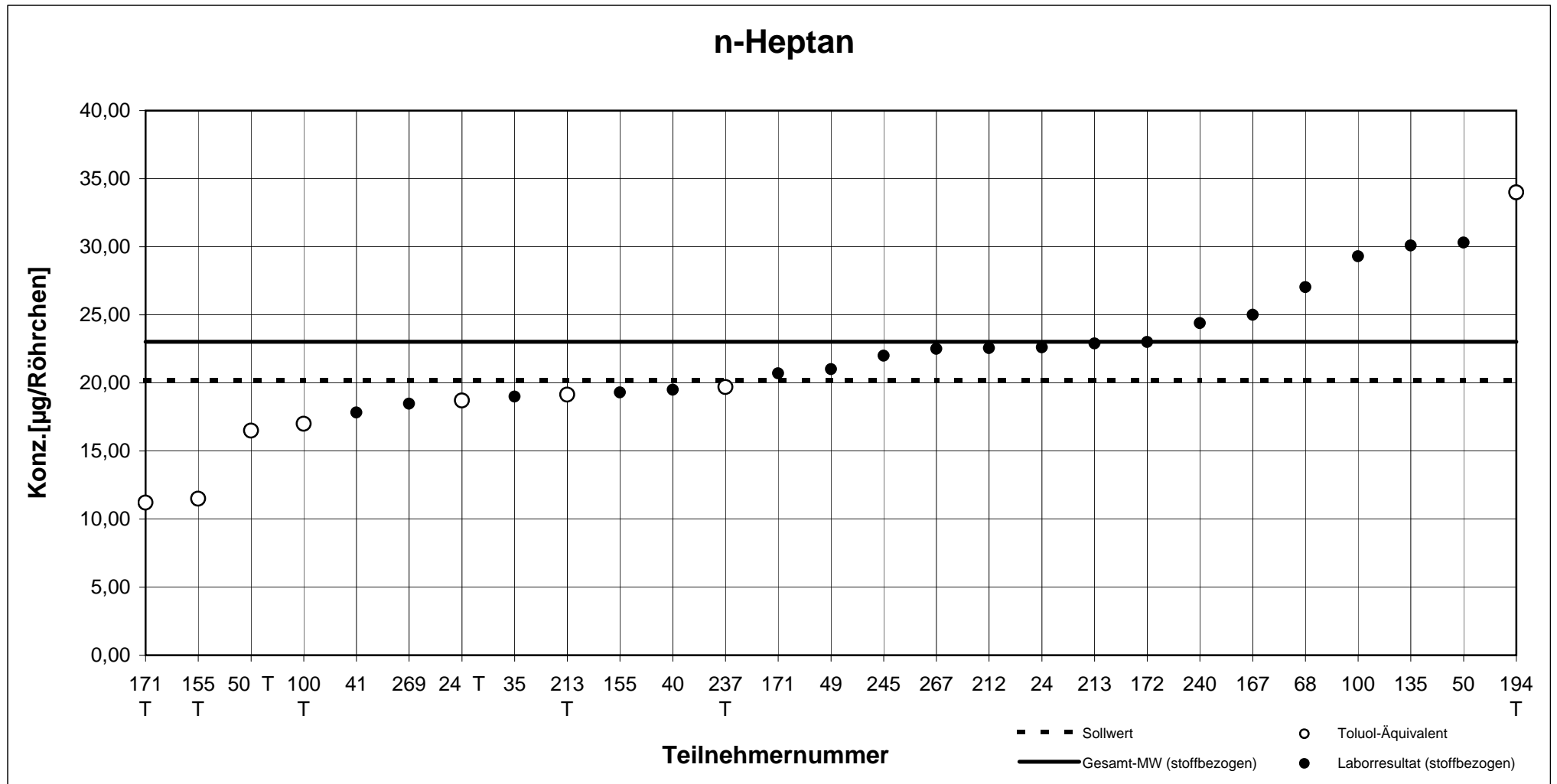
Teilnehmernummer + T = Ergebnis als Toluol-Äquivalent

Probe 1

n-Heptan



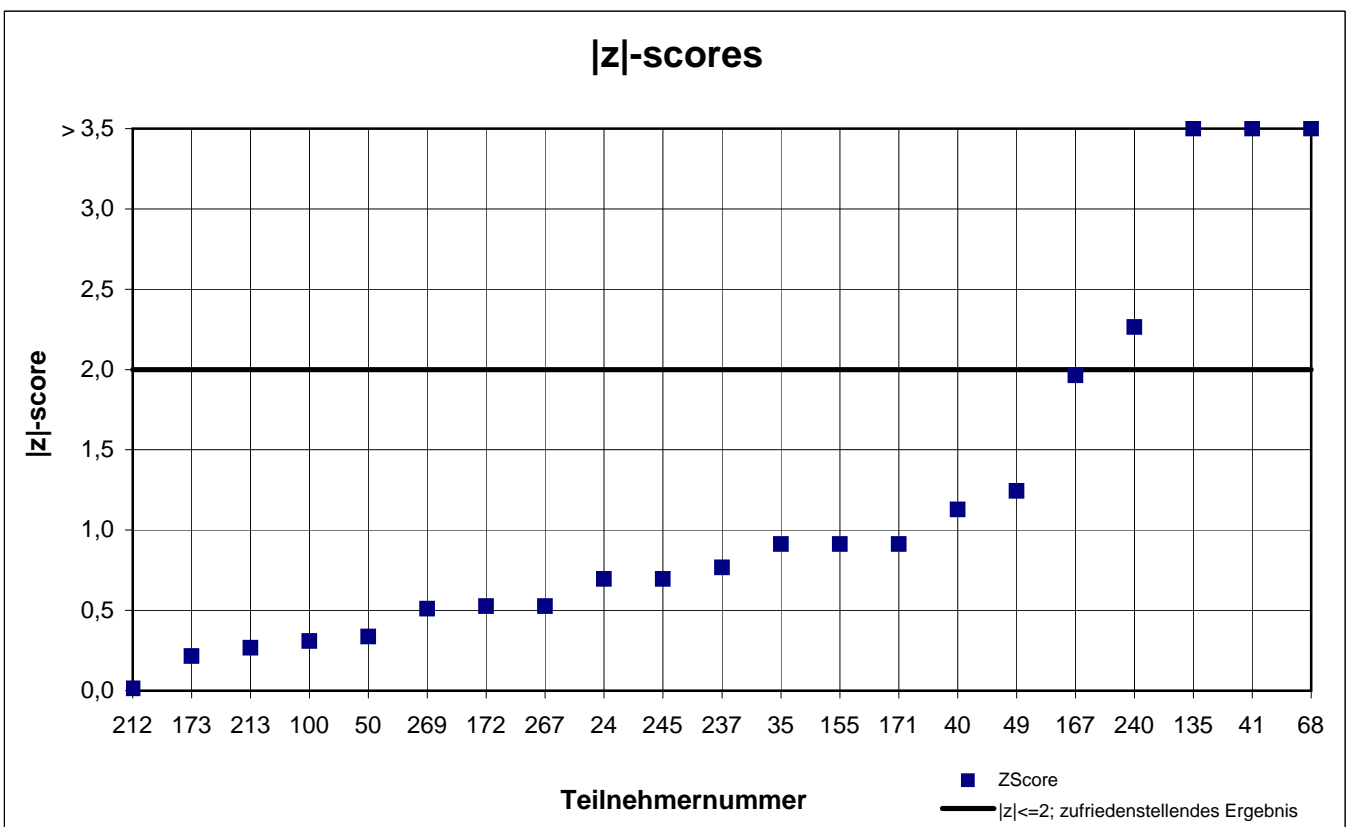
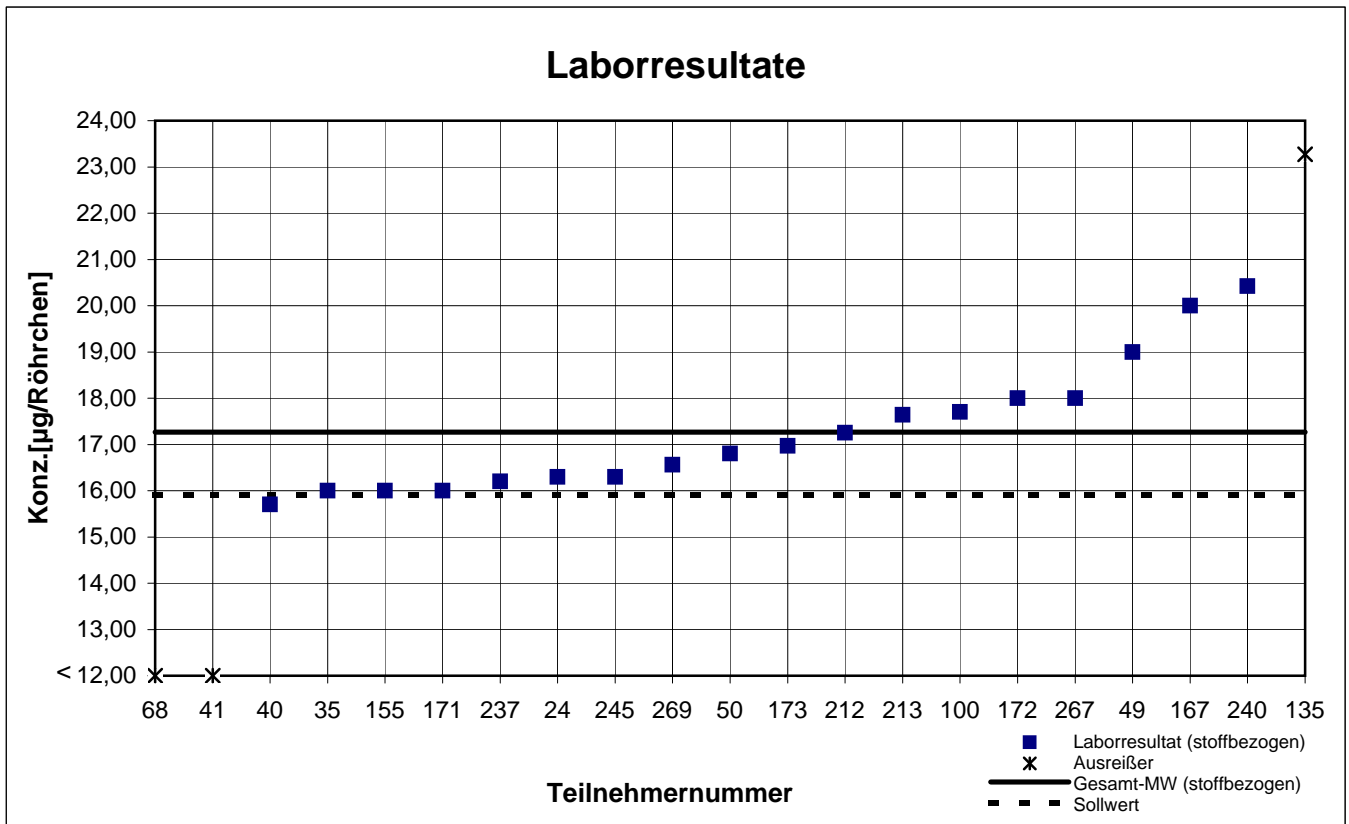
Probe 1 - Ergebnisse inkl. Toluol-Äquivalent



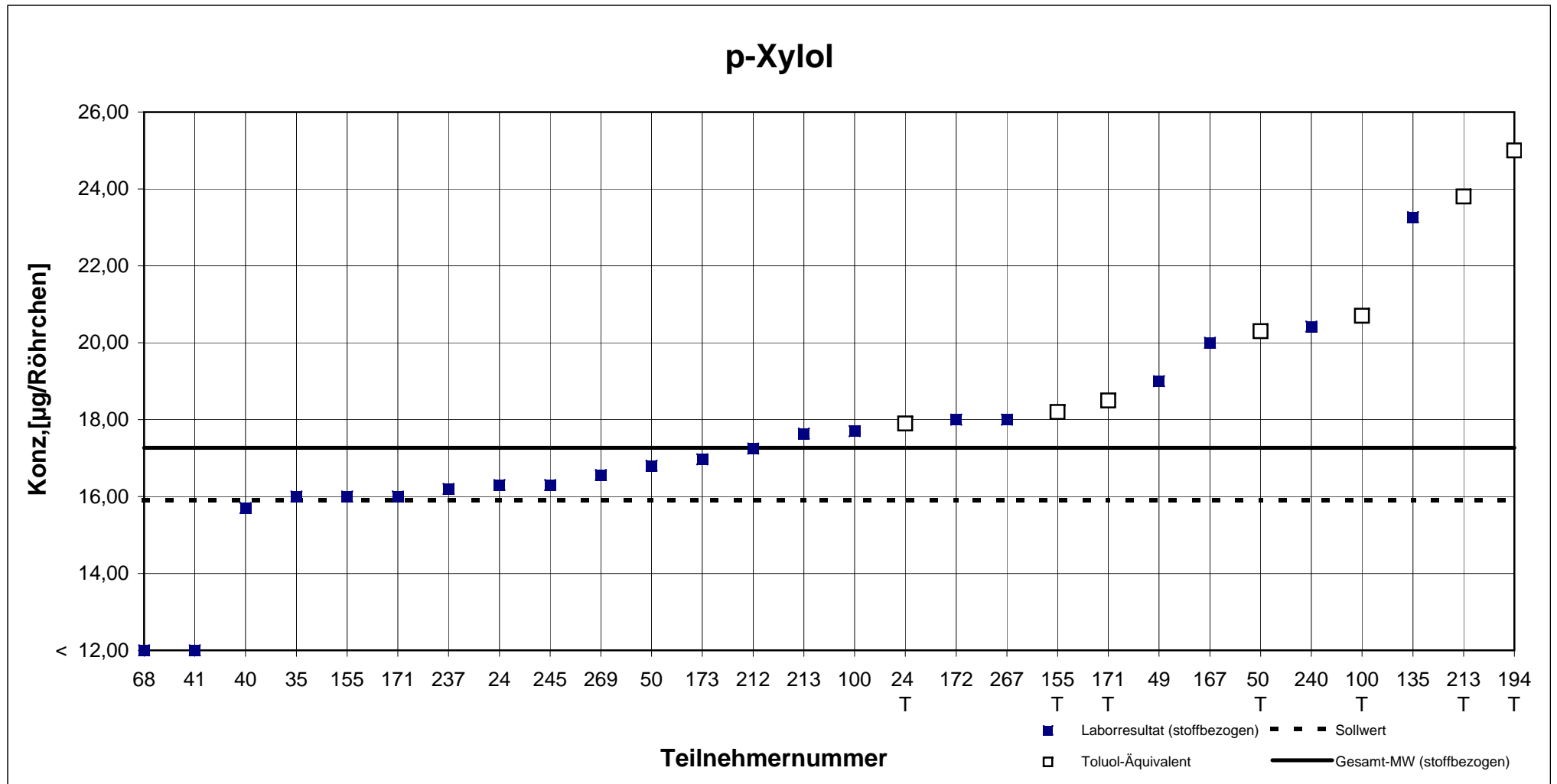
Teilnehmernummer + T = Ergebnis als Toluol-Äquivalent

Probe 1

p-Xylol



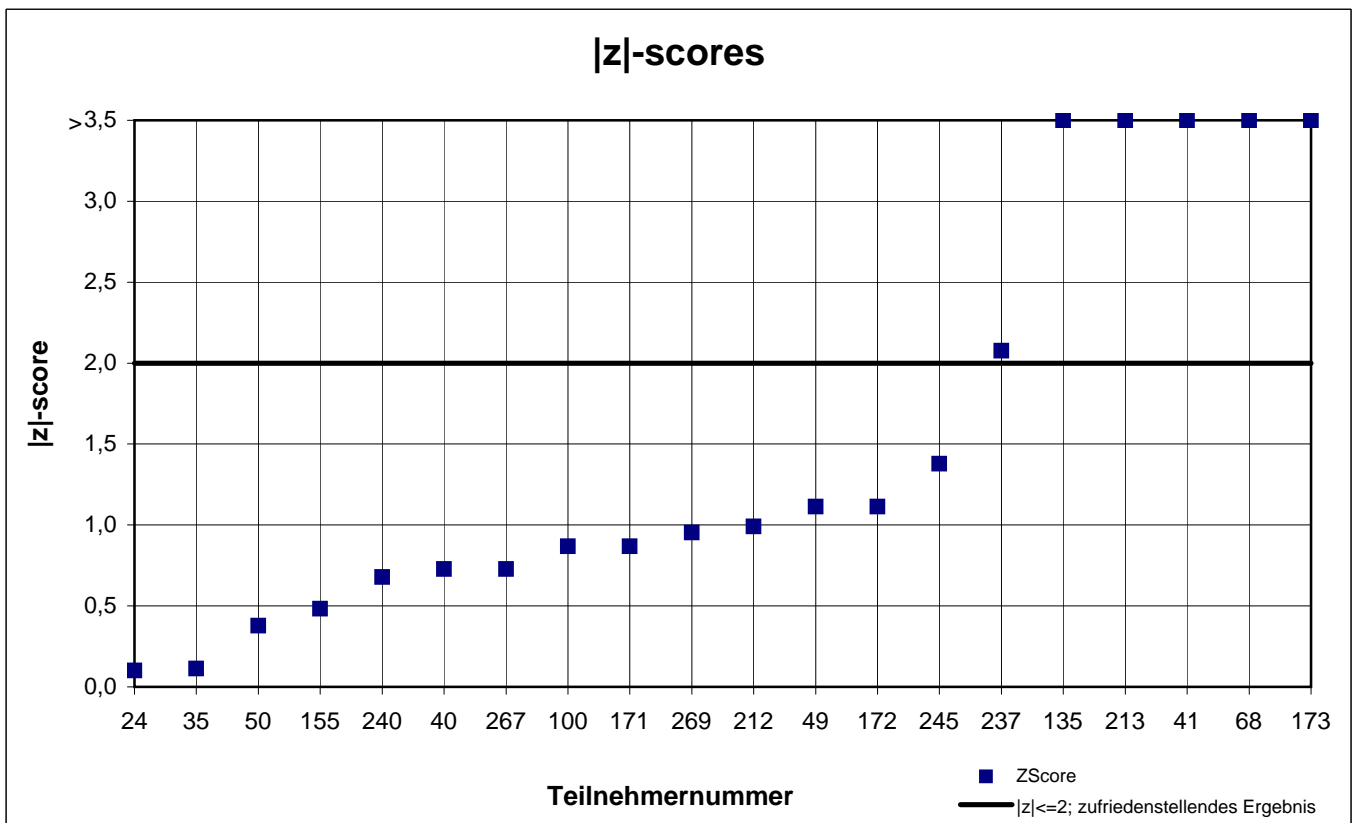
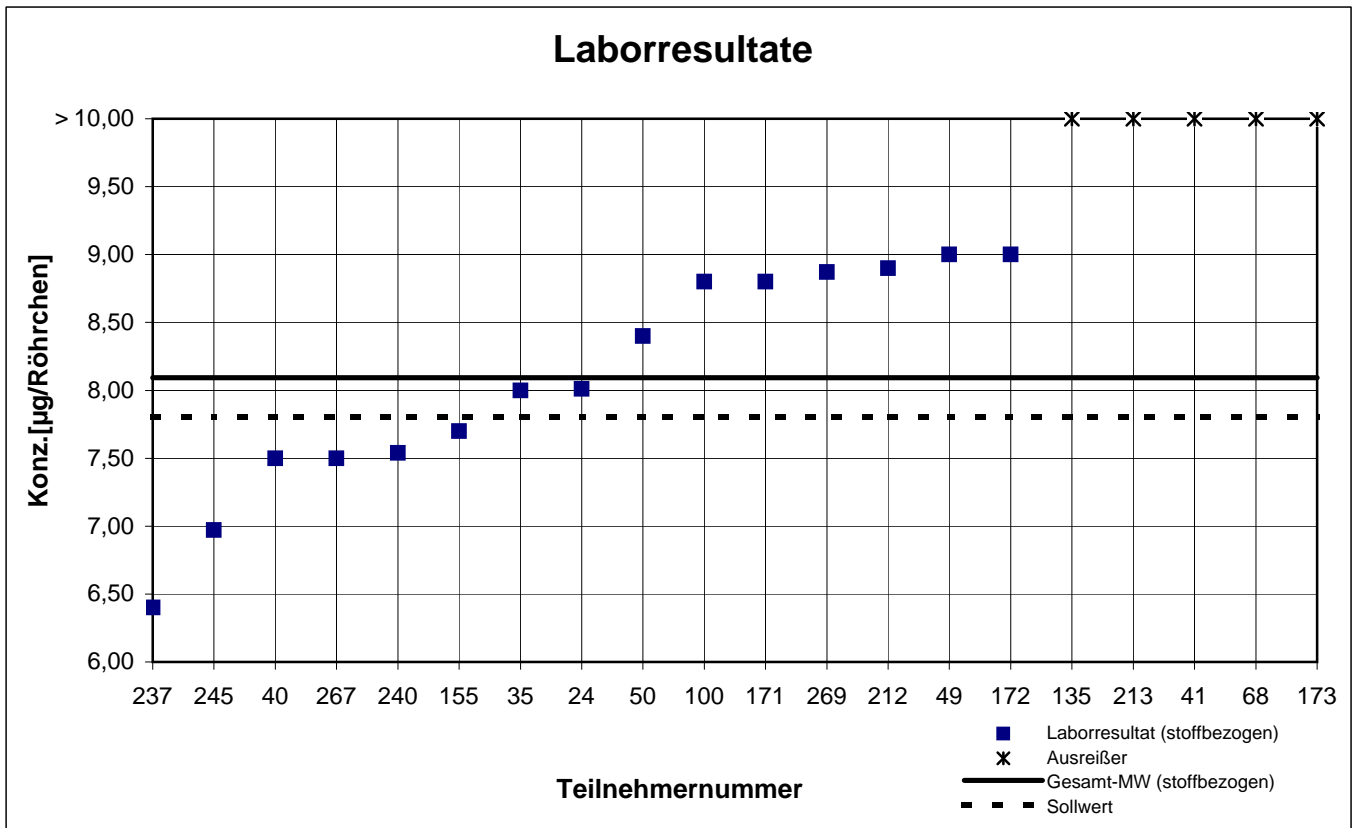
Probe 1 - Ergebnisse inkl. Toluol-Äquivalent



Teilnehmernummer + T = Ergebnis als Toluol-Äquivalent

Probe 1

Toluol



sample 2 - results (part 1)

participant number	1-butanol		butyl acetate		ethylbenzene	
	result (µg / tube)	z - score	result (µg / tube)	z - score	result (µg / tube)	z - score
24*	32,30	0,4	44,20	0,0	24,00	0,3
35*	27,00	2,0	35,00	2,1	20,00	1,9
40*	k.A.	k.A.	40,90	0,7	23,00	0,7
41*	28,91	1,4	37,34	1,5	13,86	4,3
49	39,00	1,5	48,00	0,9	29,00	1,6
50	36,50	0,8	48,90	1,1	26,50	0,6
68	40,38	2,0	48,50	1,0	25,20	0,1
100*	26,00	2,3	79,70	8,1	24,70	0,1
135	37,20	1,0	50,22	1,4	26,68	0,7
155*	34,20	0,1	43,90	0,0	24,80	0,0
167	k.A.	k.A.	53,00	2,0	30,00	2,0
171	34,70	0,3	45,30	0,3	24,80	0,0
172*	35,00	0,4	46,00	0,4	26,00	0,4
173	k.A.	k.A.	k.A.	k.A.	20,86	1,6
194	k.A.	k.A.	k.A.	k.A.	k.A.	k.A.
212	36,20	0,7	46,05	0,4	24,35	0,2
213	35,58	0,5	30,90	3,0	23,97	0,4
237	k.A.	k.A.	k.A.	k.A.	k.A.	k.A.
240*	34,15	0,1	53,06	2,0	25,90	0,4
245*	30,10	1,1	35,30	2,0	20,50	1,7
267	36,50	0,8	44,50	0,1	26,50	0,6
269*	30,68	0,9	42,16	0,4	26,15	0,5

* on site sampling

	Toluol-äquivalent (µg / Röhrchen)		Toluene-äquivalent (µg / tube)		Toluene-äquivalent (µg / tube)	
24	15,70		29,10		26,00	
50	11,60		26,20		28,60	
100	15,30		22,30		28,30	
155	k.A.		19,10		26,90	
171	k.A.		18,50		25,60	
194	28,00		37,00		39,00	
213	17,09		20,22		31,00	
237	14,50		28,90		23,00	

marked fields are outliers

	1-butanol	butyl acetate	ethylbenzene
mean c_k [µg / m³]	33,79	44,07	24,89
standard deviation S_k [µg / m³]	4,067	6,220	2,585
rel. standard deviation [%]	12,04	14,12	10,39
Sollwert [µg / m³]	34,30	41,30	22,70
Mittelwert Kontrollproben [µg / m³]	34,60	44,90	26,20

sample 2 - results (part 2)

participant number	n-heptane		p-xylene		toluene	
	result (µg / tube)	z - score	result (µg / tube)	z - score	result (µg / tube)	z - score
24*	52,80	0,2	38,10	0,5	19,20	0,1
35*	41,00	2,4	33,00	1,7	16,00	1,6
40*	45,60	1,5	35,60	1,1	17,70	0,7
41*	31,92	4,1	17,84	5,4	28,66	5,1
49	62,00	1,5	44,00	1,0	21,00	1,1
50	68,60	2,8	41,00	0,2	20,60	0,9
68	60,32	1,2	-0,07		12,29	3,5
100*	82,30	5,3	39,70	0,1	20,30	0,7
135	58,74	0,9	44,10	1,0	20,84	1,0
155*	47,20	1,2	39,00	0,2	19,00	0,0
167	55,00	0,2	49,00	2,2	k.A.	k.A.
171	50,30	0,6	39,40	0,1	20,50	0,8
172*	54,00	0,1	41,00	0,2	24,00	2,7
173	k.A.	k.A.	41,87	0,5	19,92	0,5
194	k.A.	k.A.	k.A.	k.A.	k.A.	k.A.
212	53,05	0,1	39,15	0,2	19,40	0,2
213	57,56	0,7	40,04	0,0	18,37	0,3
237	k.A.	k.A.	39,50	0,1	20,10	0,6
240*	58,52	0,9	44,93	1,2	15,82	1,7
245*	49,00	0,9	33,20	1,7	15,10	2,0
267	57,00	0,6	43,00	0,7	19,50	0,3
269*	42,41	2,1	34,47	1,3	20,35	0,7

* on site sampling

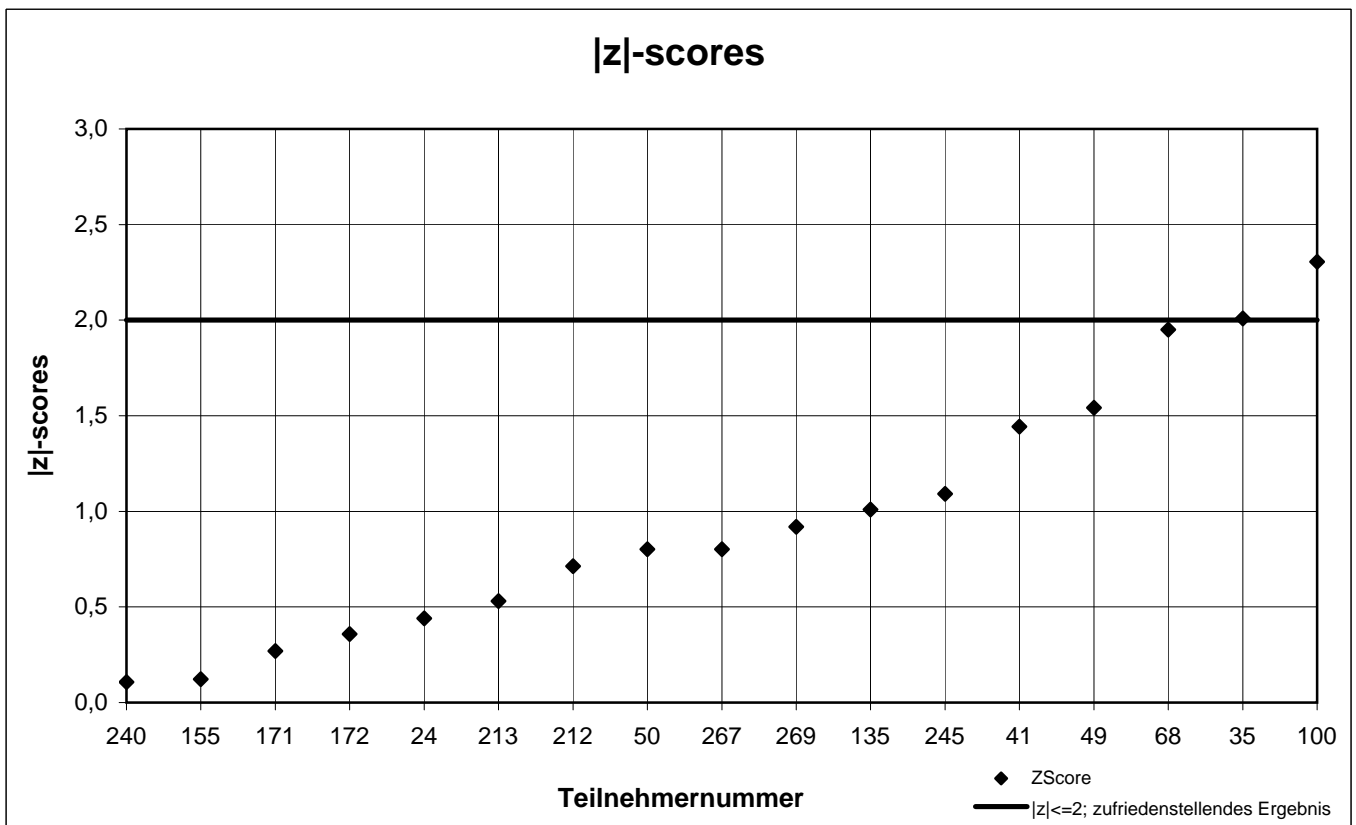
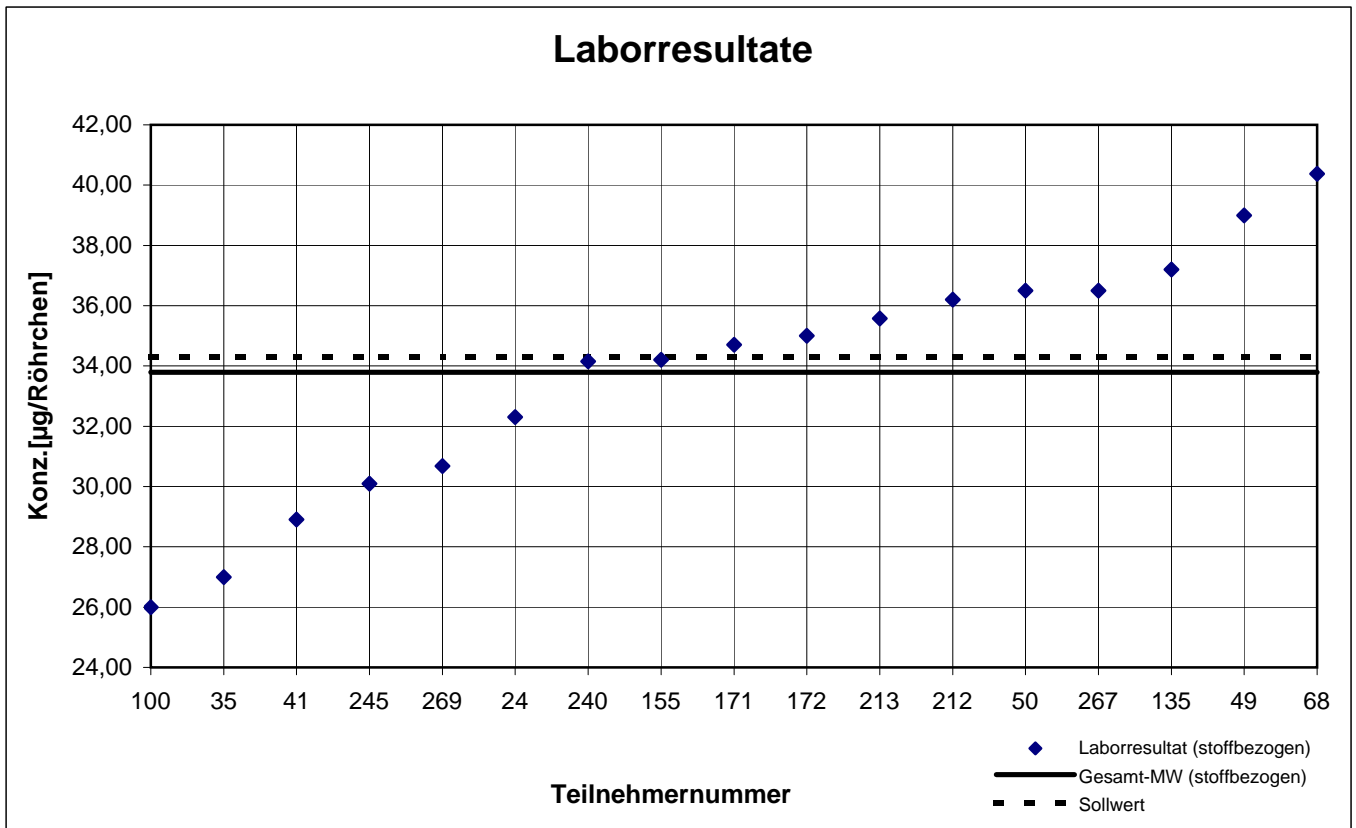
	Toluene-equivalent (µg / tube)		Toluene-equivalent (µg / tube)		Toluene-equivalent (µg / tube)	
24	43,70		41,70			
50	35,60		46,30			
100	39,00		46,70			
155	27,20		43,70			
171	27,00		42,20			
194	78,00		65,00			
213	45,60		52,51			
237	47,90		k.A.			

marked fields are outliers

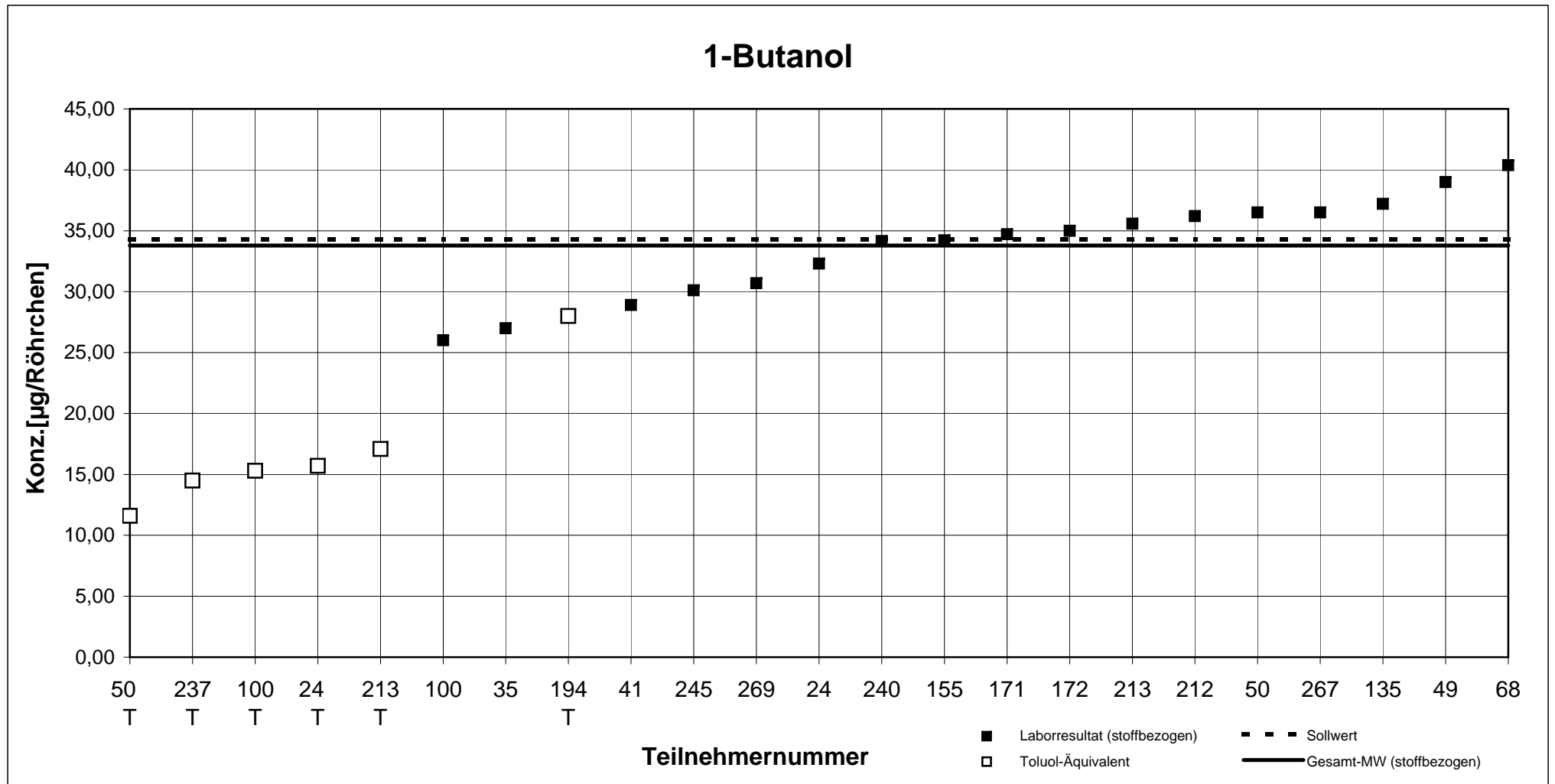
	n-heptane	p-xylene	toluene
mean c_k [µg / m³]	53,71	40,00	18,95
standard deviation S_k [µg / m³]	7,256	4,108	2,631
rel. standard deviation [%]	13,51	10,27	13,89
Sollwert [µg / m³]	47,10	37,20	18,20
Mittelwert Kontrollproben [µg / m³]	52,10	40,90	21,90

Probe 2

1-Butanol



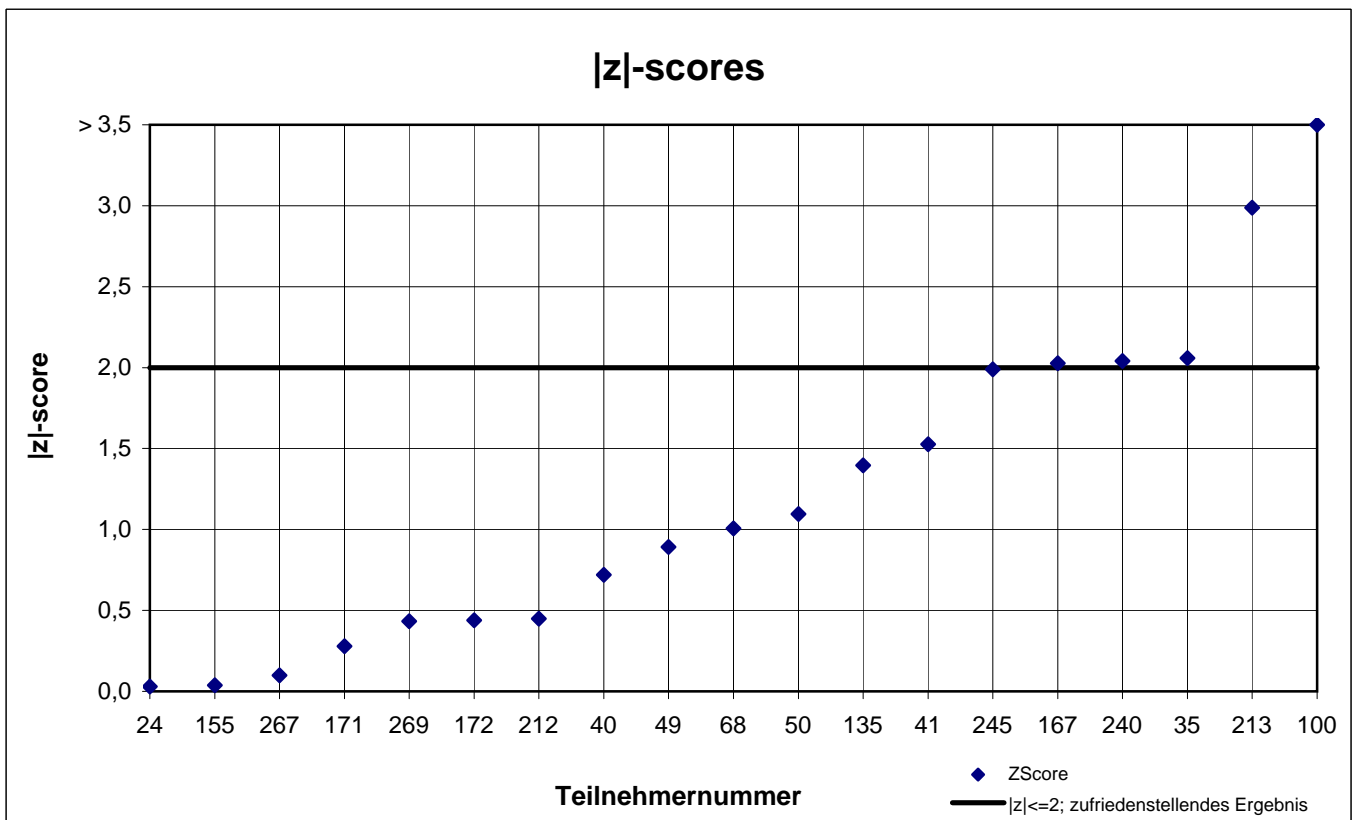
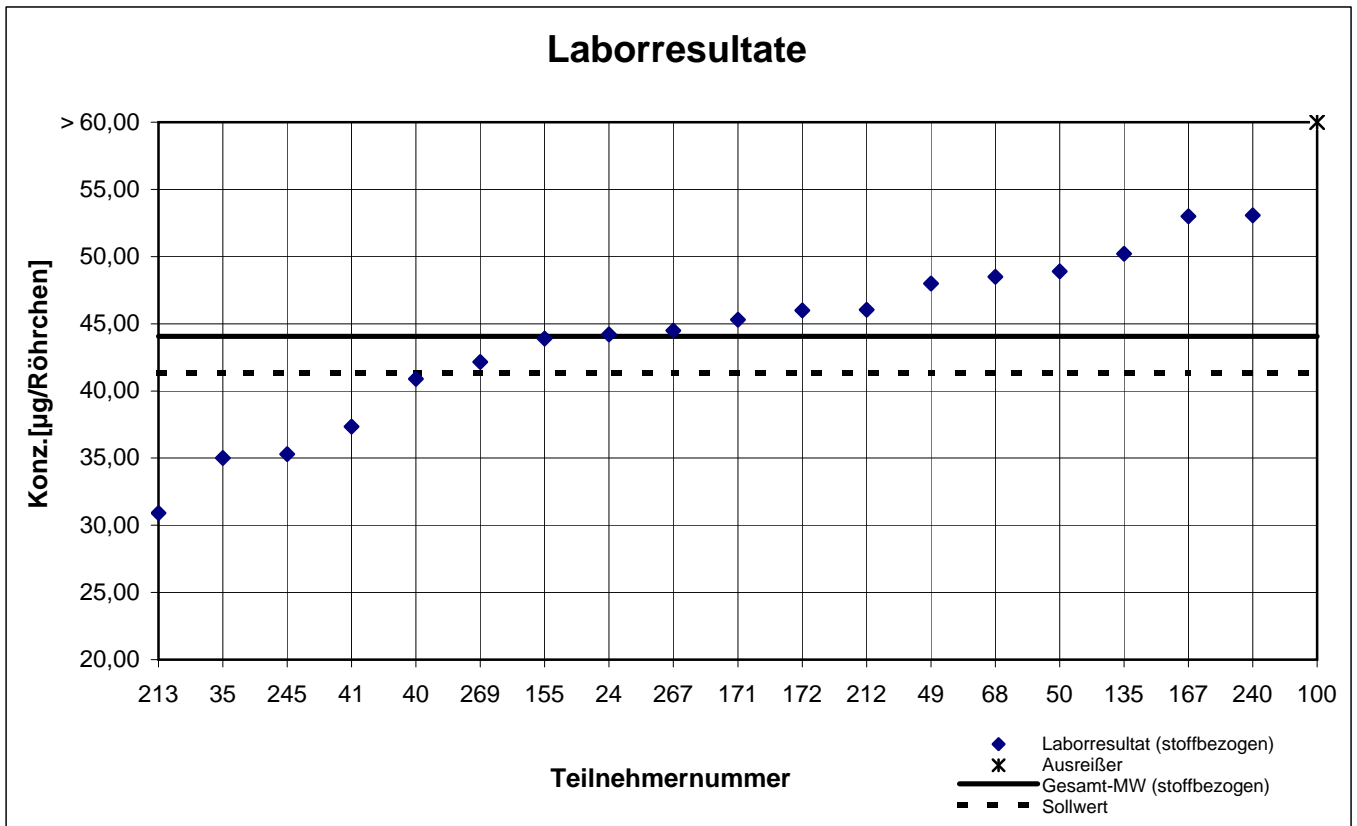
Probe 2 - Ergebnisse inkl. Toluol-Äquivalent



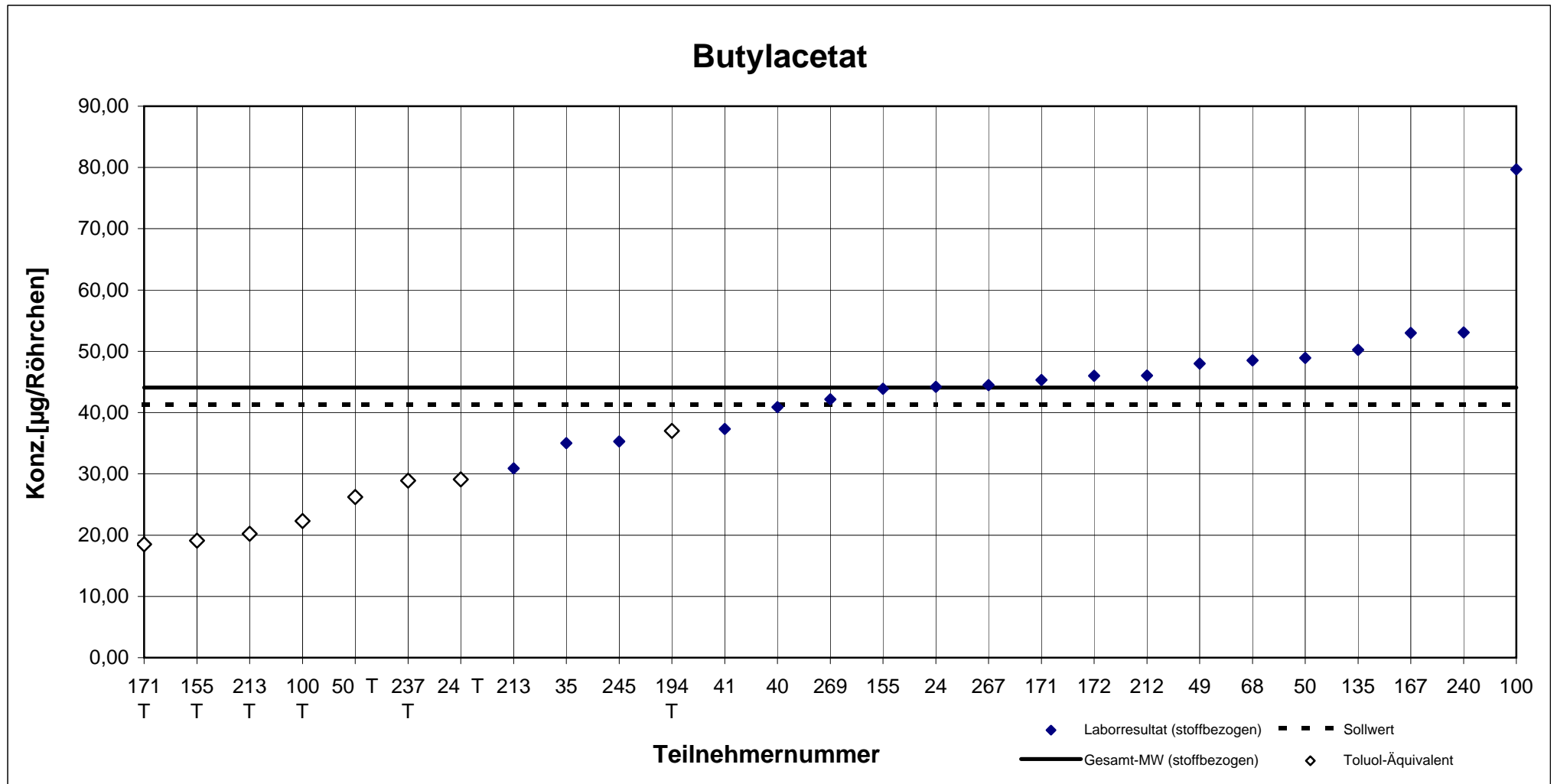
Teilnehmernummer + T = Ergebnis als Toluol-Äquivalent

Probe 2

Butylacetat



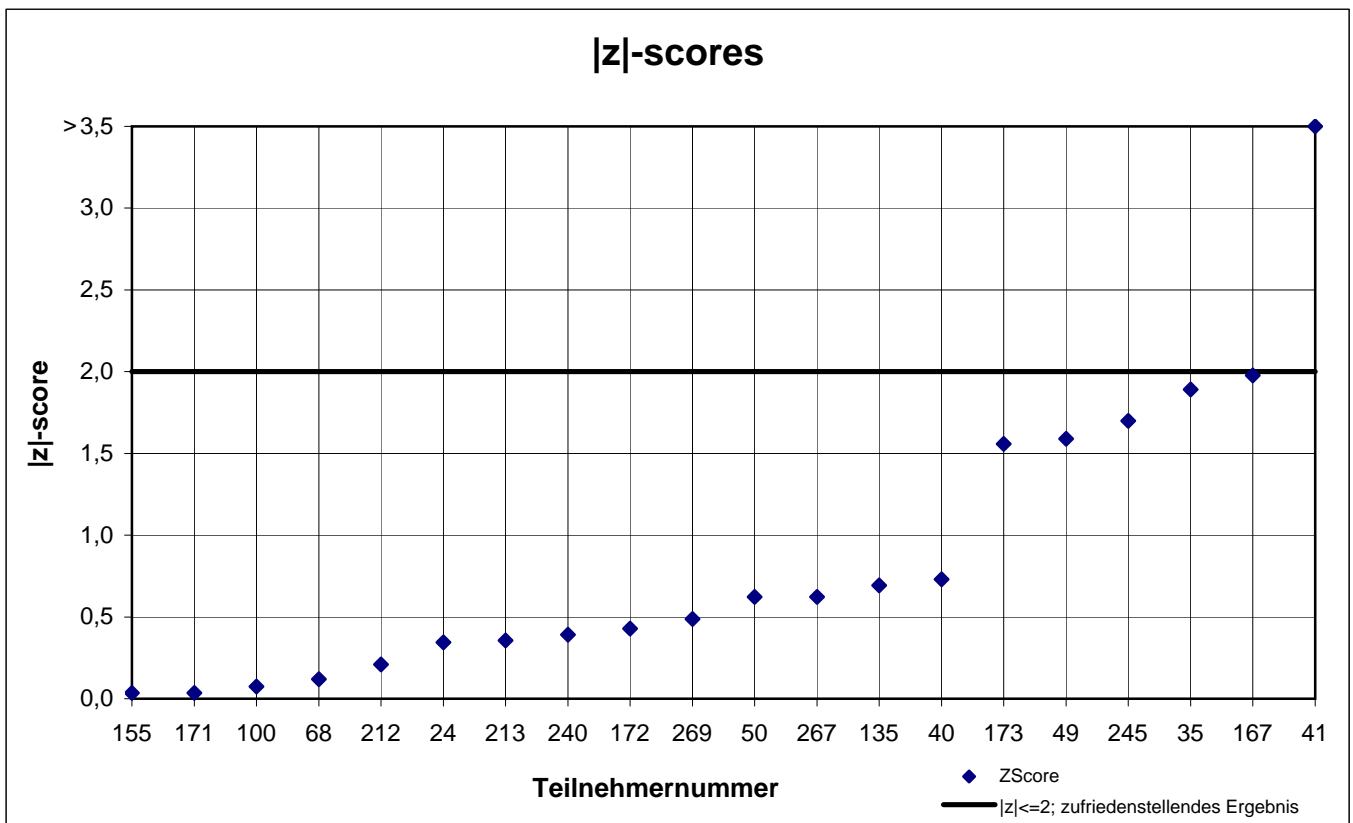
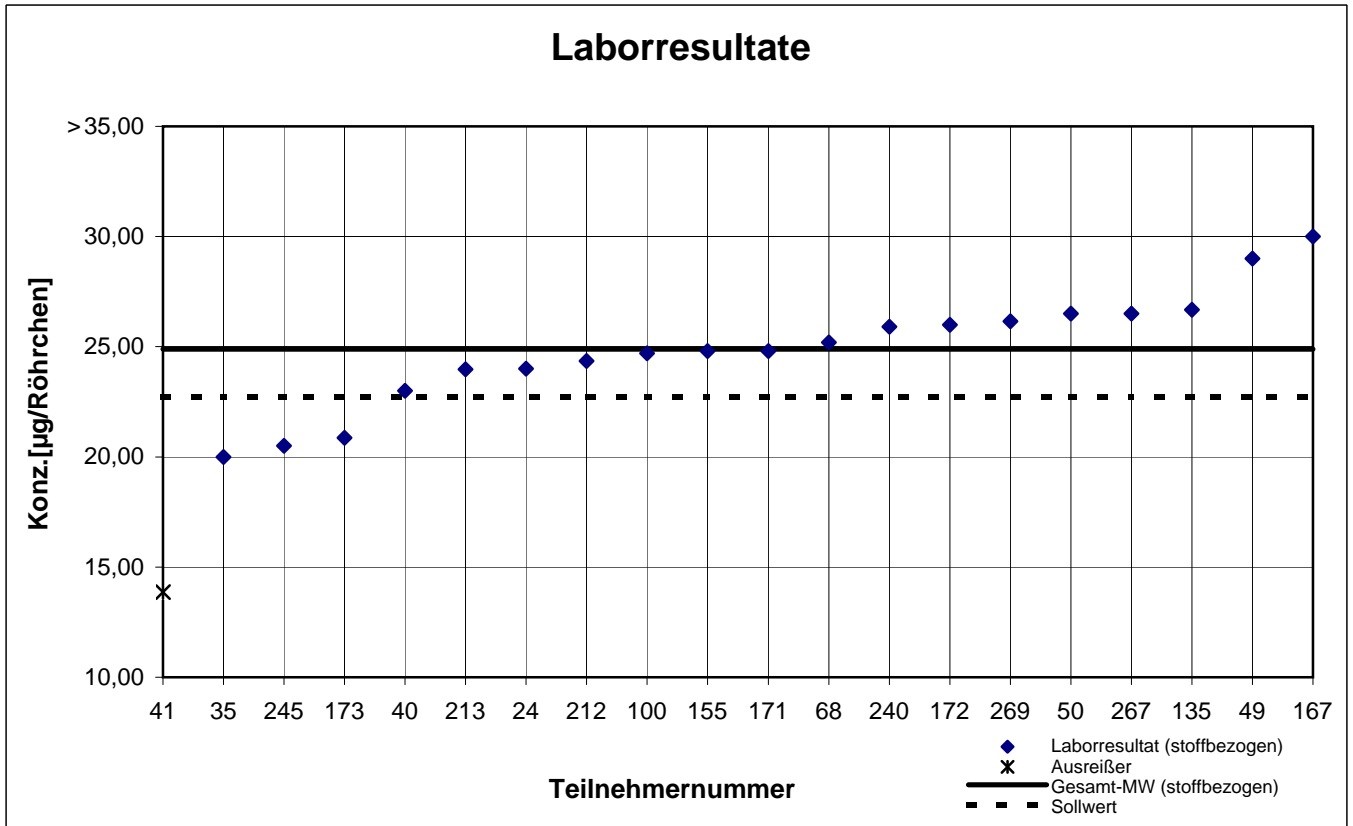
Probe 2 - Ergebnisse inkl. Toluol-Äquivalent



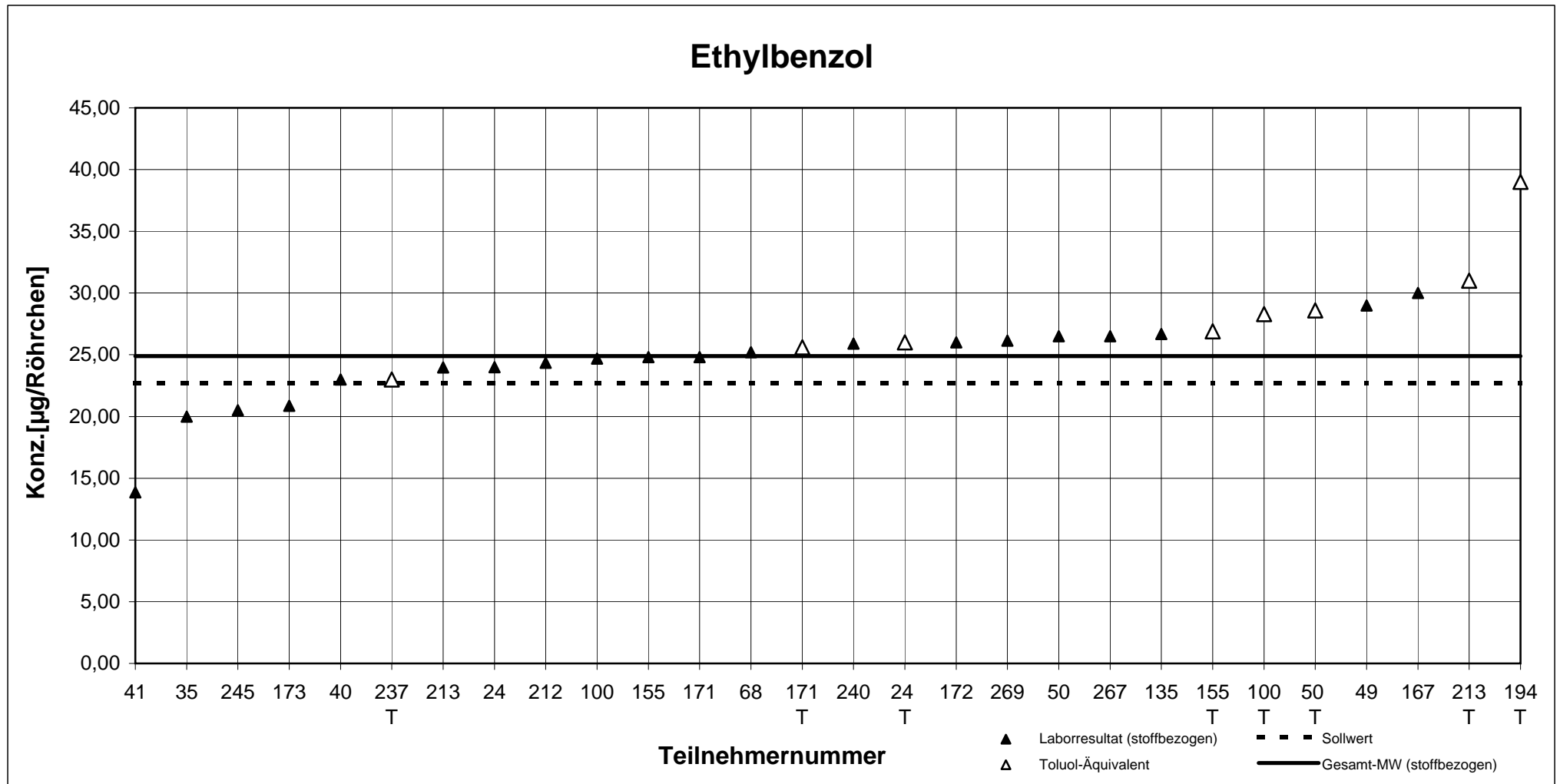
Teilnehmernummer + T = Ergebnis als Toluol-Äquivalent

Probe 2

Ethylbenzol



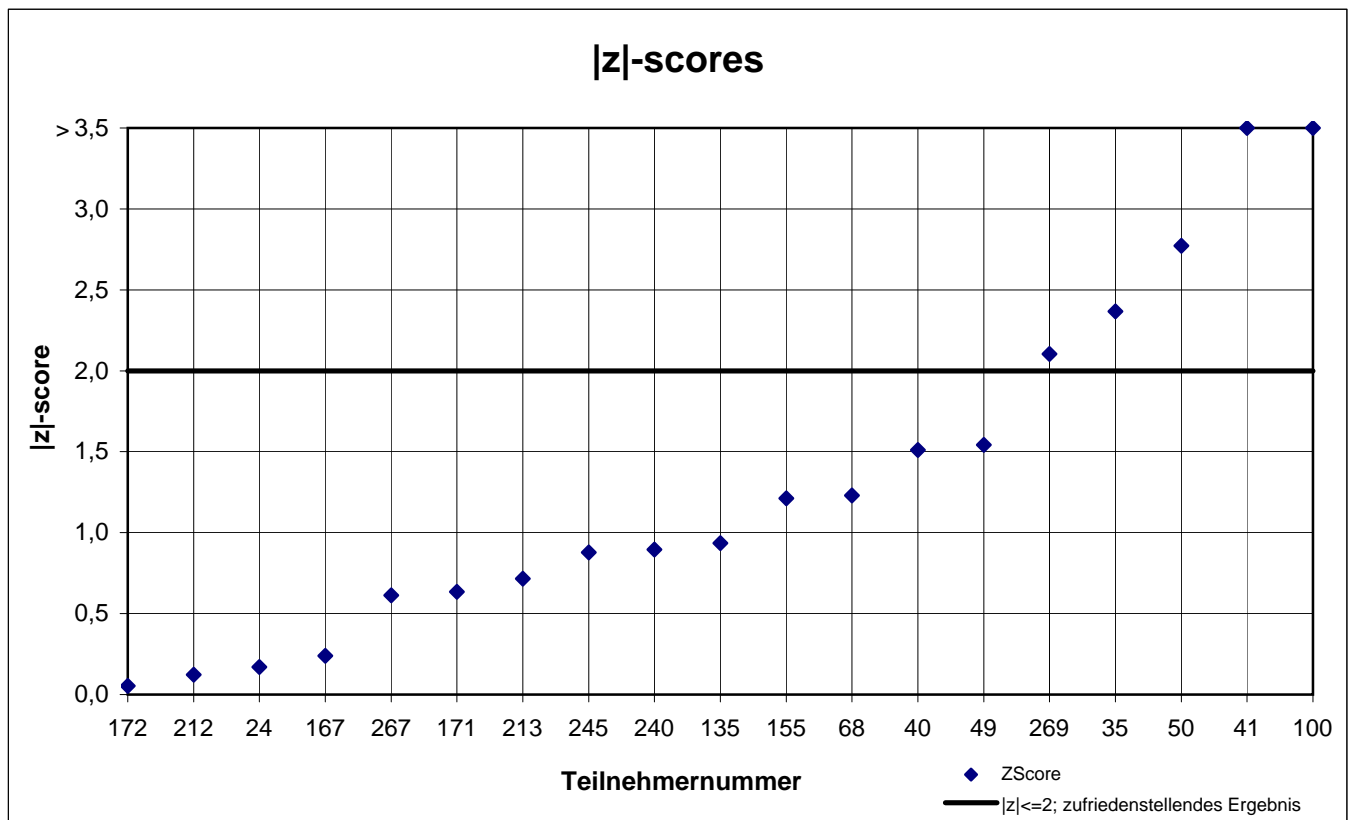
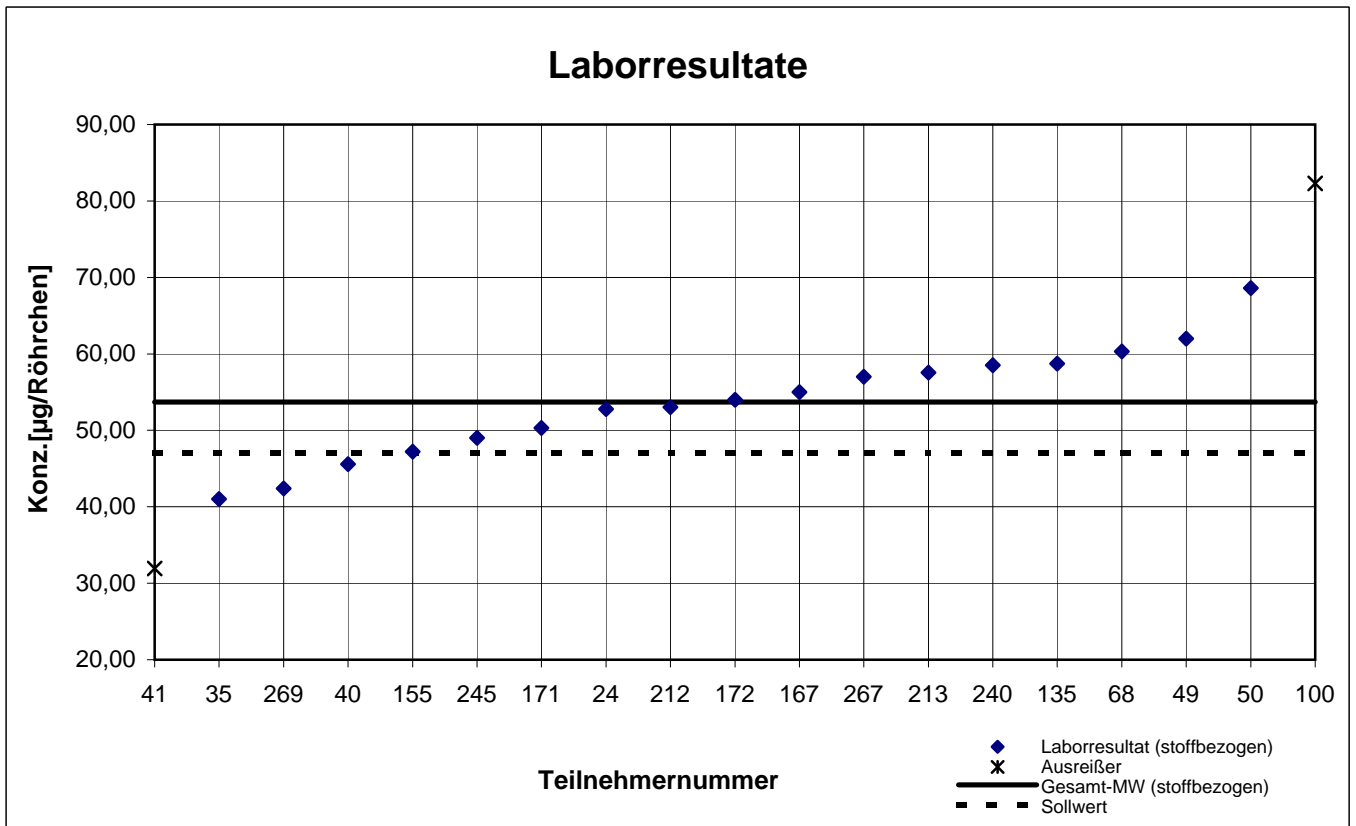
Probe 2 - Ergebnisse inkl. Toluol-Äquivalent



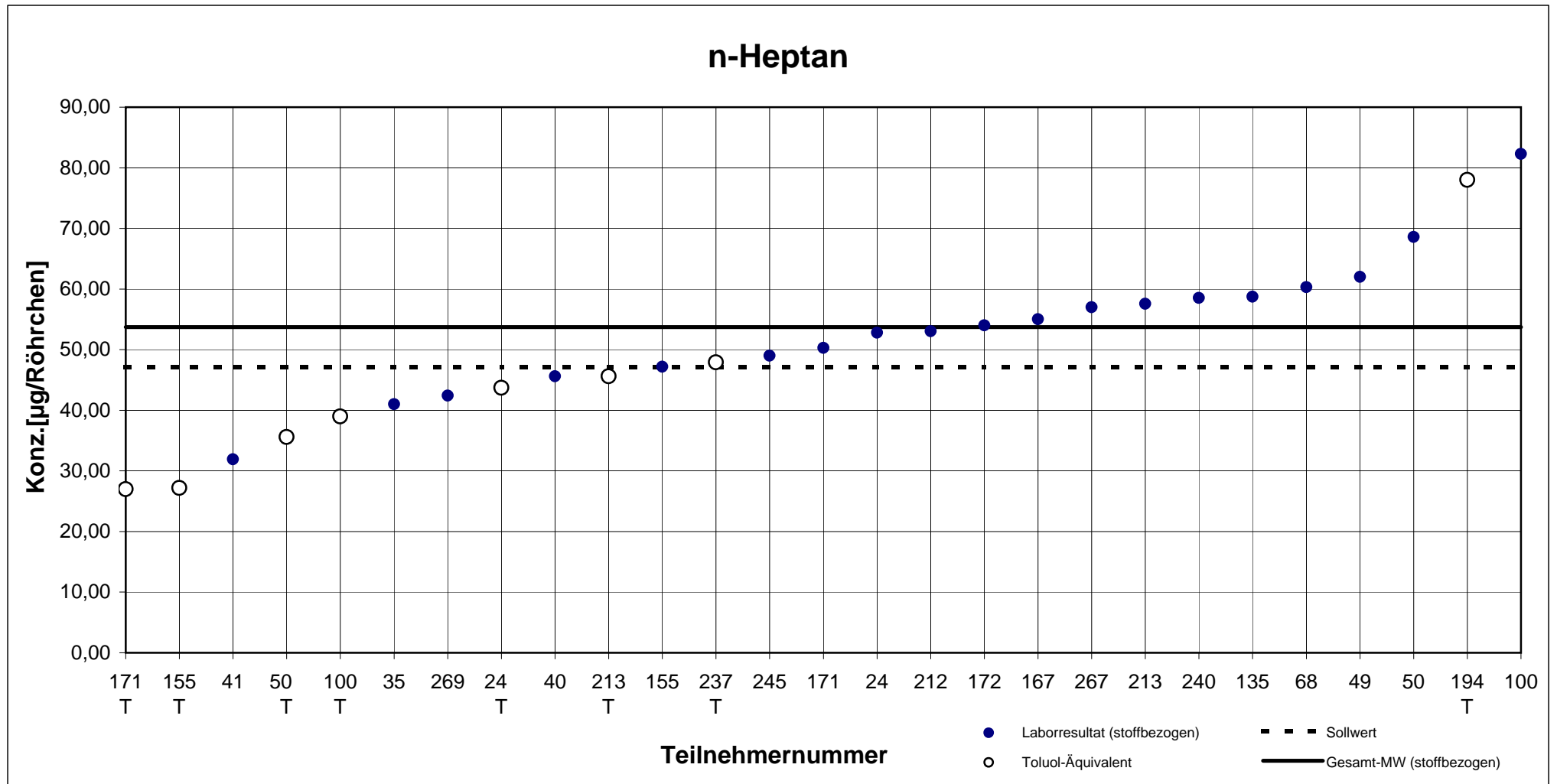
Teilnehmernummer + T = Ergebnis als Toluol-Äquivalent

Probe 2

n-Heptan



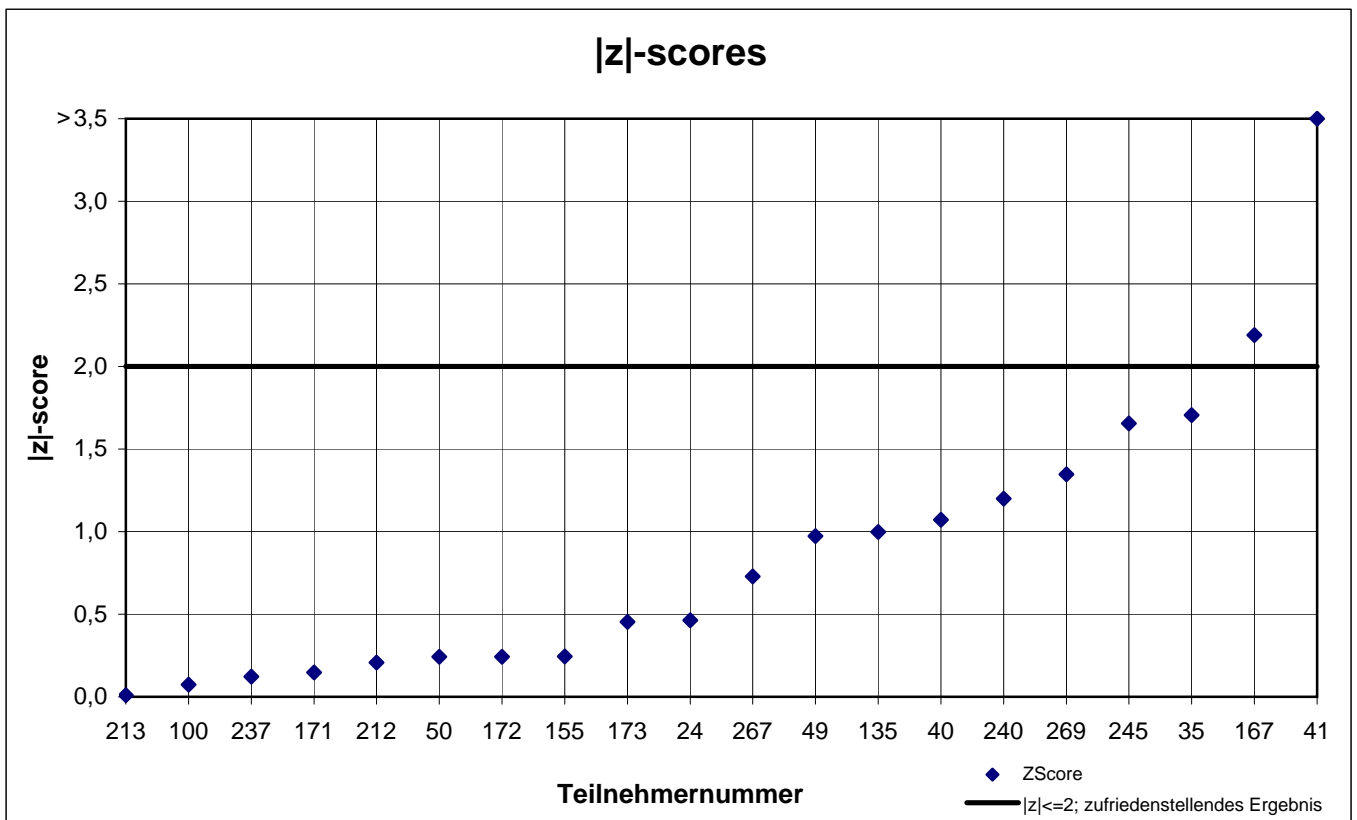
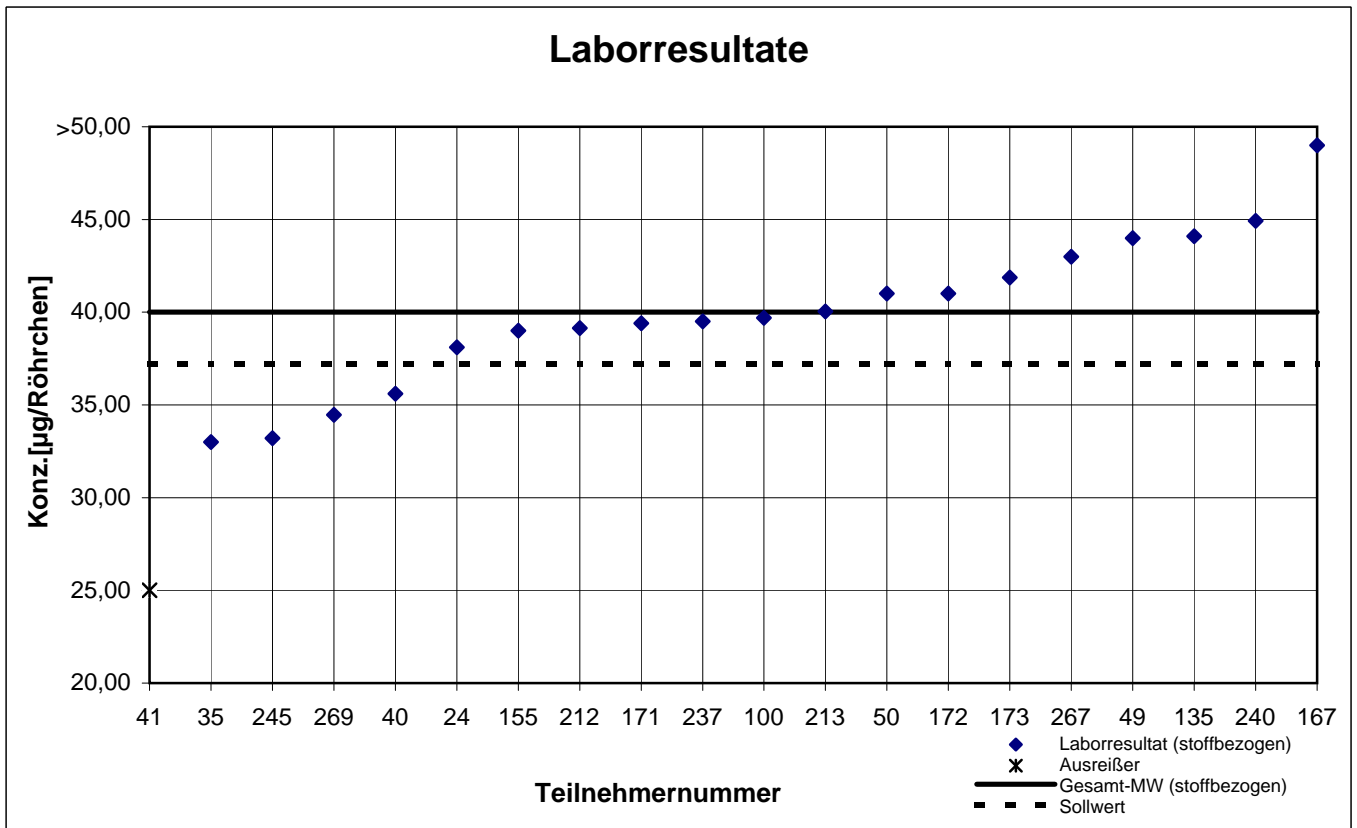
Probe 2 - Ergebnisse inkl. Toluol-Äquivalent



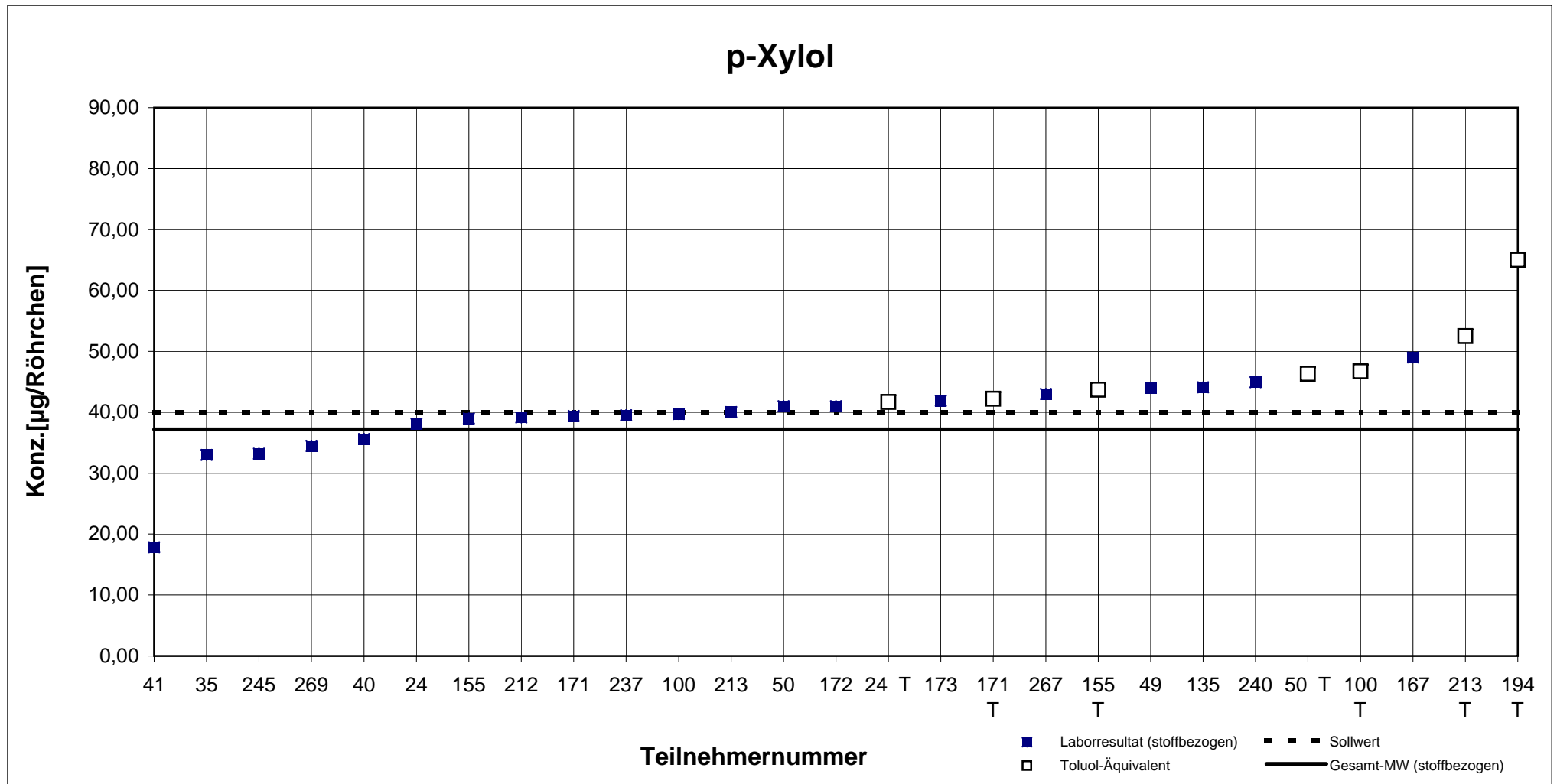
Teilnehmernummer + T = Ergebnis als Toluol-Äquivalent

Probe 2

p-Xylol



Probe 2 - Ergebnisse inkl. Toluol-Äquivalent



Teilnehmernummer + T = Ergebnis als Toluol-Äquivalent

Probe 2

Toluol

