

# results sample 1

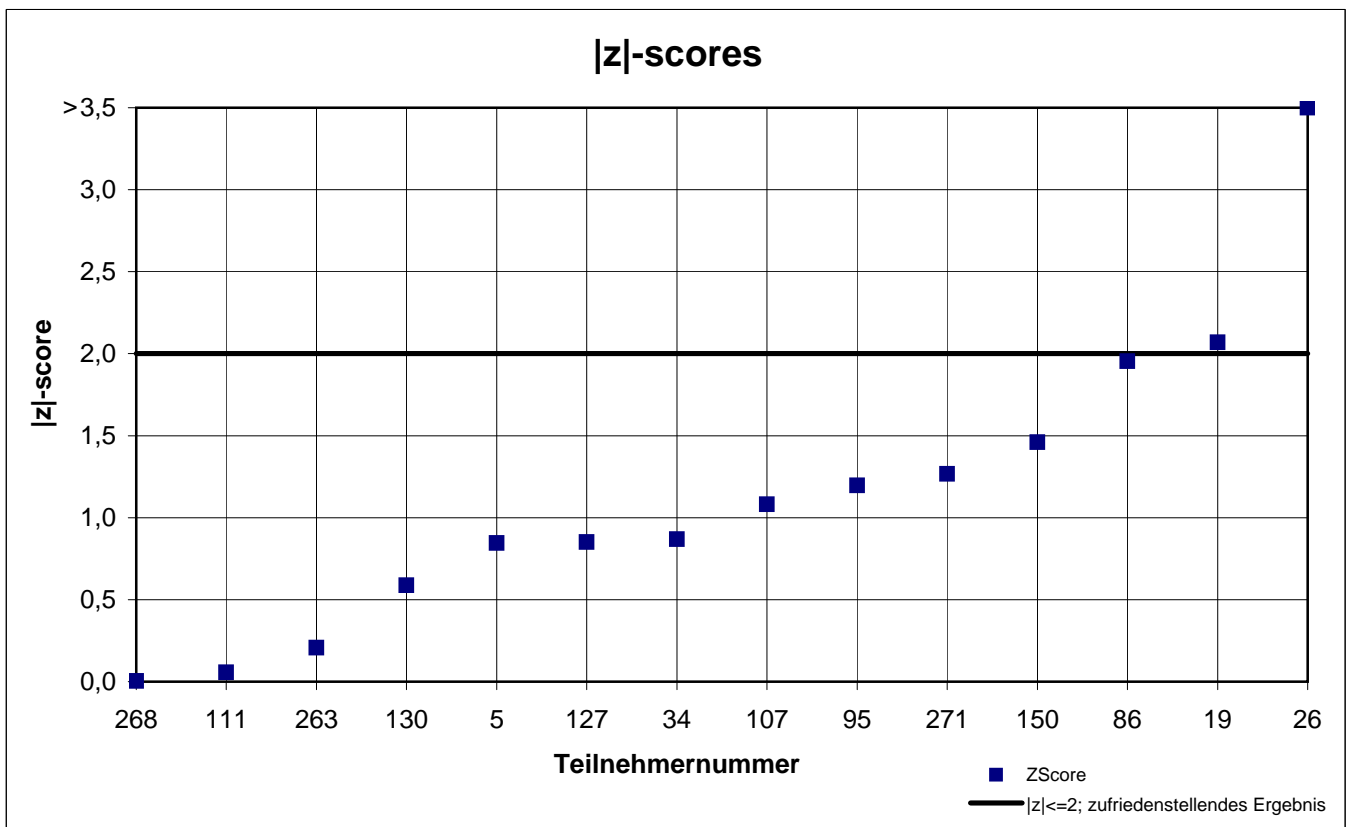
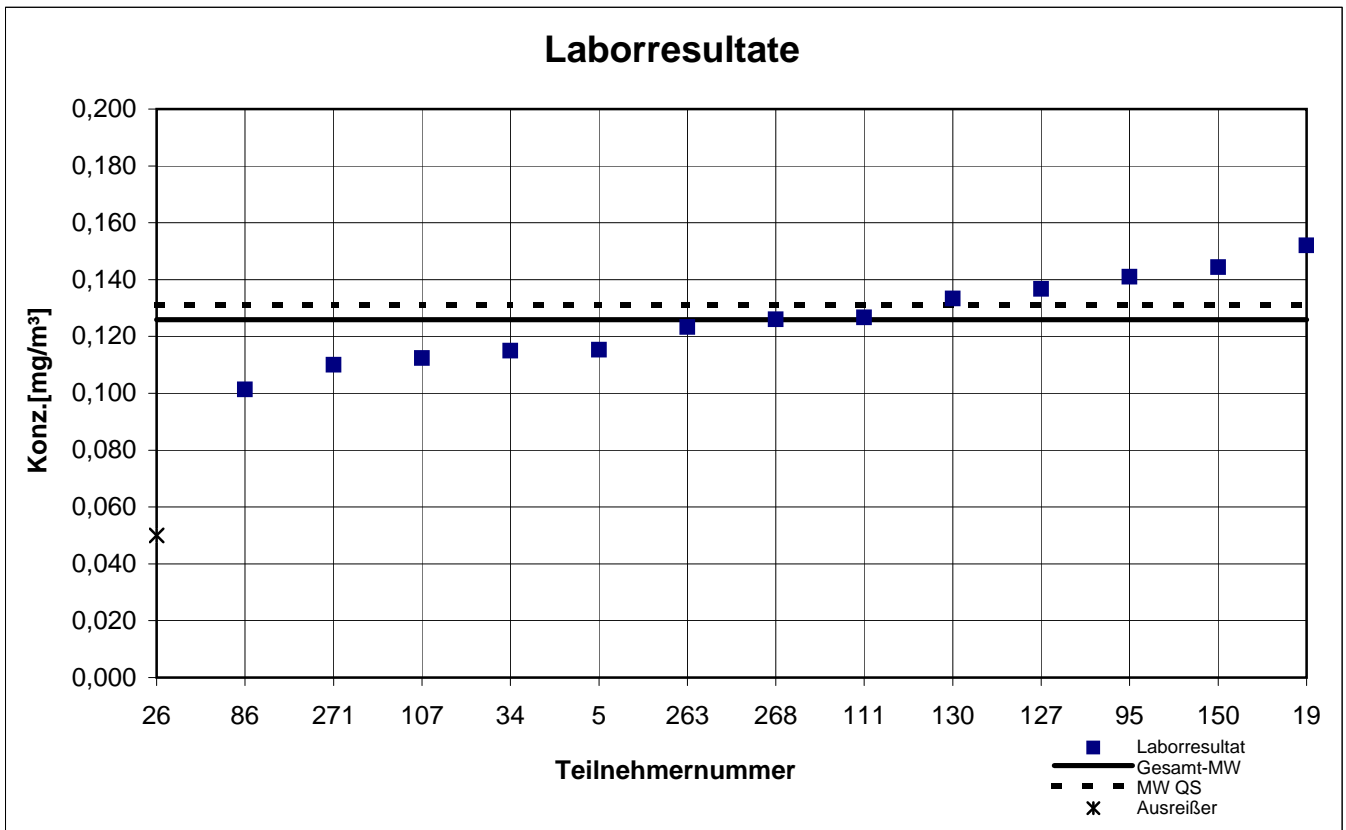
participant number	Formaldehyde	
	result (mg / m <sup>3</sup> )	z  - score
5	0,115	0,8
19	0,152	2,1
26	0,013	9,0
34	0,115	0,9
86	0,101	2,0
95	0,141	1,2
107	0,112	1,1
111	0,127	0,1
127	0,137	0,9
130	0,133	0,6
150	0,144	1,5
263	0,123	0,2
268	0,126	0,0
271	0,110	1,3

marked  fields are outliers

	Form- aldehyde
mean $c_k$ [mg / m <sup>3</sup> ]	0,126
standard deviation $S_k$ [mg / m <sup>3</sup> ]	0,015
rel. standard deviation [%]	11,91
mean value of control samples	0,131

# Probe 1

## Formaldehyd



## results sample 2

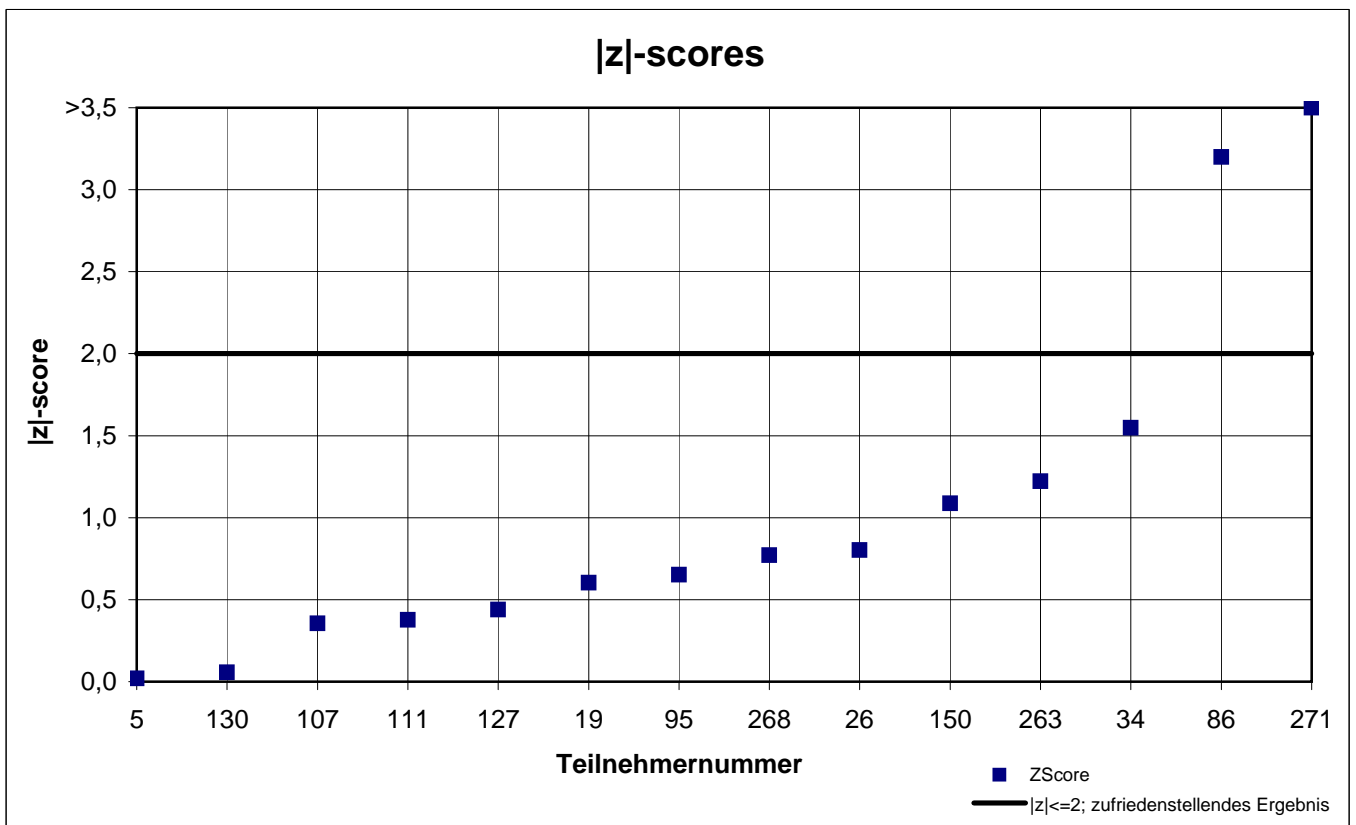
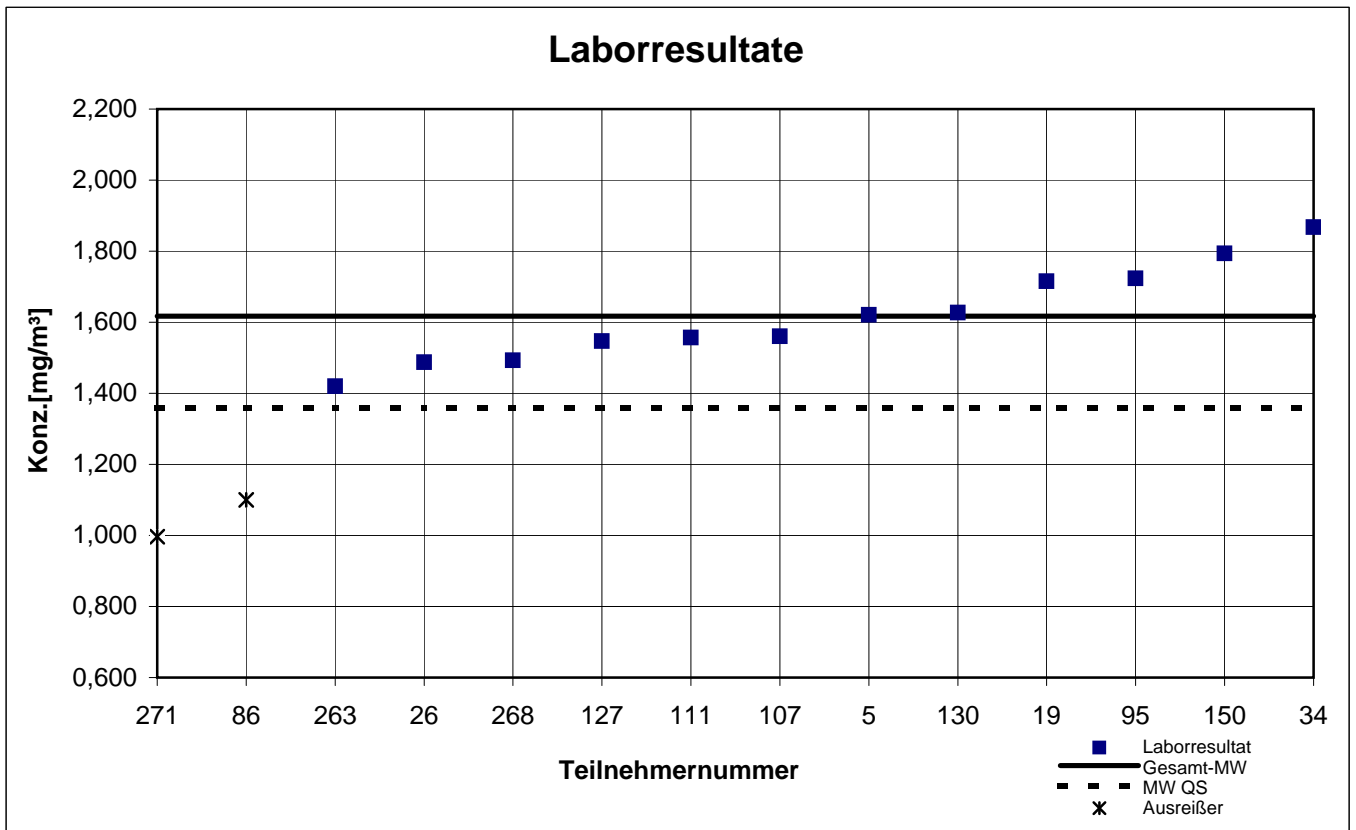
participant number	Acetaldehyde		Formaldehyde		Propionaldehyde	
	result (mg / m <sup>3</sup> )	z  - score	result (mg / m <sup>3</sup> )	z  - score	result (mg / m <sup>3</sup> )	z  - score
5	1,621	0,0	0,055	0,7	1,944	0,6
19	1,715	0,6	0,070	1,9	1,990	0,9
26	1,488	0,8	0,060	0,2	1,741	0,5
34	1,868	1,5	0,082	4,0	2,200	2,0
86	1,100	3,2	0,062	0,6	1,000	4,5
95	1,723	0,7	0,063	0,7	2,194	2,0
107	1,560	0,4	0,047	2,1	1,703	0,7
111	1,557	0,4	0,060	0,2	1,750	0,4
127	1,547	0,4	0,066	1,2	1,767	0,3
130	1,627	0,1	0,061	0,3	1,870	0,2
150	1,793	1,1	0,065	1,0	2,000	0,9
263	1,420	1,2	0,055	0,7	1,650	1,0
268	1,493	0,8	0,057	0,3	1,629	1,1
271	0,997	3,8	0,044	2,5	1,350	2,6

marked  fields are outliers

	Acet- aldehyde	Form- aldehyde	Propion- aldehyde
mean $c_k$ [mg / m <sup>3</sup> ]	1,618	0,059	1,830
standard deviation $S_k$ [mg / m <sup>3</sup> ]	0,134	0,007	0,237
rel. standard deviation [%]	8,27	12,53	12,97
mean value of control samples	1,358	0,056	1,566

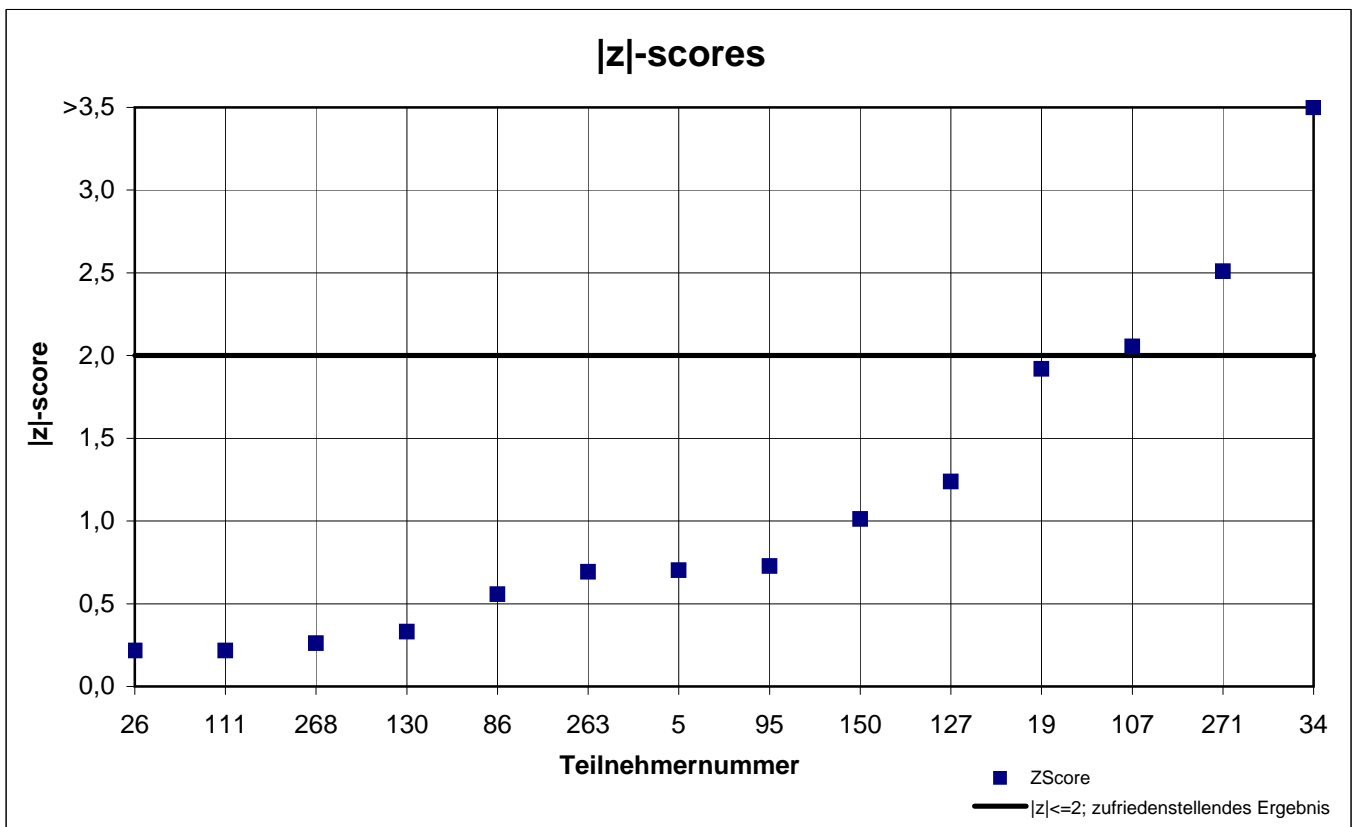
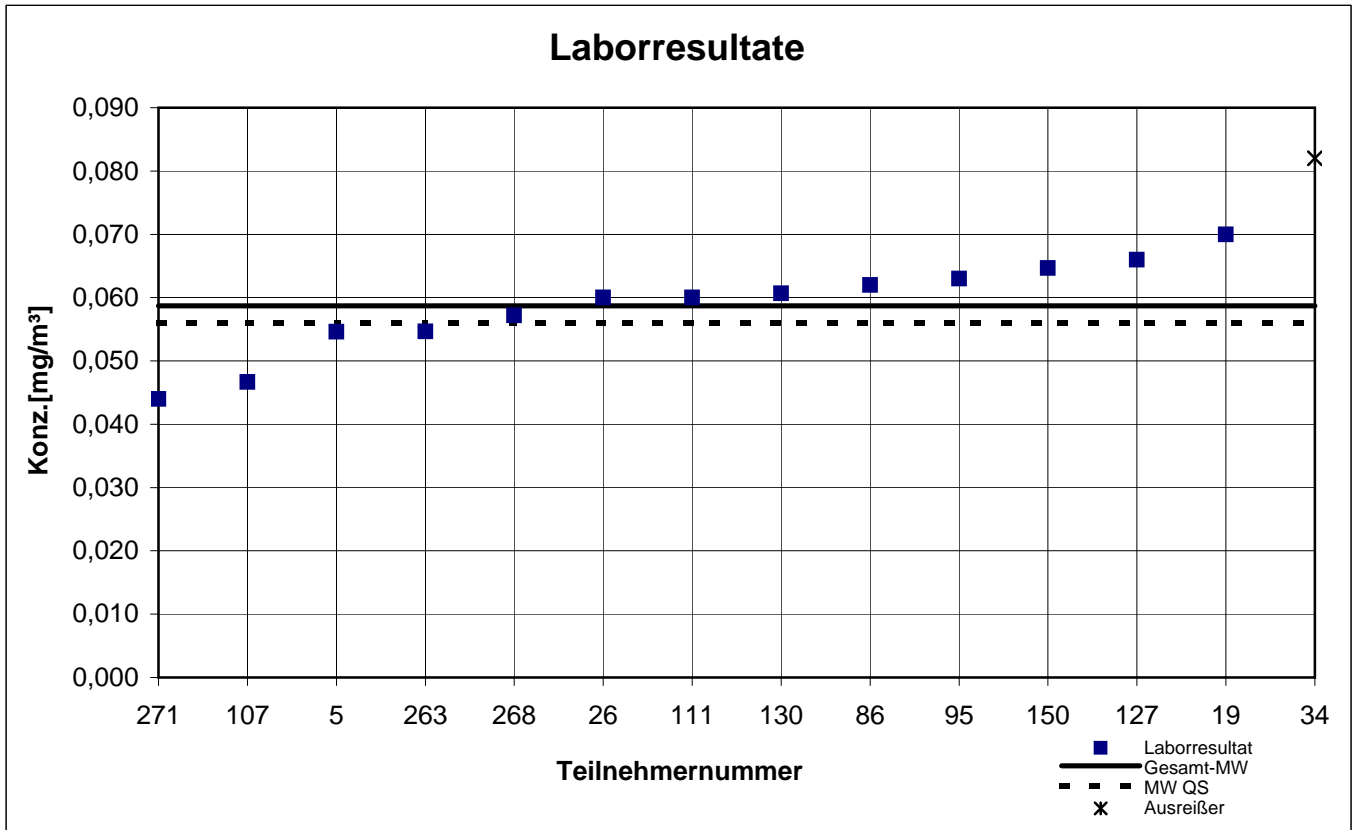
# Probe 2

## Acetaldehyd



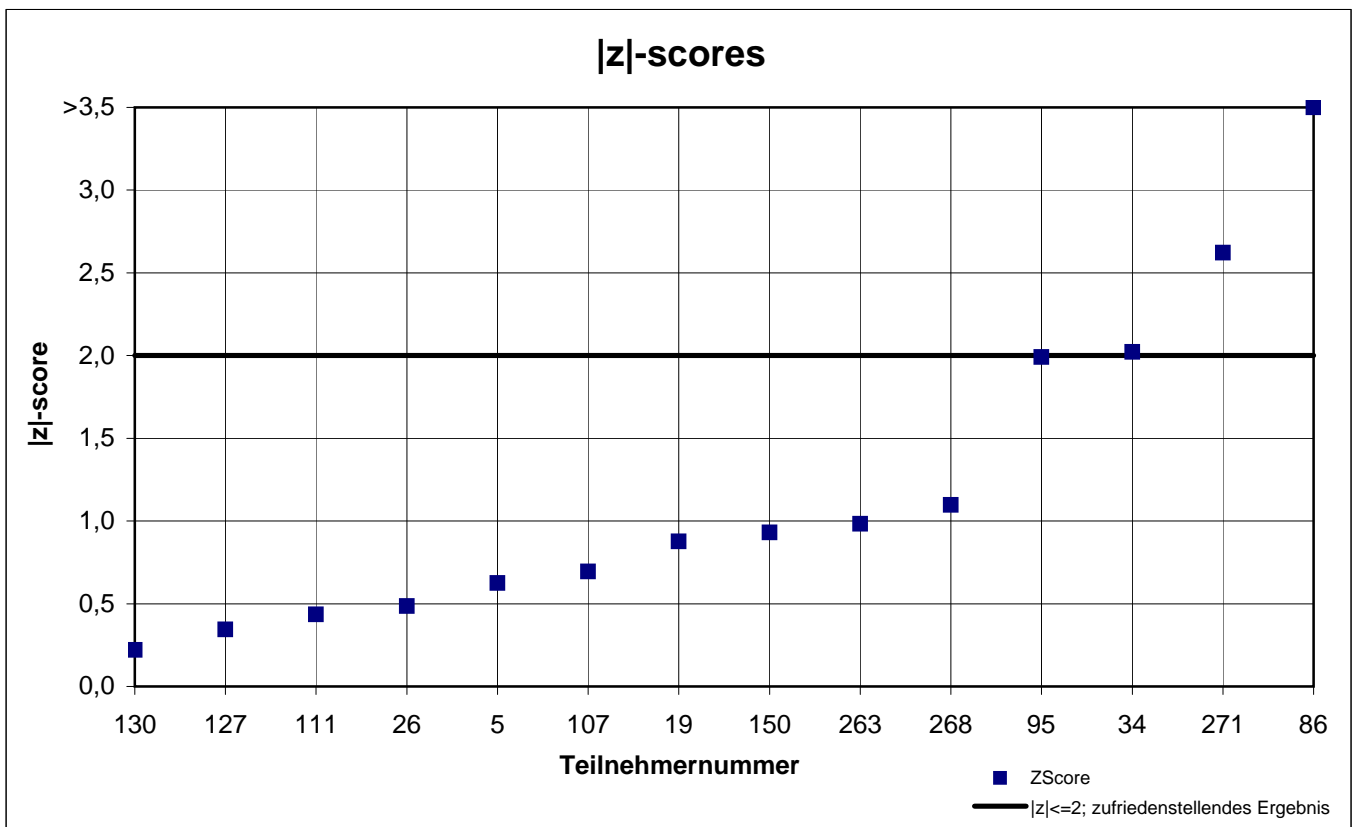
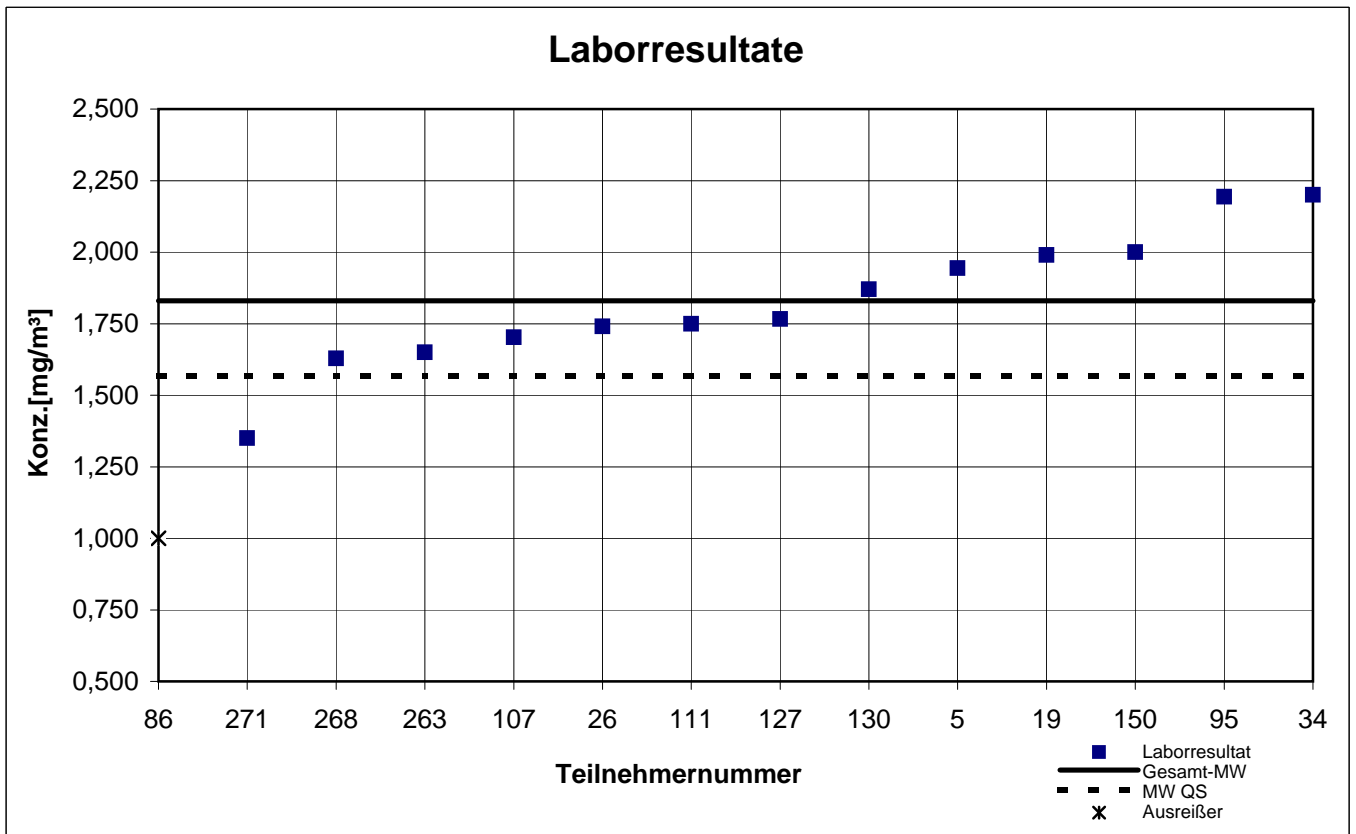
# Probe 2

## Formaldehyd



# Probe 2

## Propionaldehyd



## results sample 3

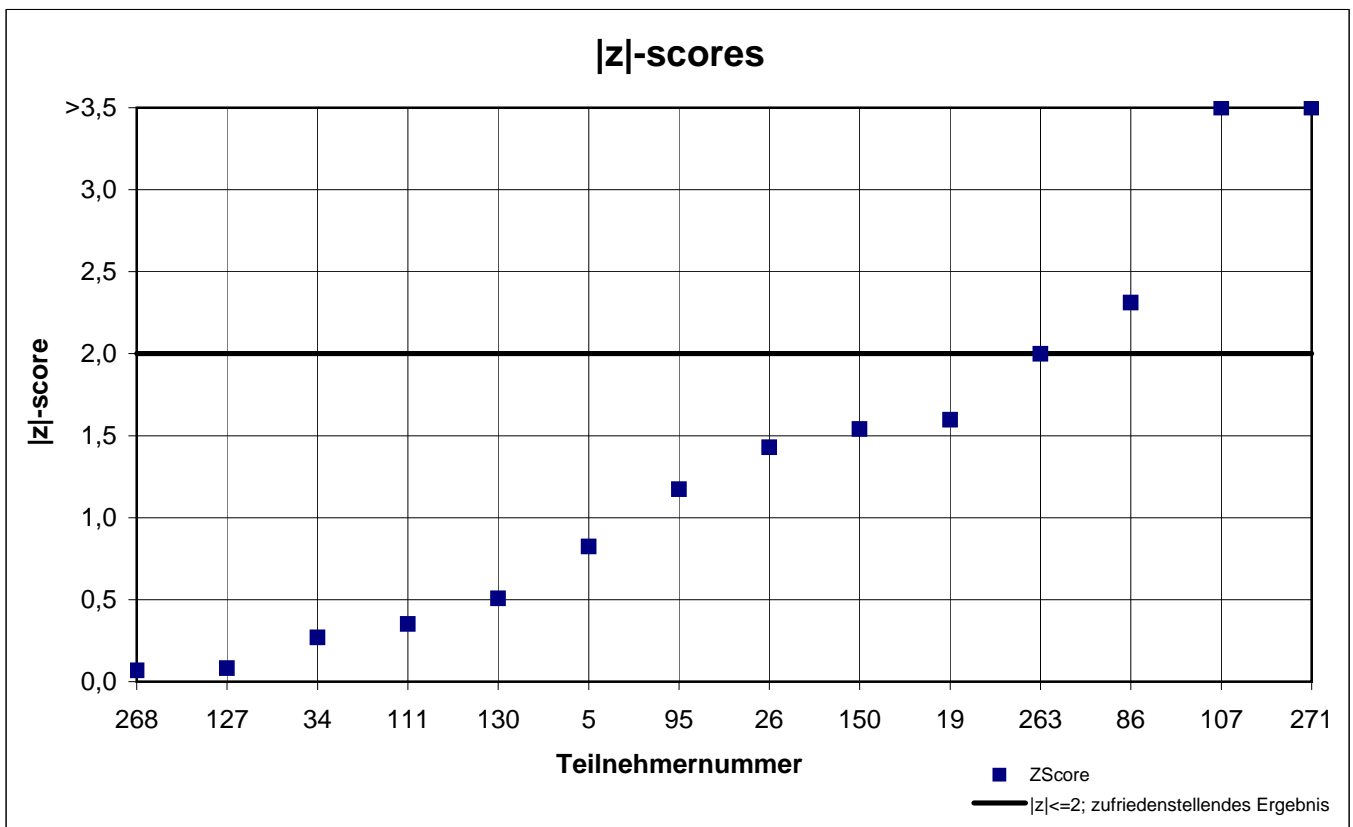
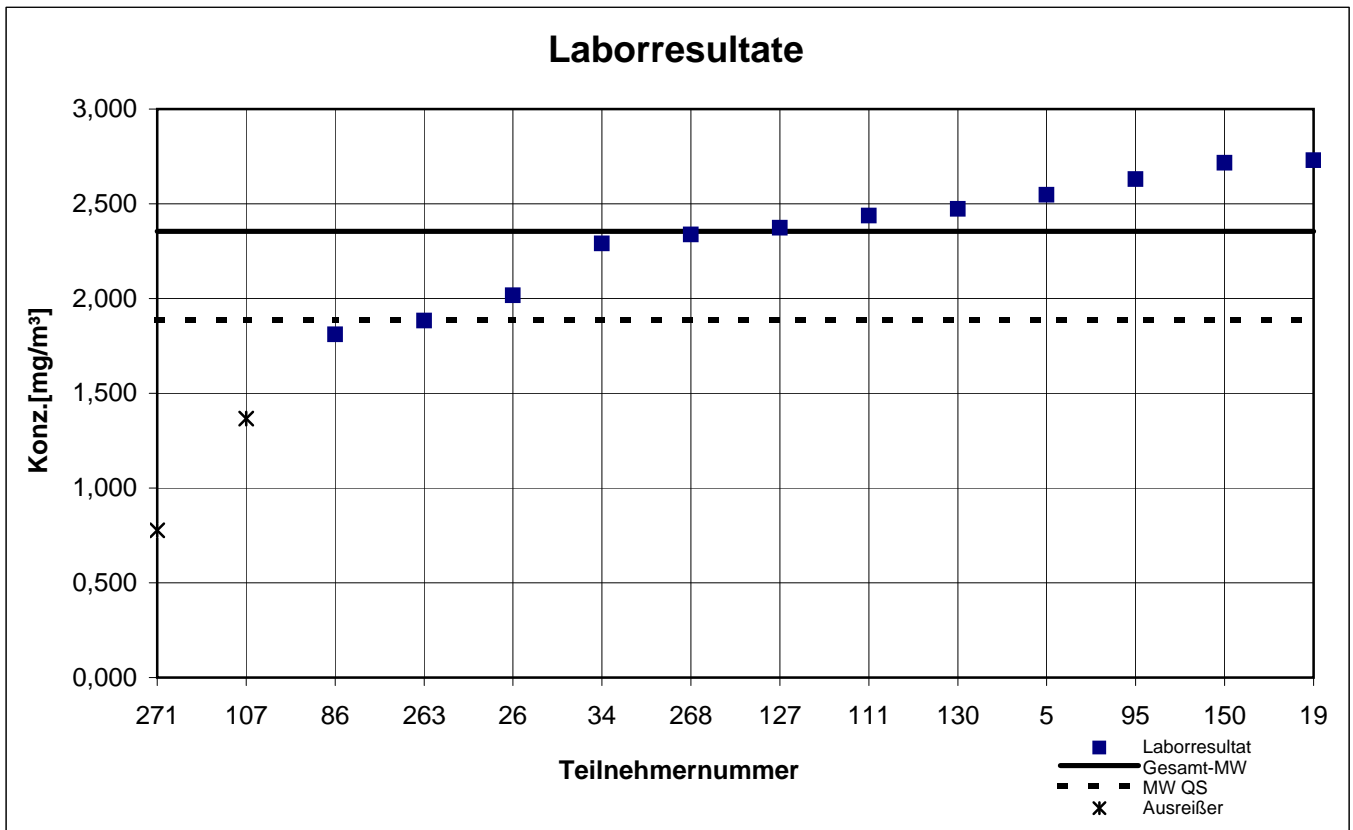
participant number	Acetaldehyde		Formaldehyde		Propionaldehyde	
	result (mg / m <sup>3</sup> )	z  - score	result (mg / m <sup>3</sup> )	z  - score	result (mg / m <sup>3</sup> )	z  - score
5	2,548	0,8	0,079	0,8	3,025	1,1
19	2,730	1,6	0,104	2,0	3,175	1,6
26	2,018	1,4	0,086	0,1	2,796	0,2
34	2,291	0,3	0,113	3,1	2,803	0,3
86	1,810	2,3	0,137	5,8	1,670	3,9
95	2,630	1,2	0,089	0,3	3,349	2,3
107	1,366	4,2	0,070	1,9	2,030	2,6
111	2,437	0,4	0,090	0,4	2,730	0,0
127	2,373	0,1	0,088	0,1	2,767	0,1
130	2,473	0,5	0,085	0,2	2,870	0,5
150	2,717	1,5	0,097	1,2	3,087	1,3
263	1,883	2,0	0,078	0,9	2,353	1,4
268	2,338	0,1	0,082	0,5	2,559	0,6
271	0,777	6,7	0,063	2,7	1,990	2,7

marked  fields are outliers

	Acet- aldehyde	Form- aldehyde	Propion- aldehyde
mean $c_k$ [mg / m <sup>3</sup> ]	2,354	0,087	2,733
standard deviation $S_k$ [mg / m <sup>3</sup> ]	0,308	0,013	0,412
rel. standard deviation [%]	13,08	15,19	15,06
mean value of control samples	1,888	0,079	2,386

# Probe 3

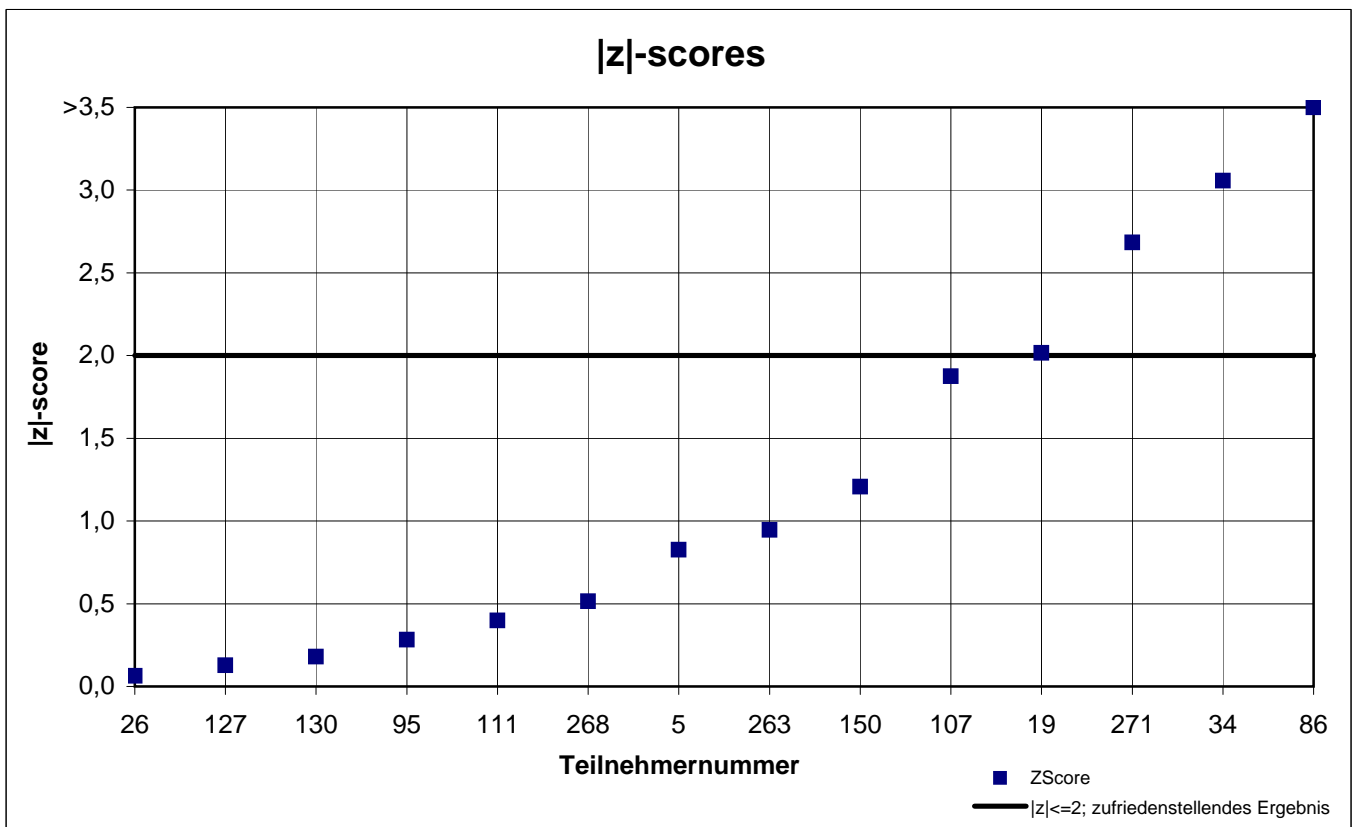
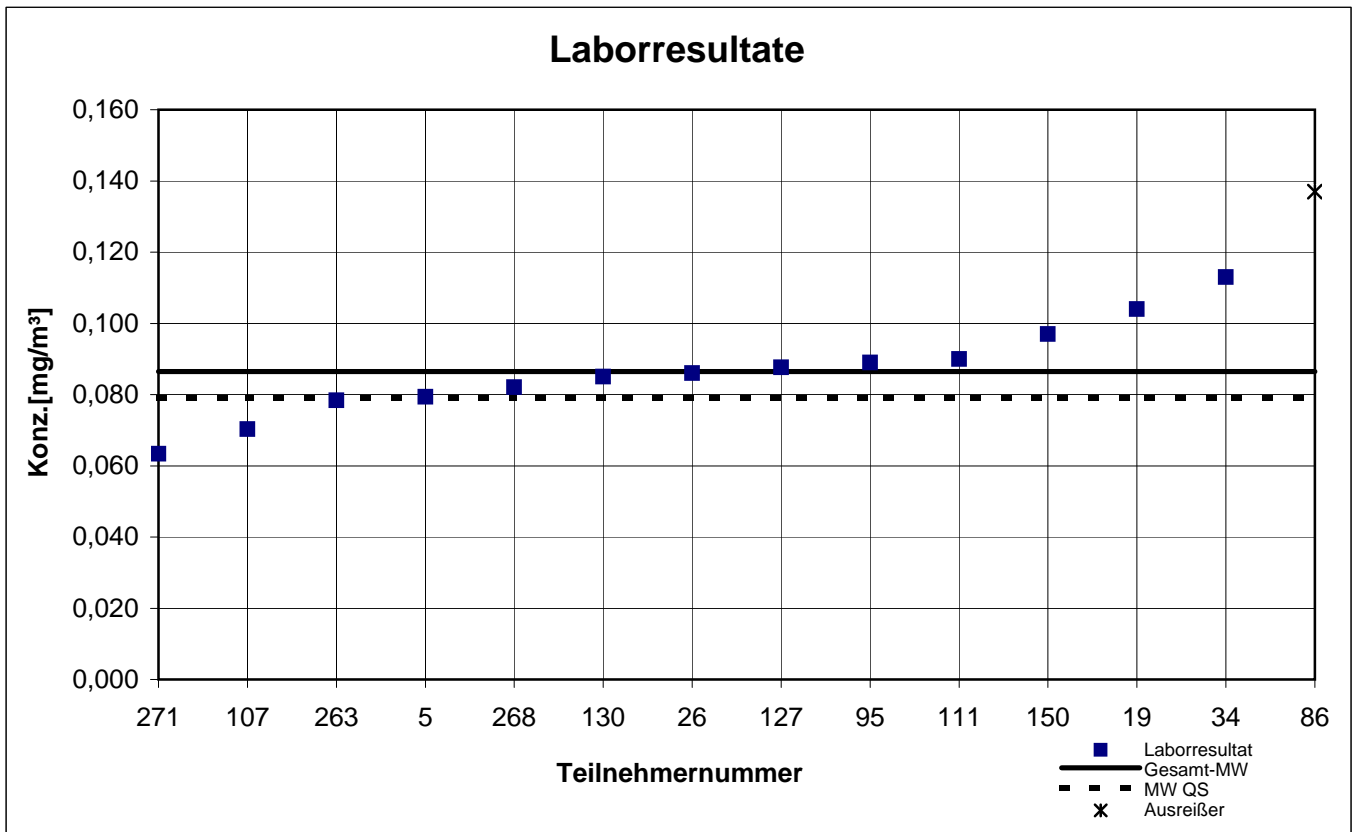
## Acetaldehyd





# Probe 3

## Formaldehyd



# Probe 3

## Propionaldehyd

