

### sample 1 - results (part 1)

participant number	2-Butoxyethanol		2-Ethylhexanol		2-Phenoxyethanol		Dodecane		Hexanal	
	result (µg / m³)	z  - score	result (µg / m³)	z  - score	result (µg / m³)	z  - score	result (µg / m³)	z  - score	result (µg / m³)	z  - score
87	77,35		20,20	0,9	66,6	4,2	44,70	0,8	44,20	
88	55,00		17,00	0,8	153,00	3,4	47,00	0,3	12,00	
90	41,27		17,77	0,4	51,2	5,5	55,10	1,3	11,03	
93	52,30		21,83	1,8	113,05	0,1	50,48	0,4	8,98	
99	9,00		23,50	2,7	95,50	1,6	17,00	6,5	22,00	
135	48,55		19,50	0,6	132,8	1,6	50,45	0,4	22,00	
139*	k.A.		k.A.	k.A.	k.A.	k.A.	53,50	1,0	8,00	
155	67,50		28,00	5,2	162,5	4,2	82,50	7,0	29,50	
169	30,90		12,50	3,2	101,5	1,1	46,70	0,4	12,75	
175	32,50		19,00	0,3	102,5	1,0	72,00	4,8	13,00	
189	55,96		22,41	2,1	116,3	0,2	53,48	1,0	22,15	
192	14,25		10,39		58,0		47,38	0,2	6,40	
208	32,60		15,79	1,4	89,1	2,2	42,84	1,2	29,36	
212	35,40		14,45	2,2	104,5	0,8	49,25	0,1	16,20	
215	39,00		27,50	4,9	115,0	0,1	51,00	0,5	26,00	
237	42,25		17,60	0,5	132,5	1,6	39,75	1,8	19,60	

marked

fields are outliers

\* on site sampling

Toluene equivalent

	2-Butoxy-ethanol	2-Ethyl-hexanol	2-Phenoxy-ethanol	Dodecane	Hexanal
mean $c_k$ [µg / m³]		18,46	114,2	48,59	
standard deviation $S_k$ [µg / m³]		3,286	18,871	4,449	
rel. standard deviation [%]		17,80	16,53	9,16	
"true result" [µg / m³]	43,10	19,30	117,2	49,10	25,80

## sample 1 - results (part 2)

participant number	n-Butyl acetate		Octamethylcyclo-tetrasiloxane		p-Xylene		R(+)-Limonene		Toluene	
	result (µg / m³)	z  - score	result (µg / m³)	z  - score	result (µg / m³)	z  - score	result (µg / m³)	z  - score	result (µg / m³)	z  - score
87	17,90	0,4	40,65	0,8	15,65	0,1	41,00	1,1	25,40	0,6
88	17,00	0,1	49,00	1,1	15,00	0,5	56,00	2,1	23,00	0,4
90	14,82	1,4	37,71	1,5	15,16	0,4	50,03	0,8	25,07	0,5
93	18,46	0,7	46,78	0,6	16,13	0,2	45,80	0,1	25,11	0,5
99	9,00	4,8	k.A.	k.A.	3,50	7,8	39,00	1,6	12,00	5,0
135	16,50	0,4	49,90	1,3	14,95	0,6	46,40	0,0	21,15	1,2
139*	20,50	1,9	116,00		15,00	0,5	48,50	0,5	23,50	0,2
155	29,00	6,9	75,00	7,0	19,50	2,3	52,50	1,4	30,00	2,5
169	15,70	0,9	44,00	0,0	14,25	1,0	31,40	3,2	24,90	0,4
175	13,00	2,4	95,00	11,5	19,50	2,3	59,50	2,9	24,50	0,2
189	20,27	1,8	121,70		17,55	1,1	49,23	0,7	26,54	1,1
192	17,31	0,1	79,83		15,23	0,4	42,20	0,9	22,68	0,5
208	16,55	0,4	75,07	7,0	14,04	1,1	42,67	0,8	36,78	5,3
212	16,75	0,3	37,60	1,5	13,90	1,2	44,05	0,5	20,00	1,7
215	17,00	0,1	49,50	1,2	16,50	0,4	44,00	0,5	23,00	0,4
237	18,85	1,0	42,25	0,4	14,95	0,6	47,00	0,2	20,65	1,4

marked

fields are outliers

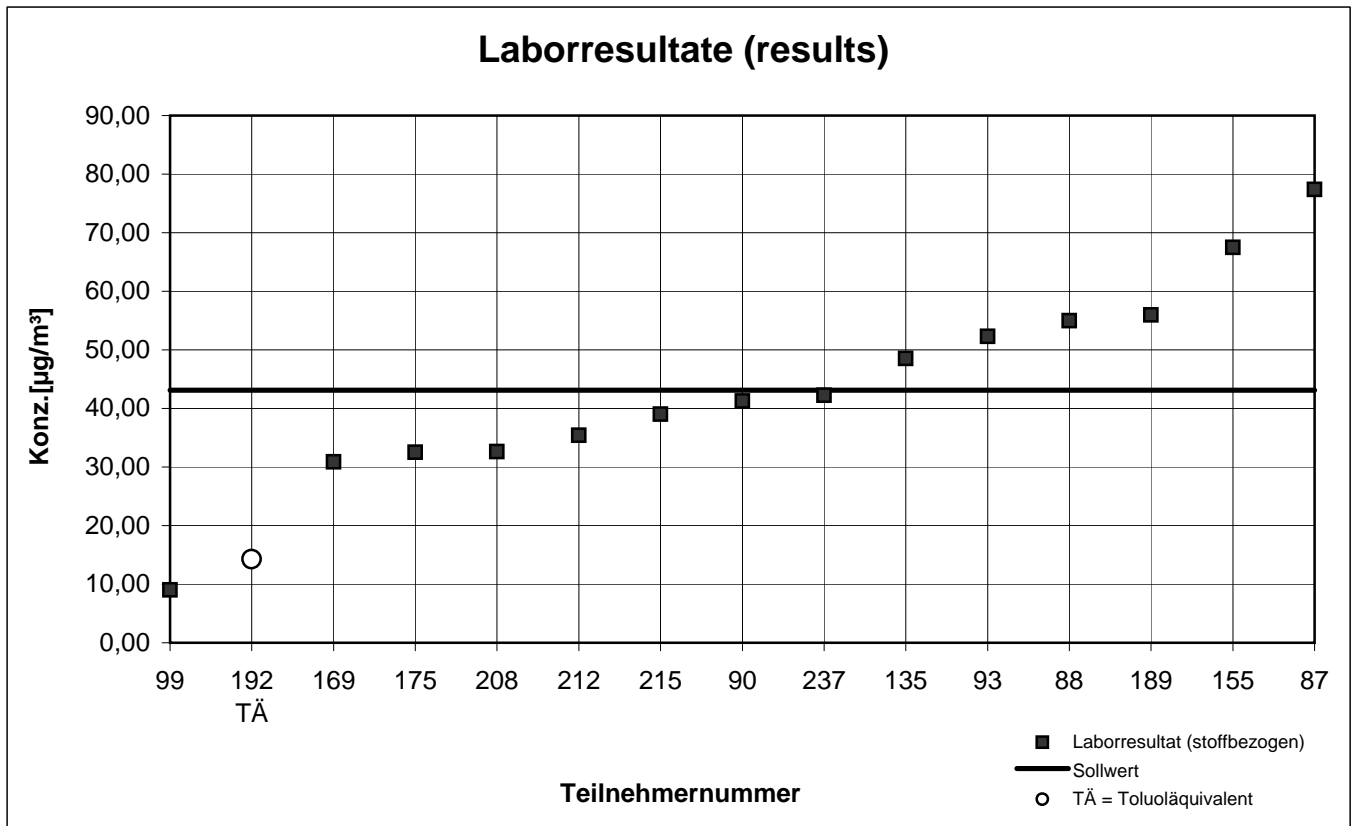
\* on site sampling

Toluene equivalent

	n-Butyl acetate	OMCTS	p-Xylene	R(+)-Limonene	Toluene
mean $c_k$ [µg / m³]	17,19	44,15	15,82	46,20	23,96
standard deviation $S_k$ [µg / m³]	1,998	4,903	1,765	6,725	2,589
rel. standard deviation [%]	11,62	11,10	11,15	14,56	10,80
"true result" [µg / m³]	16,60	35,80	13,70	47,50	18,20

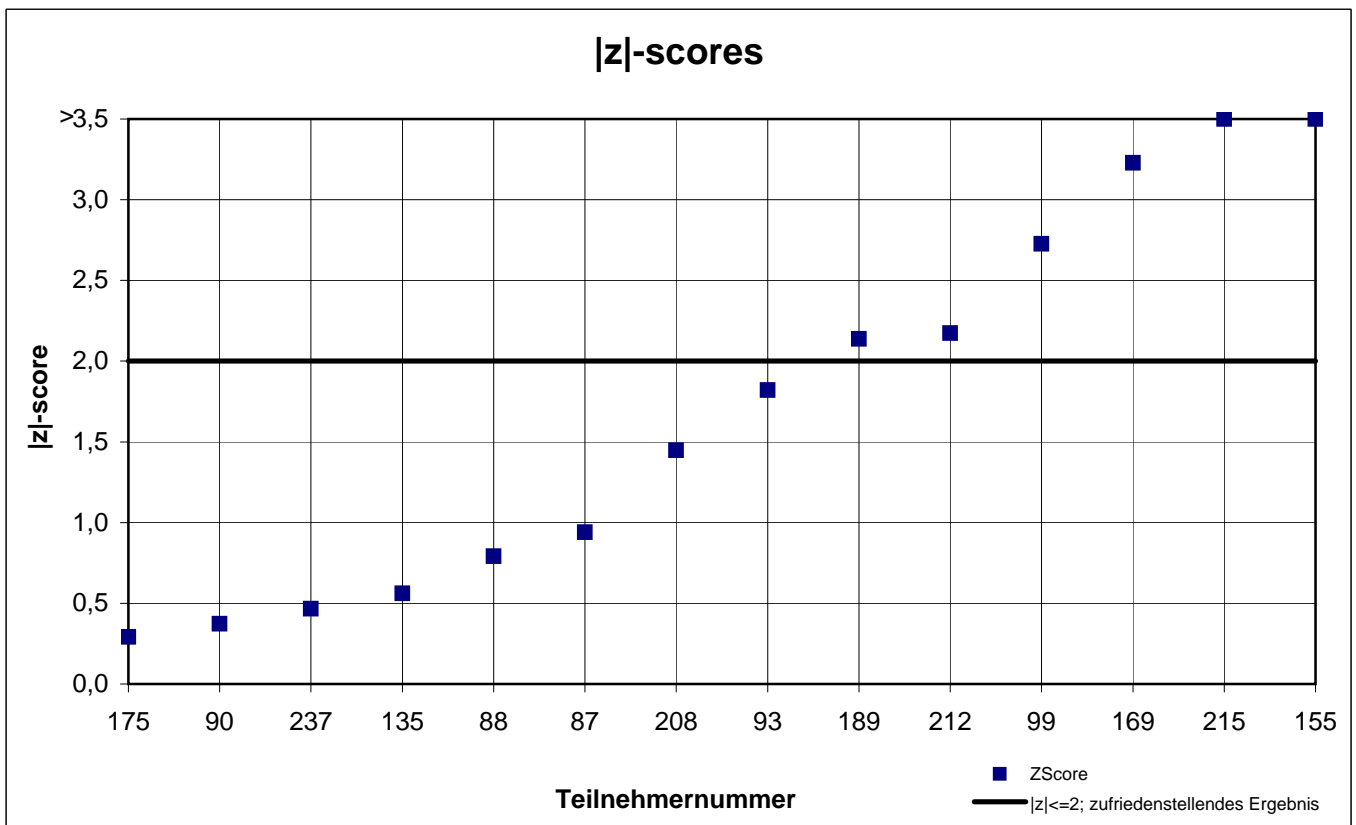
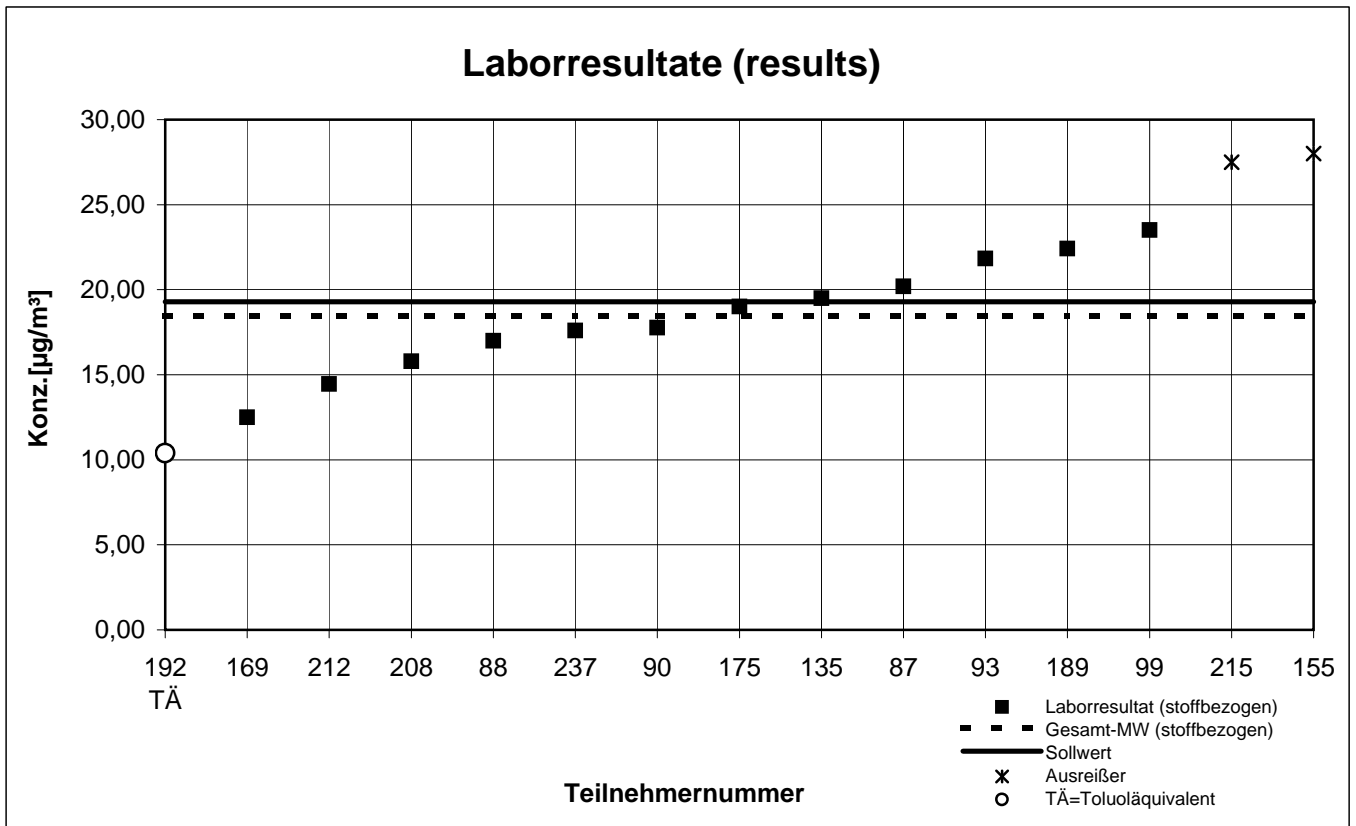
# Probe 1 (sample 1)

## 2-Butoxyethanol



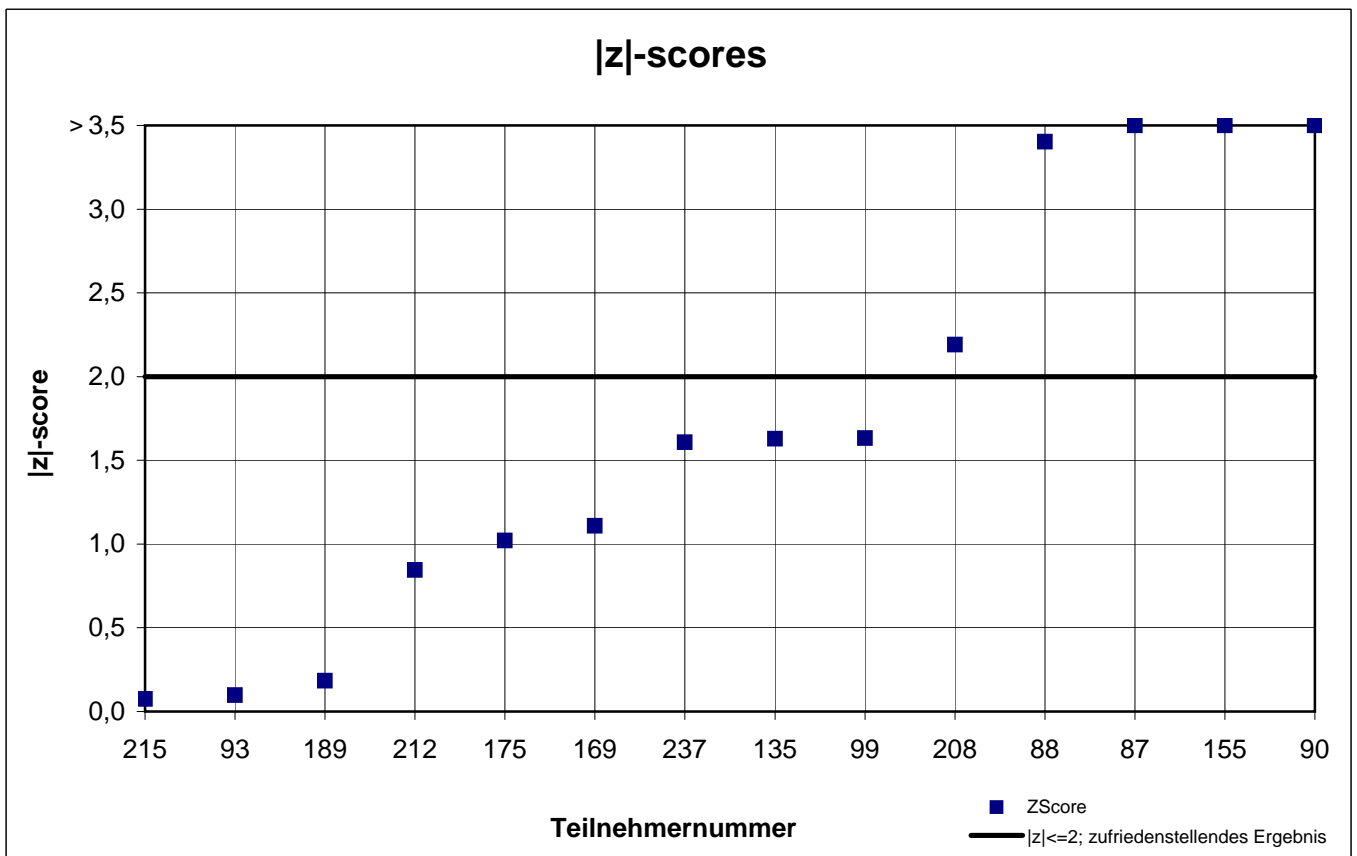
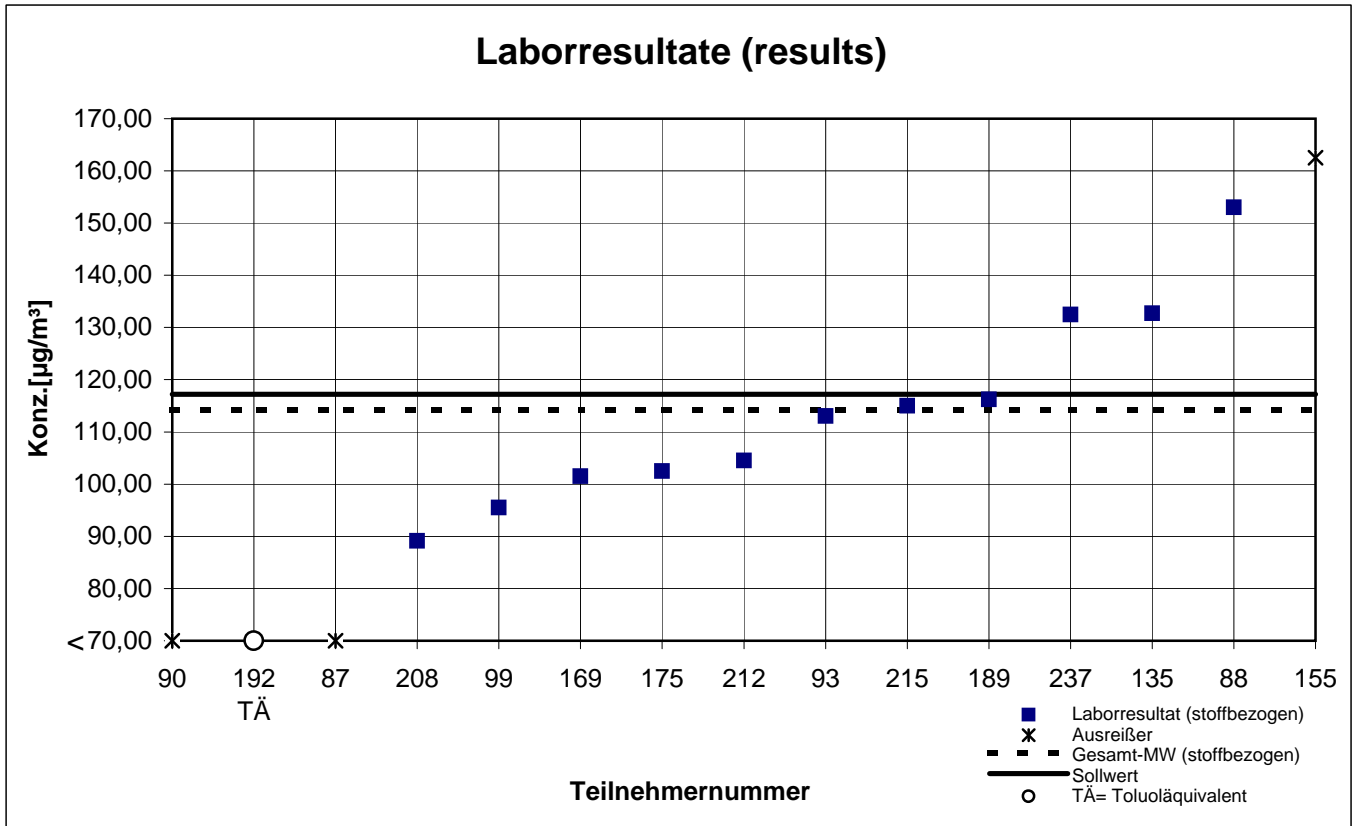
# Probe 1 (sample 1)

## Ethylhexanol



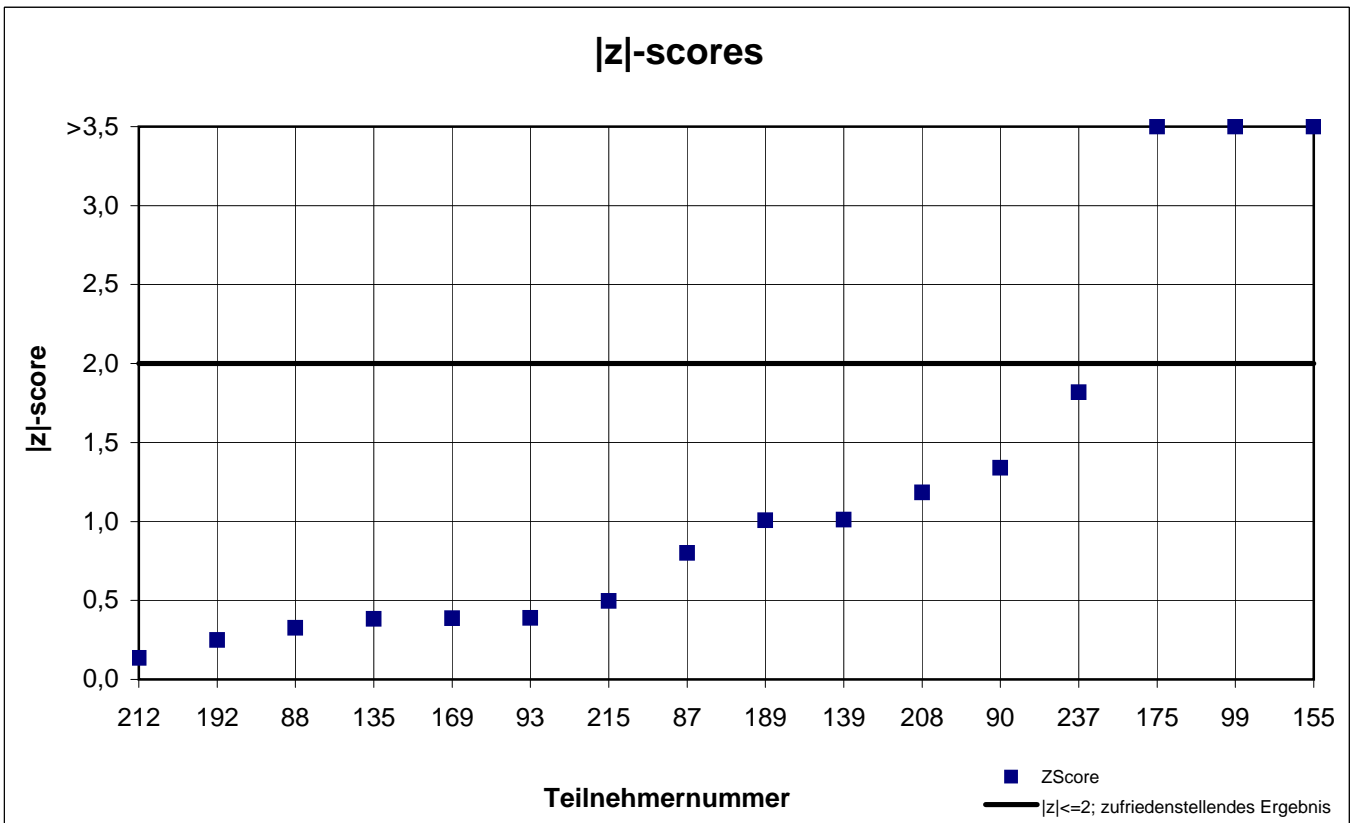
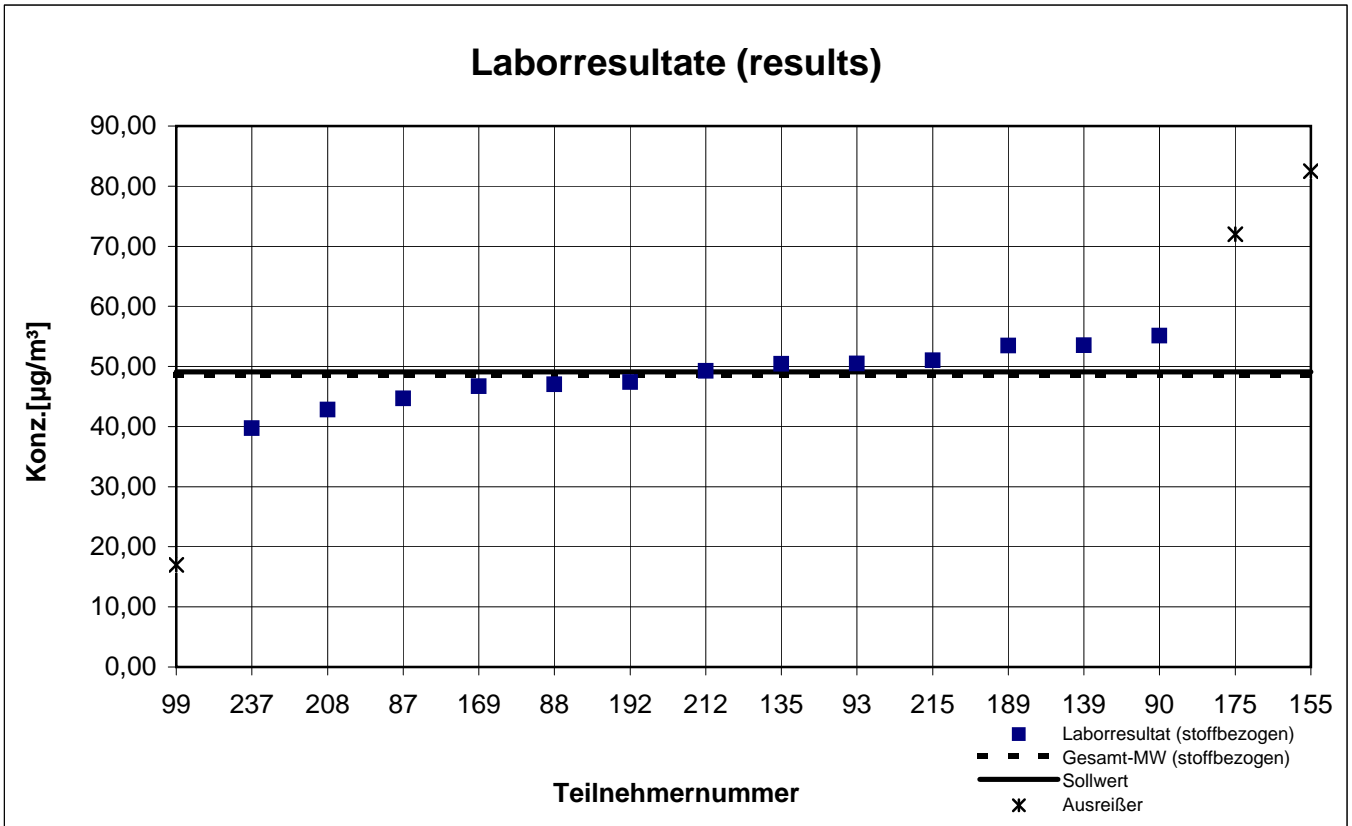
# Probe 1 (sample 1)

## 2-Phenoxyethanol



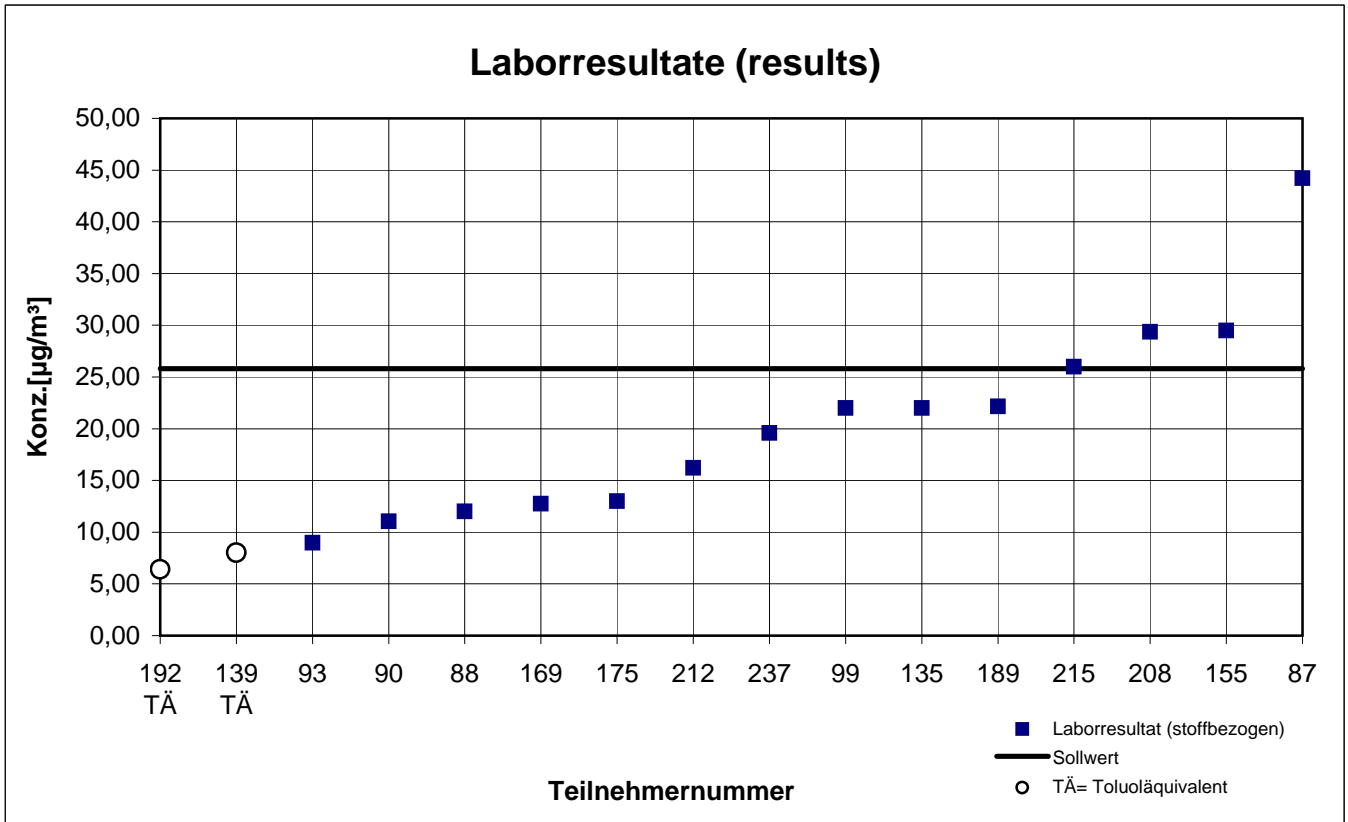
# Probe 1 (sample 1)

## Dodecan



# Probe 1 (sample 1)

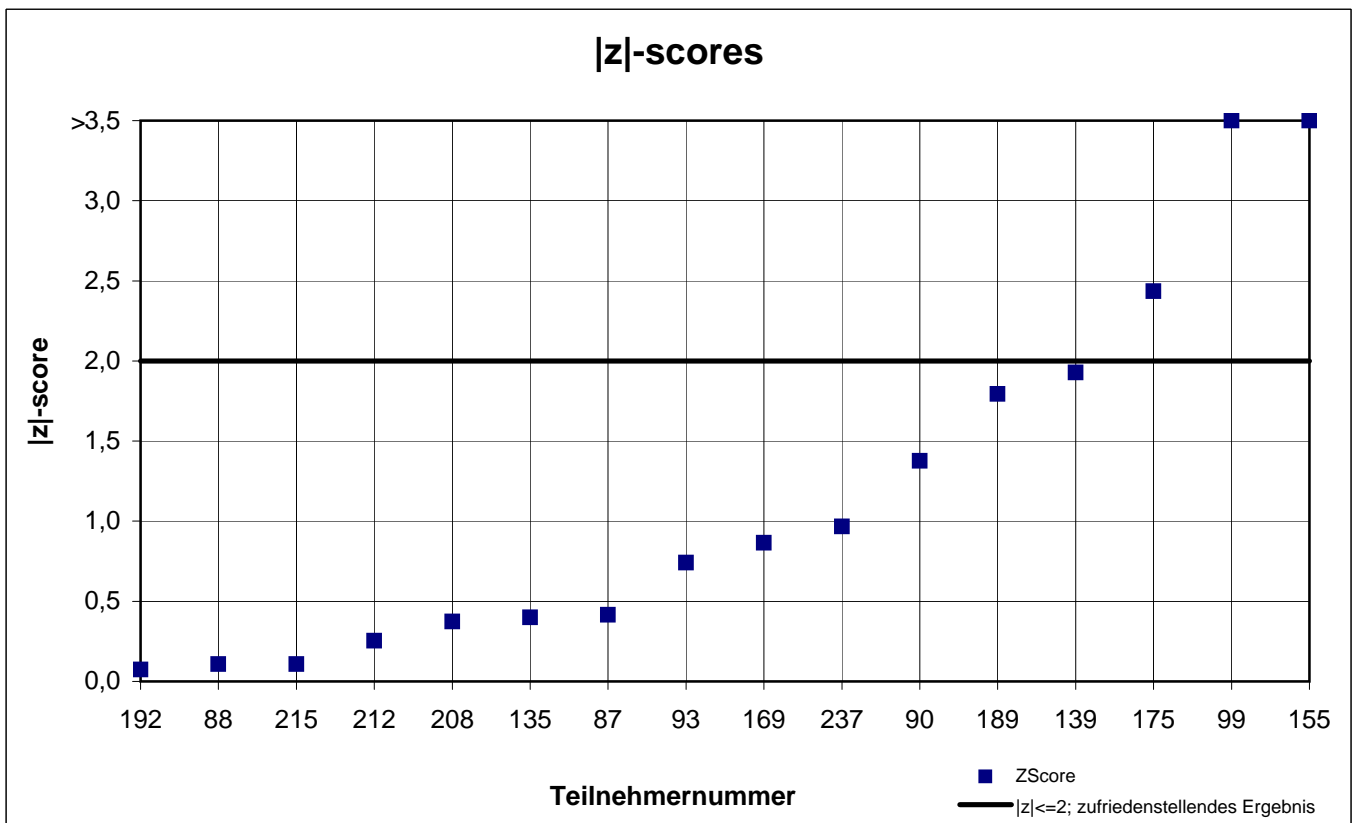
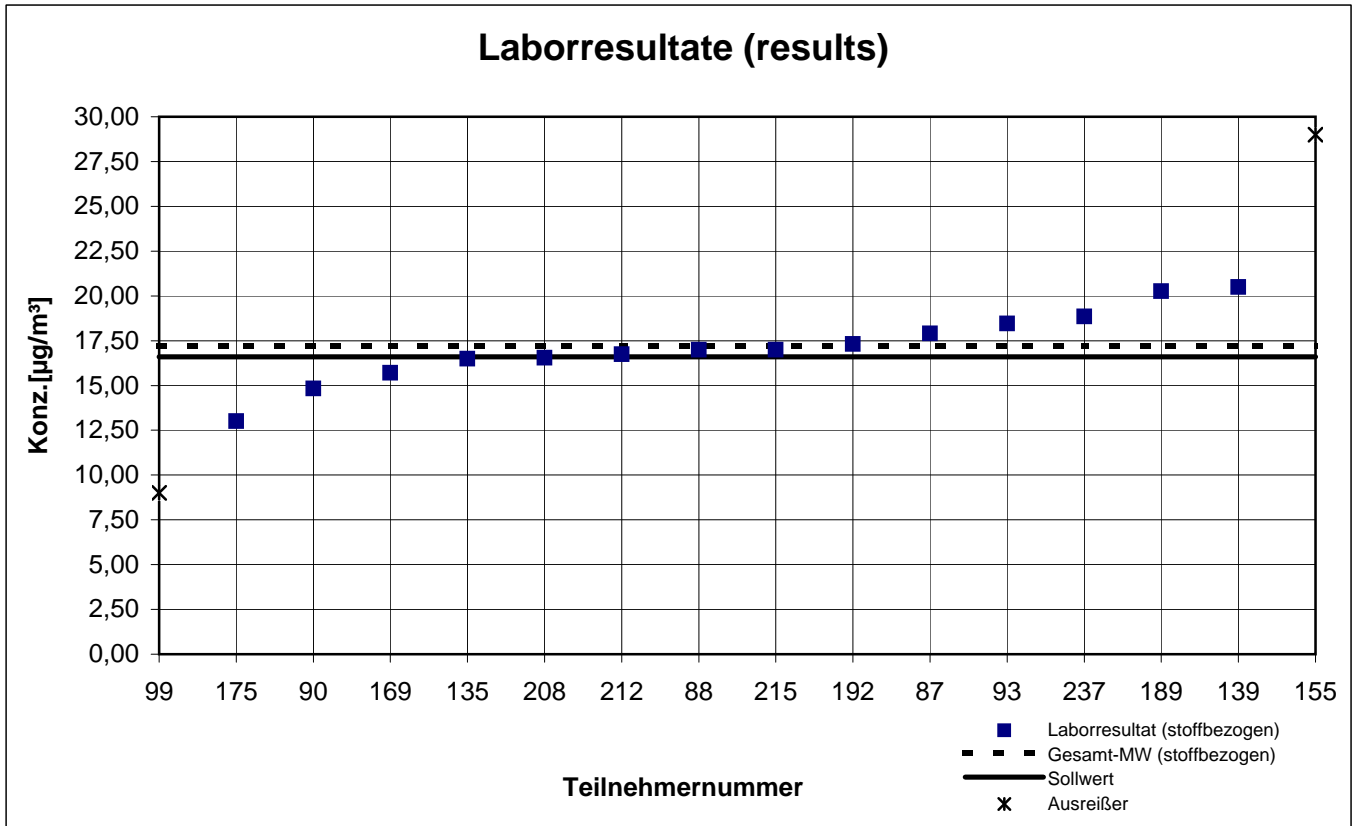
## Hexanal



**keine z-score-Auswertung  
no z-score evaluation**

# Probe 1 (sample 1)

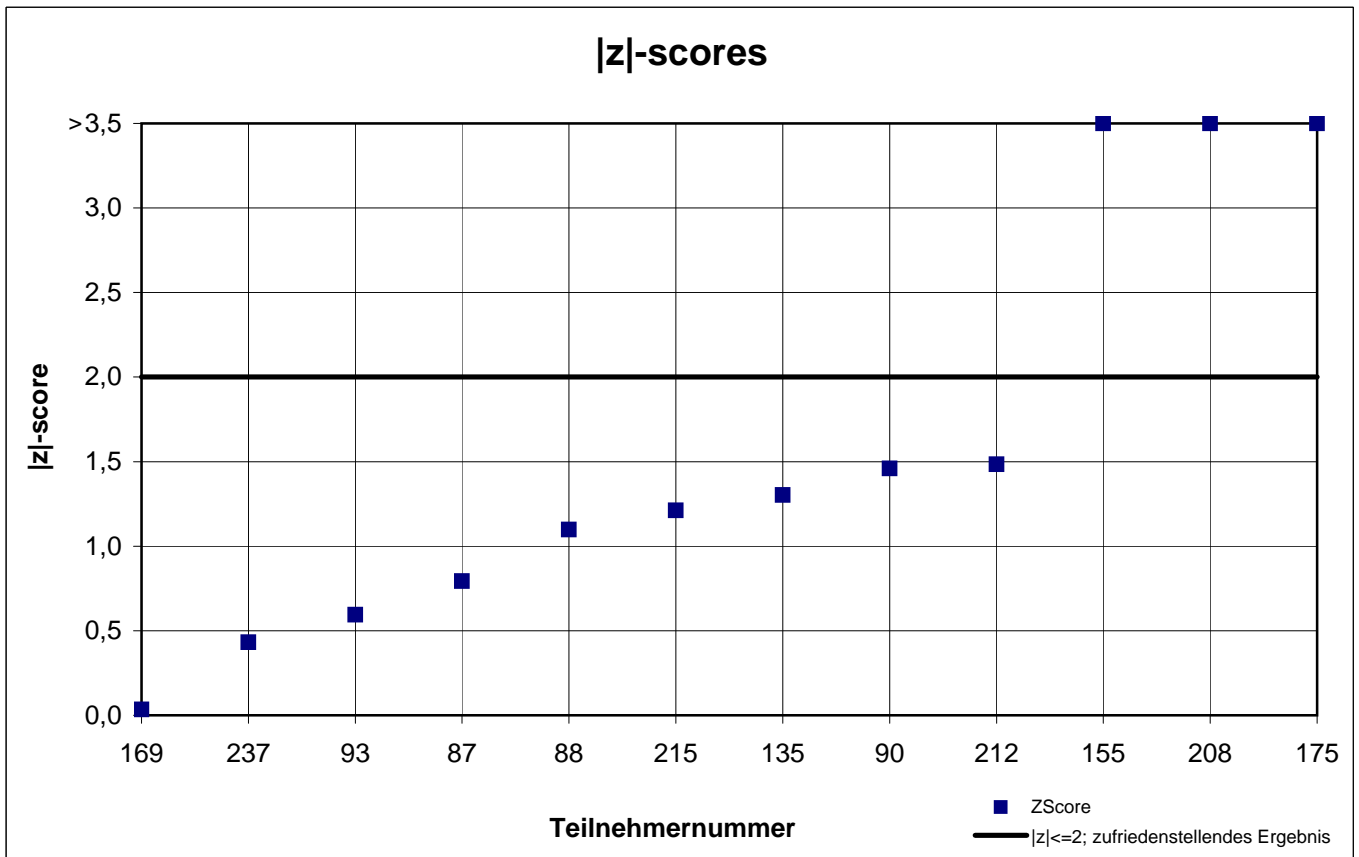
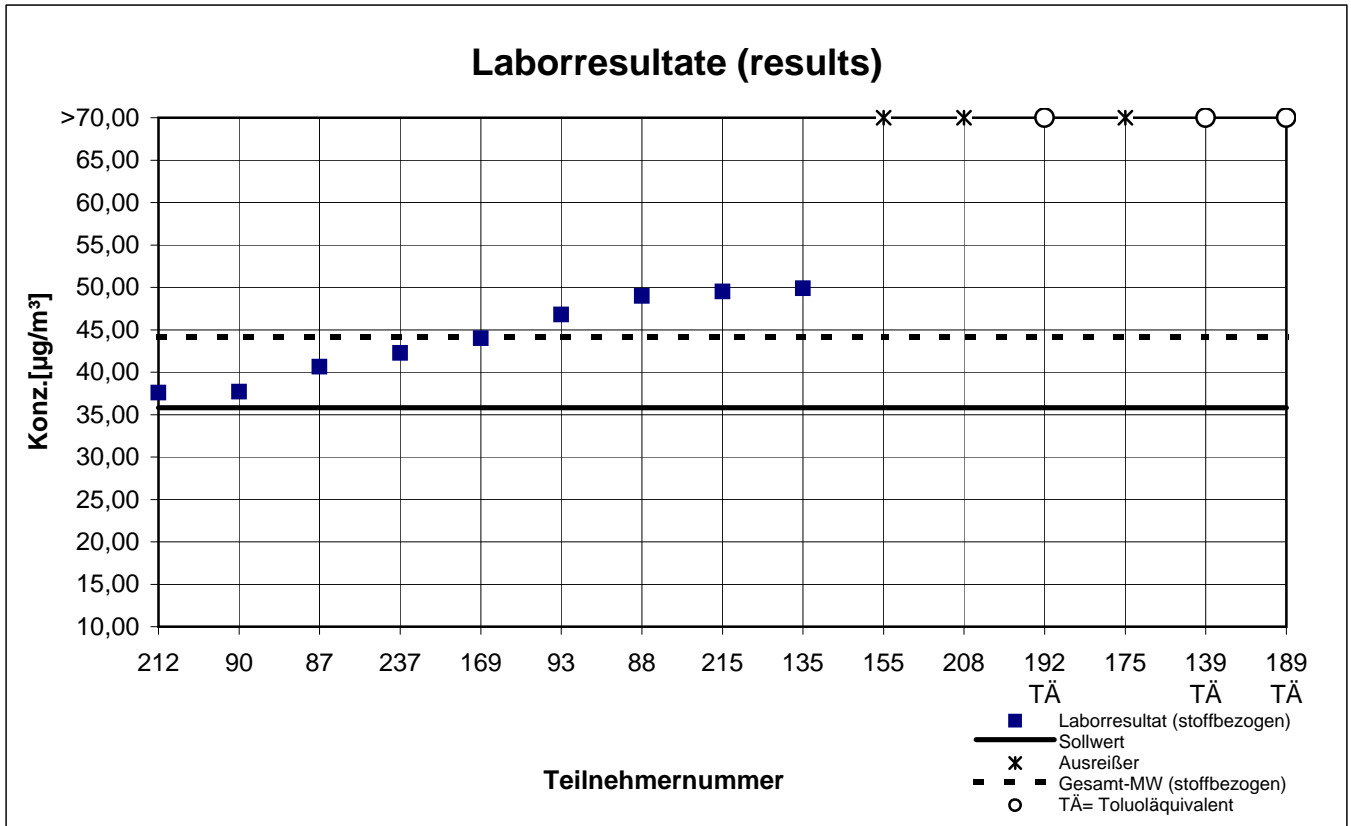
## n-Butylacetat





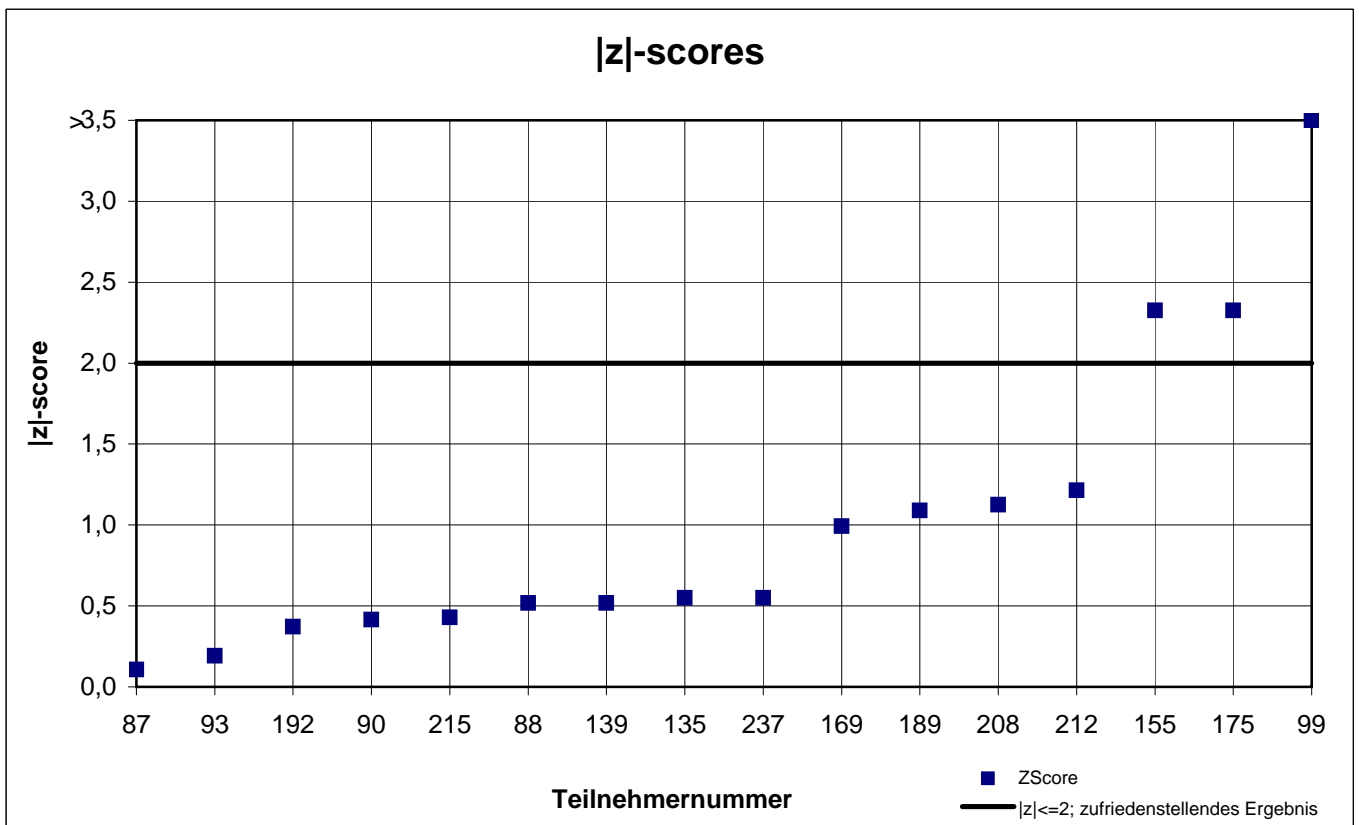
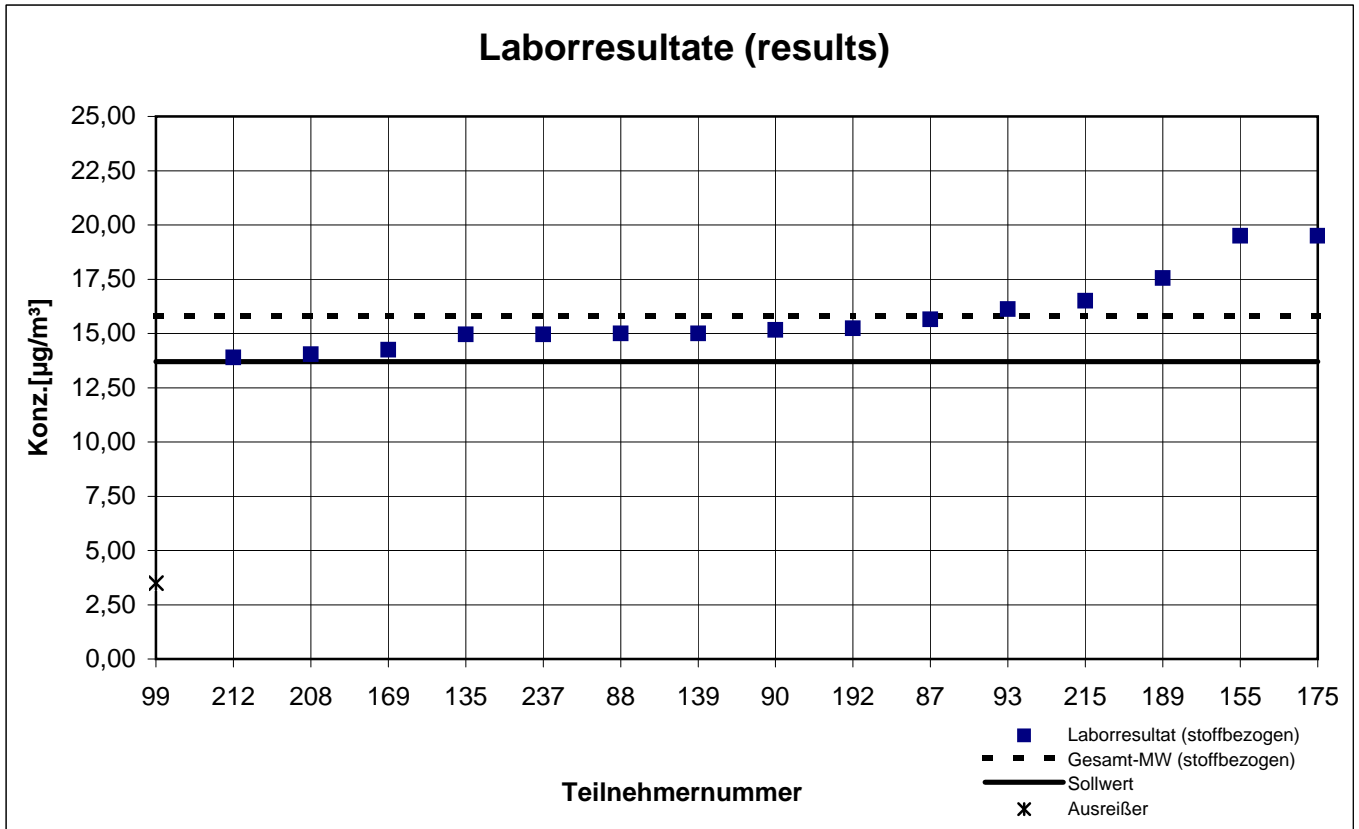
# Probe 1 (sample 1)

## Octamethylcyclotetrasiloxan



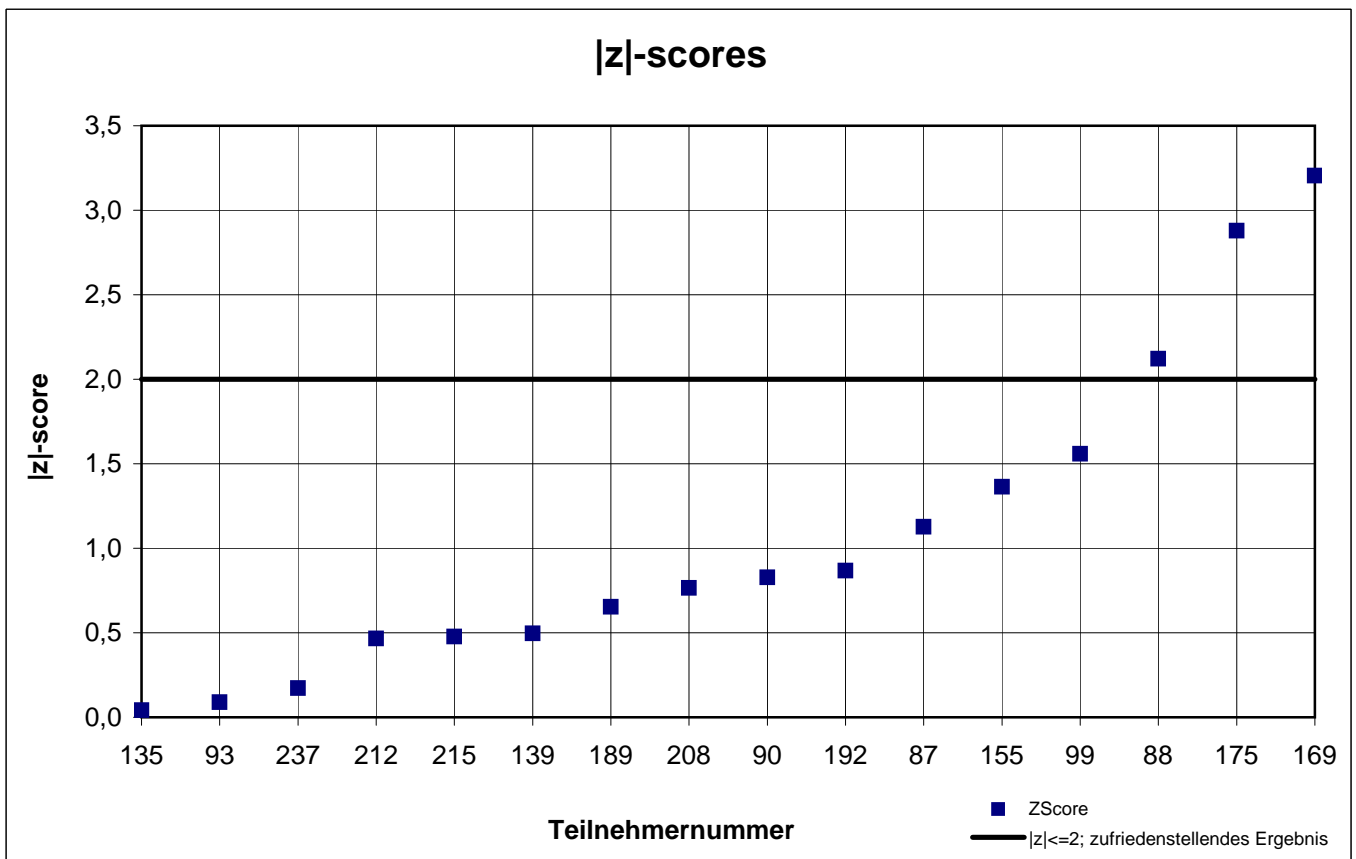
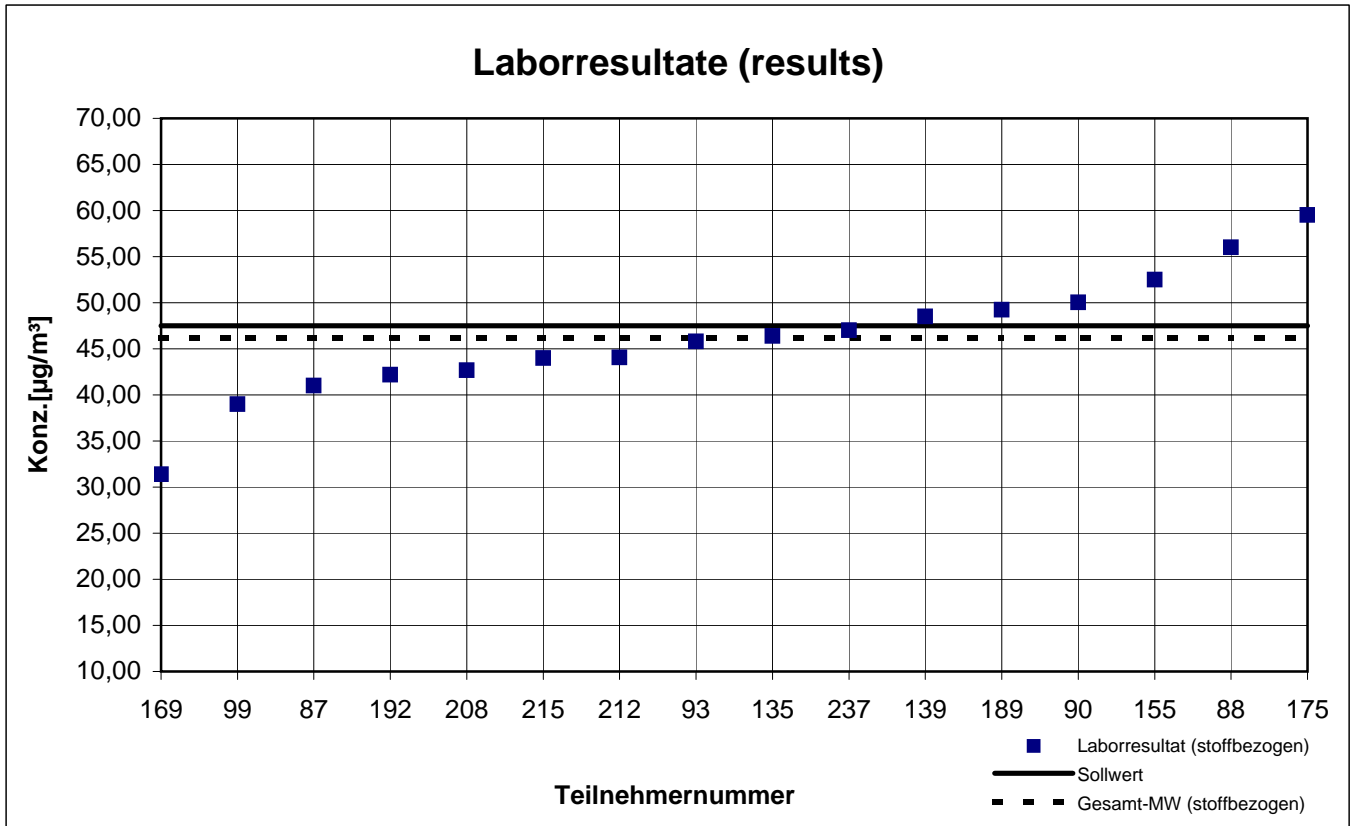
# Probe 1 (sample 1)

## p-Xylol



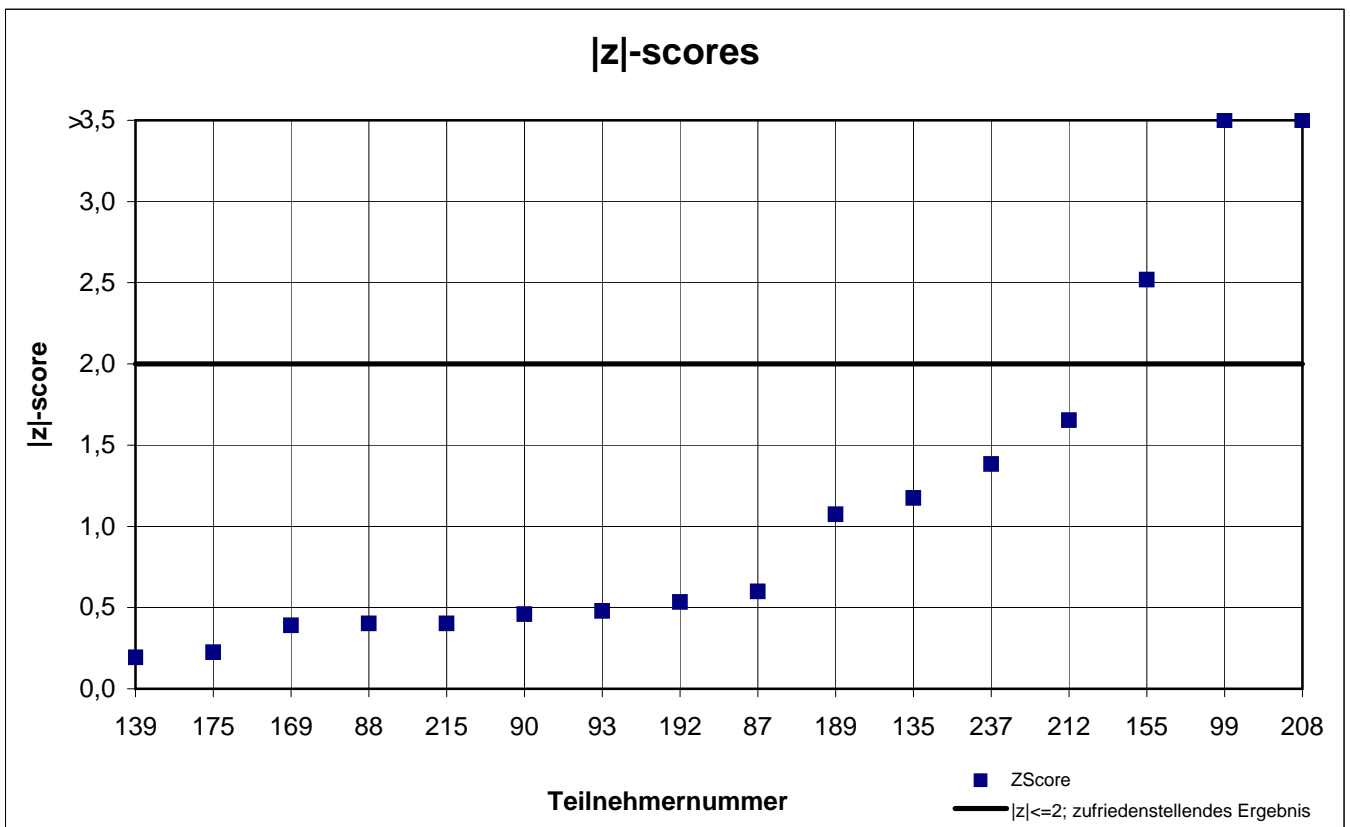
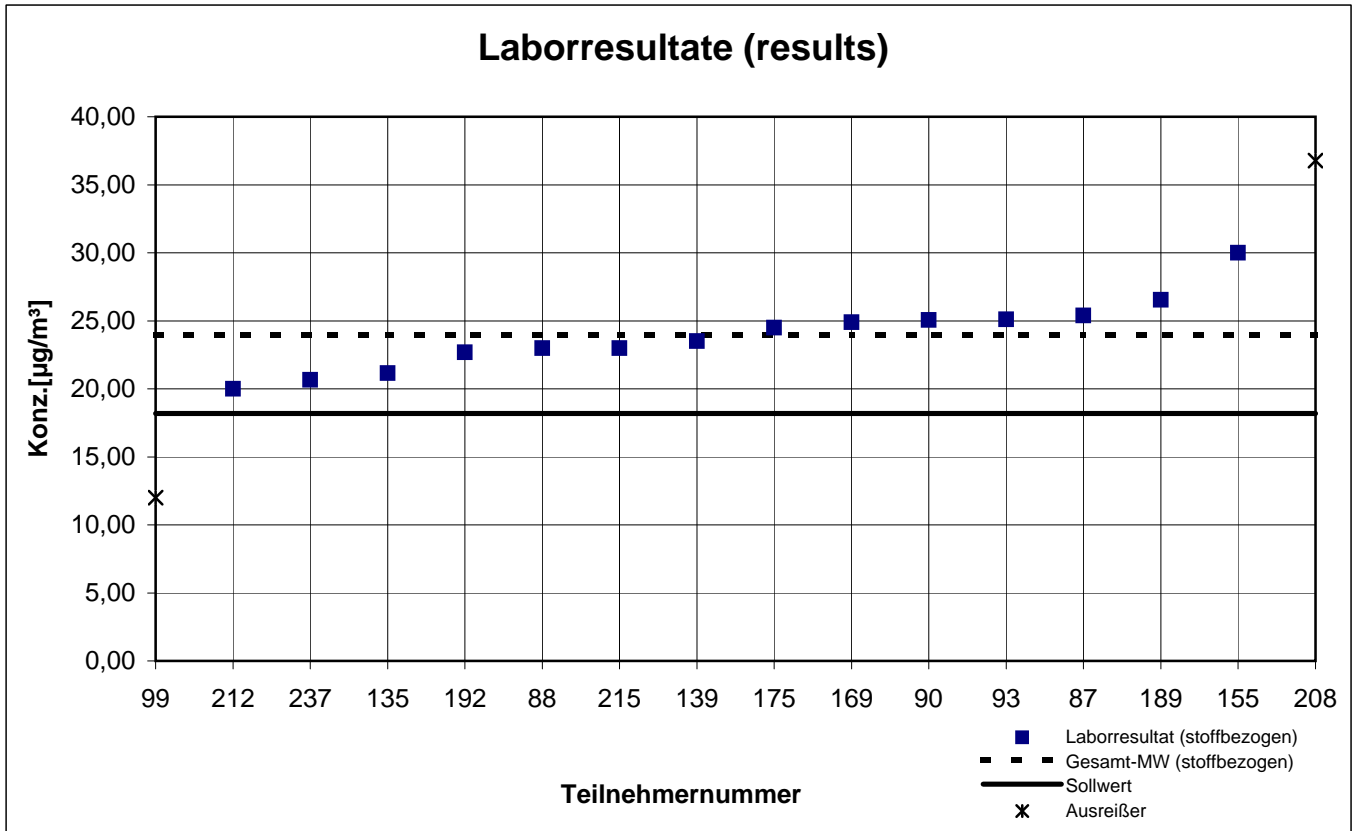
# Probe 1 (sample 1)

## R(+)-Limonen



# Probe 1 (sample 1)

## Toluol



## sample 2 - results (part 1)

participant number	2-Butoxyethanol		2-Ethylhexanol		2-Phenoxyethanol		Dodecane		Hexanal	
	result (µg / m³)	z  - score	result (µg / m³)	z  - score	result (µg / m³)	z  - score	result (µg / m³)	z  - score	result (µg / m³)	z  - score
87	27,70		22,85	1,0	57,80	4,3	34,65	0,6	60,65	
88	30,00		30,00	1,8	126,00	2,5	51,00	3,9	29,50	
90	27,38		28,32	1,2	78,41	2,2	41,50	1,3	27,65	
93	28,40		28,74	1,3	97,61	0,3	35,02	0,5	9,17	
99	8,50		23,00	0,9	89,50	1,1	10,00	7,3	25,00	
135	32,05		28,20	1,1	121,2	2,0	41,40	1,3	42,80	
139*	k.A.		k.A.	k.A.	k.A.	k.A.	36,00	0,2	13,00	
155	49,50		44,5	7,5	170,0	6,9	70,50	9,2	61,50	
169	19,25		19,40	2,4	94,60	0,6	36,75	0,0	31,40	
175	23,00		28,50	1,2	101,0	0,0	61,00	6,6	26,00	
189	32,02		29,73	1,7	90,78	1,0	41,77	1,4	45,26	
192	12,63		14,03		41,18		32,34	1,2	9,12	
208	26,28		20,54	1,9	79,08	2,2	32,05	1,3	45,68	
212	31,15		19,55	2,3	95,35	0,5	39,60	0,8	30,60	
215	33,50		28,00	1,0	109,0	0,8	38,50	0,5	25,50	
237	36,35		23,30	0,8	126,9	2,6	30,80	1,6	42,45	

marked

fields are outliers

\* on site sampling

Toluene equivalent

	2-Butoxy-ethanol	2-Ethyl-hexanol	2-Phenoxy-ethanol	Dodecane	Hexanal
mean $c_k$ [µg / m³]		25,39	100,8	36,70	
standard deviation $S_k$ [µg / m³]		4,024	16,731	3,879	
rel. standard deviation [%]		15,85	16,60	10,57	
"true result" [µg / m³]	30,50	28,00	105,3	39,10	46,80

## sample 2 - results (part 2)

participant number	n-Butyl acetate		Octamethylcyclo-tetrasiloxane		p-Xylene		R(+)-Limonene		Toluene	
	result (µg / m³)	z  - score	result (µg / m³)	z  - score	result (µg / m³)	z  - score	result (µg / m³)	z  - score	result (µg / m³)	z  - score
87	35,05	0,0	36,90	1,1	27,70	0,8	28,55	1,9	41,60	0,9
88	40,00	1,4	50,50	2,1	34,50	1,4	45,50	2,9	44,50	0,2
90	34,43	0,2	36,82	1,2	30,51	0,1	38,98	1,0	46,15	0,1
93	35,94	0,2	41,46	0,0	30,28	0,0	32,22	0,9	45,62	0,0
99	19,50	4,5	k.A.	k.A.	13,00	5,7	36,00	0,2	24,00	4,7
135	37,25	0,6	43,05	0,3	31,40	0,4	38,65	0,9	45,10	0,1
139*	33,00	0,6	98,50	13,7	24,00	2,1	30,00	1,5	39,00	1,4
155	67,50	9,2	80,00	9,2	45,50	5,0	44,00	2,4	66,50	4,6
169	32,70	0,7	43,45	0,4	30,85	0,2	30,25	1,4	49,40	0,9
175	27,50	2,2	99,50	13,9	42,00	3,9	51,00	4,4	53,00	1,6
189	37,69	0,7	131,70	21,6	35,46	1,7	38,35	0,8	51,58	1,3
192	37,95	0,8	78,80	8,9	32,99	0,9	30,71	1,3	47,57	0,5
208	33,75	0,4	67,80	6,3	27,97	0,8	33,40	0,6	43,20	0,5
212	33,75	0,4	37,20	1,1	28,55	0,6	35,30	0,0	41,45	0,9
215	34,00	0,3	41,00	0,2	28,00	0,7	29,50	1,7	44,50	0,2
237	39,60	1,3	44,25	0,6	30,90	0,2	39,20	1,1	44,45	0,2

marked

fields are outliers

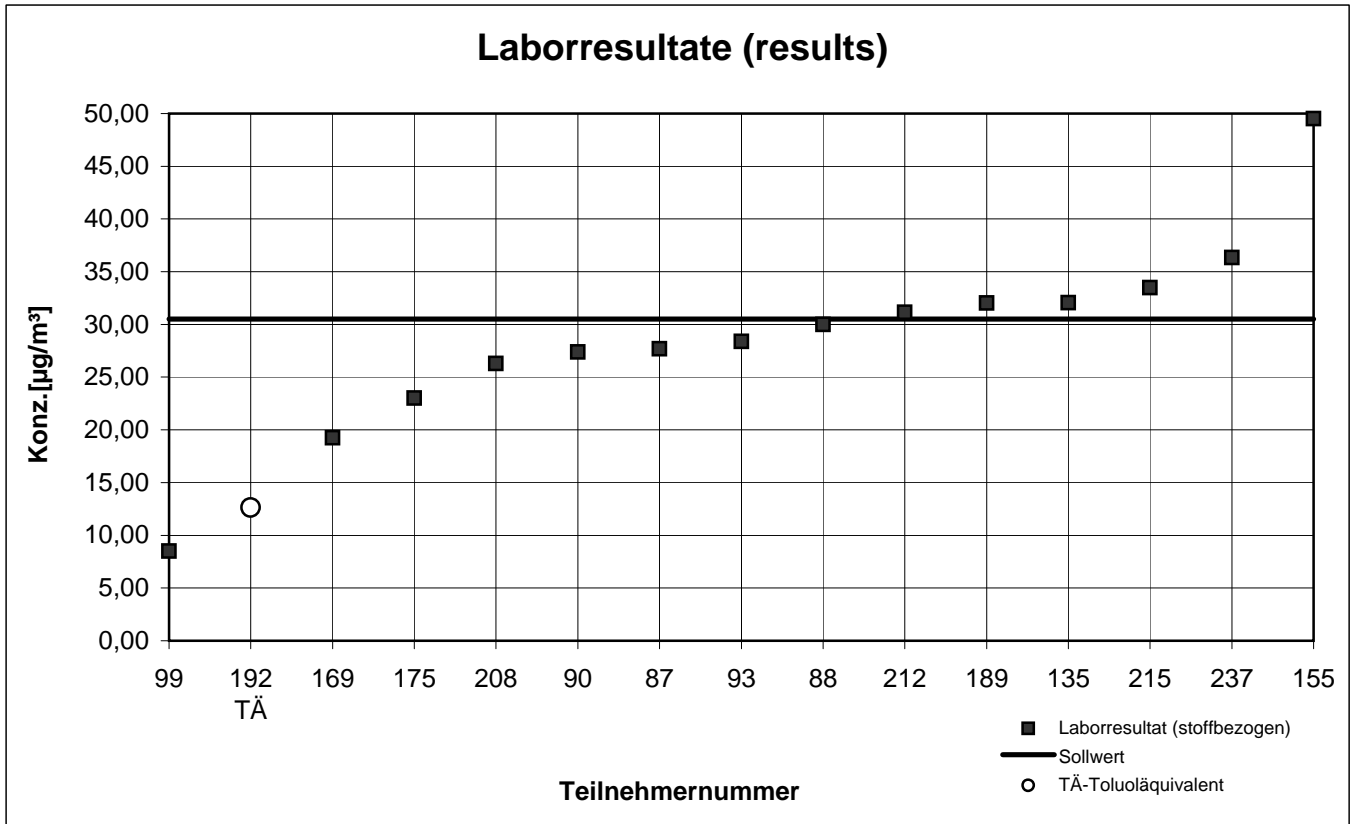
\* on site sampling

Toluene equivalent

	n-Butyl acetate	OMCTS	p-Xylene	R(+)-Limonene	Toluene
mean $c_k$ [µg / m³]	35,19	41,63	30,24	35,37	45,51
standard deviation $S_k$ [µg / m³]	3,253	4,422	3,077	5,322	3,879
rel. standard deviation [%]	9,24	10,62	10,18	15,04	8,52
"true result" [µg / m³]	33,90	34,80	28,10	37,70	36,60

# Probe 2 (sample 2)

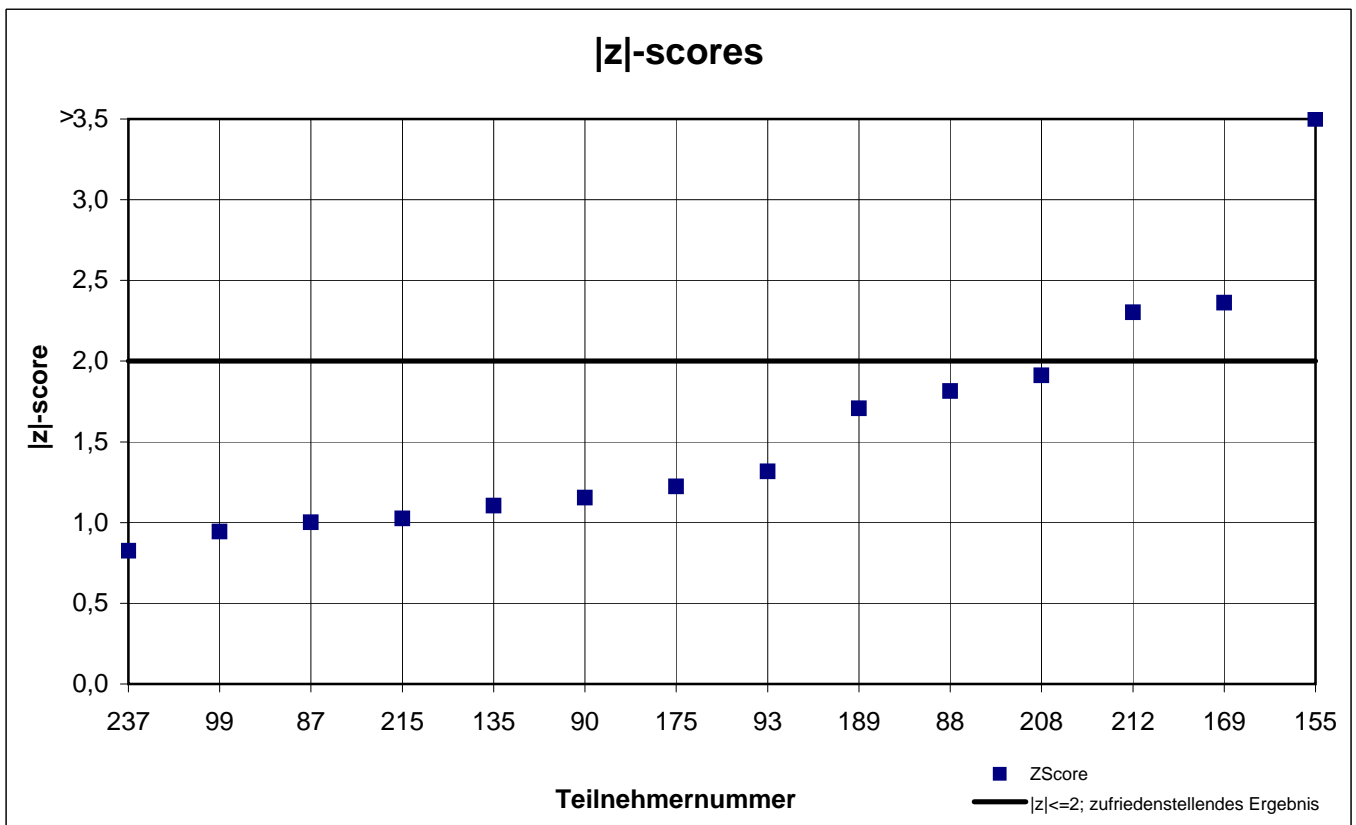
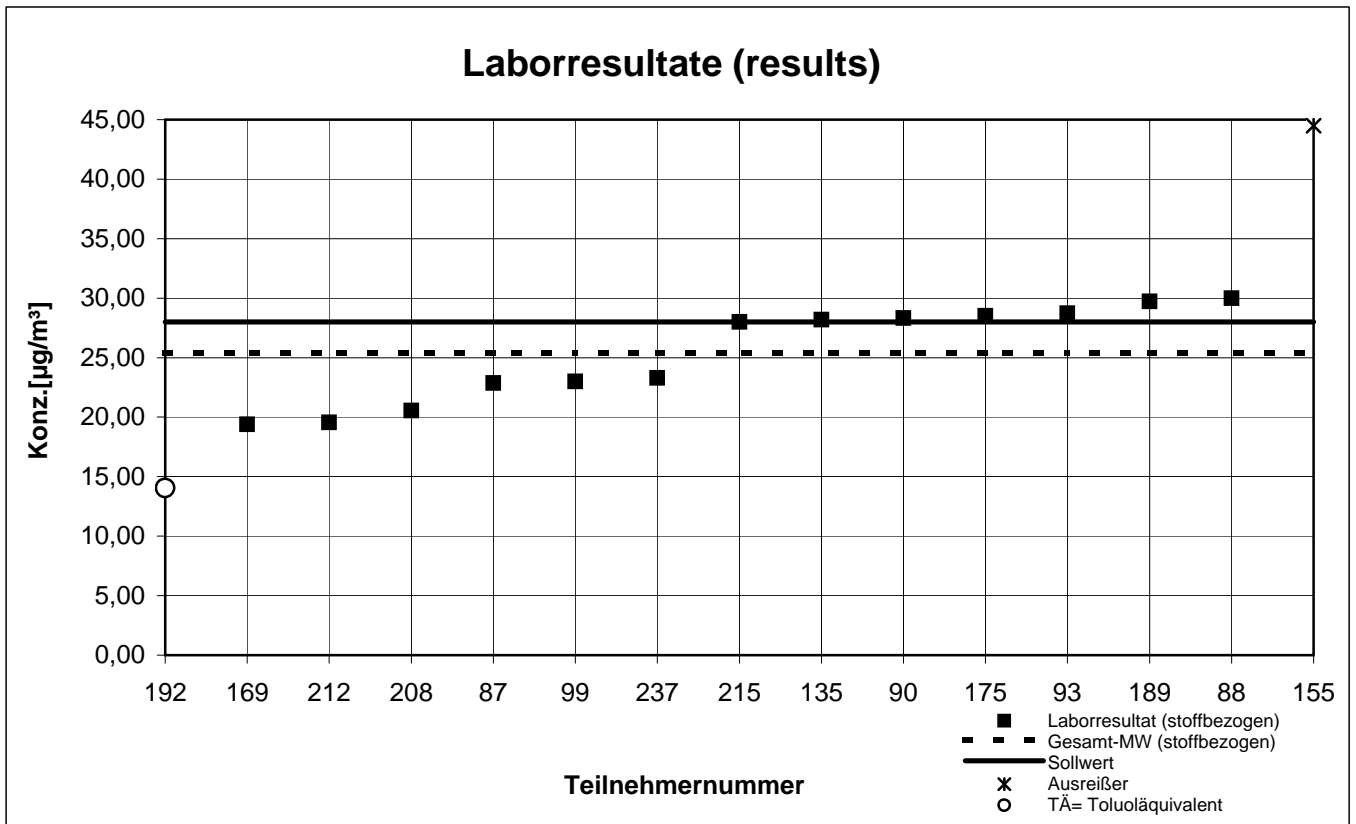
## 2-Butoxyethanol



keine z-score-Auswertung  
no z-score evaluation

# Probe 2 (sample 2)

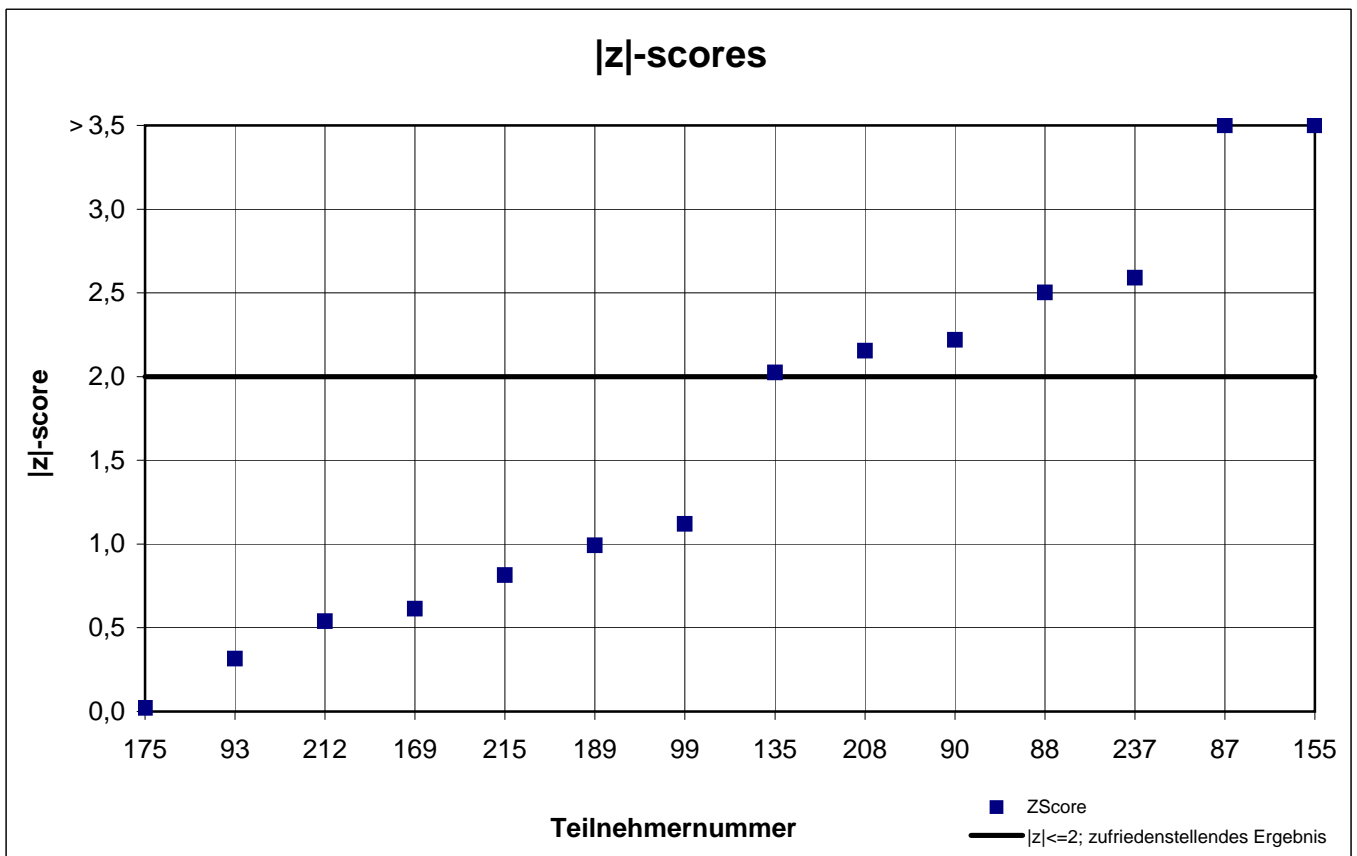
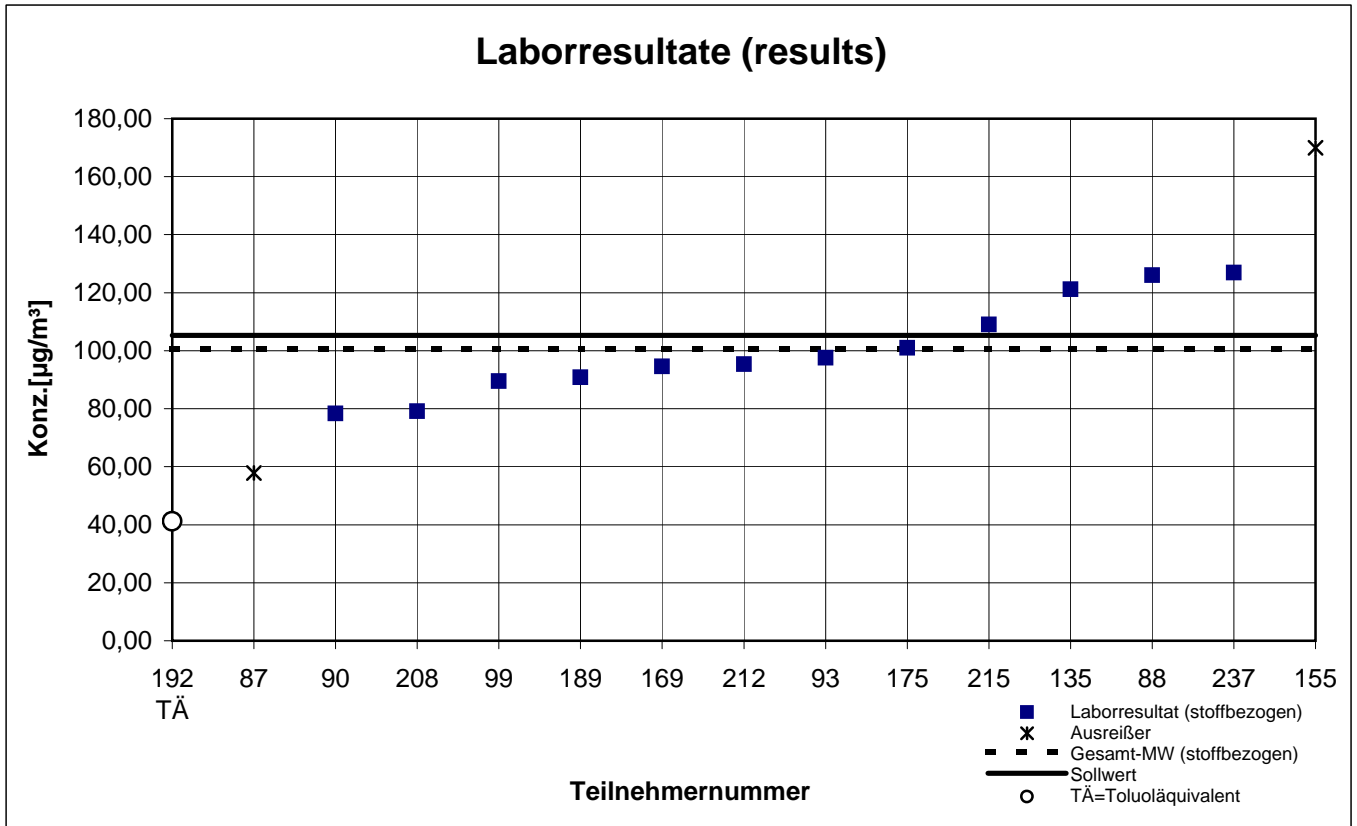
## Ethylhexanol





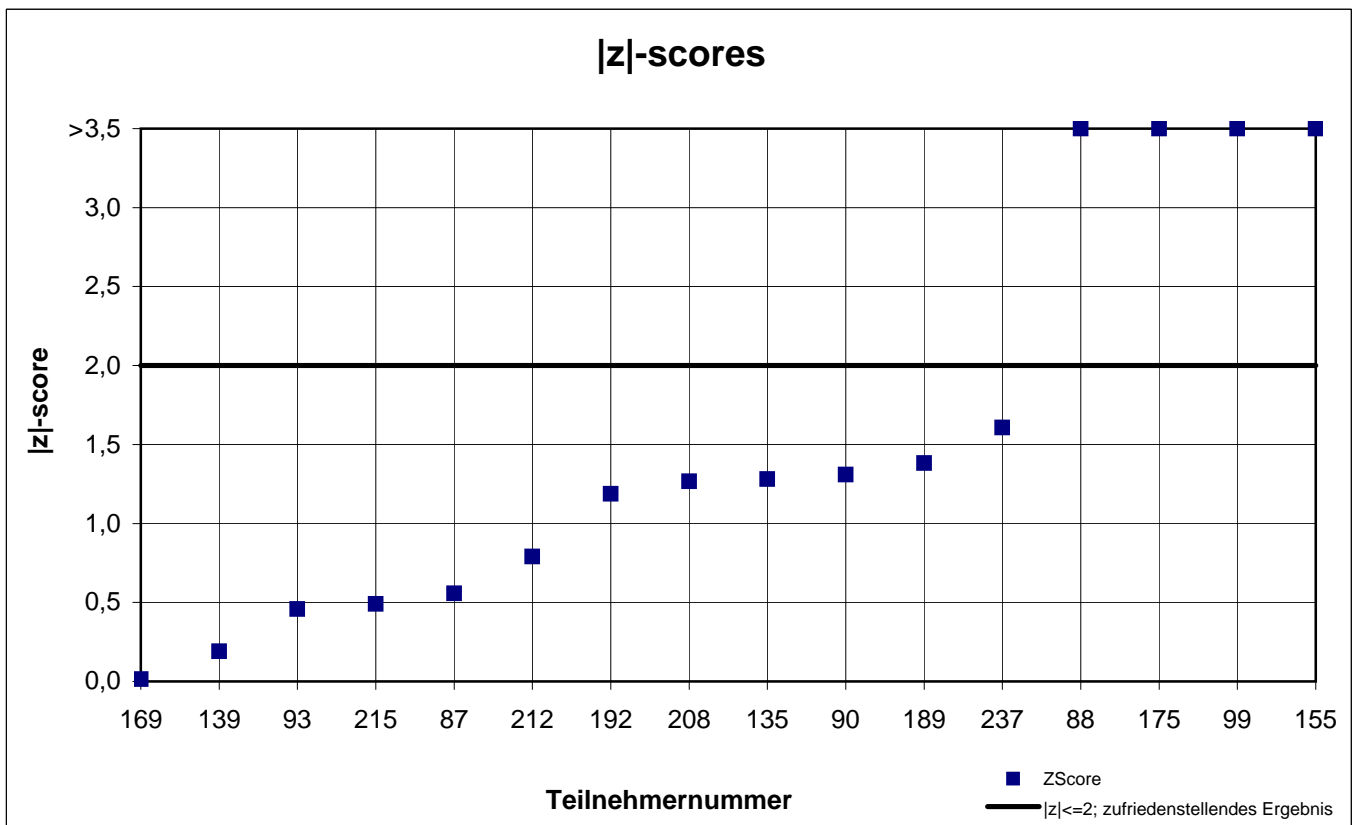
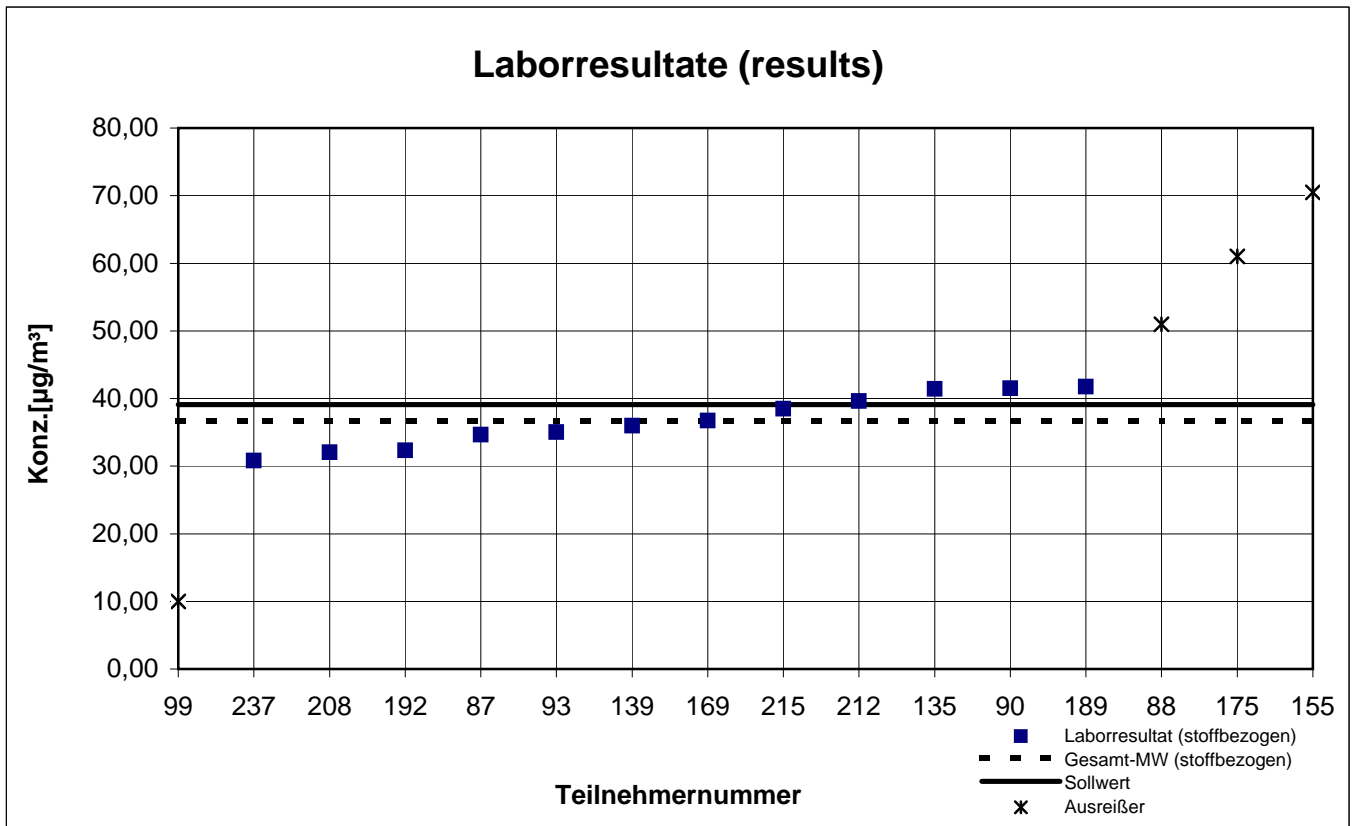
# Probe 2 (sample 2)

## 2-Phenoxyethanol



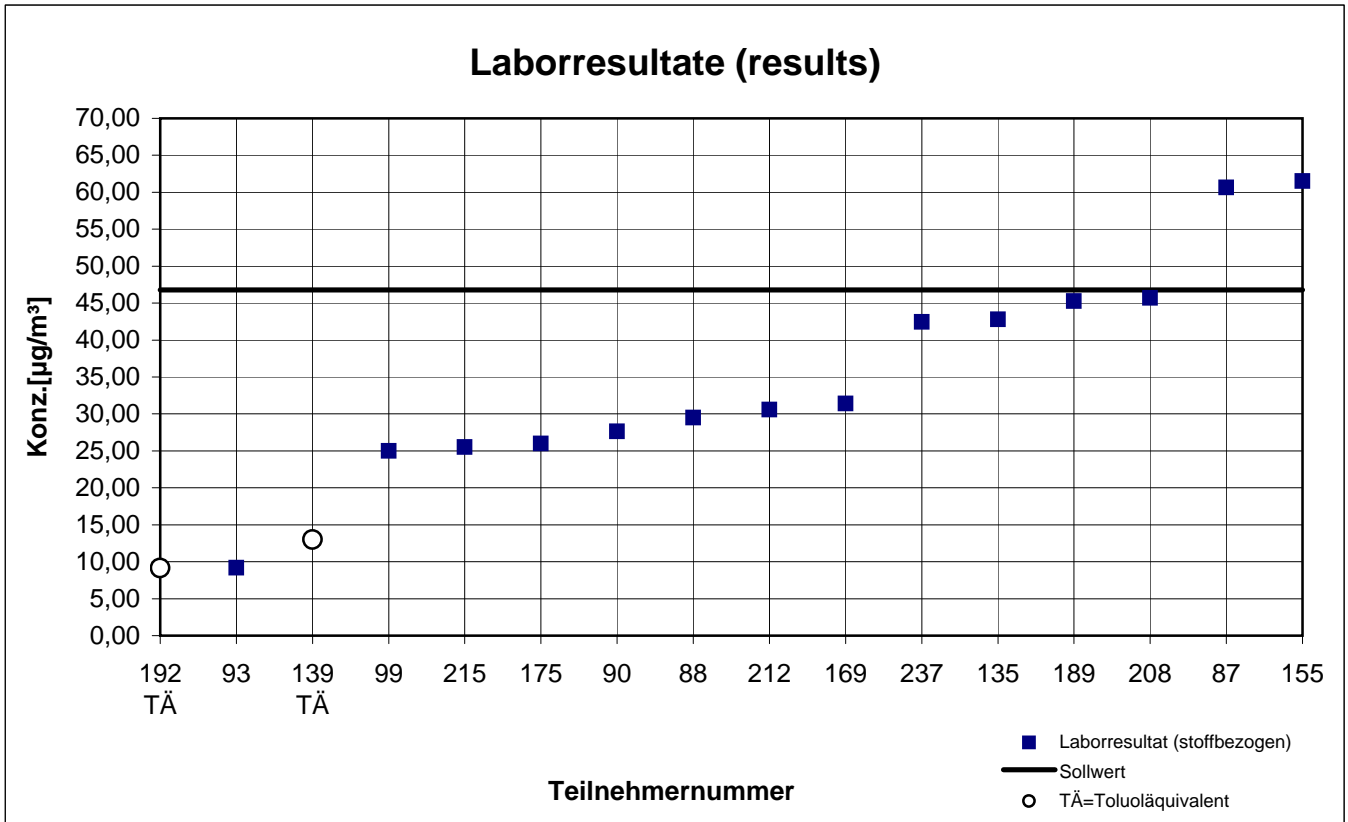
# Probe 2 (sample 2)

## Dodecan



# Probe 2 (sample 2)

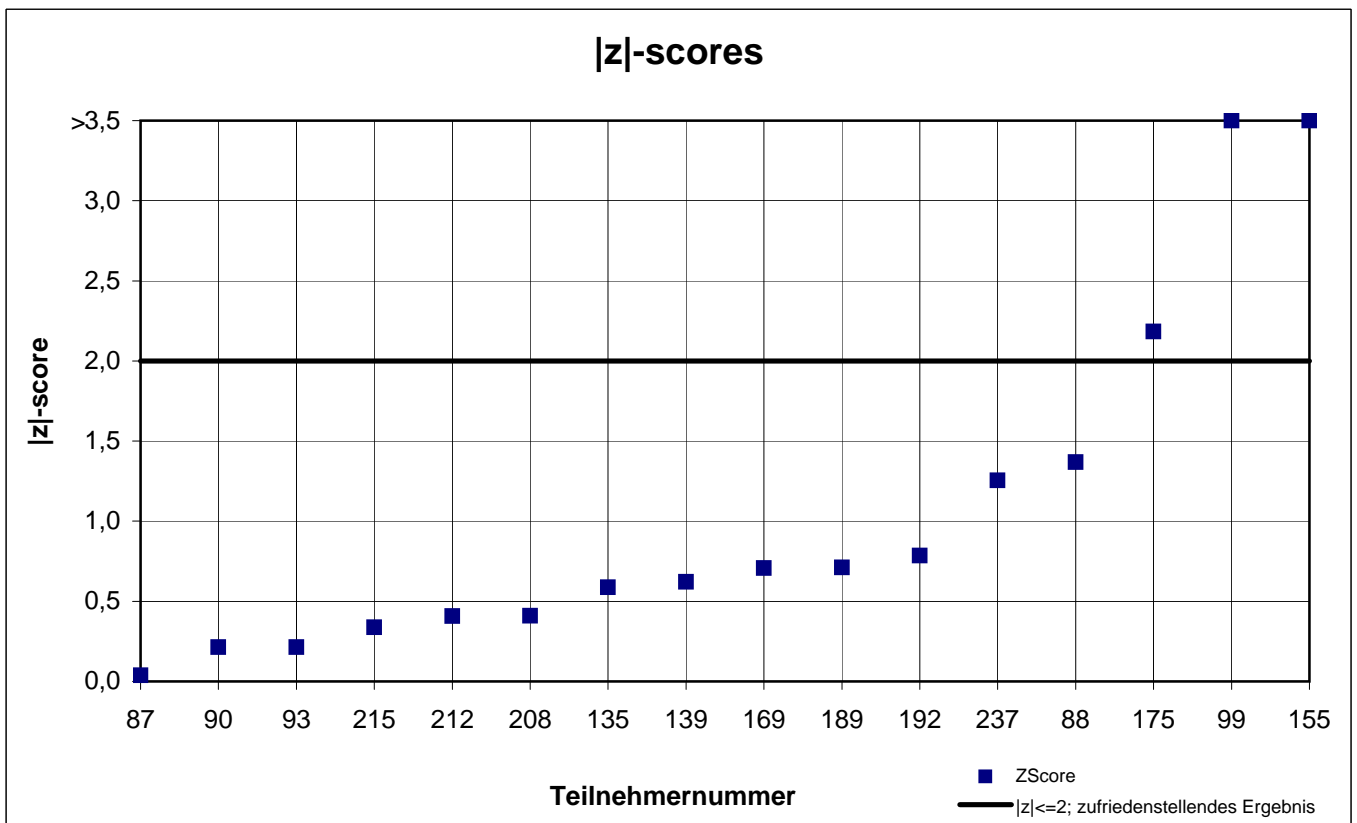
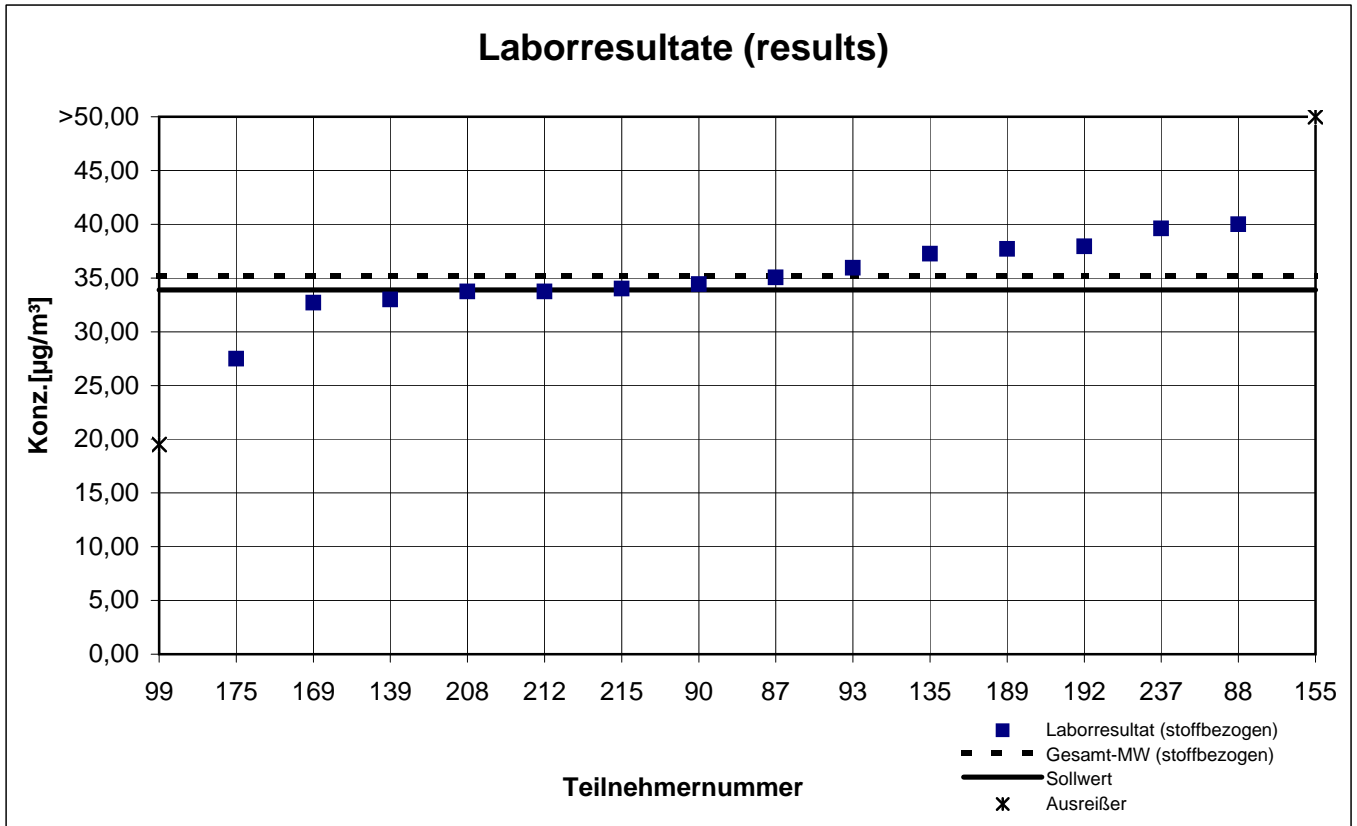
## Hexanal



**keine z-score-Auswertung  
no z-score evaluation**

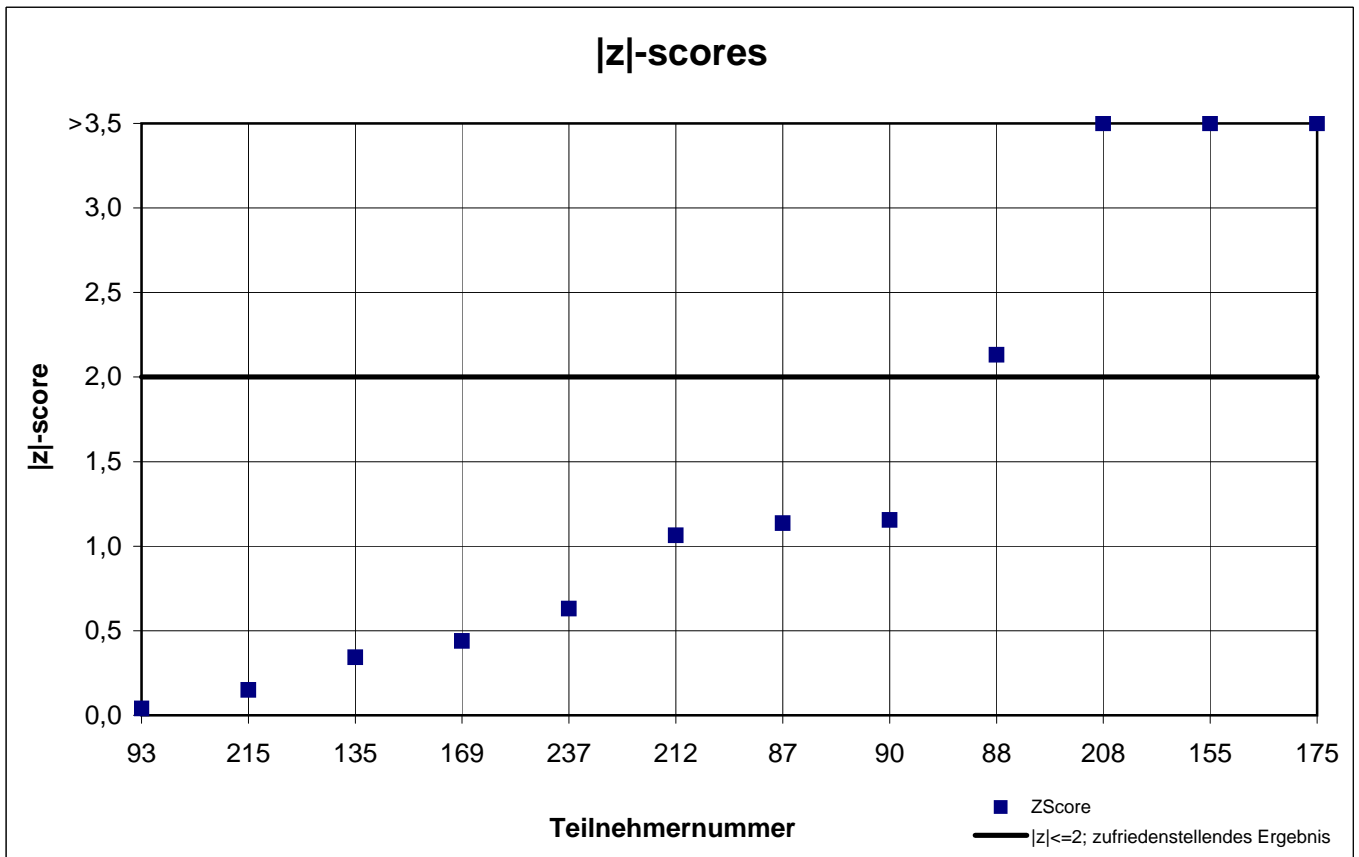
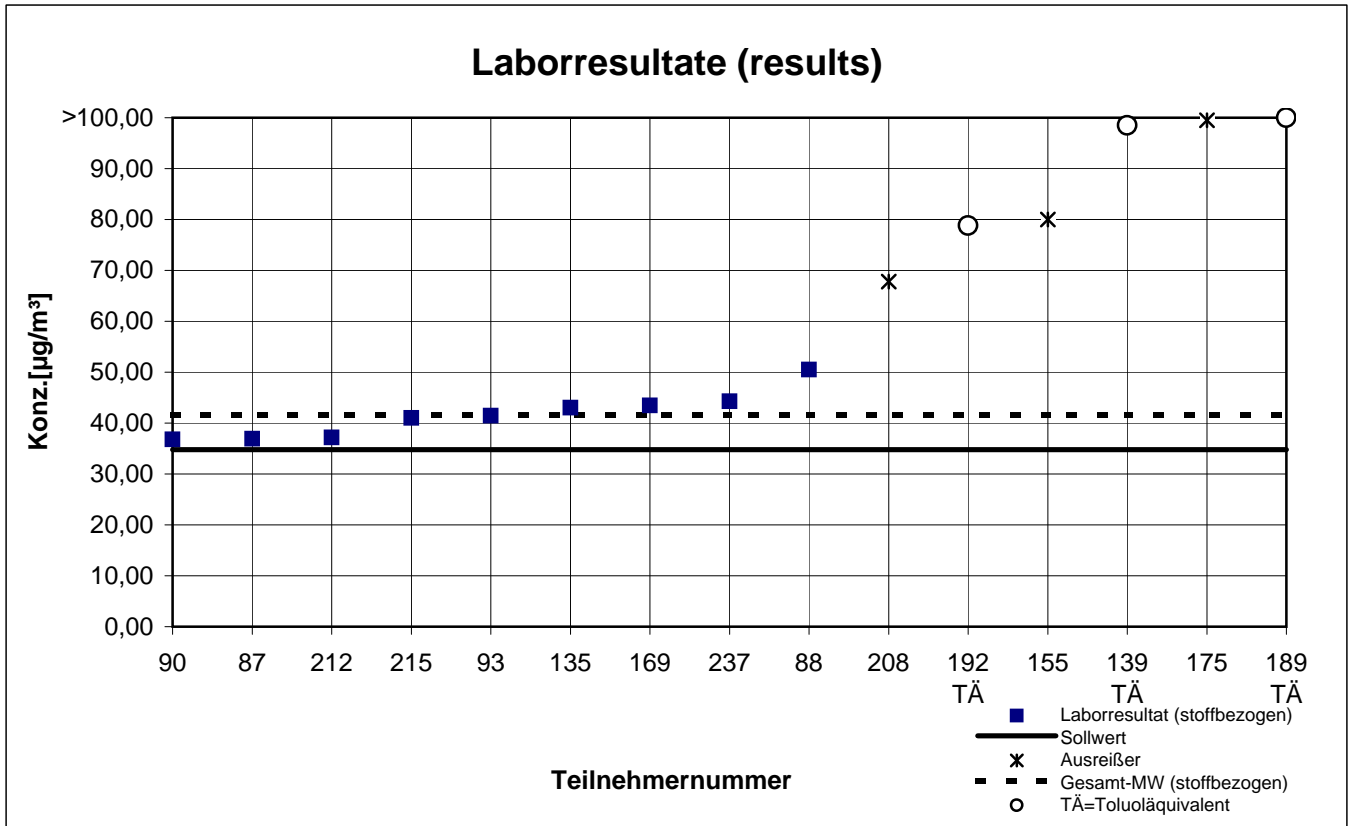
# Probe 2 (sample 2)

## n-Butylacetat



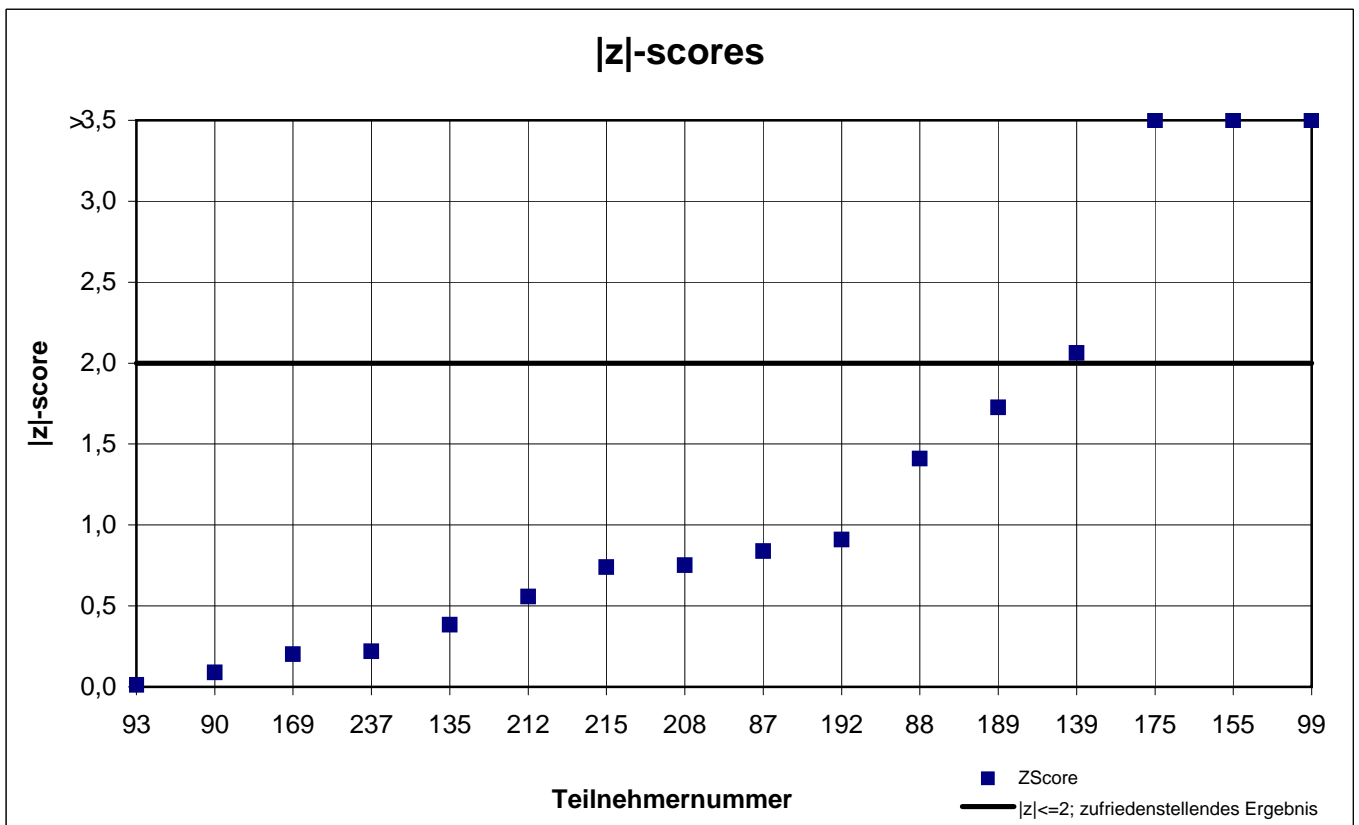
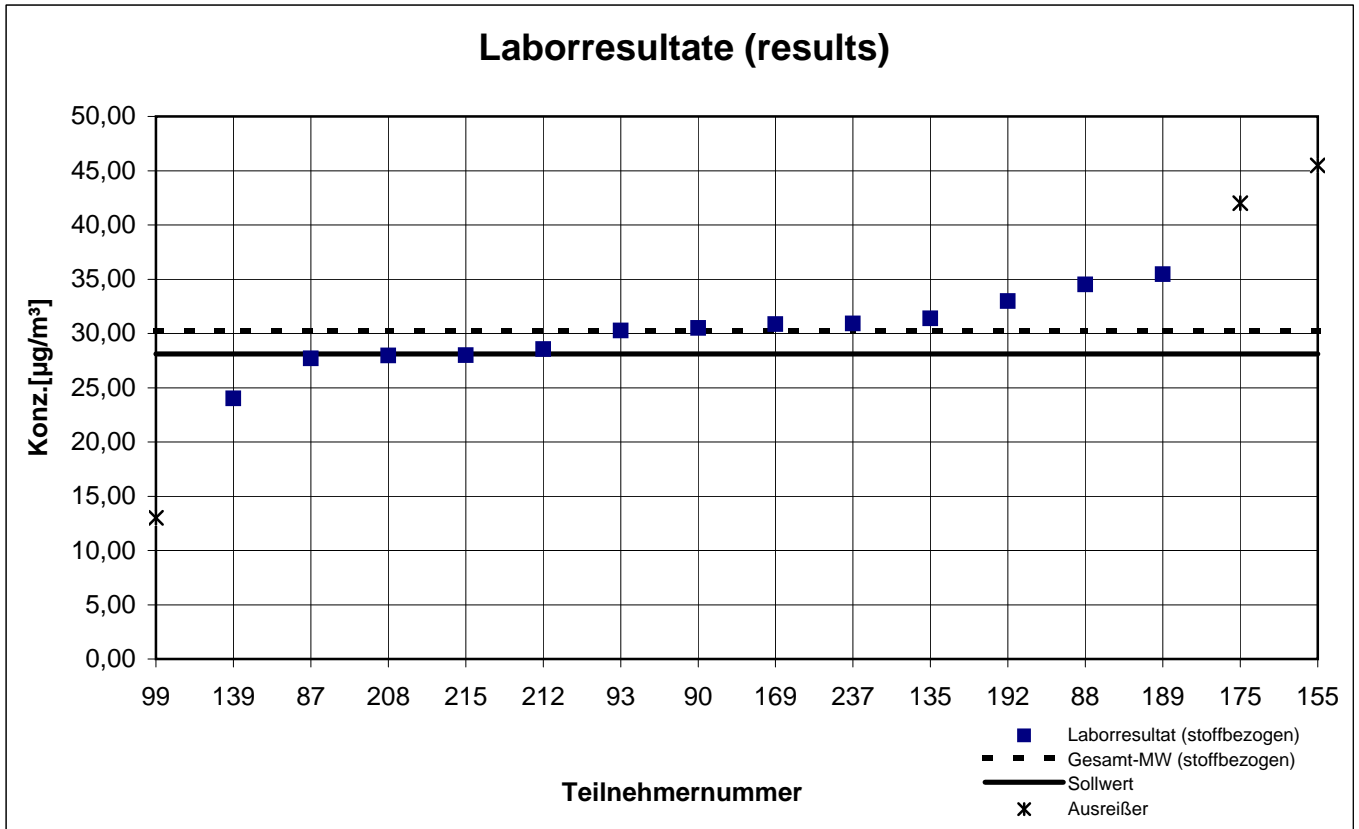
# Probe 2 (sample 2)

## Octamethylcyclotetrasiloxan



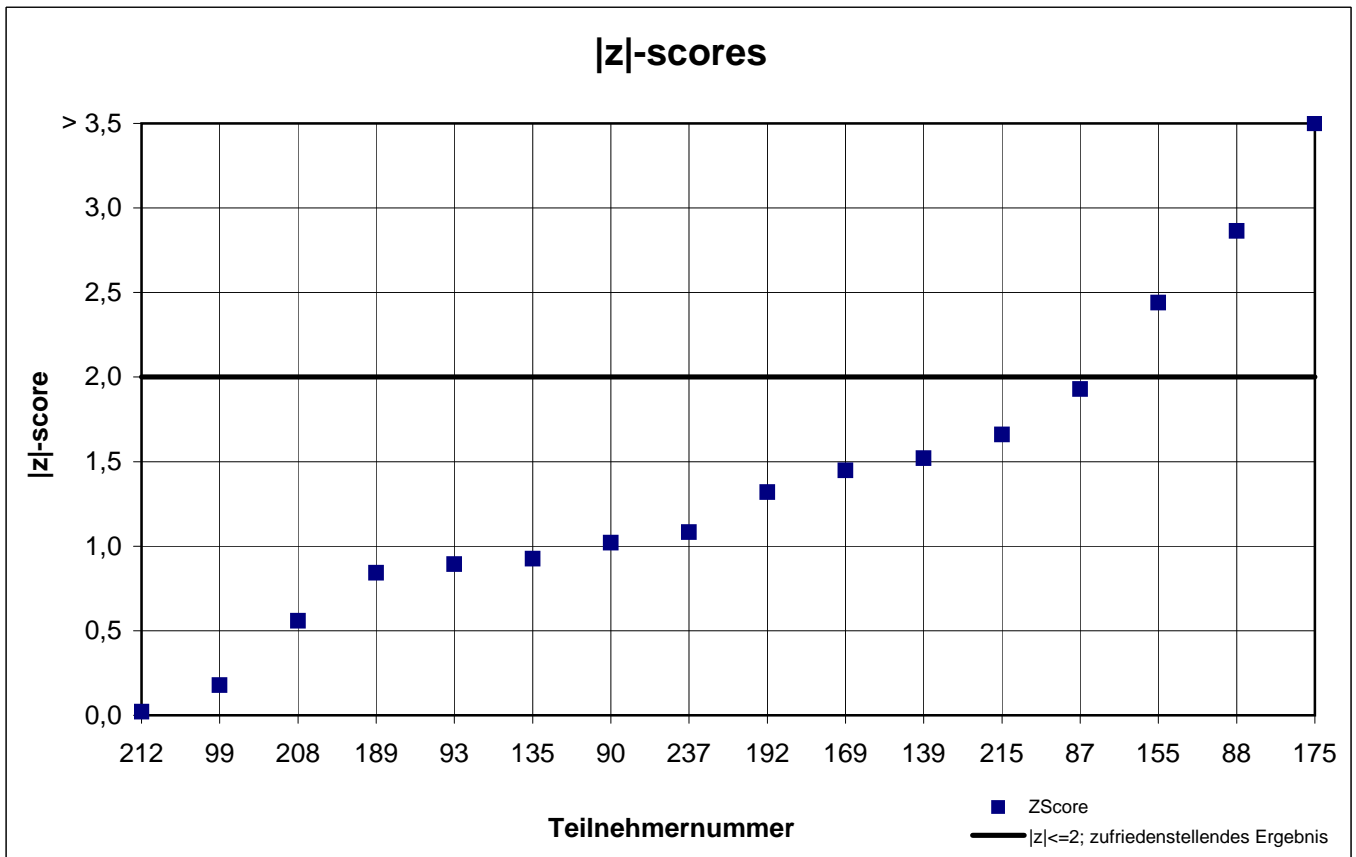
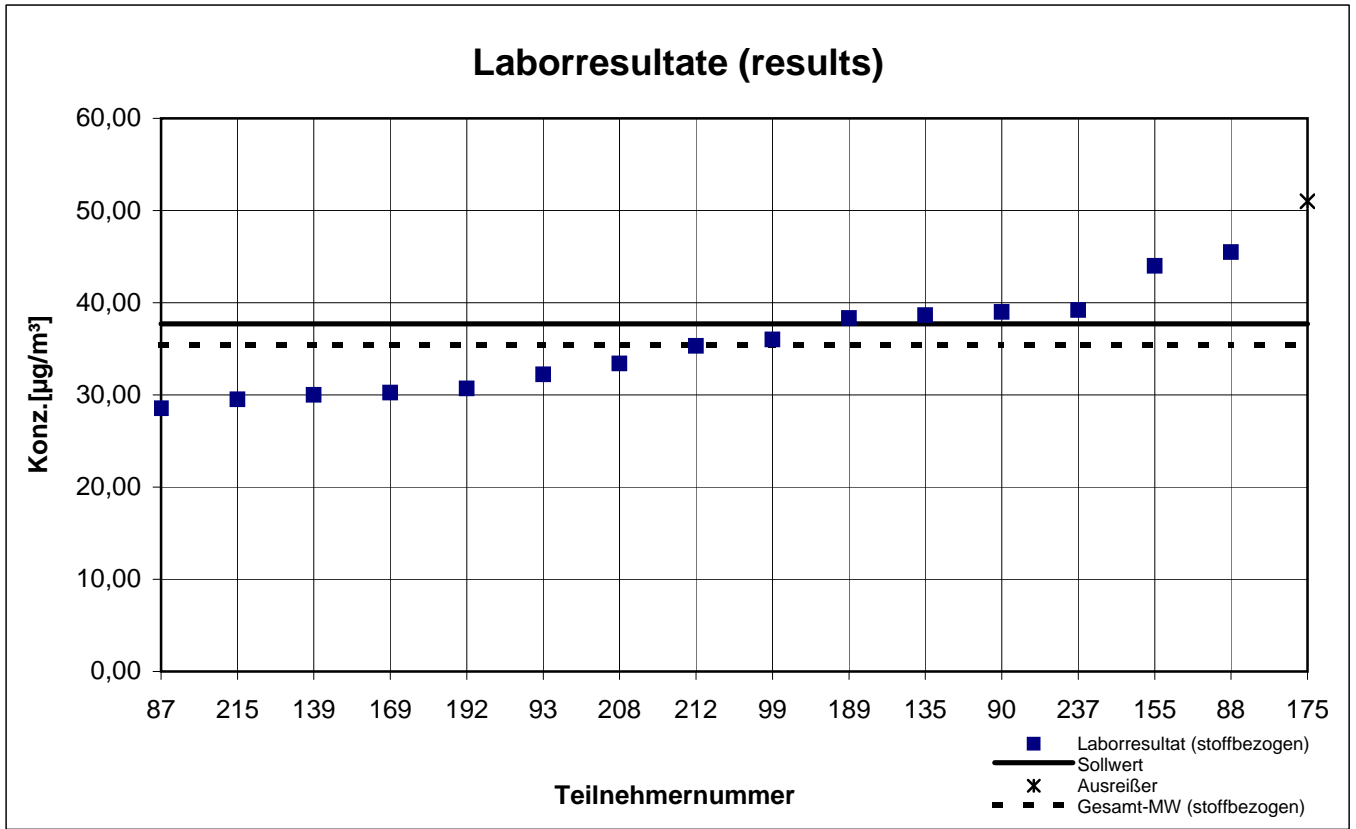
# Probe 2 (sample 2)

## p-Xylol



# Probe 2 (sample 2)

## R(+)-Limonen



# Probe 2 (sample 2)

## Toluol

