

results sample 1

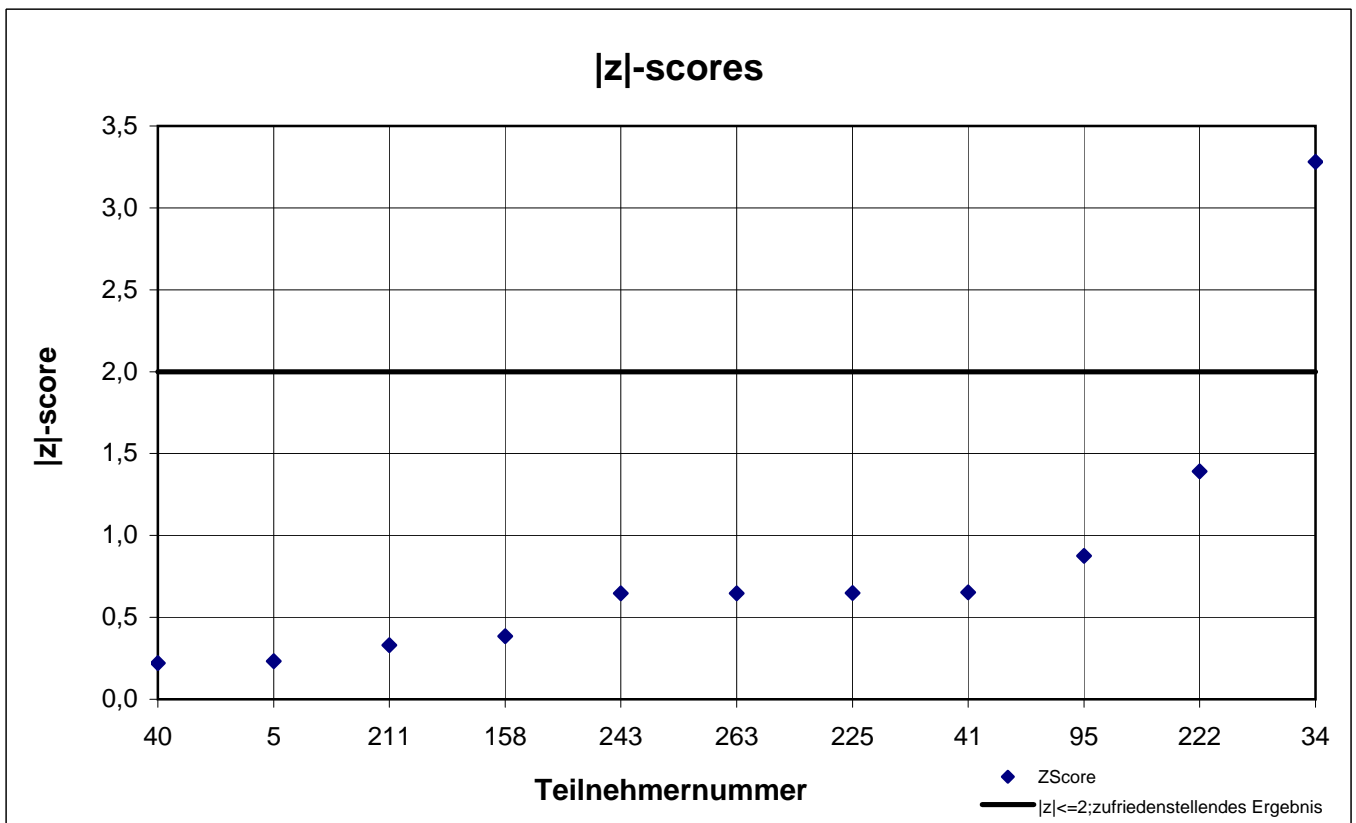
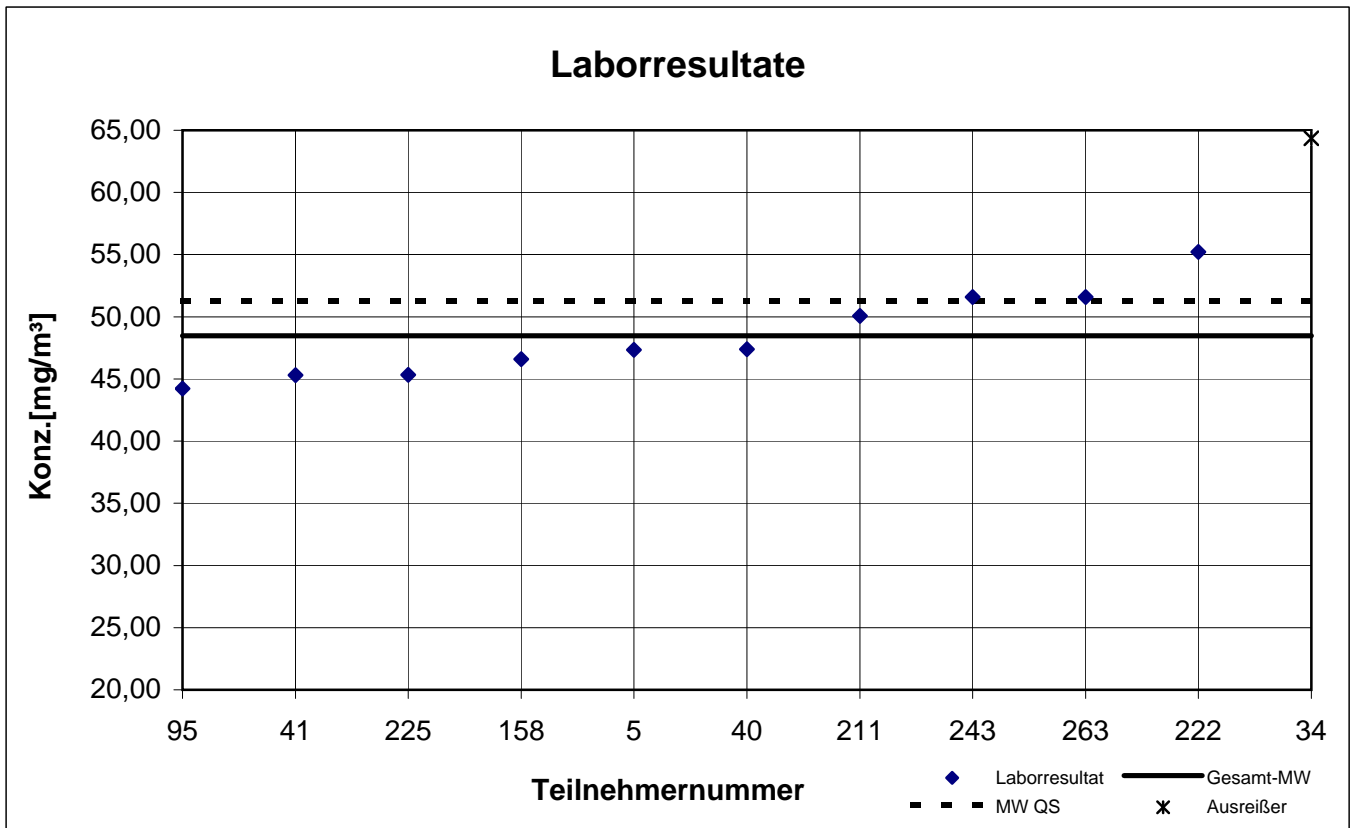
participant number	1-Butanol		Ethylbenzene		n-Butyl acetate		n-Heptane		p-Xylene		Toluene	
	result [mg/m ³]	z - score	result [mg/m ³]	z - score	result [mg/m ³]	z - score	result [mg/m ³]	z - score	result [mg/m ³]	z - score	result [mg/m ³]	z - score
5	103,7	0,2	100,3	0,0	74,62	0,2	104,9	0,8	53,88	0,1	37,62	0,1
17	111,4	0,6	101,7	0,1	77,27	0,5	86,50	1,1	50,83	0,5	35,73	0,4
34	65,5	3,8	84,4	1,6	65,4	1,1	70,00	2,8	48,10	1,0	34,00	0,9
40	99,0	0,6	97,7	0,3	71,6	0,2	94,20	0,3	52,60	0,1	36,60	0,2
72	122,8	1,6	107,6	0,7	77,0	0,5	105,4	0,9	58,00	0,9	39,00	0,5
111	149,0	4,1	108,0	0,7	84,3	1,5	115,0	1,9	60,00	1,3	34,67	0,7
130	103,4	0,2	100,2	0,0	73,4	0,0	96,27	0,1	59,43	1,1	46,77	2,6
154	119,5	1,3	101,9	0,1	76,65	0,5	94,47	0,2	53,81	0,1	36,93	0,1
179	96,62	0,8	100,3	0,0	71,19	0,3	90,47	0,7	53,45	0,0	39,67	0,7
240	103,2	0,2	106,7	0,6	73,20	0,0	116,0	2,0	55,20	0,4	35,90	0,3
242	104,4	0,1	84,87	1,6	61,16	1,7	91,40	0,6	43,09	1,9	33,87	0,9
272	91,37	1,3	112,1	1,2	74,10	0,1	287,8	19,7	51,50	0,3	35,37	0,5

marked fields are outliers!

	1-Butanol	Ethylbenzene	n-Butyl acetate	n-Heptan	p-Xylene	Toluene
mean c_k [mg / m ³]	48,47	85,16	98,45	107,3	58,38	78,34
standard deviation S_k [mg/m ³]	3,521	6,527	10,546	10,938	5,417	9,673
relative standard deviation [%]	7,26	7,66	10,71	10,19	9,28	12,35
"mean value of control samples" [mg/m ³]	51,30	88,60	95,80	106,5	55,70	76,50

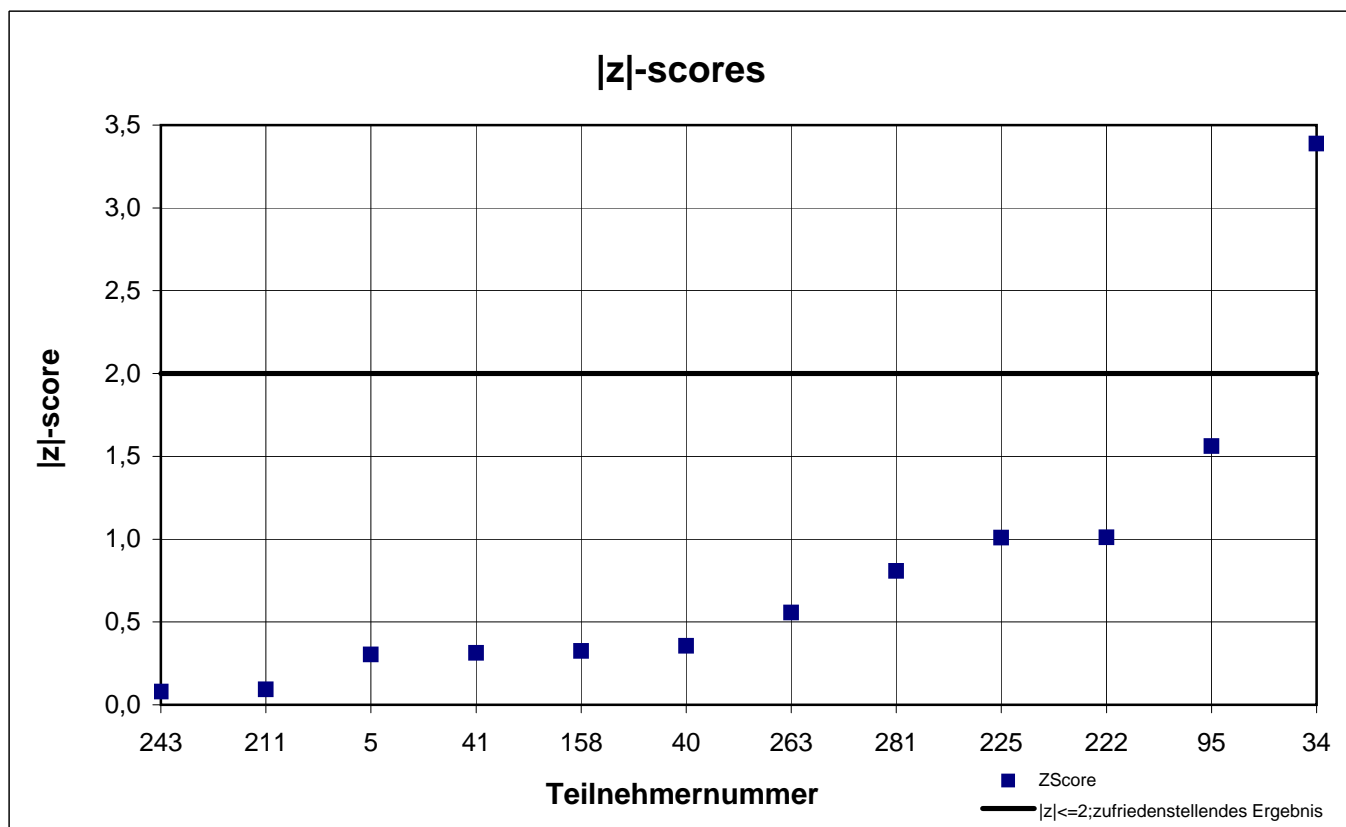
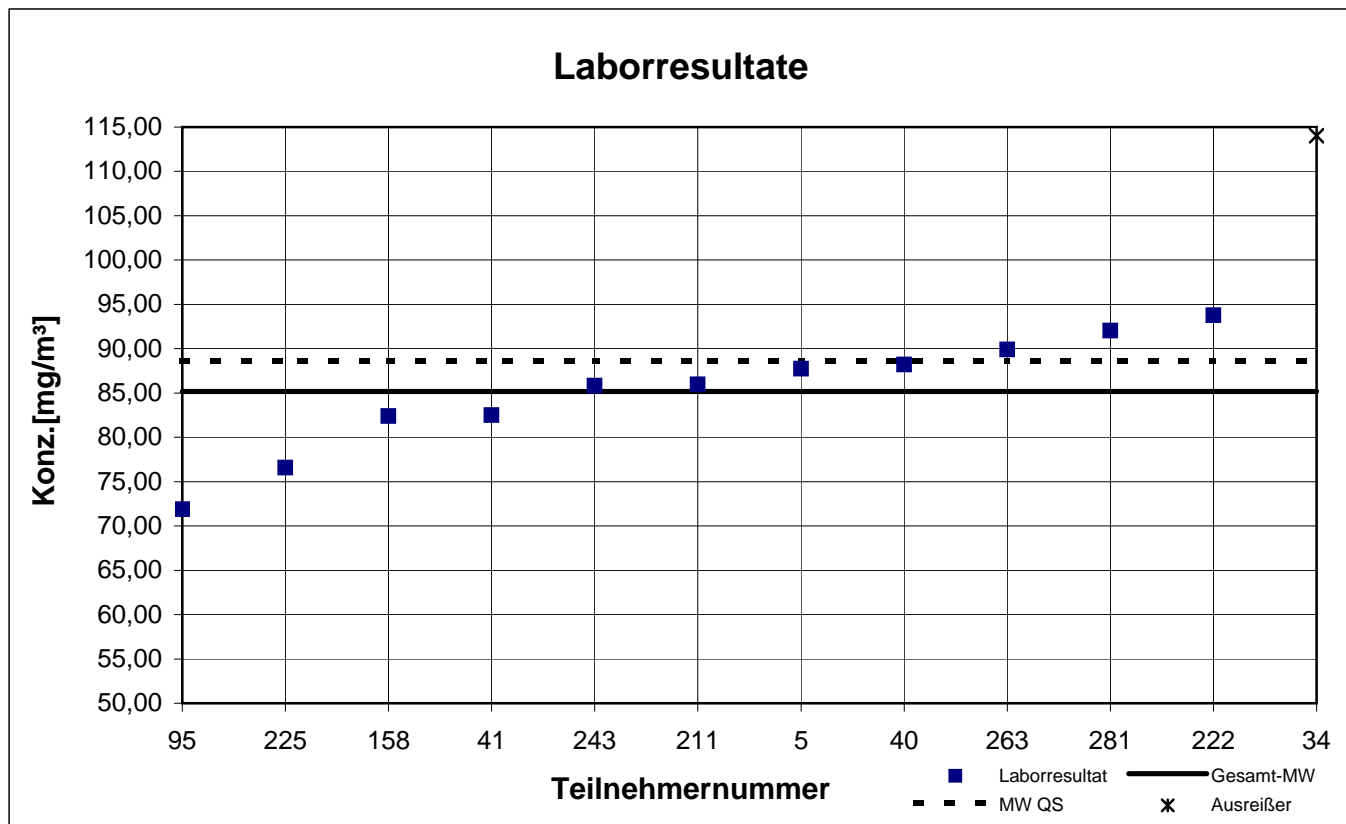
Probe 1

1-Butanol



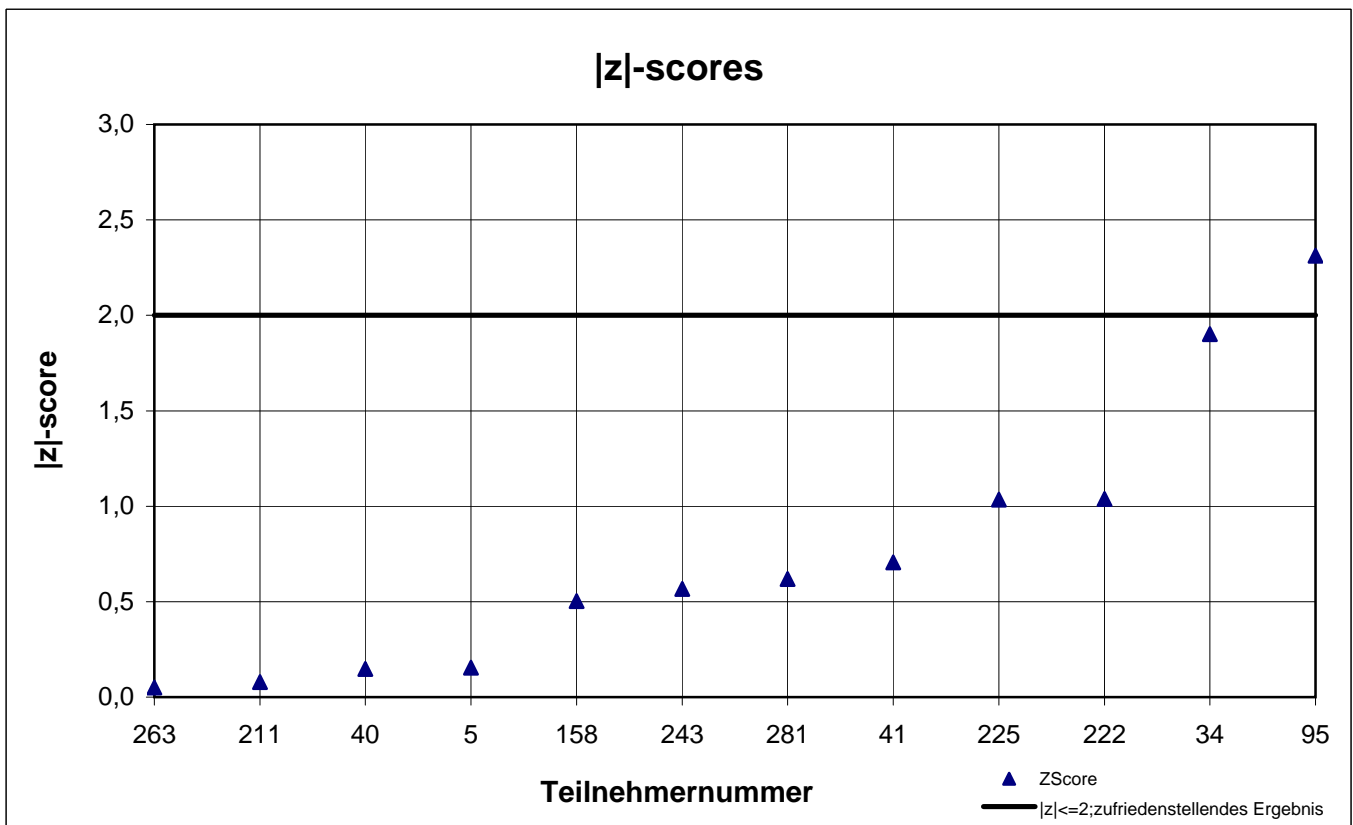
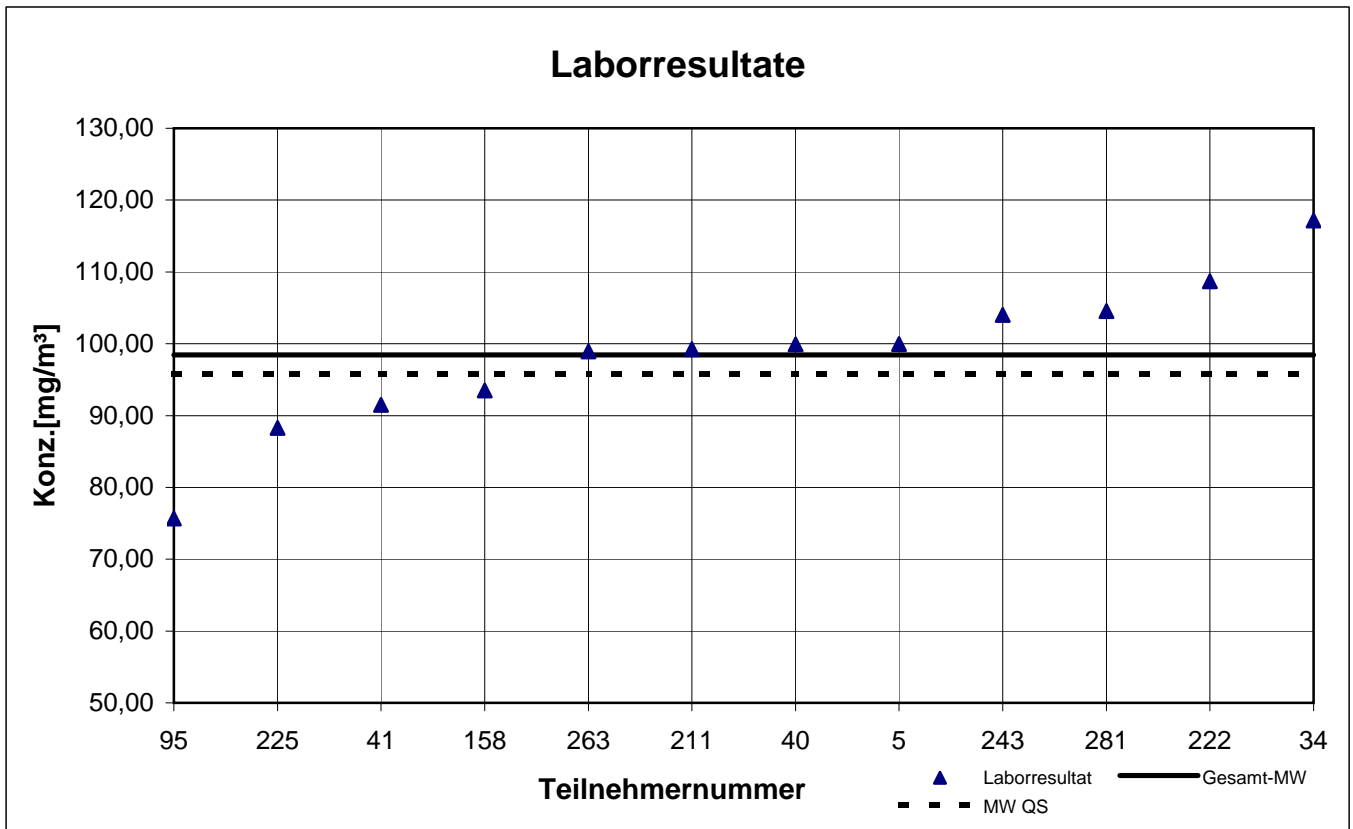
Probe 1

Ethylbenzol



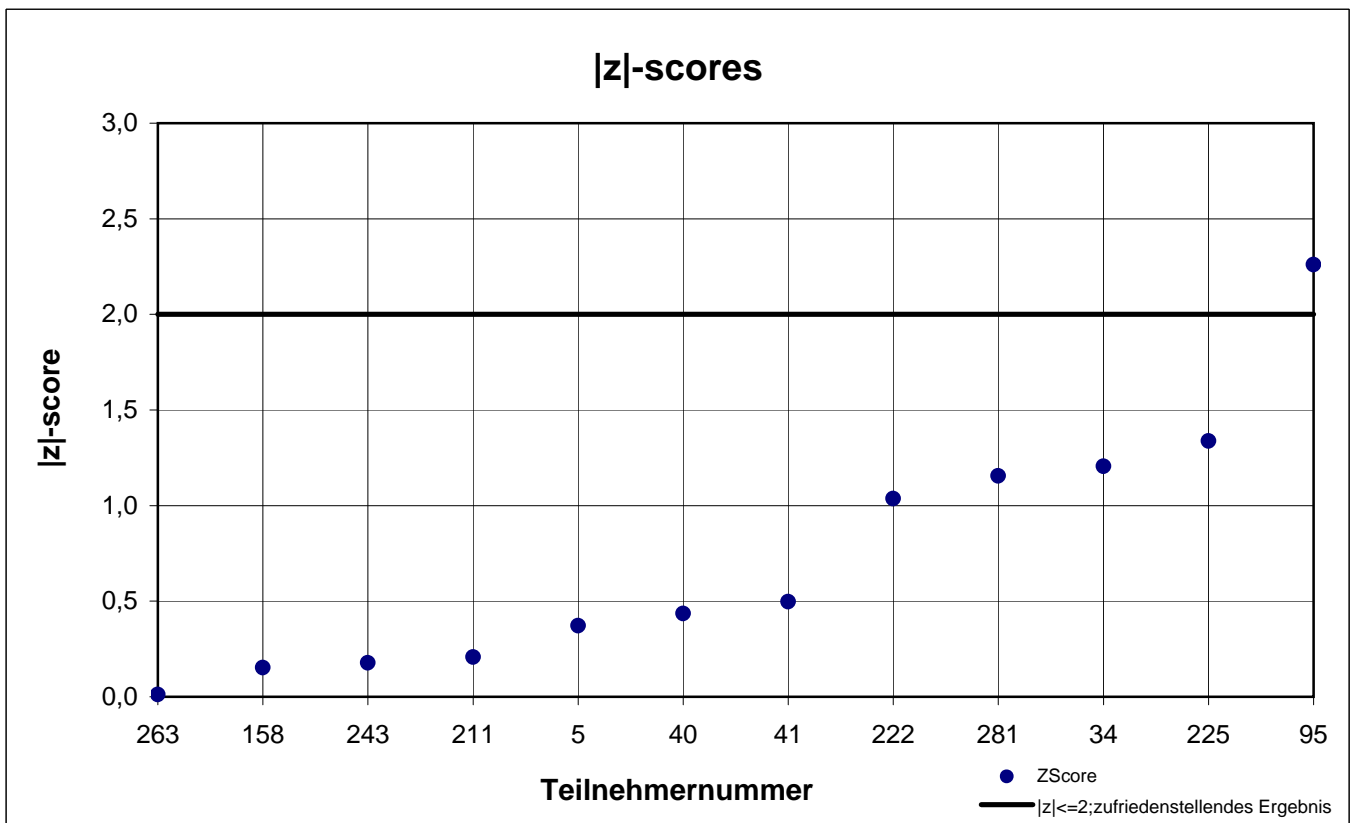
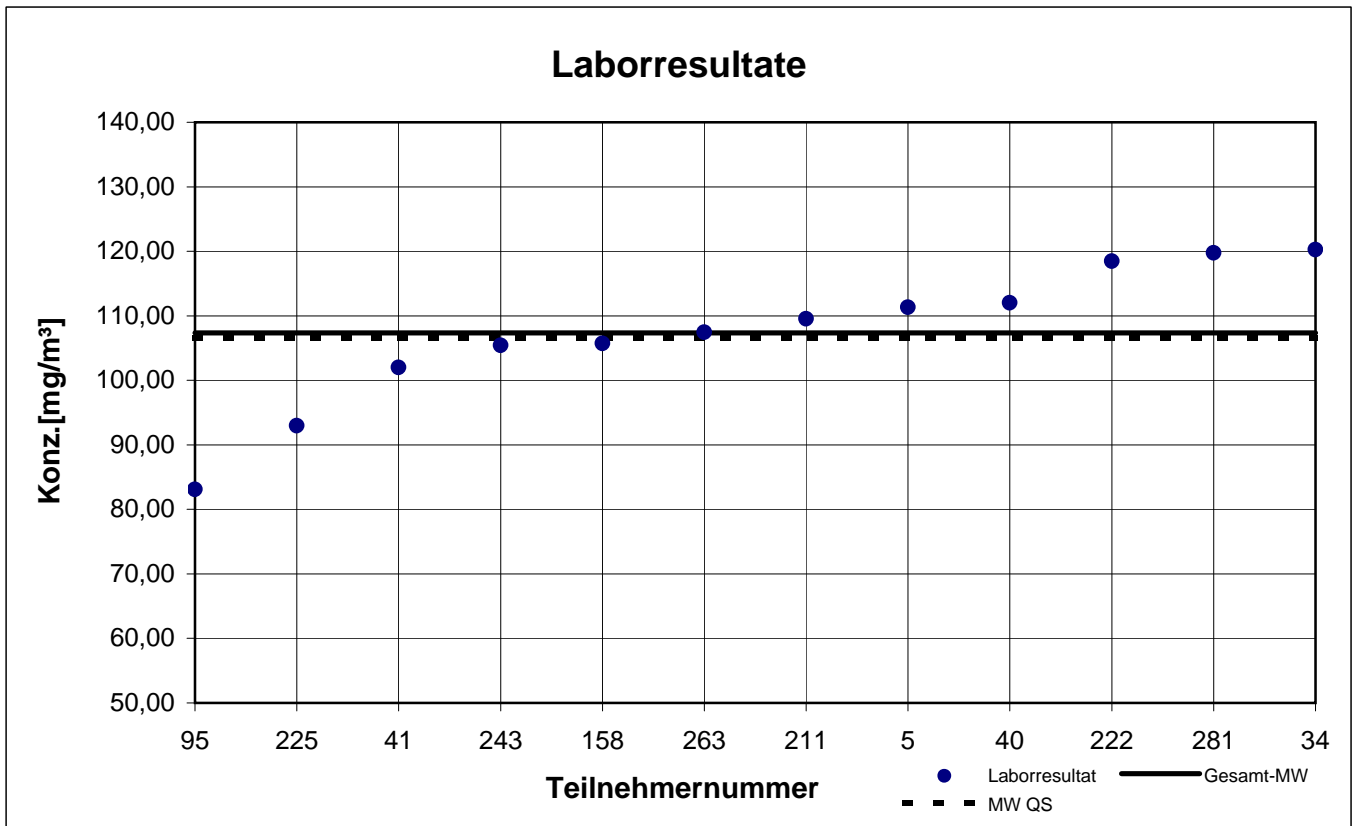
Probe 1

n-Butylacetat



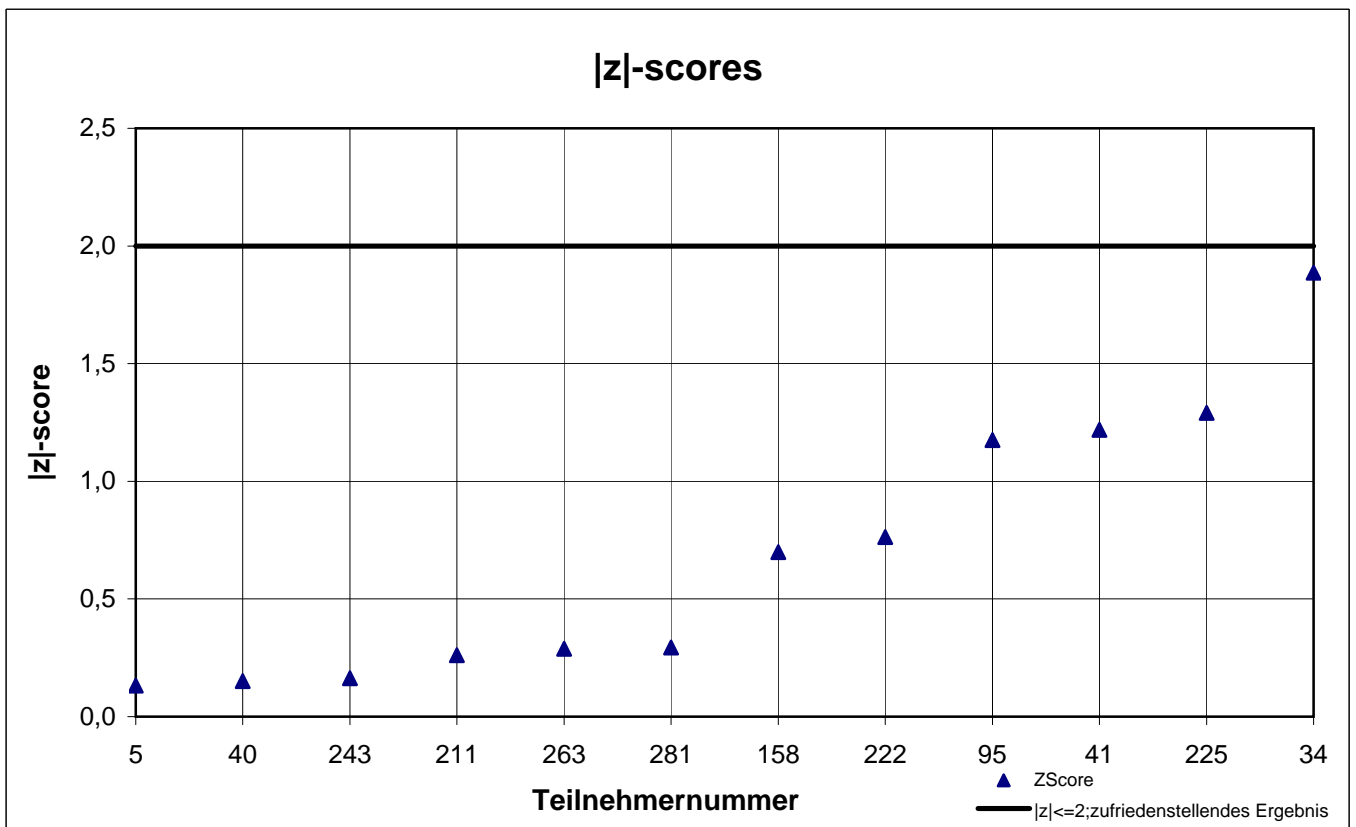
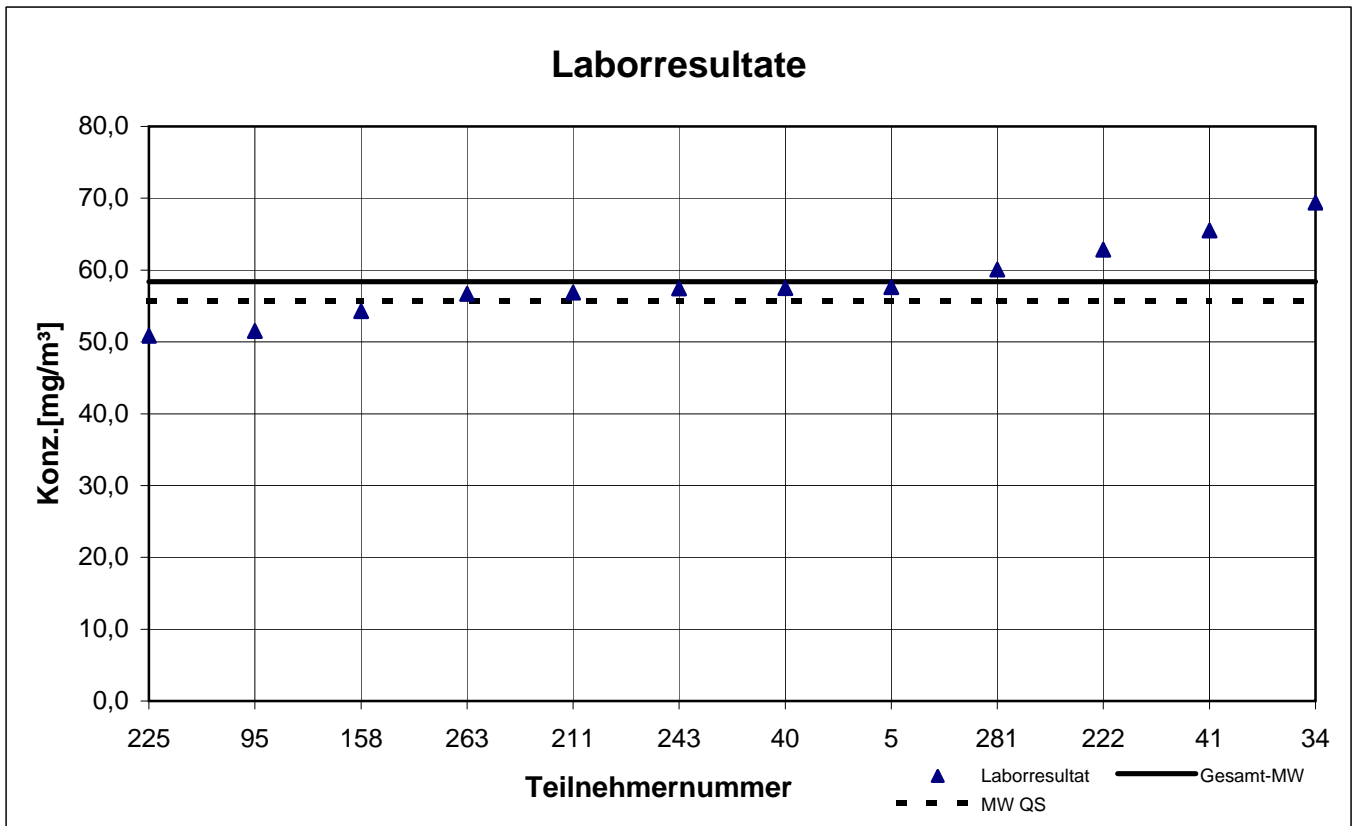
Probe 1

n-Heptan



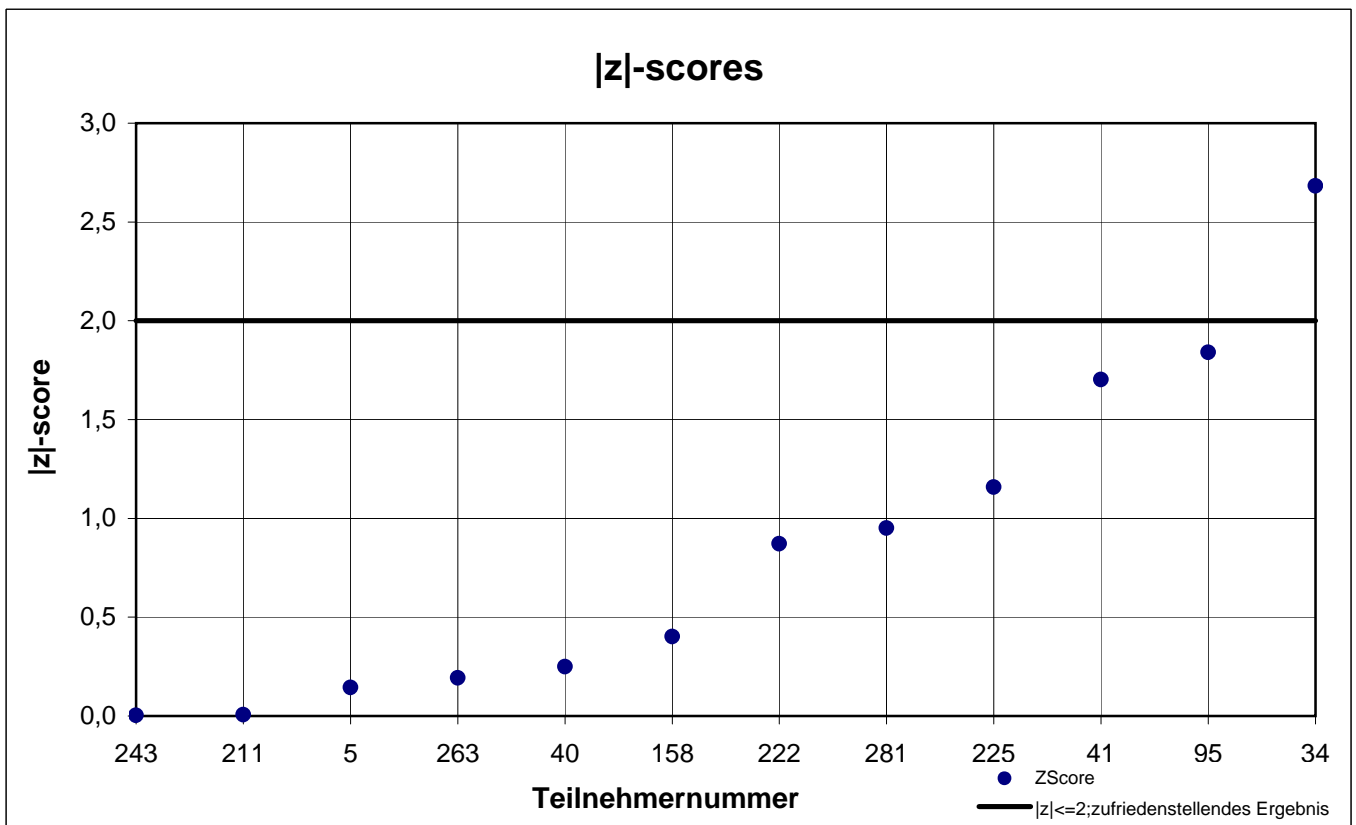
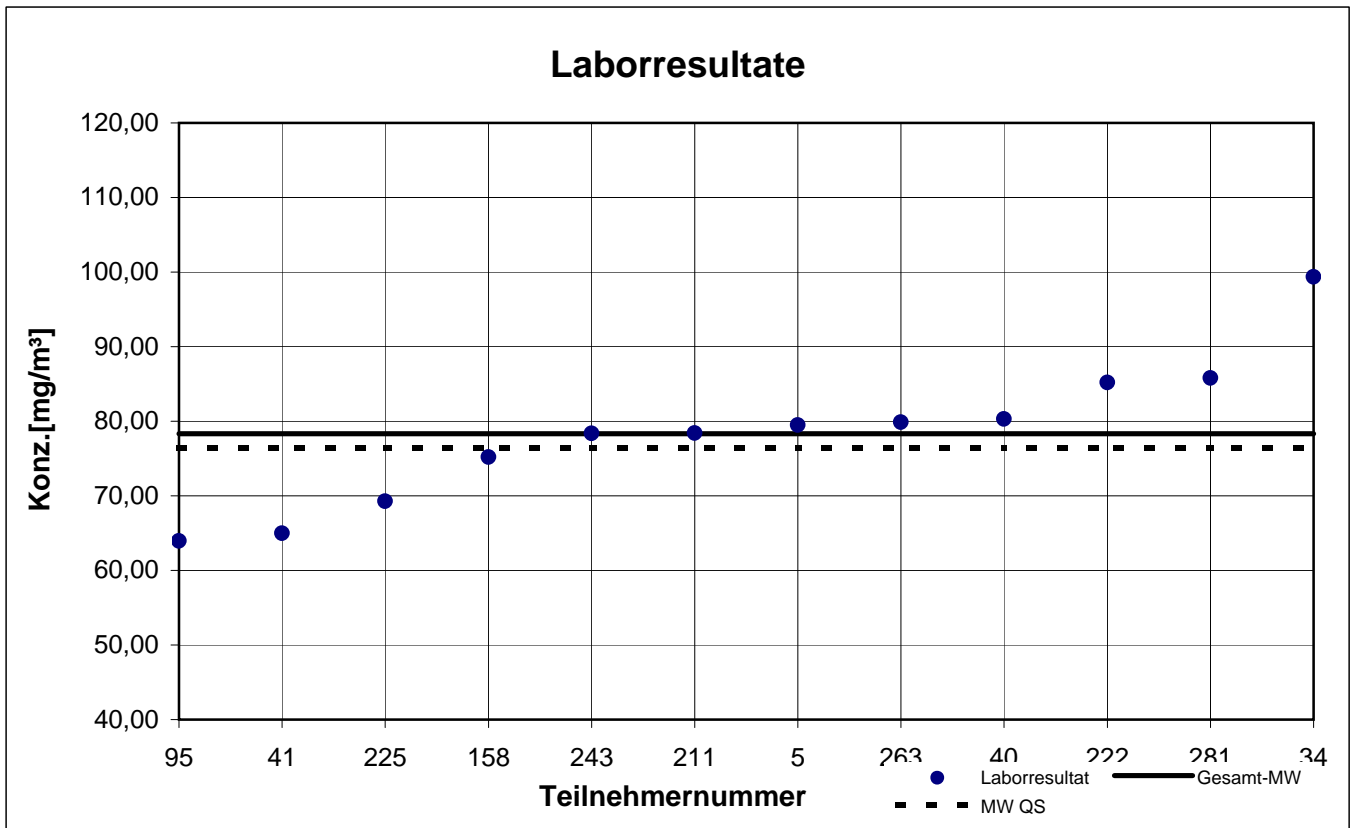
Probe 1

p-Xylol



Probe 1

Toluol



results sample 2

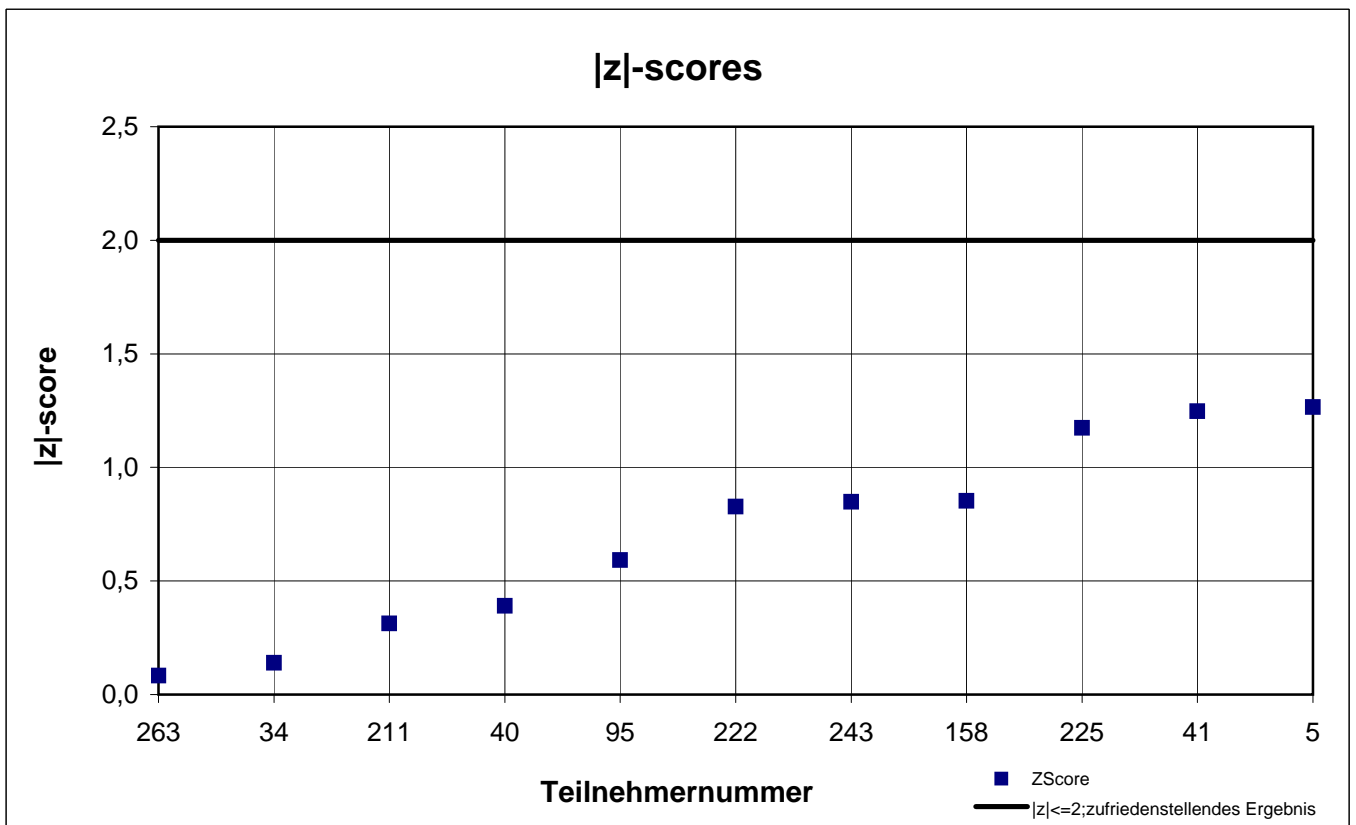
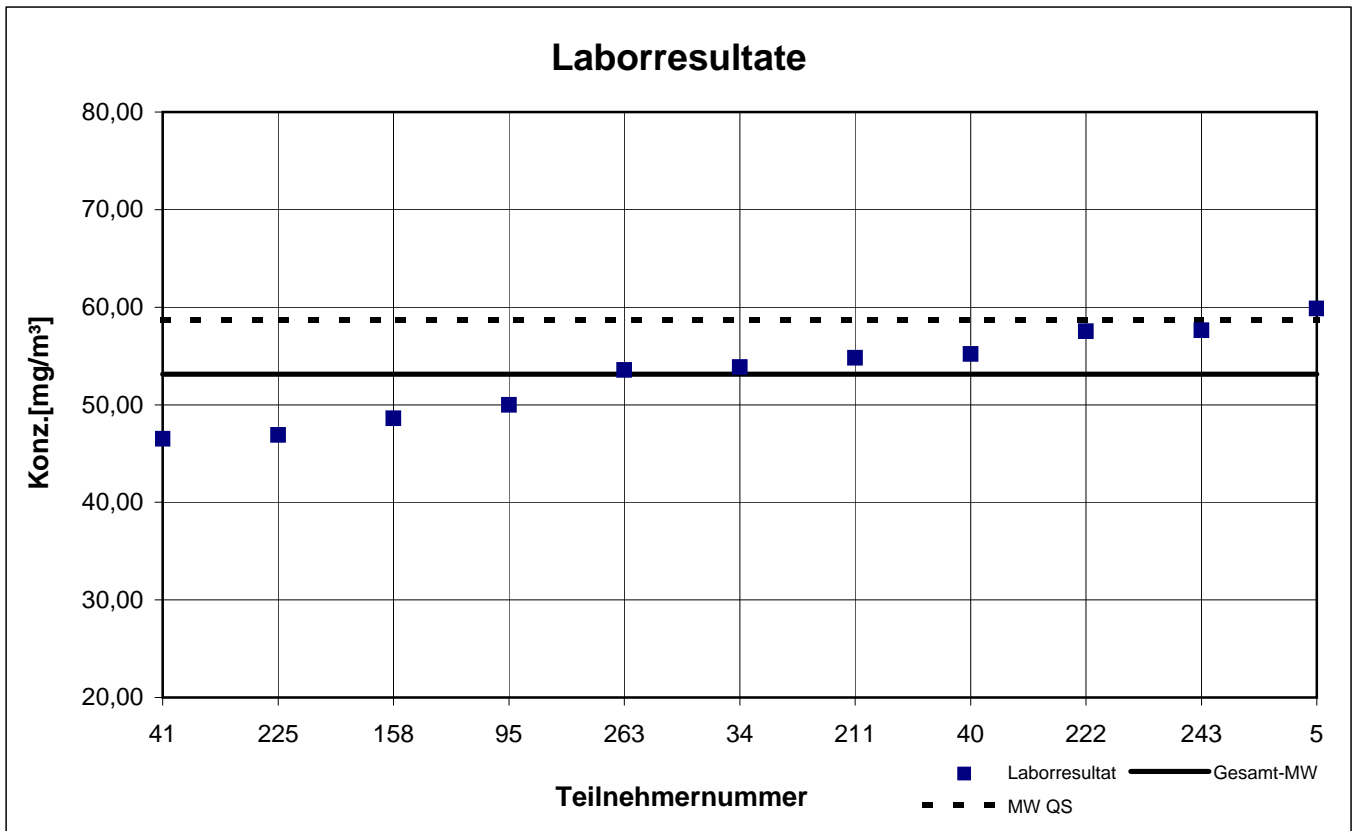
participant number	1-Methoxy-2-propanol		2-Butanol		2-Butoxyethanol		Ethanol	
	result [mg/m³]	z - score	result [mg/m³]	z - score	result [mg/m³]	z - score	result [mg/m³]	z - score
5	59,85	1,3	93,18	0,7	19,51	0,3	130,9	1,4
34	53,87	0,1	73,52	1,5	22,66	2,0	65,07	4,3
40	55,20	0,4	90,10	0,4	19,50	0,3	119,3	0,4
41	46,50	1,2	80,40	0,8	15,00	2,1	105,2	0,8
95	49,98	0,6	75,88	1,3	28,72	5,2	k.A.	k.A.
158	48,60	0,9	86,20	0,1	17,70	0,6	110,3	0,4
211	54,79	0,3	91,96	0,6	16,97	1,0	116,6	0,2
222	57,53	0,8	94,91	0,9	19,55	0,4	126,3	1,0
225	46,89	1,2	79,12	0,9	18,22	0,3	104,9	0,8
243	57,63	0,8	102,6	1,8	20,43	0,8	138,6	2,1
263	53,57	0,1	88,40	0,2	19,20	0,2	102,8	1,0
281	k.A.	k.A.	k.A.	k.A.	k.A.	k.A.	88,95	2,2

 marked fields are outliers!

	1-Methoxy-2-propanol	2-Butanol	2-Butoxy-ethanol	Ethanol
mean c_k [mg / m³]	53,13	86,94	18,87	114,4
standard deviation S_k [mg/m³]	4,537	8,905	2,069	14,918
relative standard deviation [%]	8,54	10,24	10,96	13,04
"mean value of control samples" [mg/m³]	58,70	93,70	19,60	122,7

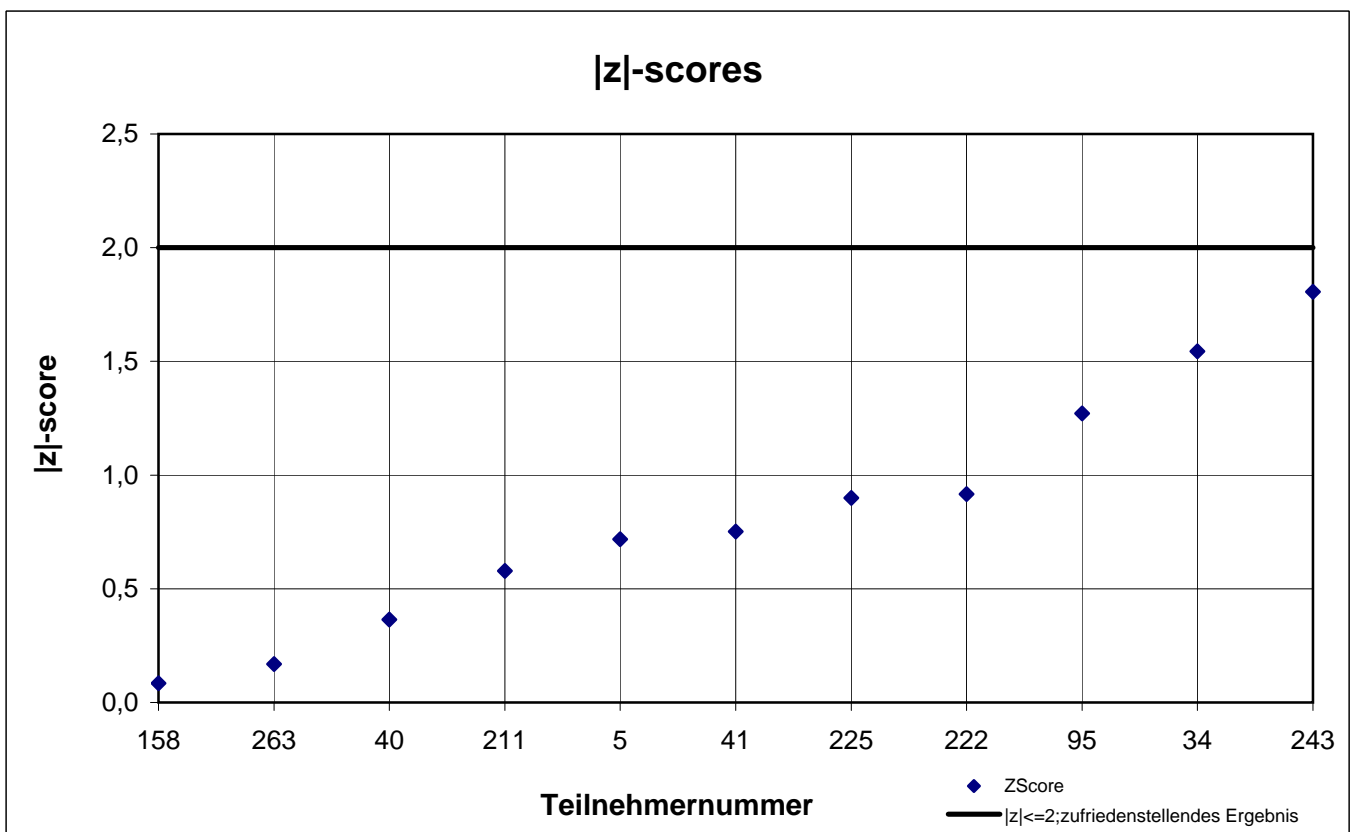
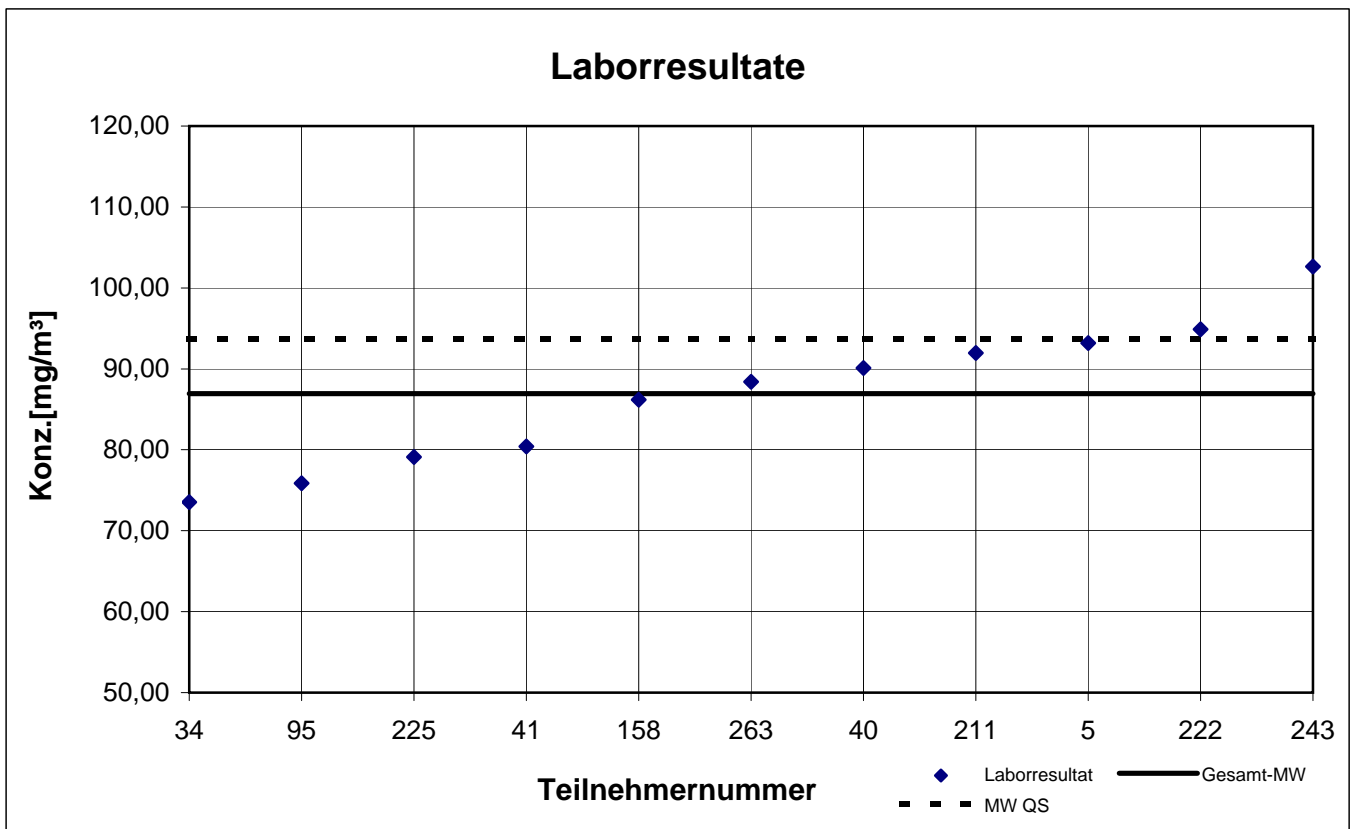
Probe 2

1-Methoxy-2-propanol



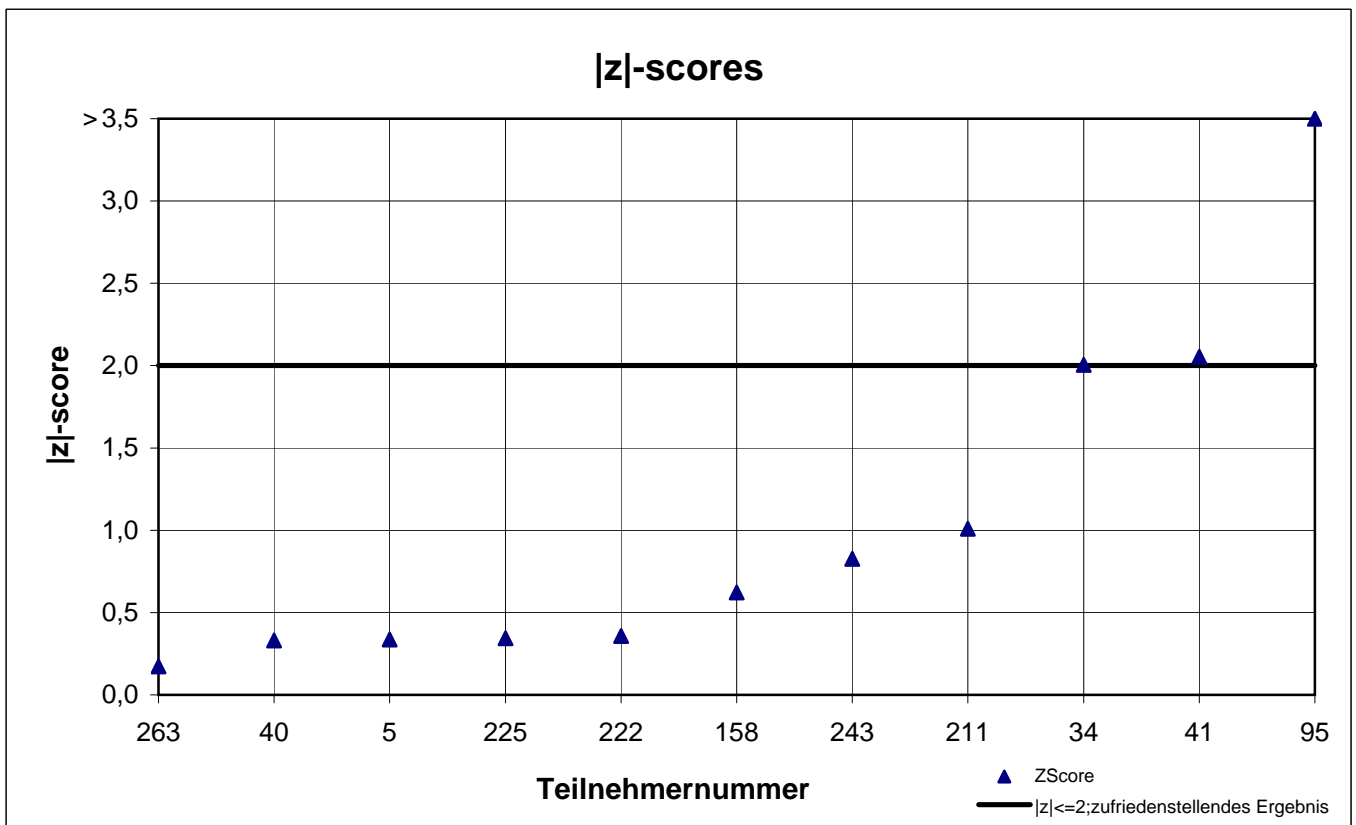
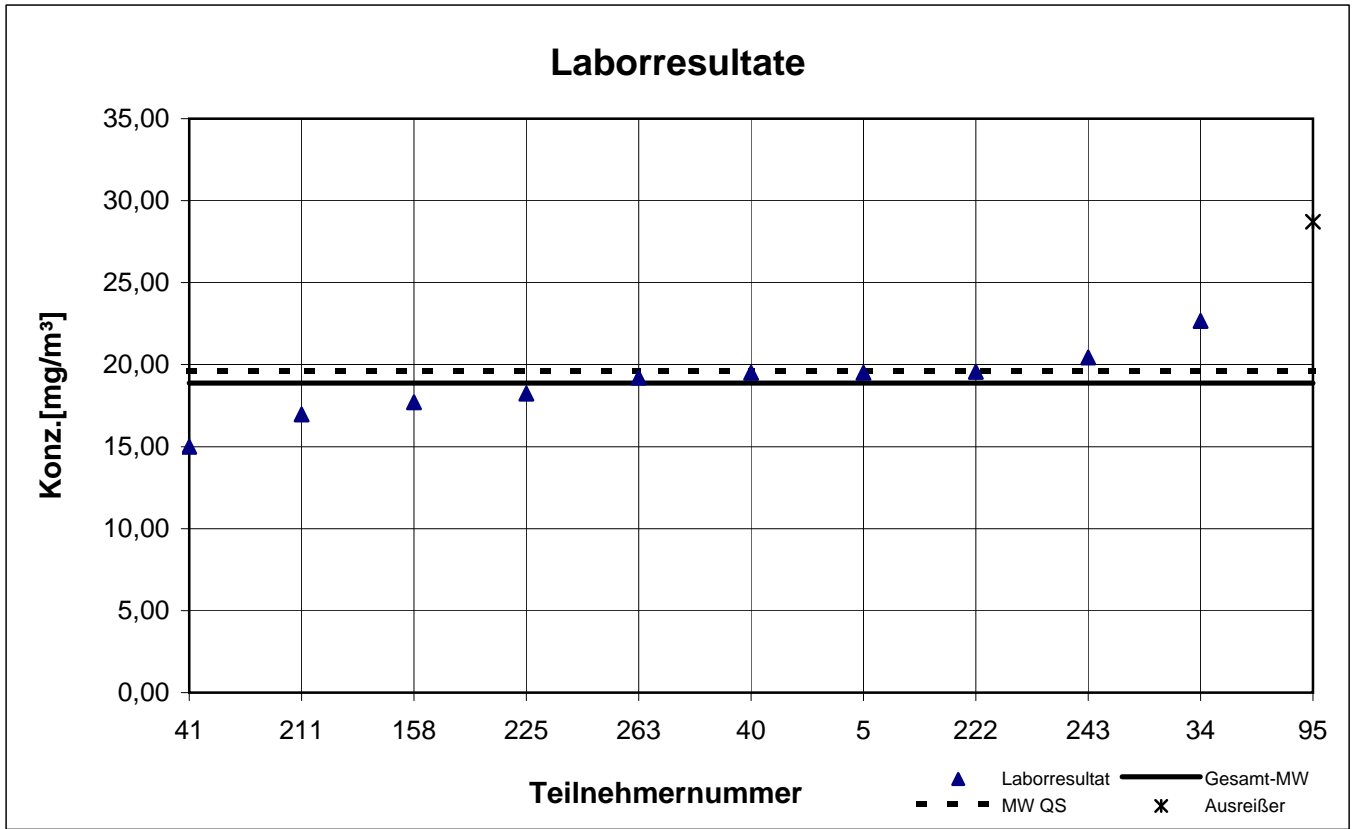
Probe 2

2-Butanol



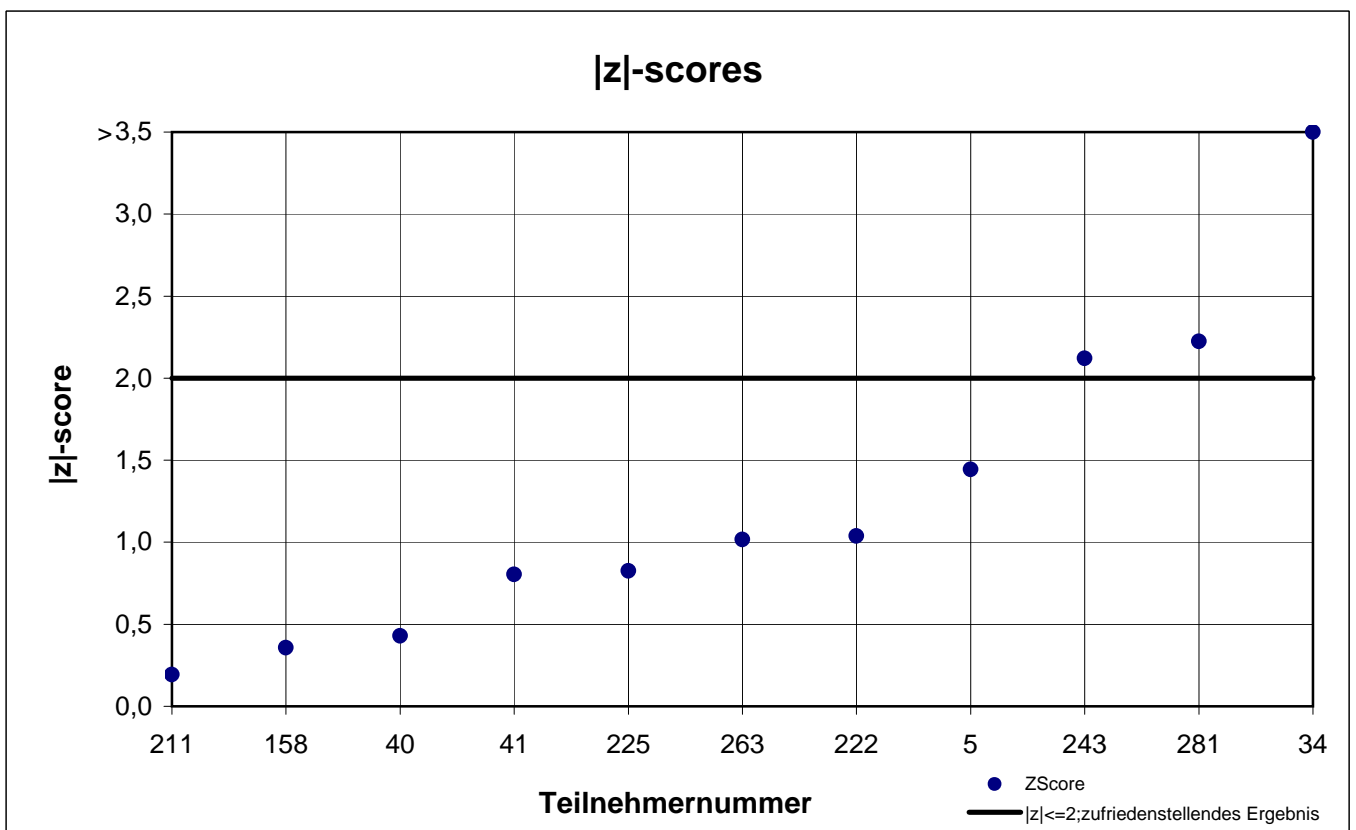
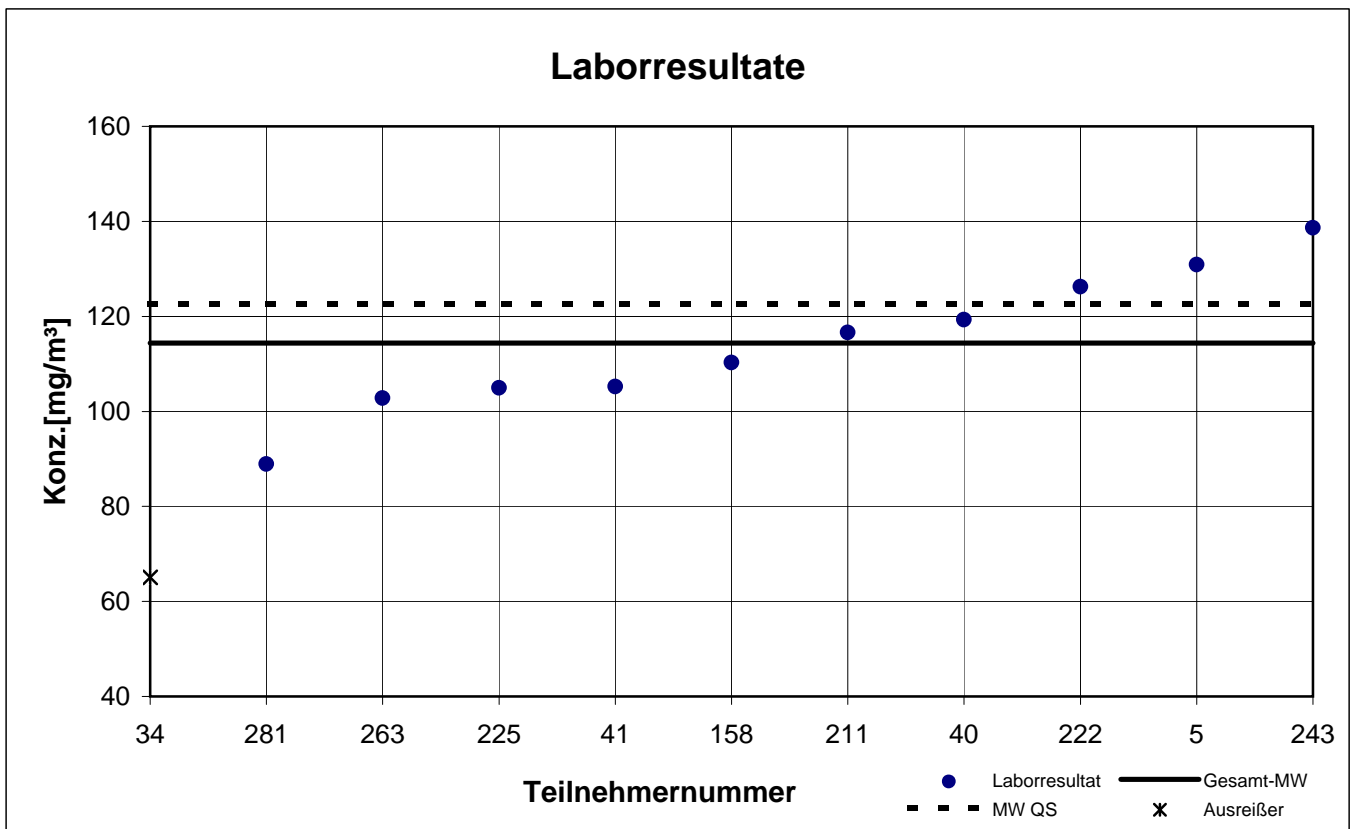
Probe 2

2-Butoxyethanol



Probe 2

Ethanol



results sample 3

participant number	Methanol	
	result [mg/m ³]	z - score
5	78,86	0,7
34	14,35	8,1
40	84,20	1,4
41	72,80	0,2
95	k.A.	k.A.
158	73,00	0,1
211	75,21	0,2
222	79,62	0,8
225	64,70	1,2
243	73,40	0,1
263	63,60	1,4
281	12,45	8,3

 marked fields are outliers!

	Methanol
mean c_k [mg / m ³]	73,93
standard deviation S_k [mg/m ³]	6,690
relative standard deviation [%]	9,05
"reference value" [mg/m ³]	76,50

Probe 3

Methanol

