

results TYP B - sample 1

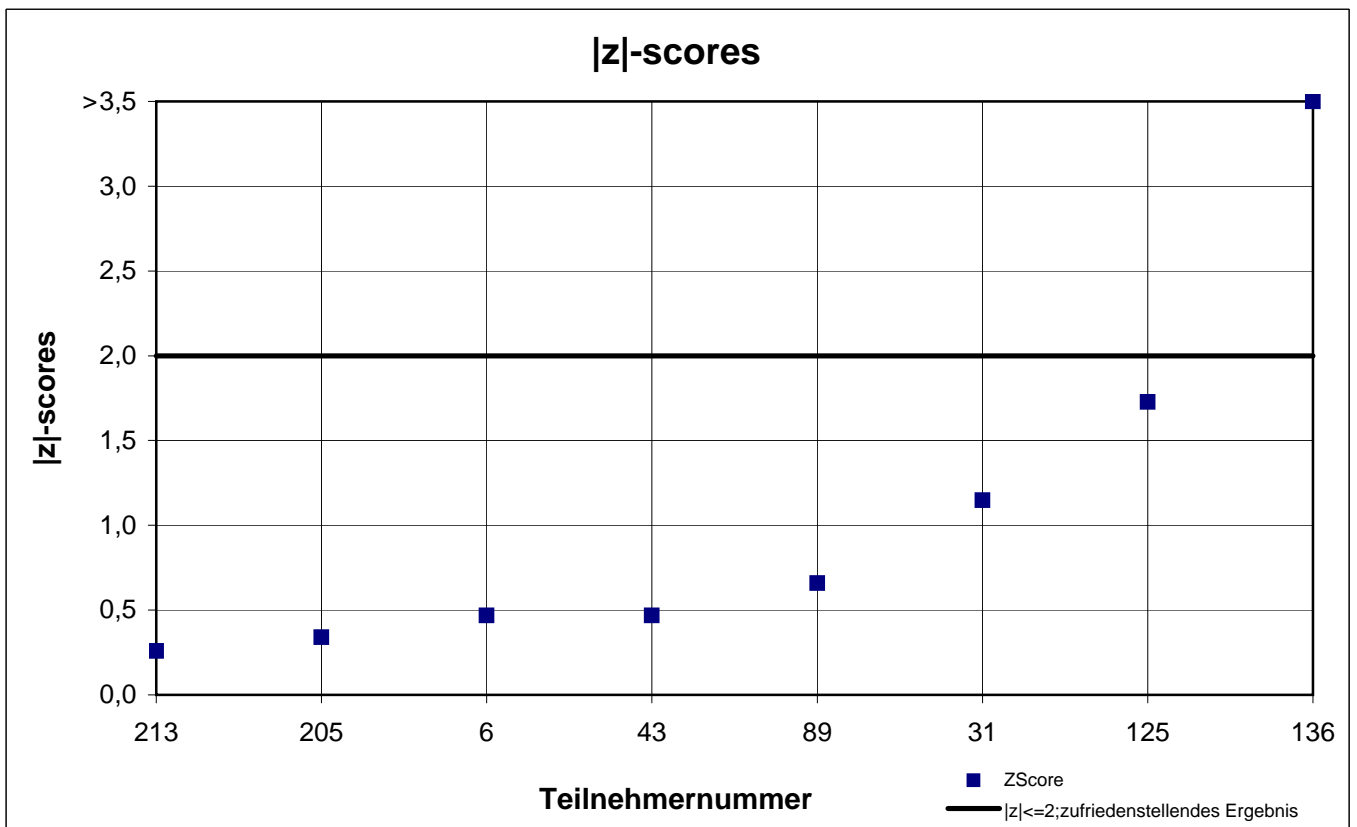
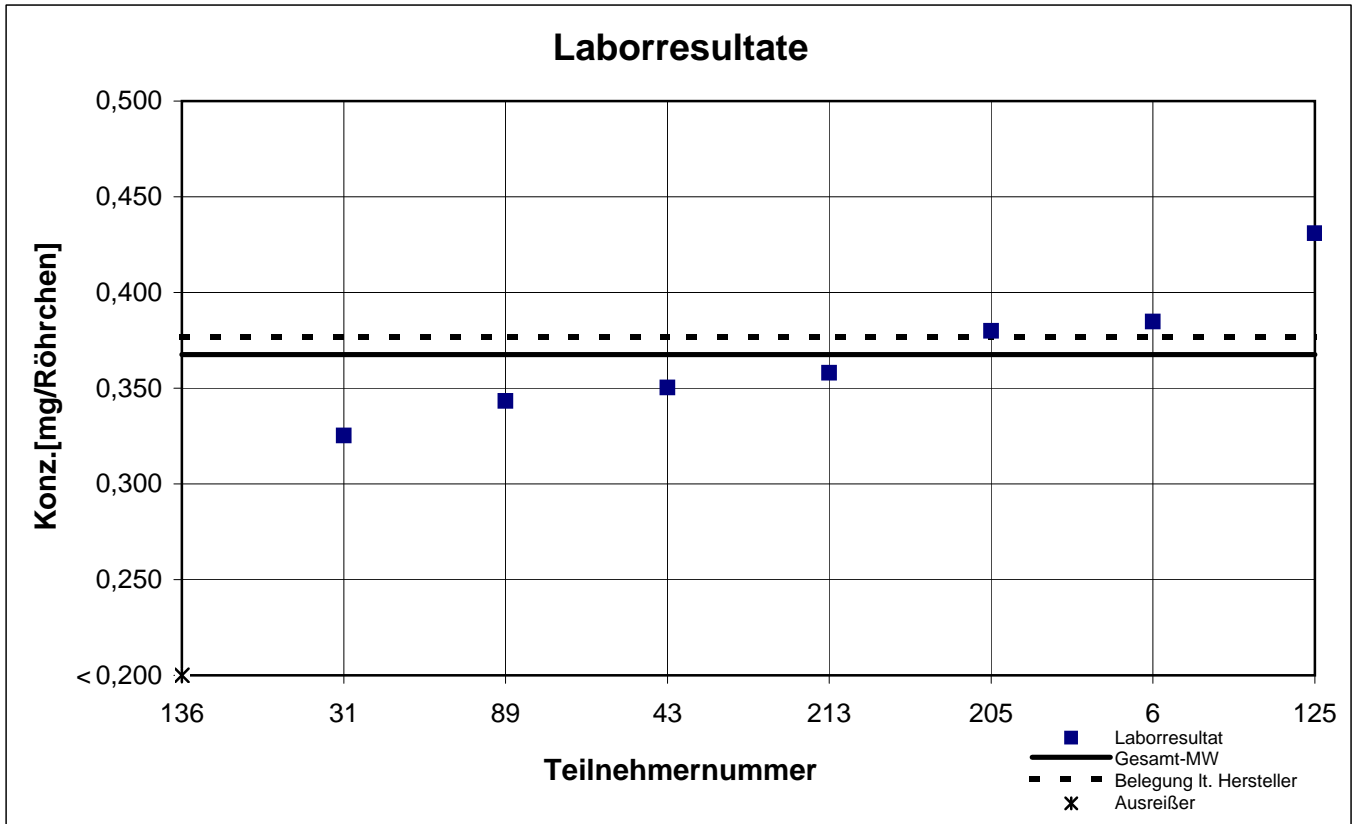
participant number	ethyl benzene		o-xylene		toluene	
	result [mg/tube]	z - score	result [mg/tube]	z - score	result [mg/tube]	z - score
6	0,385	0,5	0,223	0,7	1,833	0,2
9	k.A.	k.A.	k.A.	k.A.	k.A.	k.A.
31	0,325	1,1	0,213	1,1	1,713	0,8
43	0,350	0,5	0,234	0,2	1,821	0,2
89	0,343	0,7	0,210	1,2	1,643	1,2
125	0,431	1,7	0,303	2,7	2,251	2,1
136	0,070	8,1	0,040	8,3	0,770	5,9
205	0,380	0,3	0,240	0,0	1,900	0,2
213	0,358	0,3	0,253	0,6	1,904	0,2

 marked fields are outliers!

	ethyl benzene	o-xylene	toluene
mean c_k [mg / tube]	0,368	0,240	1,866
standard deviation S_k [mg / tube]	0,0347	0,0319	0,1945
relative standard deviation [%]	9,45	13,33	10,43
mean value of control samples [mg / tube]	0,377	0,255	1,931

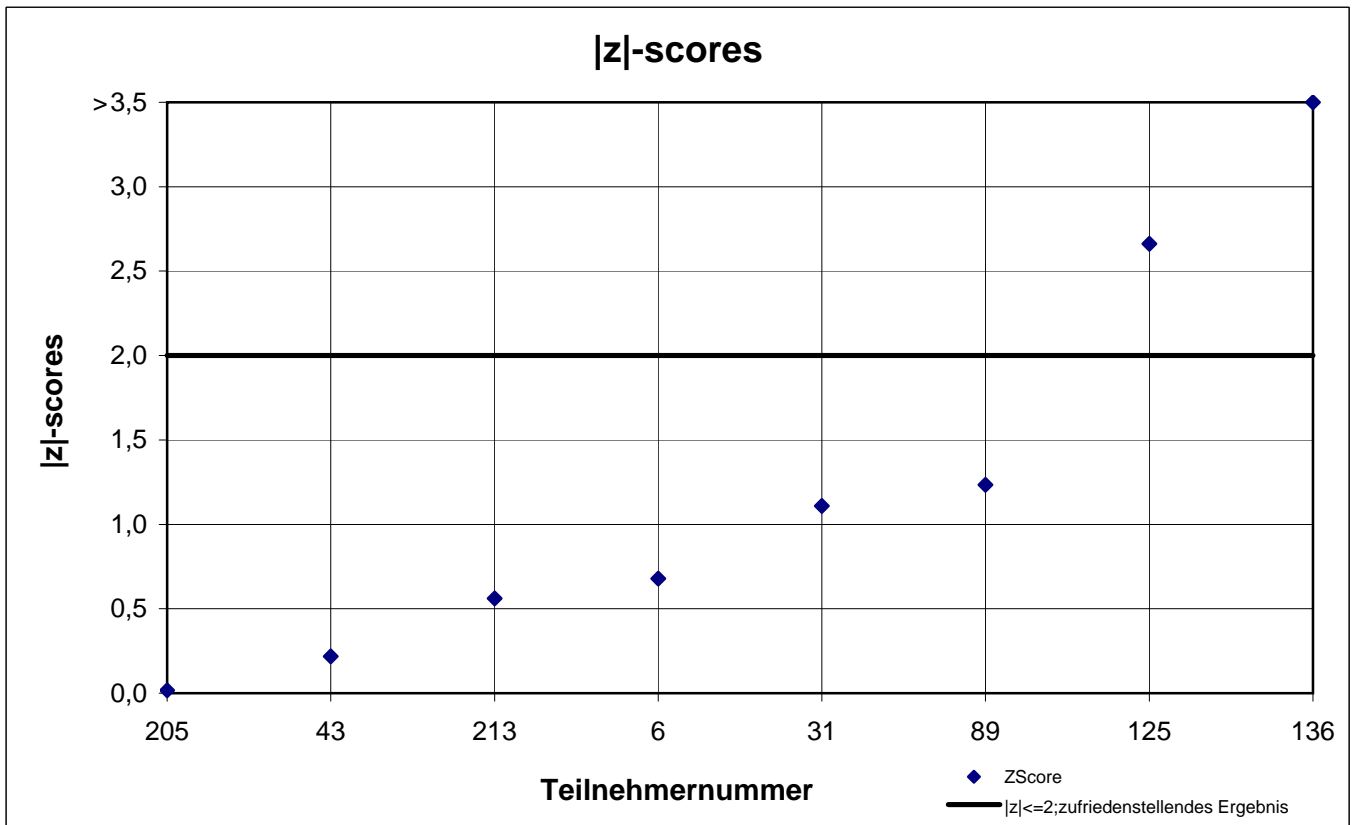
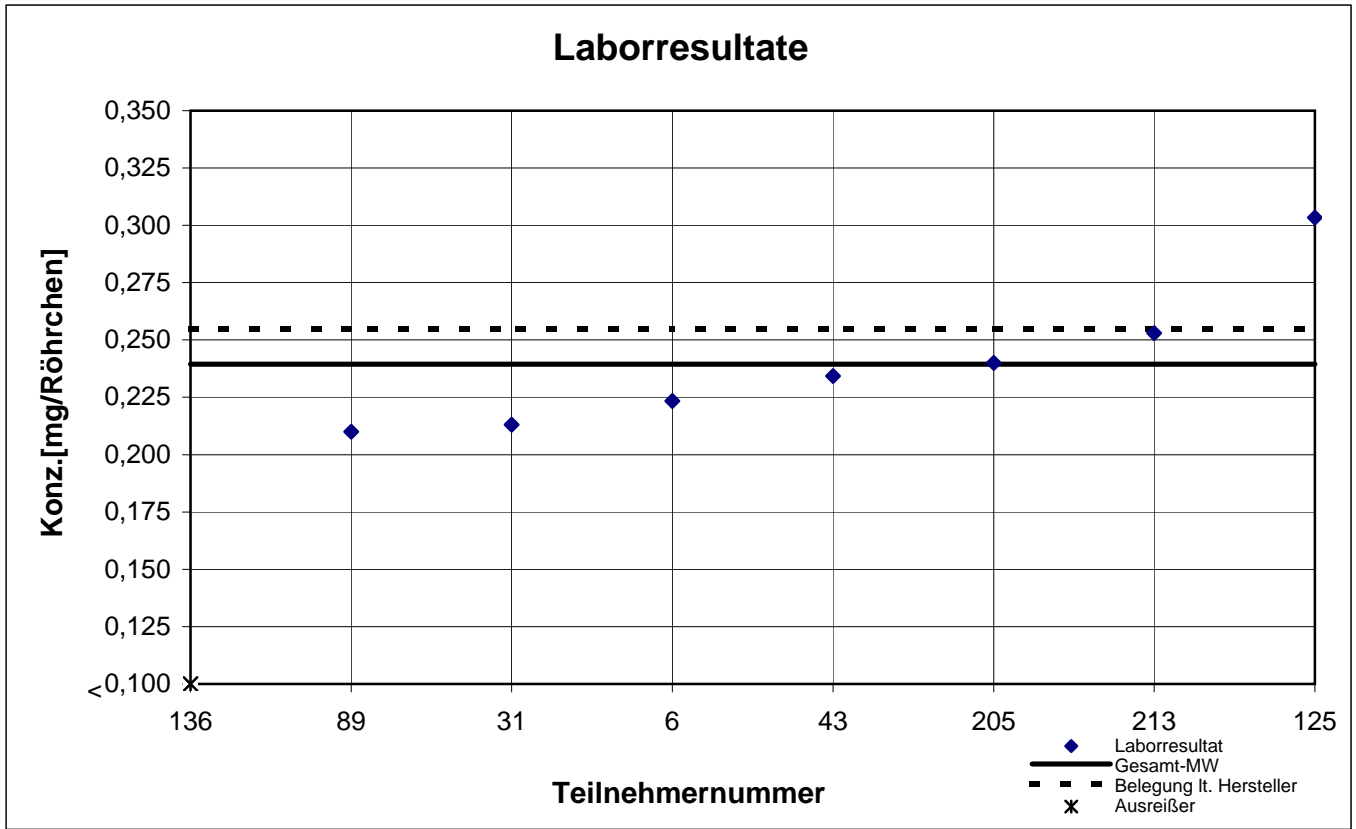
TYP B - Probe 1

Ethylbenzol



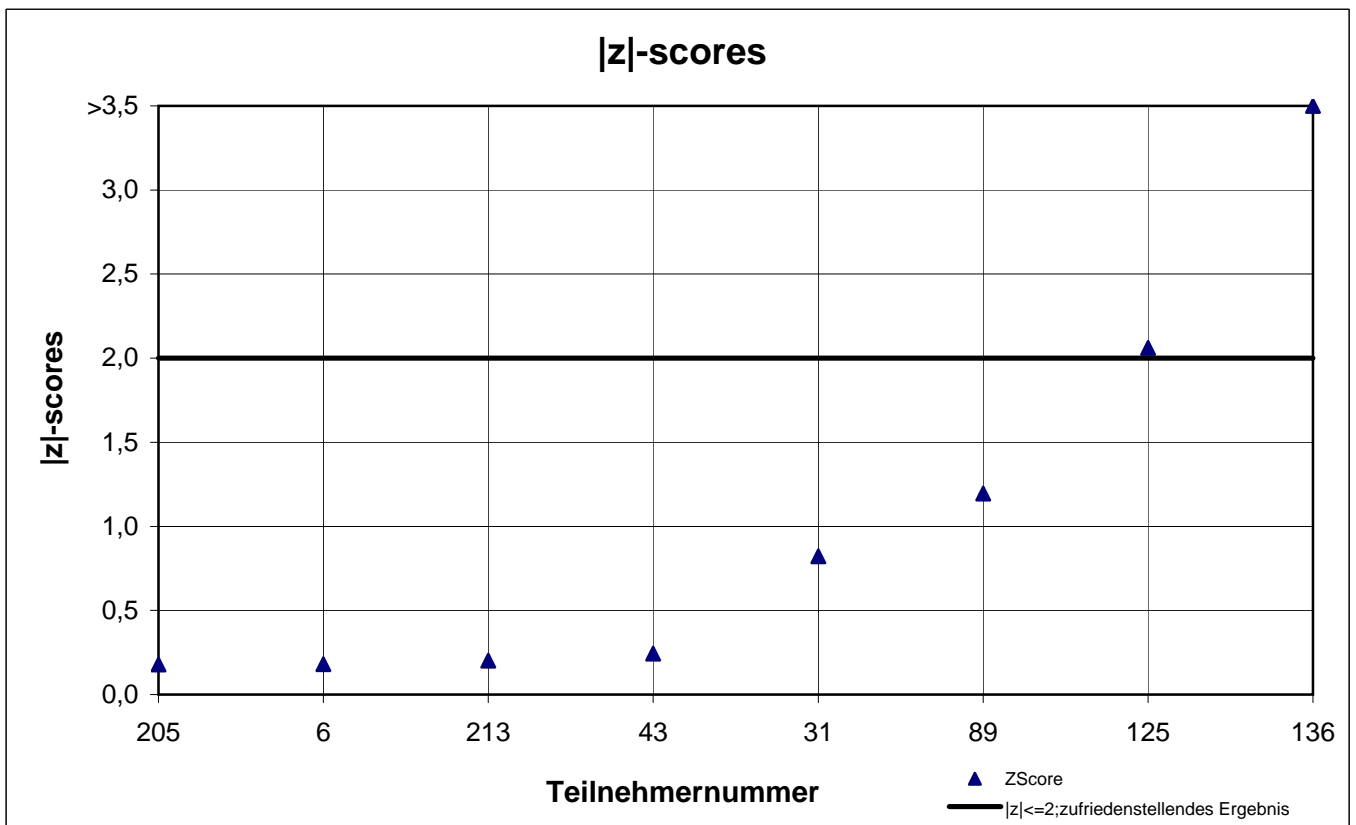
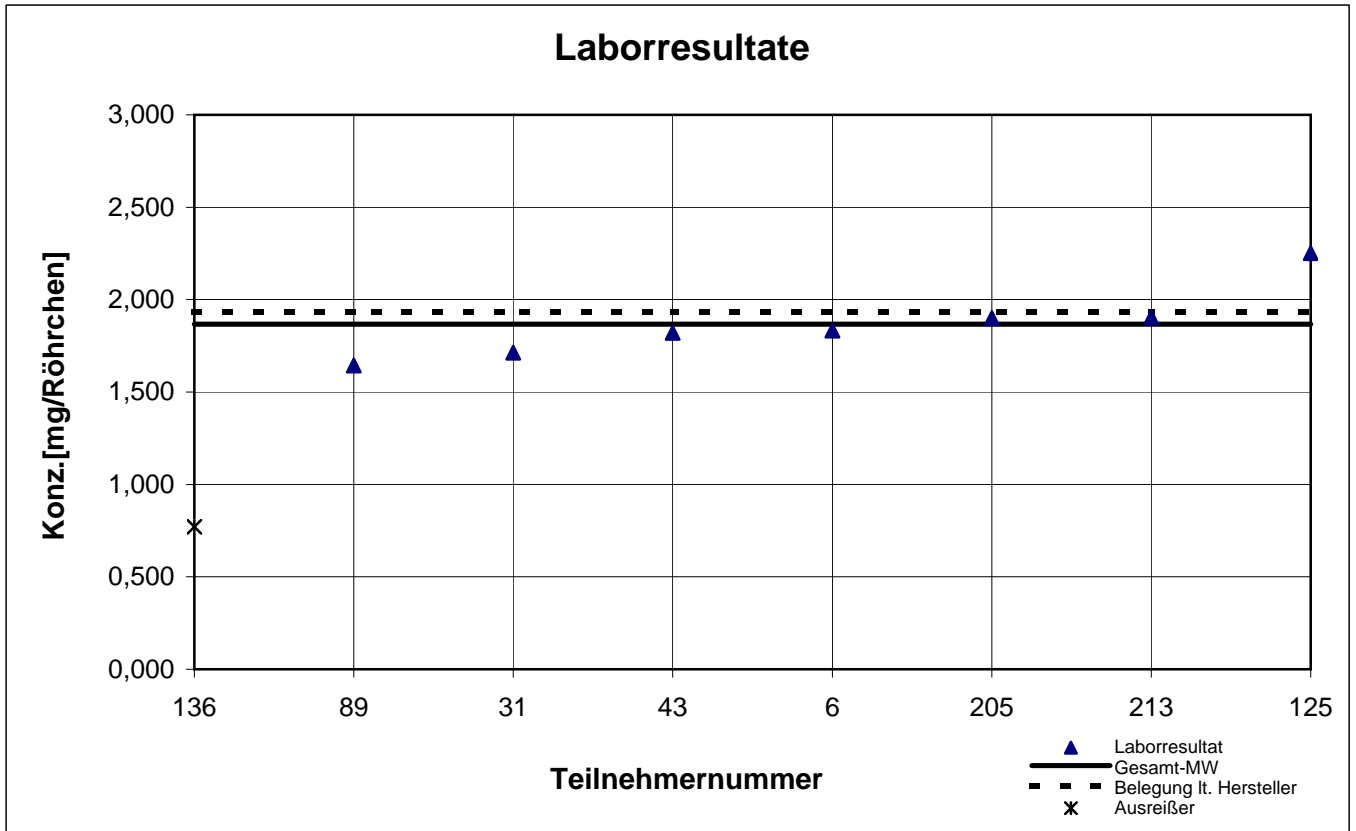
TYP B - Probe 1

o-Xylol



TYP B - Probe 1

Toluol



results TYB B - sample 2

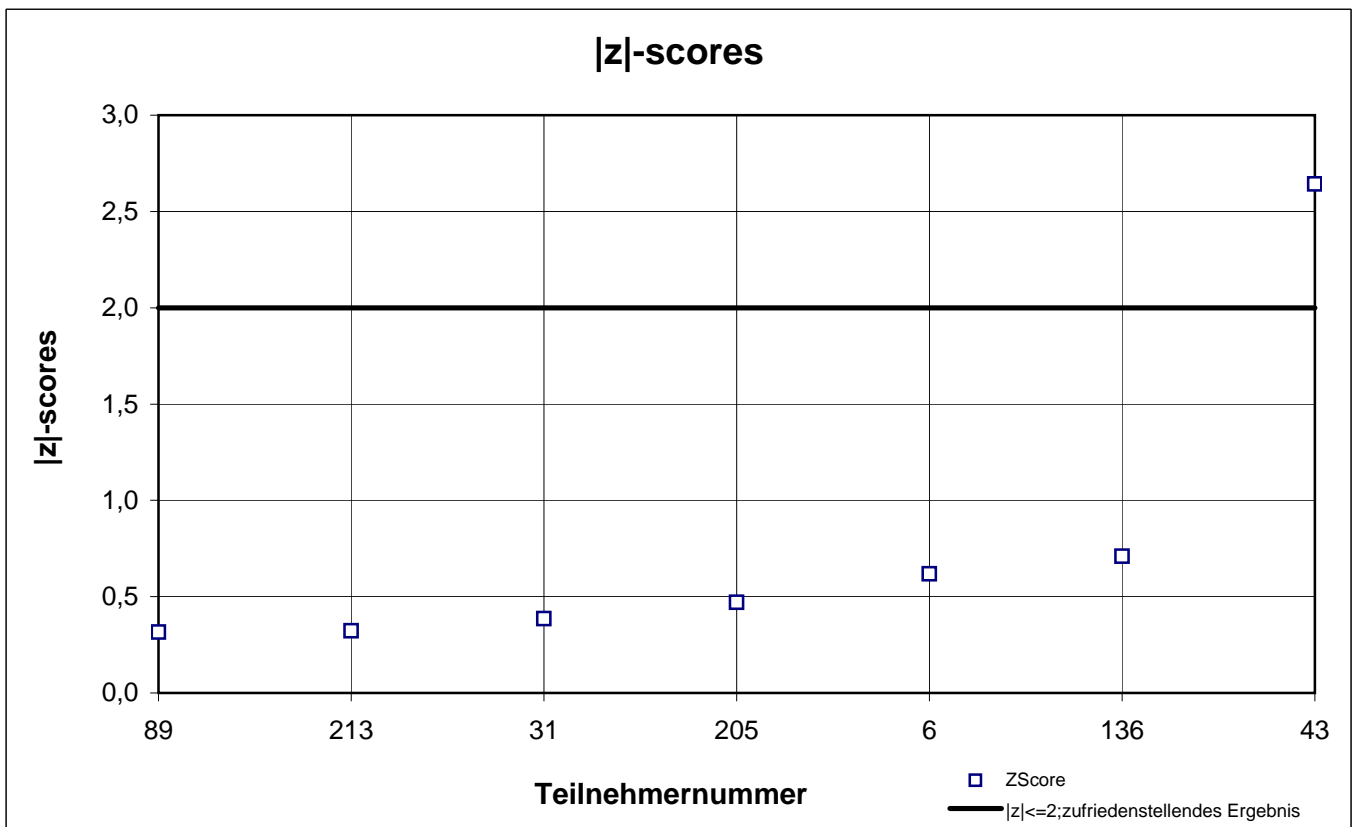
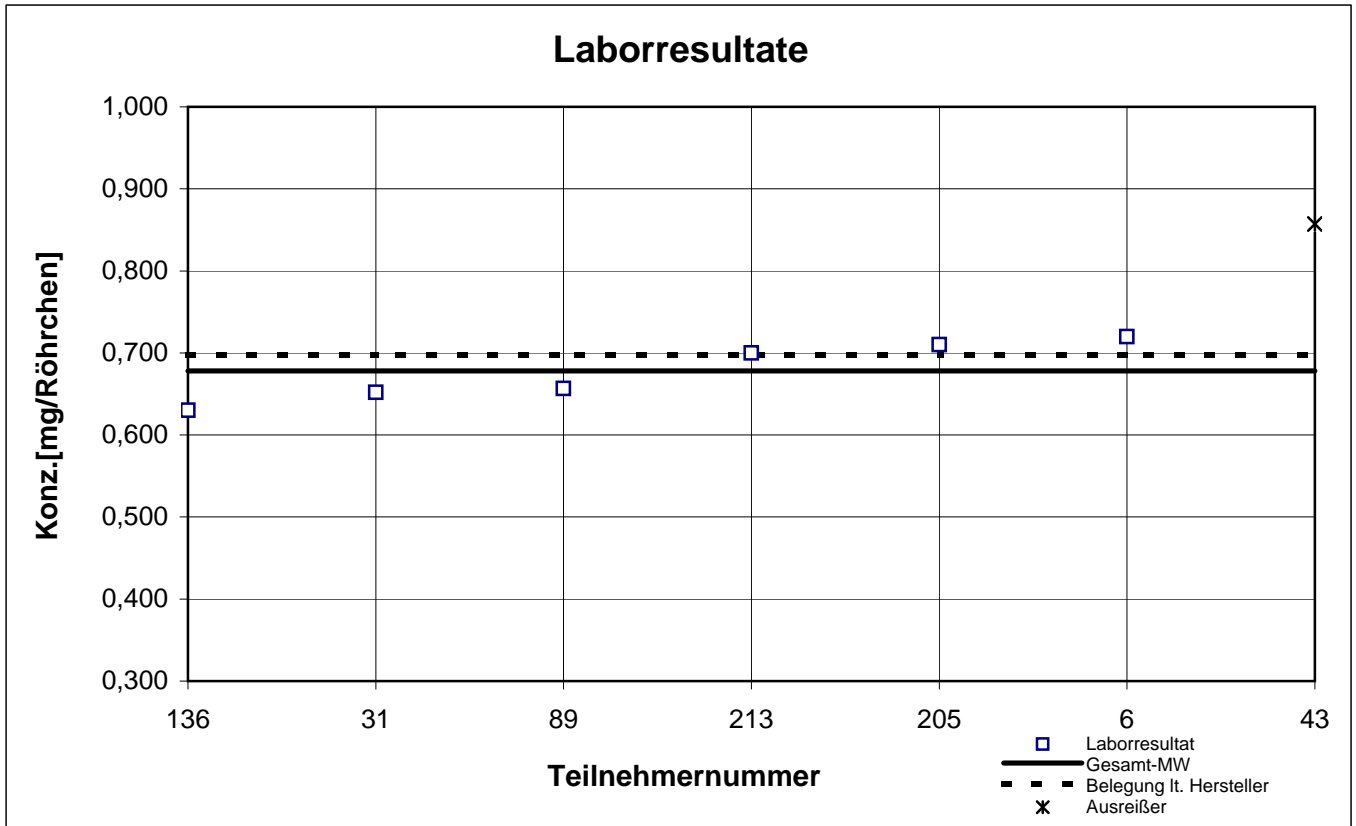
participant number	cyclohexane		ethyl acetate		n-octane		n-propyl acetate	
	result [mg/tube]	z - score	result [mg/tube]	z - score	result [mg/tube]	z - score	result [mg/tube]	z - score
6	0,720	0,6	1,092	0,2	0,880	0,3	1,397	0,0
9	k.A.	k.A.	k.A.	k.A.	k.A.	k.A.	k.A.	k.A.
31	0,652	0,4	1,069	0,4	0,891	0,2	1,397	0,0
43	0,857	2,6	1,063	0,4	0,917	0,1	1,358	0,3
89	0,657	0,3	0,987	1,1	0,887	0,2	1,340	0,5
125	k.A.	k.A.	k.A.	k.A.	k.A.	k.A.	k.A.	k.A.
136	0,630	0,7	1,260	1,3	0,071	9,2	k.A.	k.A.
205	0,710	0,5	1,200	0,8	0,950	0,5	1,500	0,7
213	0,700	0,3	1,107	0,0	0,924	0,2	1,431	0,2

 marked fields are outliers!

	cyclohexane	ethyl acetate	n-octane	n-propyl acetate
mean c_k [mg / tube]	0,678	1,111	0,908	1,404
standard deviation S_k [mg / tube]	0,0366	0,0912	0,0269	0,0570
relative standard deviation [%]	5,40	8,22	2,97	4,07
mean value of control samples [mg / tube]	0,698	1,118	0,961	1,452

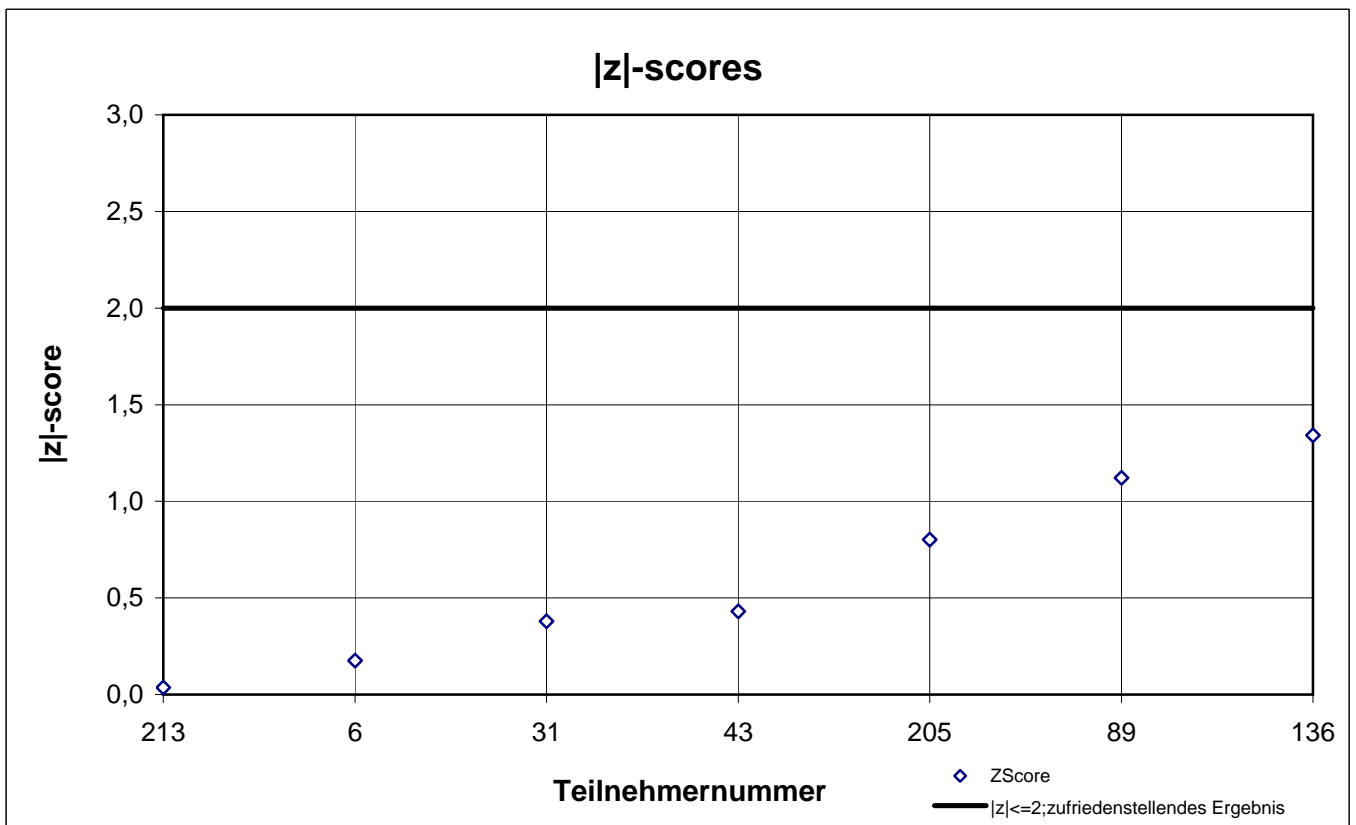
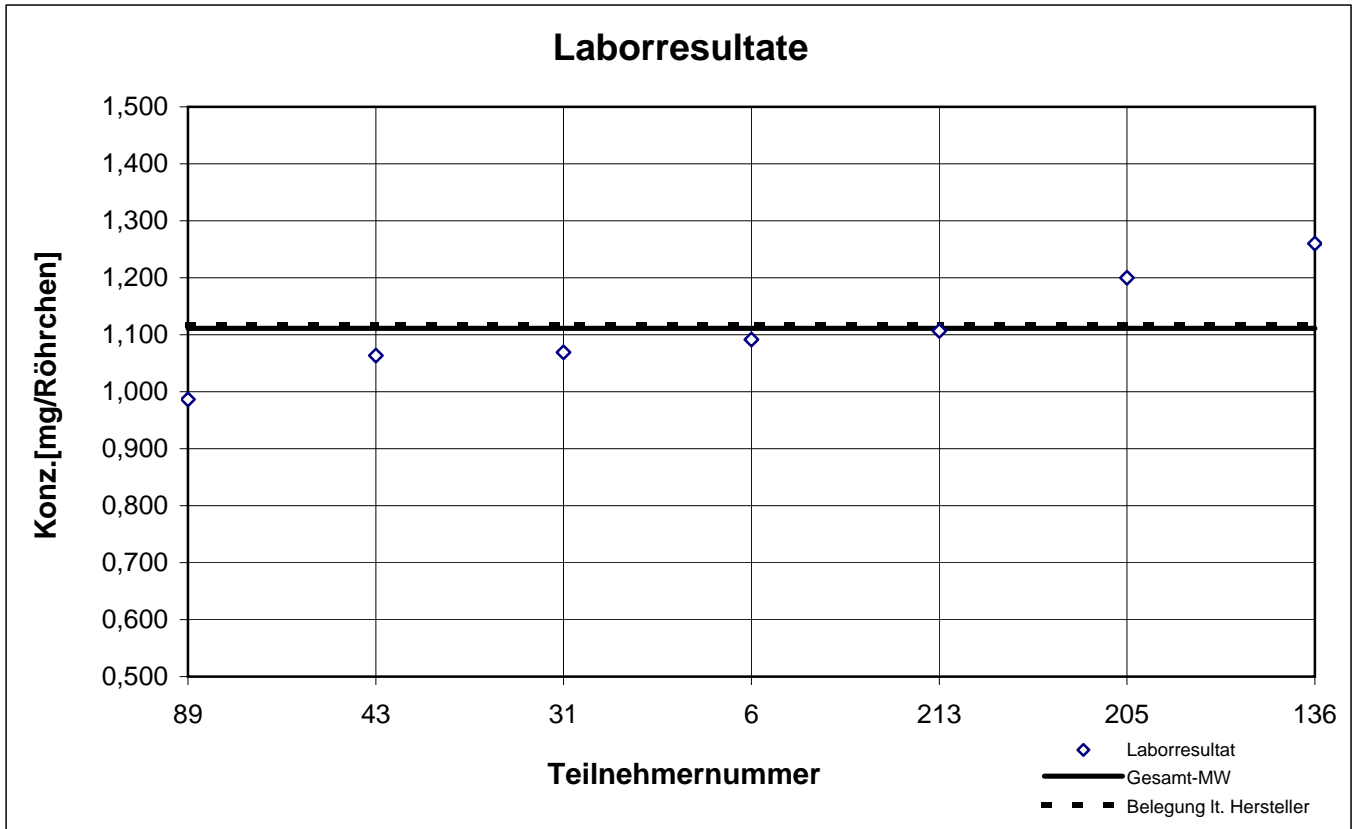
TYP B - Probe 2

Cyclohexan



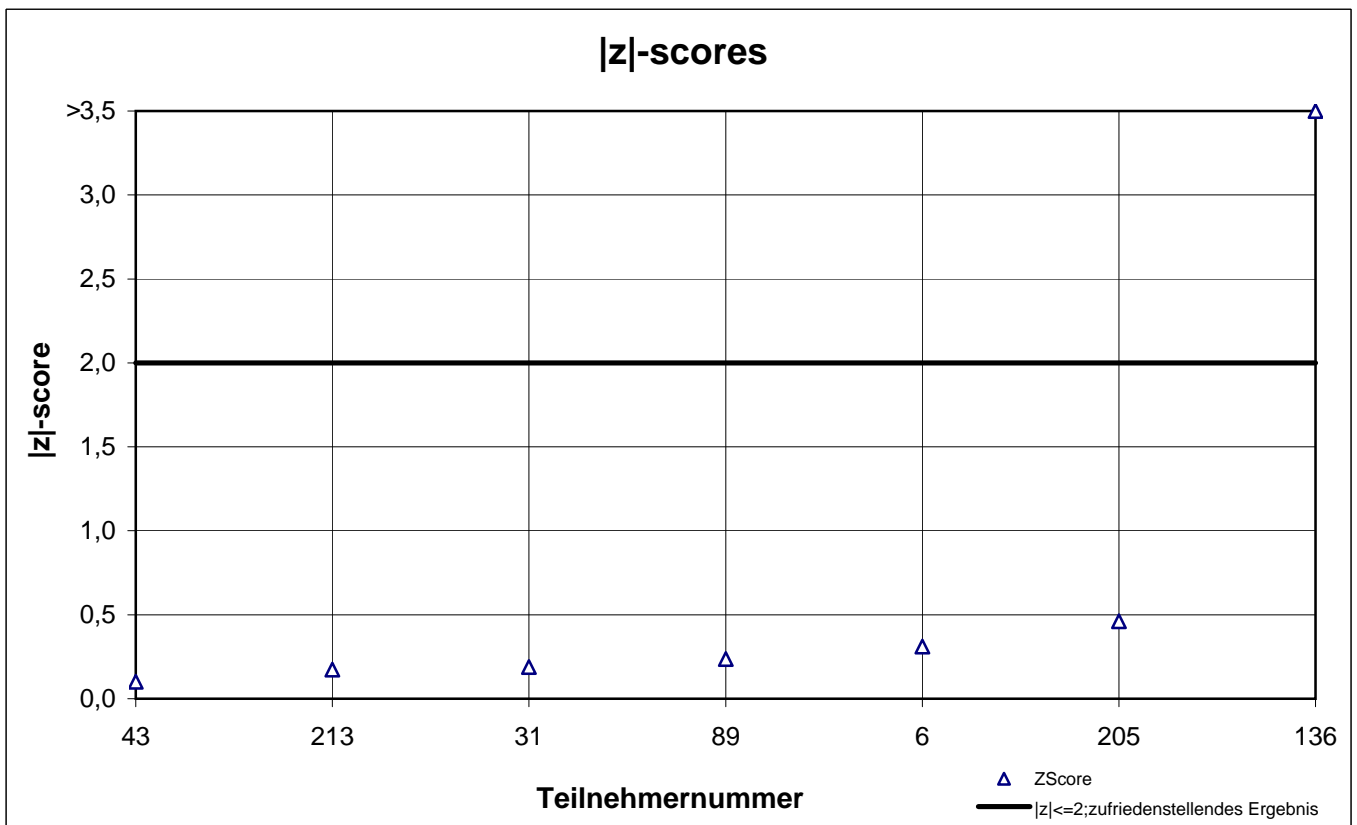
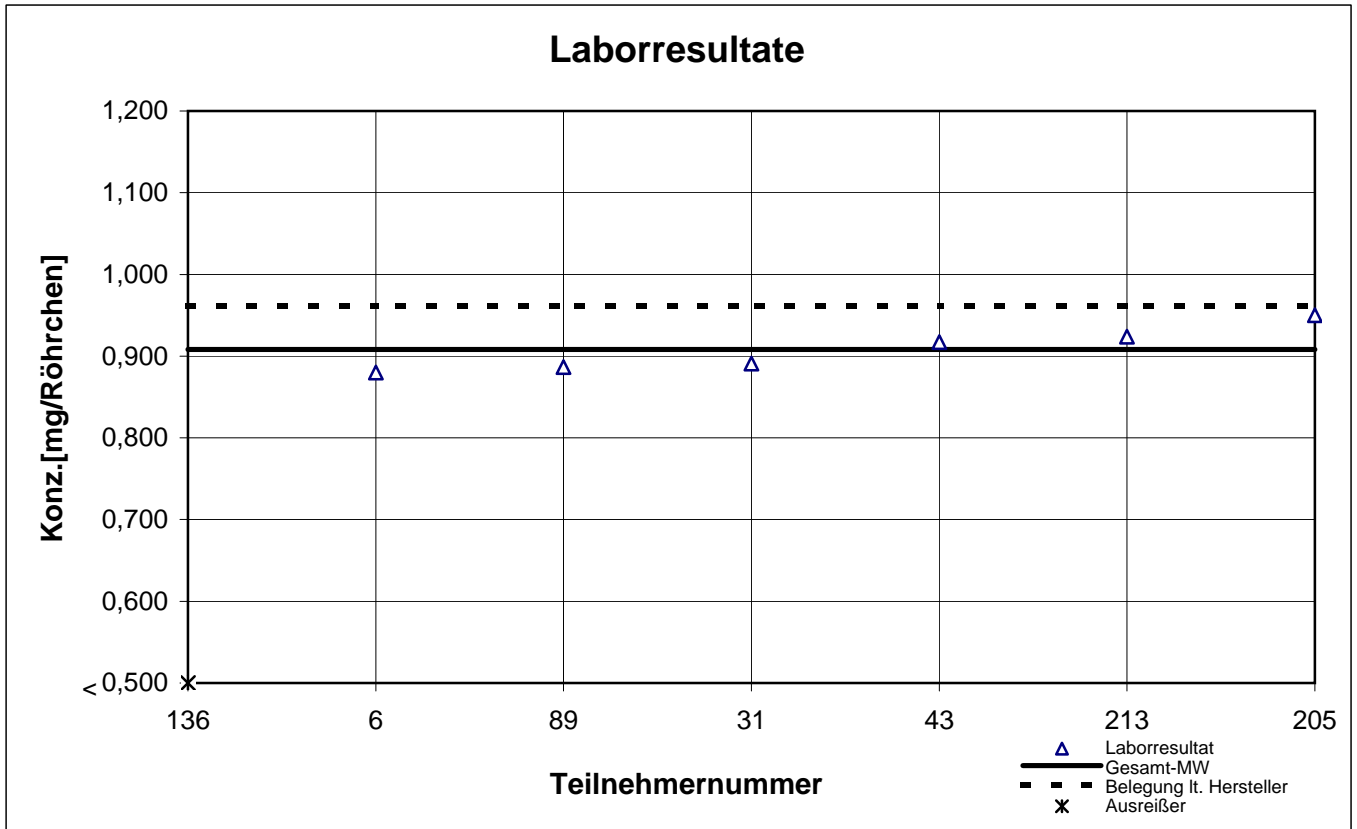
TYP B - Probe 2

Ethylacetat



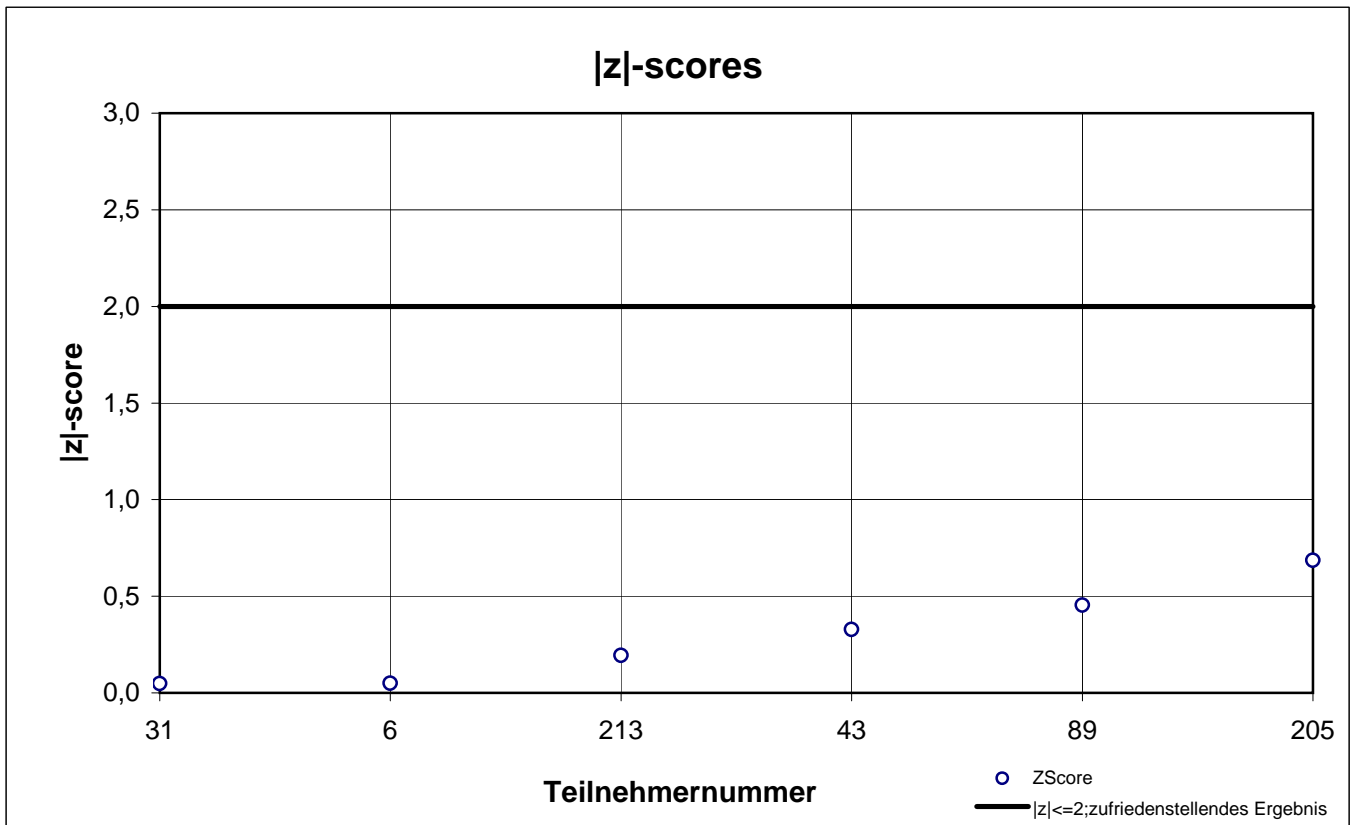
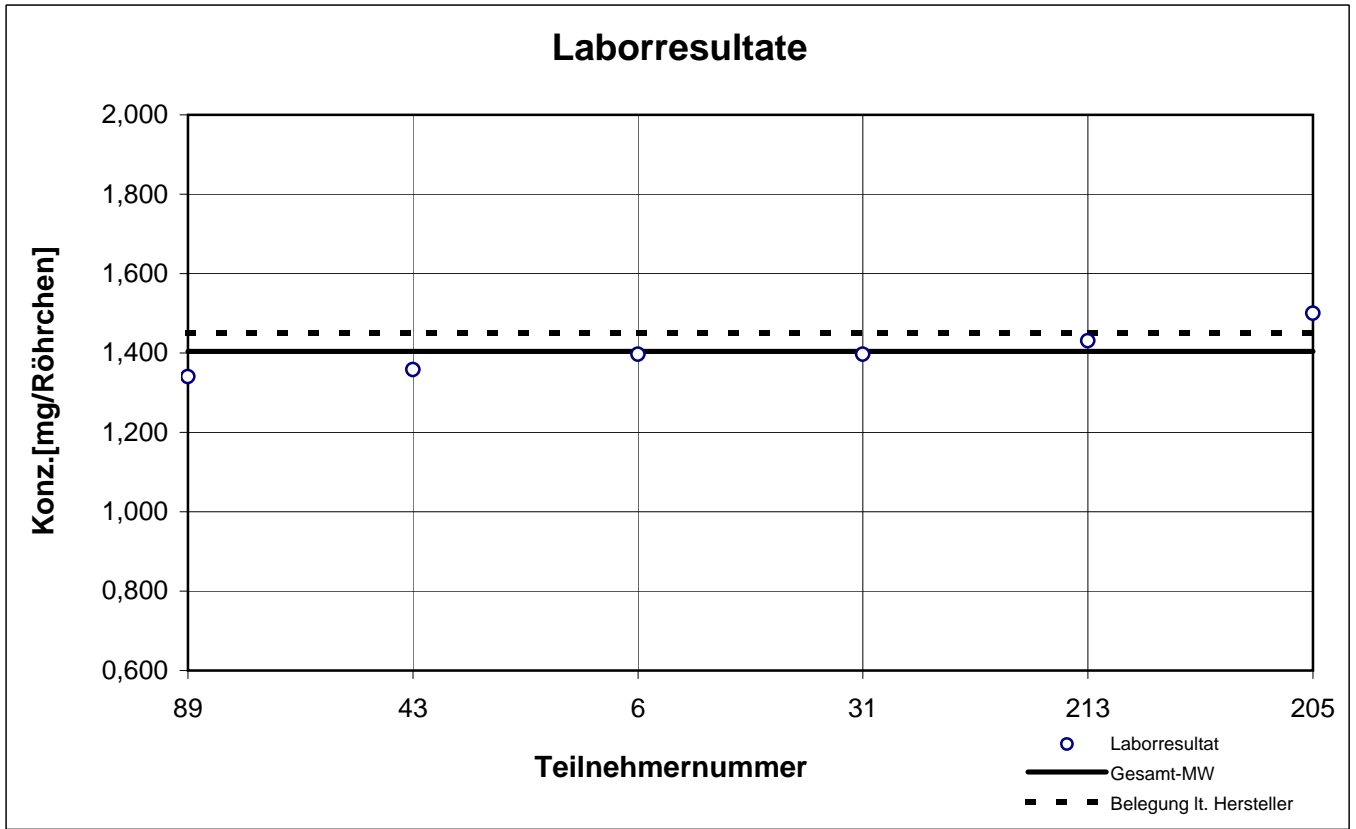
TYP B - Probe 2

n-Oktan



TYP B - Probe 2

n-Propylacetat



results TYP B - sample 3

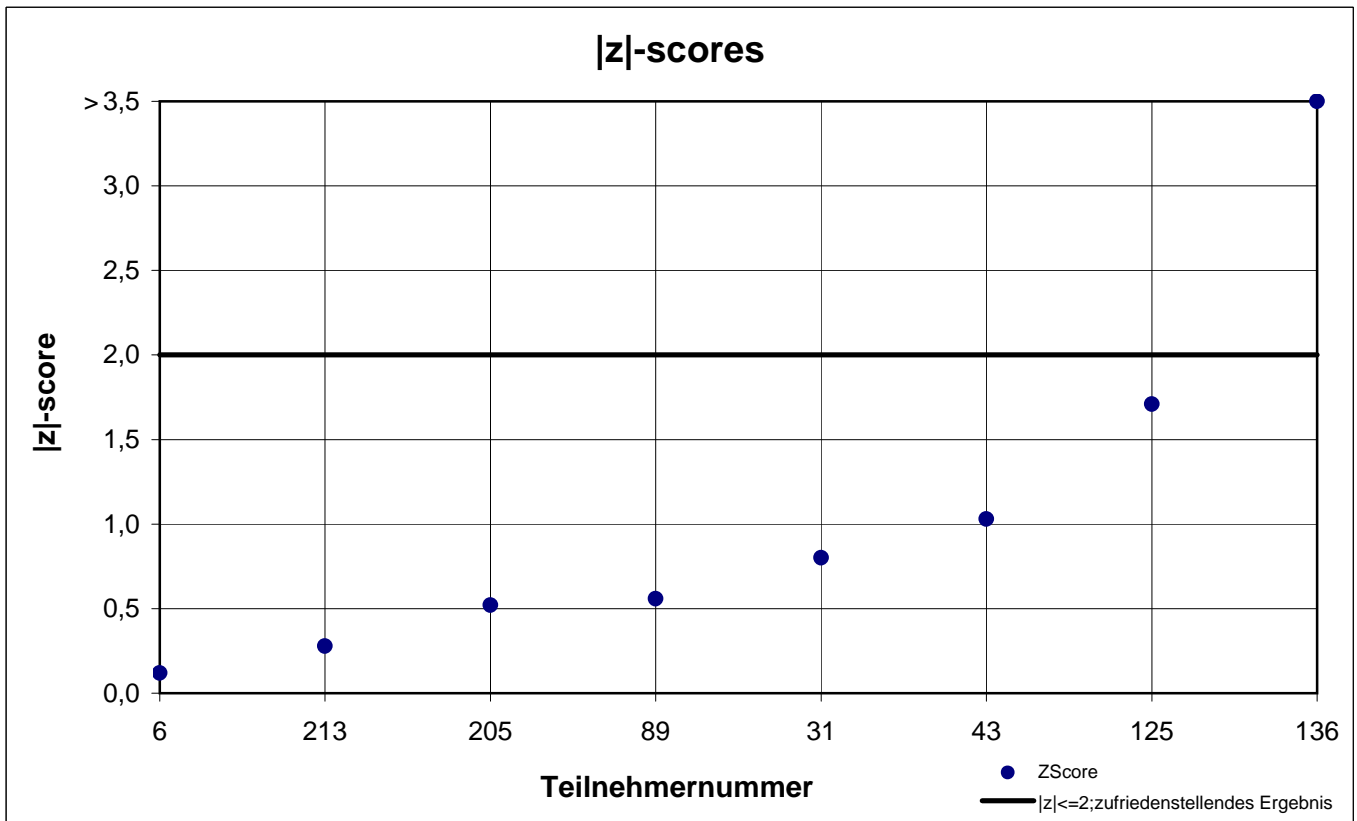
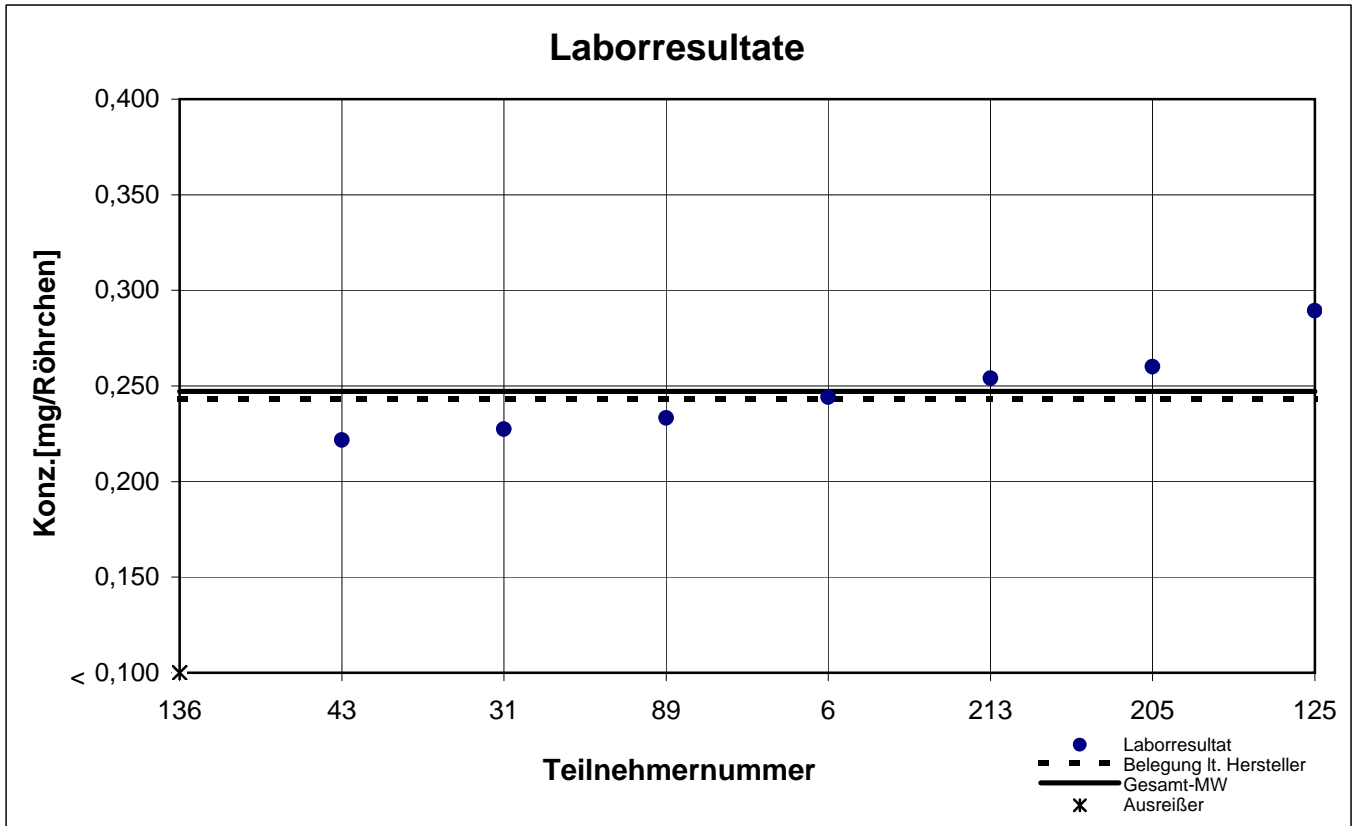
participant number	ethyl benzene		n-heptane		n-propyl acetate	
	result [mg/tube]	z - score	result [mg/tube]	z - score	result [mg/tube]	z - score
6	0,244	0,1	1,972	0,2	1,093	0,1
9	k.A.	k.A.	k.A.	k.A.	k.A.	k.A.
31	0,227	0,8	1,997	0,1	1,053	0,3
43	0,222	1,0	1,890	0,6	0,997	0,8
89	0,233	0,6	1,960	0,3	1,023	0,6
125	0,289	1,7	k.A.	k.A.	k.A.	k.A.
136	0,060	7,6	0,820	5,9	k.A.	k.A.
205	0,260	0,5	2,100	0,4	1,200	1,1
213	0,254	0,3	2,188	0,8	1,149	0,6

 marked fields are outliers!

	ethyl benzene	n-heptane	n-propyl acetate
mean c_k [mg / tube]	0,247	2,018	1,086
standard deviation S_k [mg / tube]	0,0232	0,1076	0,0774
relative standard deviation [%]	9,39	5,33	7,13
mean value of control samples [mg / tube]	0,243	2,037	1,117

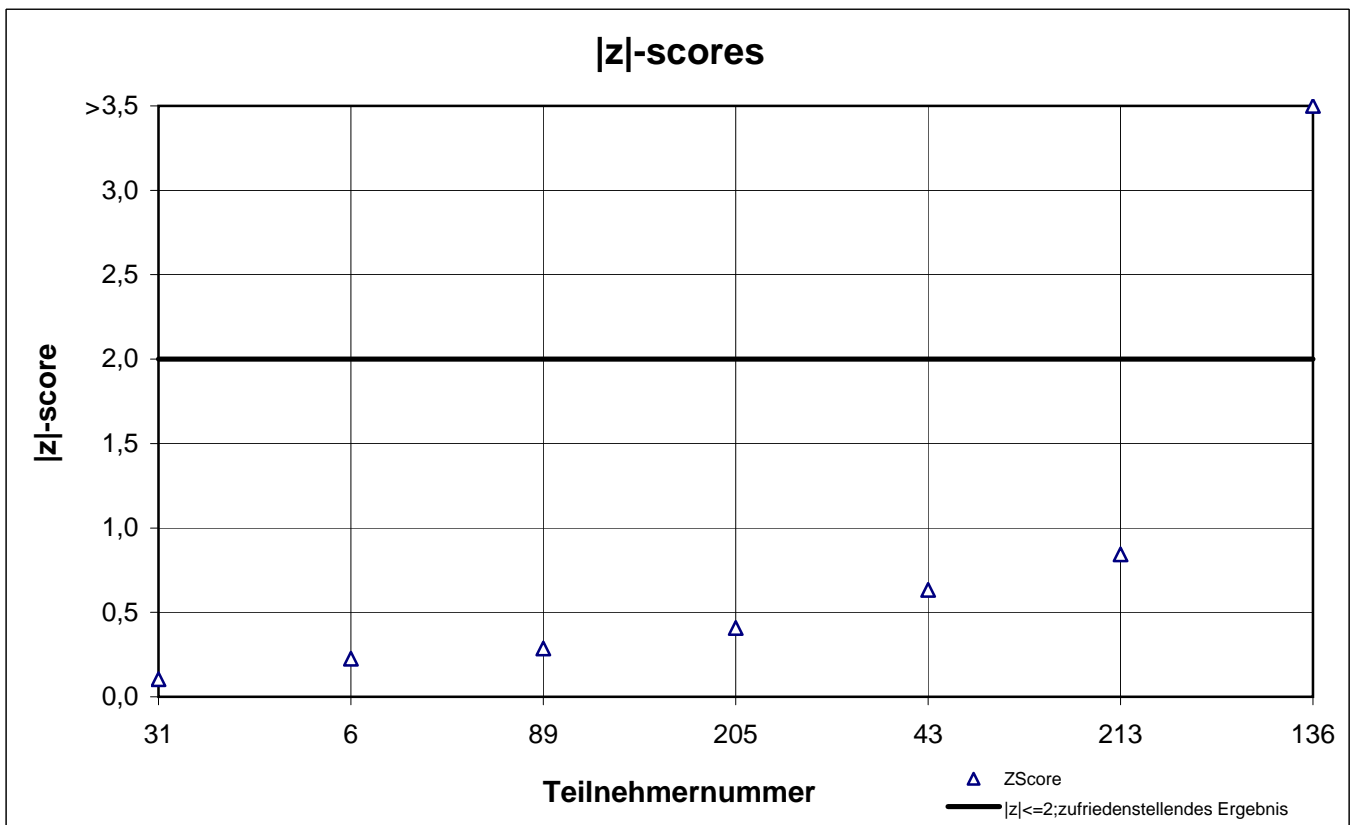
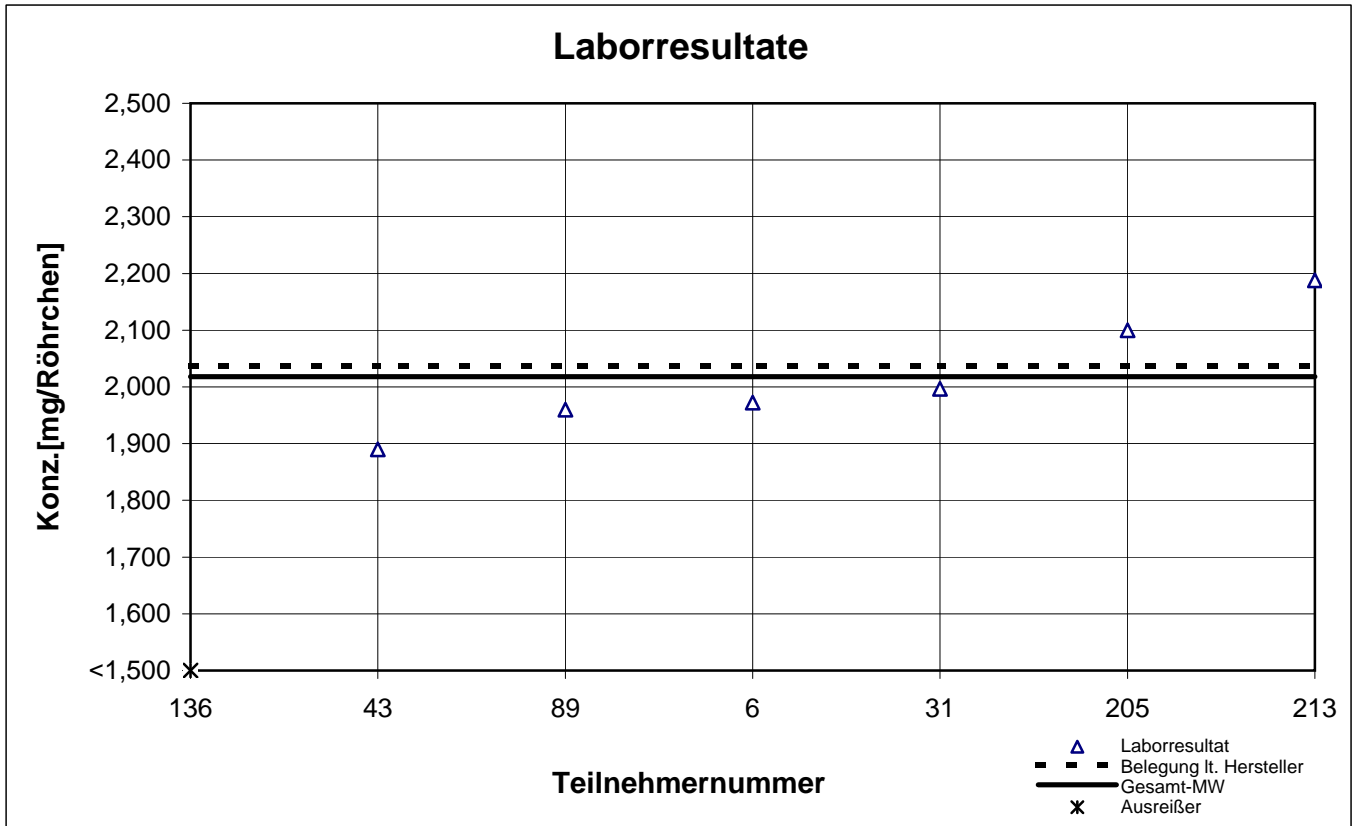
TYP B - Probe 3

Ethylbenzol



TYP B - Probe 3

n-Heptan



TYP B - Probe 3

n-Propylacetat

